



SHANGHAI OE INDUSTRIAL CO.,LTD.

EV PARTS

SEP 2023 V1.6

目录

CONTENTS

- ① Electric vacuum pump
- ② Electric power steering pump (EHPS)
- ③ Electric air brake compressor
- ④ Electric air condition compressor



目录

CONTENTS

- ⑤ Electric water pump
- ⑥ Controller for EHPS & Air Brake
- ⑦ Electric power steering rack
- ⑧ DCDC, OBC,PDU



01

Electric vacuum pump



Electric vacuum pump



OE-V001



Electric vacuum pump OE-V001

Rated voltage 13.5V

Current $\leq 15A$

Working temperature $-40\text{ }^{\circ}\text{C} \sim +120\text{ }^{\circ}\text{C}$

Vacuum degree Protection class IP56

Noise pressure level within 65dB (A)

Weight 1.7kg



Performance characteristics:

Oil-free lubrication, maintenance-free

Compact structure, flexible and convenient installation,
reliable performance

Low power consumption, high efficiency and long life

Anti-reverse protection

Over-current and over-temperature protection



Electric vacuum pump

OE-V002



Electric vacuum pump OE-V002

Rated voltage DC24V

Current $\leq 12A$

Working temperature $-40\text{ }^{\circ}\text{C} \sim +110\text{ }^{\circ}\text{C}$

Vacuum degree $\geq 88\%$

Protection grade IP65

Noise within 70dB (A)

Weight 1.9Kg



Product features:

- (1)Dual-cavity opposed (2)Diaphragm structure
- (3)Integrated check valve (4)High reliability
- (5)Independent, single vacuum source (6)Low noise
- (7)Long life

02

Electric power steering pump (EHPS)



Electric power steering pump (EHPS)



OE-P001



Performance parameters of permanent magnet synchronous motor

Rated Power	1.5 KW	Peak Power	3 KW
Rated Voltage	AC380V/220V	Back EMF (Rated Speed)	334V
Rated Current	3.5A	Peak current	7A
Rated torque	9.55 N.m	Peak torque	19.1 N.m
Rated Speed	1500r/min	Working speed	1500 r/min
Pressure	13Mpa	Flow	12L/min
Rated frequency	125Hz	Working frequency	125 Hz
Insulation class	H	Protection class	IP67
Rated efficiency	92%	Pole pairs	5



Electric power steering pump



OE-P002



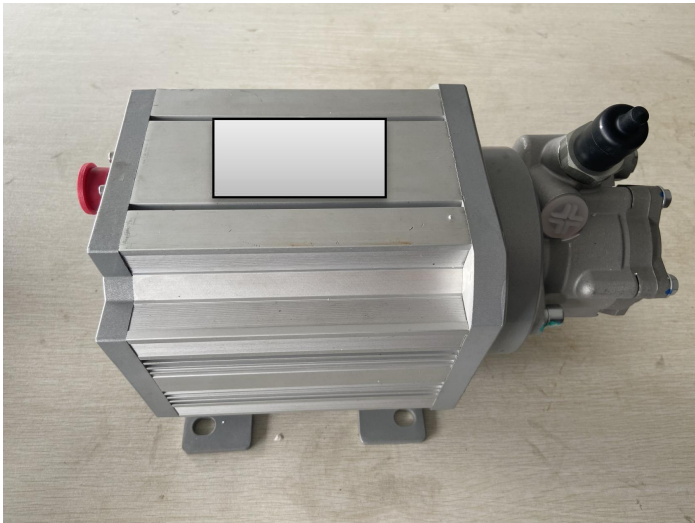
Performance parameters of permanent magnet synchronous motor			
Rated Power	2.2 KW	Peak Power	4.4 KW
Rated Voltage	AC380V/220V	Back EMF (Rated Speed)	323V
Rated Current	4.5A	Peak current	9A
Rated torque	14 N.m	Peak torque	28 N.m
Rated Speed	1500r/min	Working speed	1000 r/min
Pressure	13Mpa	Flow	2±1.5L/min
Max pressure	13 Mpa	Working frequency	84 Hz



Electric power steering pump



OE-P003



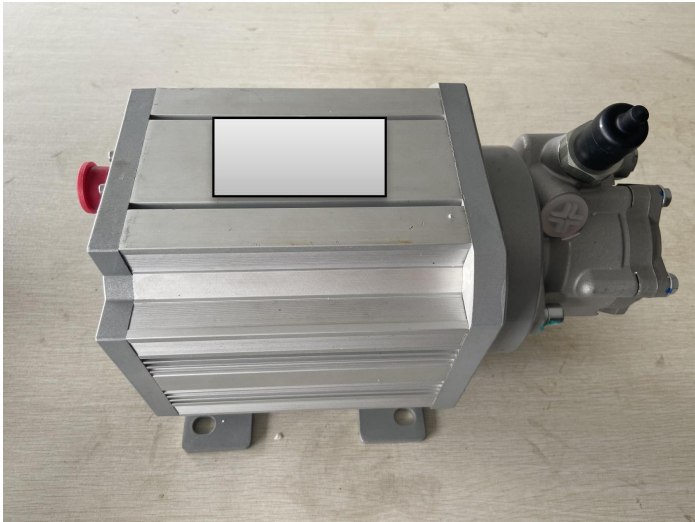
Performance parameters of permanent magnet synchronous motor			
Rated Power	3 KW	Peak Power	6 KW
Rated Voltage	AC380V/220V	Back EMF (Rated Speed)	217V
Rated Current	7.5A	Peak current	15A
Rated torque	19 N.m	Peak torque	38 N.m
Rated Speed	1500r/min	Working speed	1200 r/min
Pressure	15Mpa	Flow	17L/min± 1.5L/min
Displacement	14ml/r	Working frequency	80 Hz



Electric power steering pump



OE-P004



Performance parameters of permanent magnet synchronous motor			
Rated Power	4 KW	Peak Power	10.75 KW
Rated Voltage	AC380V/220V	Back EMF (Rated Speed)	275V
Rated Current	7.5A	Peak current	15A
Rated torque	19 N.m	Peak torque	38 N.m
Rated Speed	1500r/min	Working speed	1200 r/min
Pressure	17Mpa± 0.5	Flow	18L/min± 2L/min
Displacement	14ml/r	Working frequency	80 Hz



Electric power steering pump



OE-P005



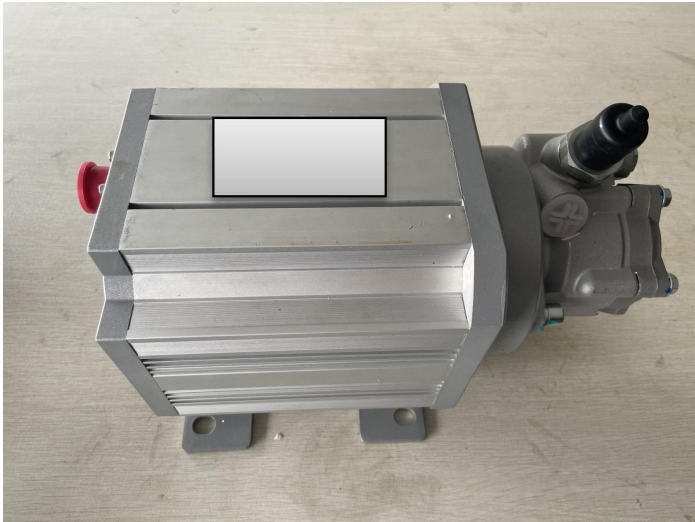
Performance parameters of permanent magnet synchronous motor			
Rated Power	3 KW	Peak Power	9 KW
Rated Voltage	AC247V		
Rated Current	10A	Peak current	22A
Rated torque	30 N.m	Peak torque	86 N.m
Rated Speed	1000r/min	Working speed	880-1000r/min
Pressure	17Mpa± 0.5	Flow	18L/min± 2L/min
Displacement	14ml/r	Working frequency	80 Hz



Electric power steering pump



OE-P006



Performance parameters of permanent magnet synchronous motor

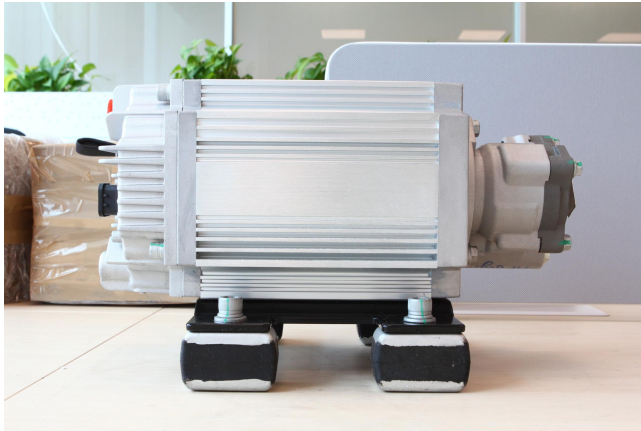
Rated Power	5.5 KW	Peak Power	11 KW
Rated Voltage	AC380V		
Rated Current	12A	Peak current	24A
Rated torque	35 N.m	Peak torque	70 N.m
Rated Speed	1500r/min	Working speed	1200r/min
Pressure	17Mpa± 0.5	Flow	28L/min



Electric power steering pump



OE-P010



DUAL POWER ELECTRIC POWER STEERING PUMP

Dual power electric steering pump assembly, powered by high-voltage power battery pack (DC540V) and low-voltage (DC24V) battery at the same time. In case of high-voltage sudden disconnection, the low-voltage power supply system works to achieve seamless switching and ensure that high-voltage suddenly occurs during driving. When disconnected, the electric power steering system for new energy vehicles works normally.

We have 2.2kw and 3kw Dual power electric steering pump





Electric power steering pump



OE-P011



Lowe voltage 12V&24V Three in one			
Rated Power	0.5 KW	Peak Power	1.5 KW
Rated Voltage	12VDC/24VDC	Pressure	12Mpa

03

Electric air brake compressor



Electric air brake compressor



OE-B001



oil-free piston type			
Rated exhaust	120L/min	Motor Power	1.5 KW
Rated exhaust pressure	1Mpa	Weight	26 Kg
Exhaust pressure	1.2Mpa	Operating temperature	-40℃ ~ +60℃
Dimensions	340x275x275 mm	Protection class	IP67

Oil-free two-stage electric air compressor

The air brake system for hybrid, pure electric commercial vehicles provides air. Suitable for buses, light trucks, logistics and other vehicles below 6 meters



Electric air brake compressor



OE-B002



oil-free piston type			
Rated exhaust	240L/min	Motor Power	3KW
Rated exhaust pressure	1Mpa	Weight	48Kg
Exhaust pressure	1.2Mpa	Operating temperature	-40℃ ~ +60℃
Dimensions	500x285x320 mm	Protection class	IP67

Oil-free two-stage electric air compressor

The air brake system for hybrid, pure electric commercial vehicles provides air. Suitable for buses, light trucks, logistics and other vehicles below 9 meters



Electric air brake compressor



OE-B003



oil-free piston type			
Rated exhaust	380L/min	Motor Power	4KW
Rated exhaust pressure	1Mpa	Weight	65Kg
Exhaust pressure	1.2Mpa	Operating temperature	-40℃ ~ +60℃
Dimensions	560x335x370 mm	Protection class	IP67

Oil-free two-stage electric air compressor
The air brake system for hybrid, pure electric commercial vehicles provides air. Suitable for buses, light trucks, logistics and other vehicles above 9 meters



Electric air brake compressor



OE-B004



oil-free piston type			
Rated exhaust	160L/min	Motor Power	1.6 KW
Rated exhaust pressure	1Mpa	Weight	65Kg
Exhaust pressure	1.2Mpa	Operating temperature	-40℃ ~ +60℃
Dimensions	560x335x370 mm	Protection class	IP67

Oil-free two-stage electric air compressor

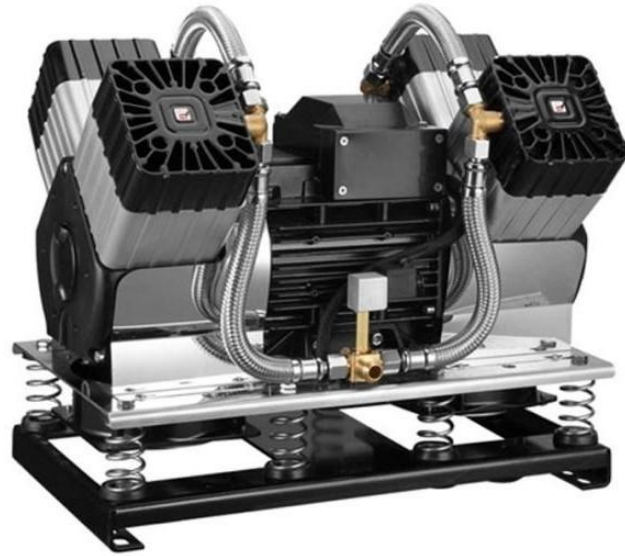
The air brake system for hybrid, pure electric commercial vehicles provides air. Suitable for buses, light trucks, logistics and other vehicles less than 6 meters



Electric air brake compressor



OE-B005



oil-free piston type			
Rated exhaust	200L/min	Motor Power	2.2 KW
Rated exhaust pressure	1Mpa	Weight	45Kg
Exhaust pressure	1.2Mpa	Operating temperature	-40℃~ +60℃
Dimensions	495x385x355 mm	Protection class	IP67

Oil-free two-stage electric air compressor

The air brake system for hybrid, pure electric commercial vehicles provides air. Suitable for buses, light trucks, logistics and other vehicles 6-9 meters



Electric air brake compressor



OE-B006



oil-free piston type			
Rated exhaust	240L/min	Motor Power	3.0 KW
Rated exhaust pressure	1Mpa	Weight	45Kg
Exhaust pressure	1.2Mpa	Operating temperature	-40℃ ~ +60℃
Dimensions	495x385x355 mm	Protection class	IP67

Oil-free two-stage electric air compressor

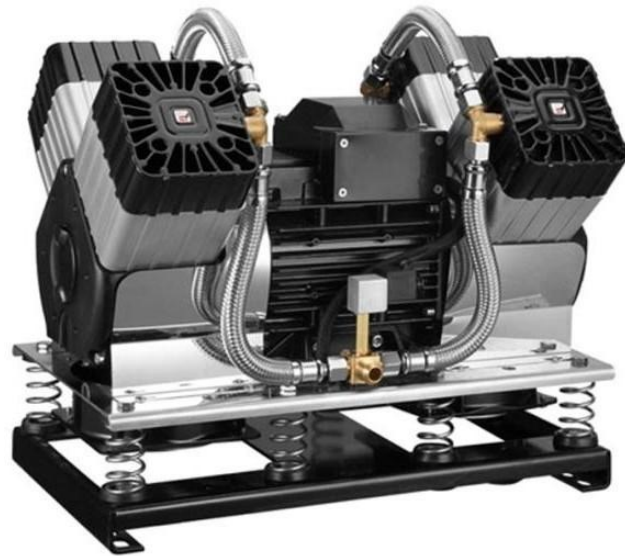
The air brake system for hybrid, pure electric commercial vehicles provides air. Suitable for buses, light trucks, logistics and other vehicles 6-9 meters



Electric air brake compressor



OE-B007



oil-free piston type			
Rated exhaust	300L/min	Motor Power	3.0 KW
Rated exhaust pressure	1Mpa	Weight	45Kg
Exhaust pressure	1.2Mpa	Operating temperature	-40℃ ~ +60℃
Dimensions	495x385x355 mm	Protection class	IP67

Oil-free two-stage electric air compressor

The air brake system for hybrid, pure electric commercial vehicles provides air. Suitable for buses, light trucks, logistics and other vehicles 6-9 meters



Electric air brake compressor



OE-B008



Applicable models:
Engineering vehicles: 4*2, 6*4,
8*4, 10*8, etc.,
Including sanitation trucks,
tractors, muck trucks,
dump trucks, mining trucks
Bus: more than 6 meters

NO.	Item	Parameter	
1	Model	EAC-25-22	EAC-38-22
2	Displacement	250L/min	380L/min
3	Power	3KW	4KW
4	Noise	72db	72db
5	Exhaust pressure	1MPa	1MPa
6	Exhaust gas temperature	150℃	150℃
7	size	580*352*362	600*355*368
8	ambient temperature	-40℃ -+60℃	-40℃ -+60℃
9	weight	48KG	52KG
10	Air tank volume	90 L to 140 L	120 L to 240 L
11	Starting air pressure time (0-0.65MPa)	within 3 minutes (140L air storage tank)	within 3 minutes (200L air storage tank)
12	Inflated full time (0-1MPa)	within 5 minutes (140L air storage tank)	within 5 minutes (200L air storage tank)
13	degree of protection	IP68	IP68
14	Vibration resistance	3G	3G



Electric air brake compressor



OE-B009



Applicable models:
Engineering vehicles: 4*2, 6*4, etc.,
including light trucks,
Sanitation vehicles, logistics vehicles, etc.
Bus: 6 meters

NO.	Item	Parameter	
1	Model	EAC-12-63	EAC-16-63
2	Displacement	120L/min	160L/min
3	Power	1.5KW	1.8KW
4	Noise	72db	72db
5	Exhaust pressure	1MPa	1MPa
6	Exhaust gas temperature	150℃	150℃
7	size	343*274*274	363*274*281
8	ambient temperature	-40℃ -+60℃	-40℃ -+60℃
9	weight	25KG	25.5KG
10	Air tank volume	30L to 70L	40L to 90L
11	starting pressure time (0-0.65MPa)	within 3 minutes (70L air tank)	within 3 minutes (90L air tank)
12	Inflated full time (0-1MPa)	within 5 minutes (70L air tank)	within 5 minutes (90L air tank)
13	degree of protection	IP68	IP68
14	Vibration resistance	3G	3G



Electric air brake compressor



OE-B010



Applicable models:
Engineering vehicles: 6*4, 8*4, 10*8, etc.,
Including tractors, muck trucks, etc.
Bus: more than 6 meters

NO.	Item	Parameter	
1	Model	EAC-25-63 (Q)	EAC-40-63 (Q)
2	Displacement	250L/min	400L/min
3	Power	3KW	4KW
4	Noise	72db	72db
5	Exhaust pressure	1MPa	1MPa
6	Exhaust gas temperature	150℃	≤150℃
7	size	435*314*353	446*314*353
8	ambient temperature	-40℃ -+60℃	-40℃ -+60℃
9	weight	37.8KG	42.2KG
10	Air tank volume	90 L to 140 L	120 L to 240 L
11	Starting air pressure time (0-0.65MPa)	within 3 minutes (140L air storage tank)	within 3 minutes (200L air storage tank)
12	Inflated full time (0-1MPa)	within 5 minutes (140L air storage tank)	within 5 minutes (200L air storage tank)
13	degree of protection	IP68	IP68
14	Vibration resistance	3G	3G



Electric air brake compressor



OE-B011



Applicable models (water-cooled Model):
Engineering vehicles: 6*4, 8*4, 10*8, etc.,
Including tractors, muck trucks, etc.
Bus: more than 6 meters

NO.	Item	Parameter
1	Model	EAC-40-63
2	Displacement	400L/min
3	Power	4KW
4	Noise	72db
5	Exhaust pressure	1.25MPa
6	Exhaust gas temperature	≤150℃
7	size	443*304*337
8	ambient temperature	-40℃ -+60℃
9	weight	42.2KG
11	Air tank volume	120 L to 240 L
12	Starting air pressure time (0-0.65MPa)	within 3 minutes (200L air storage tank)
13	Inflated full time (0-1MPa)	within 5 minutes (200L air storage tank)
14	degree of protection	IP68
15	Vibration resistance	3G

04

Electric air condition compressor



Electric air condition compressor



D series product specification (1)



Model	DM18A
Displacement	18 cc / rev
Speed range	2000-7200 RPM
Voltage	DC 10 v--- DC 430 v



Electric air condition compressor



D series product specification (2)



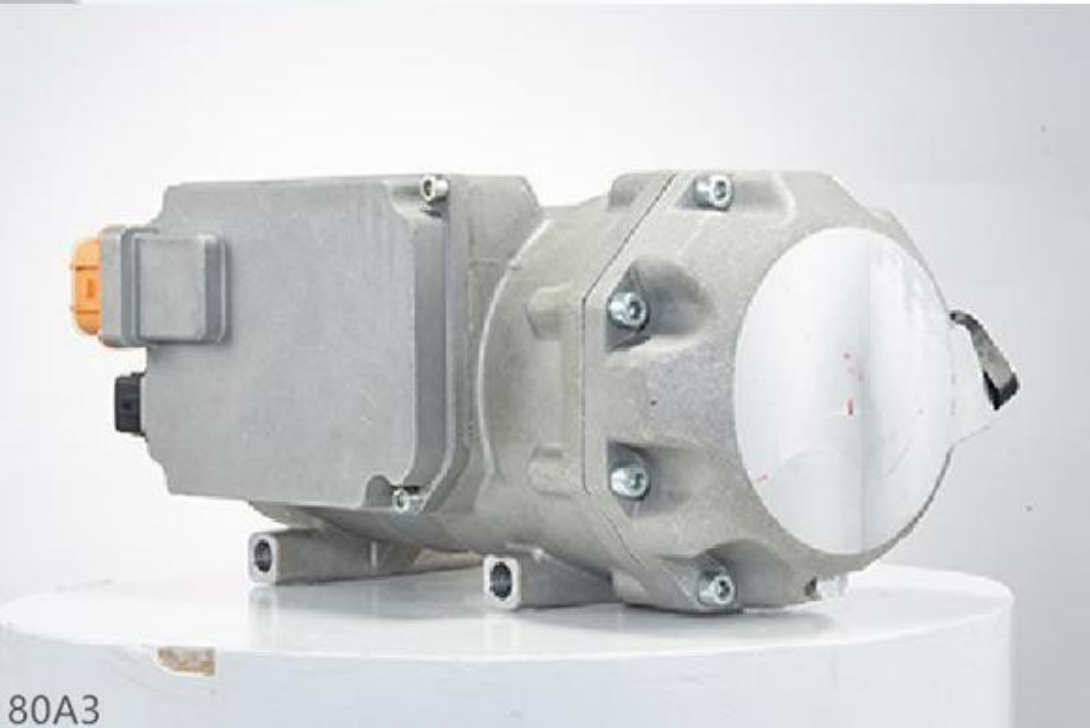
Model	DM24A
Displacement	24 cc / rev
Speed range	2000-6000 RPM
Voltage	DC 20 v--- DC 31 v



Electric air condition compressor



B series product specification (4)



Model	BM80C3
Displacement	80 cc / rev
Speed range	1000-6000 RPM
Voltage	DC 300 v--- DC 720 v



Electric air condition compressor



Series/Model		Refrigerating capacity (KW) / (K Btu/hr)			Input power (KW)			Coefficient of performance (COP)		
		3,000 RPM	4,000 RPM	6,000 RPM	3,000 RPM	4,000 RPM	6,000 RPM	3,000 RPM	4,000 RPM	6,000 RPM
D series	DM18A1	1.38 / 4.7	1.89 / 6.4	2.90 / 9.9	0.72	0.98	1.5	1.9	1.95	1.95
	DM18A2	1.38 / 4.7	1.89 / 6.4	2.90 / 9.9	0.74	0.99	1.56	1.85	1.9	1.85
	DM18A4	1.38 / 4.7	1.89 / 6.4	2.90 / 9.9	0.74	0.99	1.56	1.85	1.9	1.85
	DM18A5	1.38 / 4.7	1.89 / 6.4	2.90 / 9.9	0.72	0.98	1.5	1.9	1.95	1.95
	DM18A6	1.38 / 4.7	1.89 / 6.4	2.90 / 9.9	0.74	0.99	1.56	1.85	1.9	1.85
	DM18A7	1.38 / 4.7	1.89 / 6.4	2.15 / 7.3*	0.76	1.02	1.15*	1.8	1.85	1.85*
	DM18A8	1.38 / 4.7	1.89 / 6.4	2.90 / 9.9	0.74	0.99	1.56	1.85	1.9	1.85
	DM24A6	1.89 / 6.4	2.58 / 8.8	4.00 / 13.6	1.02	1.36	2.16	1.85	1.9	1.85
	DM27A1	2.15 / 7.3	2.90 / 9.9	4.60 / 15.7	1.1	1.49	2.3	1.95	1.95	2
	DM27A2	2.15 / 7.3	2.90 / 9.9	4.60 / 15.7	1.1	1.45	2.36	1.95	2	1.95
	DM27A3	2.15 / 7.3	2.90 / 9.9	4.60 / 15.7	1.1	1.49	2.3	1.95	1.95	2
	DM27A4	2.15 / 7.3	2.90 / 9.9	4.60 / 15.7	1.1	1.45	2.36	1.95	2	1.95
	DM27A5	2.15 / 7.3	2.90 / 9.9	4.60 / 15.7	1.1	1.49	2.3	1.95	1.95	2
	DM34A1	2.75 / 9.4	3.78 / 12.9	5.8 / 19.8	1.45	1.93	3	1.9	1.95	1.95
	DM34A3	2.75 / 9.4	3.78 / 12.9	5.8 / 19.8	1.45	1.93	3	1.9	1.95	1.95
	ES14C	1.05/ 3.6	1.44 / 4.9	2.20 / 7.5	0.55	0.69	1.14	1.9	1.95	1.95
	ES18C	1.38 / 4.7	1.89 / 6.4	2.90 / 9.9	0.72	0.98	1.5	1.9	1.95	1.95
	ES27C	2.15 / 7.3	2.90 / 9.9	4.60 / 15.7	1.1	1.49	2.3	1.95	1.95	2
B series	BM80A3	9.4 / 32.1	12.6 / 43.0	19.2 / 65.5	3.1	4.1	6.2	3.05	3.05	3.1

05

Electric water pump



Electric water pump



OE-W002



Features: small size, light weight, compact structure, wide range of applicable environments, platform development and design. Under the same shape, different speed, power and lift requirements of different vehicles can be met by PWM speed regulation. The pump has functions such as constant power, over-voltage protection, stall protection, dry running protection, reverse connection protection, and soft start.

Product Name	02.03.15X.XXXX (OE-W002)	
Rated Power	DC12V	DC 24V
Voltage range	DC9-16V	DC18-28V
Water inlet and outlet diameter	Φ20mm out diameter)	
Service life	20000 hours	
Use ambient temperature	-40℃-100℃	
Storage temperature	-40℃-100℃	
Protection class	IP67	
Circulating medium	antifreeze	
noise	≤50db	
Weight	0.9KG(include bracket)	



Electric water pump



OE-W003



Features: small size, light weight, compact structure, wide range of applicable environments, platform development and design. Under the same shape, different speed, power and lift requirements of different vehicles can be met by PWM speed regulation. The pump has functions such as constant power, over- voltage protection, stall protection, dry running protection, reverse connection protection, and soft start.

Product Name	02.03.2X.XXXX (OE-W003)				
Rated Power	DC12V		DC 24V		
Voltage range	DC9-16V		DC18-28V		
Water inlet and outlet diameter	Φ20mm (outer diameter)	Φ25mm (outer diameter)	Φ20mm (outer diameter)	Φ25mm (outer diameter)	Φ38mm (outer diameter)
Service life	20000 hours				
Use ambient temperature	-40℃ -100℃				
Storage temperature	-40℃ -100℃				
Protection class	IP67				
Circulating medium	antifreeze				



Electric water pump



OE-W004



Features: small size, light weight, compact structure, wide range of applicable environments, platform development and design. Under the same shape, different speed, power and lift requirements of different vehicles can be met by PWM speed regulation. The pump has functions such as constant power, over- voltage protection, stall protection, dry running protection, reverse connection protection, and soft start.

Product number	02.06.502.1XXX	02.06.502.2XXX	02.06.502.3XXX
Rated voltage	DC 24V		
voltage range	DC18-28V		
Water inlet and outlet diameter	Φ38mm (outer diameter)		
Service life	20000 hours		
Use ambient temperature	-40℃ -80℃	-40℃ -85℃	-40℃ -85℃
Storage temperature	-40℃ -80℃	-40℃ -85℃	-40℃ -85℃
Protection class	IP56	IP67	IP67
Circulating medium	antifreeze		
noise	≤65db		
Pump weight	2.29Kg		



Electric water pump



OE-W005



Features: small size, light weight, compact structure, wide range of applicable environments, platform development and design. Under the same shape, different speed, power and lift requirements of different vehicles can be met by PWM speed regulation. The pump has functions such as constant power, over-voltage protection, stall protection, dry running protection, reverse connection protection, and soft start.

Product number	02.03.602.XXXX
Rated voltage	DC 24V
voltage range	DC18~32V
Water inlet and outlet diameter	Φ38mm (outer diameter)
Service life	20000 H
Use ambient temperature	-50℃ ~ 125℃
Storage temperature	-50℃ ~ 125℃
Protection class	IP68
Circulating medium	antifreeze
noise	≤60 dB (measured at a distance of 1 meter)
Pump weight	1.74 \ 2.10 Kg (without bracket \ with standard bracket)

06

Controller for EHPS & Air Brake



Controller for EHPS & Air Brake



Main technical parameters	
Rated power:	2.2KW/3.7KW/5.5KW
Input voltage range:	220V~750V DC
Output voltage:	220VAC/380VAC
Level of protection:	IP 67
Control mode:	CAN



Controller for EHPS & Air Brake



- Forced water cooling
- Plug and play self – identification technology is adopted
- Output voltage ripple coefficient small volume, high protection level
- Power on buffer, temperature detection, input anti – reverse connection, input and output over – voltage
- Undervoltage protection, overcurrent protection, current limiting protection, overload protection and other functions

Main technical parameters	
Rated power:	1.5KW/2KW/3KW
Input voltage range:	200V~750V DC
Output voltage:	DC 14V (1.5KW/2KW, 10~16V) /DC 27V (3KW)
Voltage stabilizing accuracy:	≤2%
Level of protection:	IP 67
Control mode:	CAN/Digital level enablement
Cooling mode:	Water cooled
External dimension:	225*125*55mm (1.5KW/2KWSingle mode /235*120*58.5mm (3KW Single mode)



Controller for EHPS & Air Brake



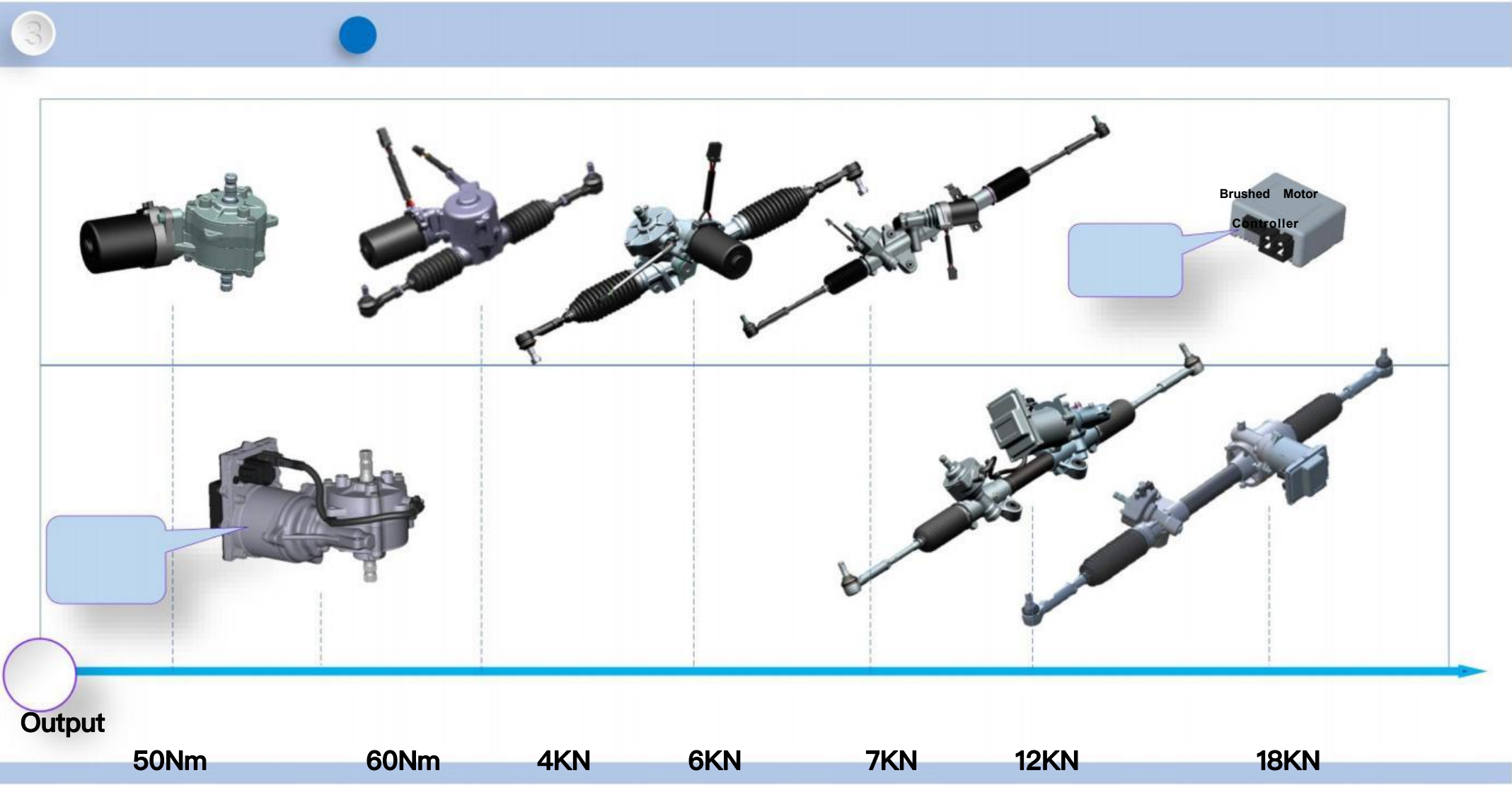
Requirements		Specification
Machine parameter	DC rated voltage level	540V
	DC supply voltage range	450-750V
	cooling method	Air-cooled
	communication method	CAN
	Protection level	IP67
	Cabinet material	Cast aluminum
	Control voltage	24V
	Working noise	< 60dB
	Operating temperature	－40℃ ～ +65℃
	CAN function	communication
	volume	465×375×167mm
	weight	17.5kg
	Grounding requirements	The two-in-one shell needs to be grounded separately, with a grounding wire diameter ≥6mm ²
DCAC steering pump	Rated output power	5.5KW
	Rated power efficiency	≥95%
	Rated output voltage / current	380V/13A/220VAC
	control method	CAN
DCAC Air compressor	Rated output power	5.5KW
	Rated power efficiency	≥95%
	Rated output voltage / current	380VAC/13A/22VAC
	control method	CAN
DCDC	3kw , 12V /24V	

07

Electric power steering rack



Electric power steering rack





Electric power steering rack



OE-S380&S220 — EPS for UTV&ATV



Waterproof EPS system is developed and mass produced to meet UTV&ATV manufacturers' requirements.

Waterproof and dust proof grade is IP67+ .
Can work in high temperature and other harsh environment.

Compact structure allows an easy installation.
Capable of designing according to customers' requirements.





Electric power steering rack



OE-SC004A— CEPS

- Typical application
- Small unmanned sightseeing vehicles;
- Golf carts;
- Boat races, modified cars, and more.



Steering System	
Type	Column-assist type
ECU control current	65A
Operating voltage	DC 12V
Maximum output torque	46Nm
Steering shaft maximum load (reference)	700kgs
Degree of protection	EPS: IP67 ECU: IP52



Electric power steering rack



OE-SC004— CEPS

- Typical application
- Medium- sized unmanned sightseeing vehicle;
- Driverless UTVs.



Steering System	
Type	Column-assist type
ECU control current	80A
Operating voltage	DC 12V
Maximum output torque	54Nm or 61Nm
Steering shaft maximum load (reference)	850kgs
degree of protection	EPS: IP67



Electric power steering rack



OE-S001— CEPS



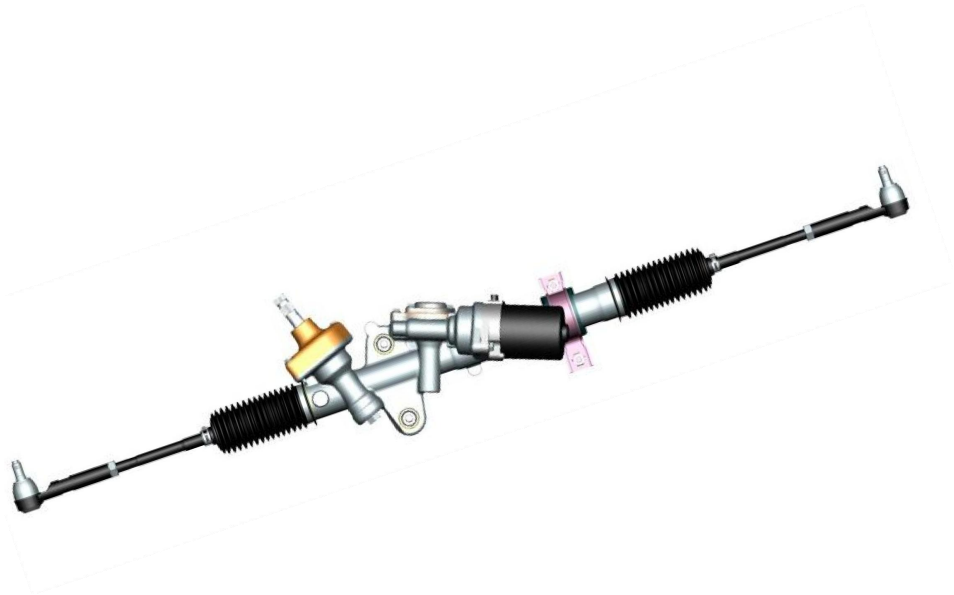
Steering System	
Type	Pinion-assist type
ECU control current	65A
Operating voltage	DC 12V
Rack stroke & ratio	±50mm & 129mm/rev
Maximum rack force	3000N



Electric power steering rack



OE-S002 — DP-EPS for Pick up, Cars



Application

Both fuel vehicles and new energy vehicles can be carried;
The maximum load of the front axle of the vehicle: 1350Kgf;
Practical application of electric logistics vehicles;
Adaptable to ADAS and autonomous driving needs.

Steering System	
Type	Pinion-assist type
ECU control current	65A
Operating voltage	DC 12V
Rack stroke & ratio	±78mm & 50.27mm/rev
Maximum rack force	6000N



Electric power steering rack



OE-S003 — DP-EPS for Pick up, Cars



- Typical application
- Right rudder sea lion cub



Steering System	
Type	Pinion-assist type
ECU control current	65A
Operating voltage	DC 12V
Rack stroke & ratio	±79mm & 50.27mm/rev
Maximum rack force	7000N



Electric power steering rack



OE-S004

Steering System	
型式 Type	小齿轮助力式 Pinion-assist type
最大供电电流 Power supply current	65A
工作电压 Operating voltage	DC 12V
齿条行程及线角传动比 Rack stroke & ratio	±50mm & 42.76mm/rev
最大输出齿条力 Maximum rack force	4KN





Electric power steering rack



OE-S005

- Typical application
- Right rudder narrow body sea lion;



Steering System	
Type	Pinion-assist type
ECU control current	80A
Operating voltage	DC 12V
Rack stroke & ratio	±78mm & 56.55mm/rev
Maximum rack force	11000N



Electric power steering rack



OE-S005C



- Typical application
- Right rudder wide body sea lion;



Steering System	
Type	Pinion-assist type
ECU control current	126A
Operating voltage	DC 12V
Rack stroke & ratio	±67.5mm or ±78mm & 50.46mm/rev
Maximum rack force	12000N



Electric power steering rack



OE-S005D



- Typical application
- Right rudder wide body sea lion;



Steering System	
Type	Pinion-assist type
ECU control current	80A
Operating voltage	DC 12V
Rack stroke & ratio	78mm & 50.46mm/rev
Maximum rack force	12000N



Electric power steering rack



OE-S006A



- Typical application
- Left rudder wide body sea lion;



Steering System	
Type	Pinion-assist type
ECU control current	80A
Operating voltage	DC 12V
Rack stroke & ratio	78mm & 50.46mm/rev
Maximum rack force	12000N



Electric power steering rack



OE-S006B

- Typical application
- Left rudder narrow body sea lion;
- Large Ride- by- Wire Chassis.



Steering System	
Type	Pinion-assist type
ECU control current	80A
Operating voltage	DC 12V
Rack stroke & ratio	78mm & 50.46mm/rev
Maximum rack force	11000N



Electric power steering rack



OE-R003



- Typical application
- 8.5 m electric bus

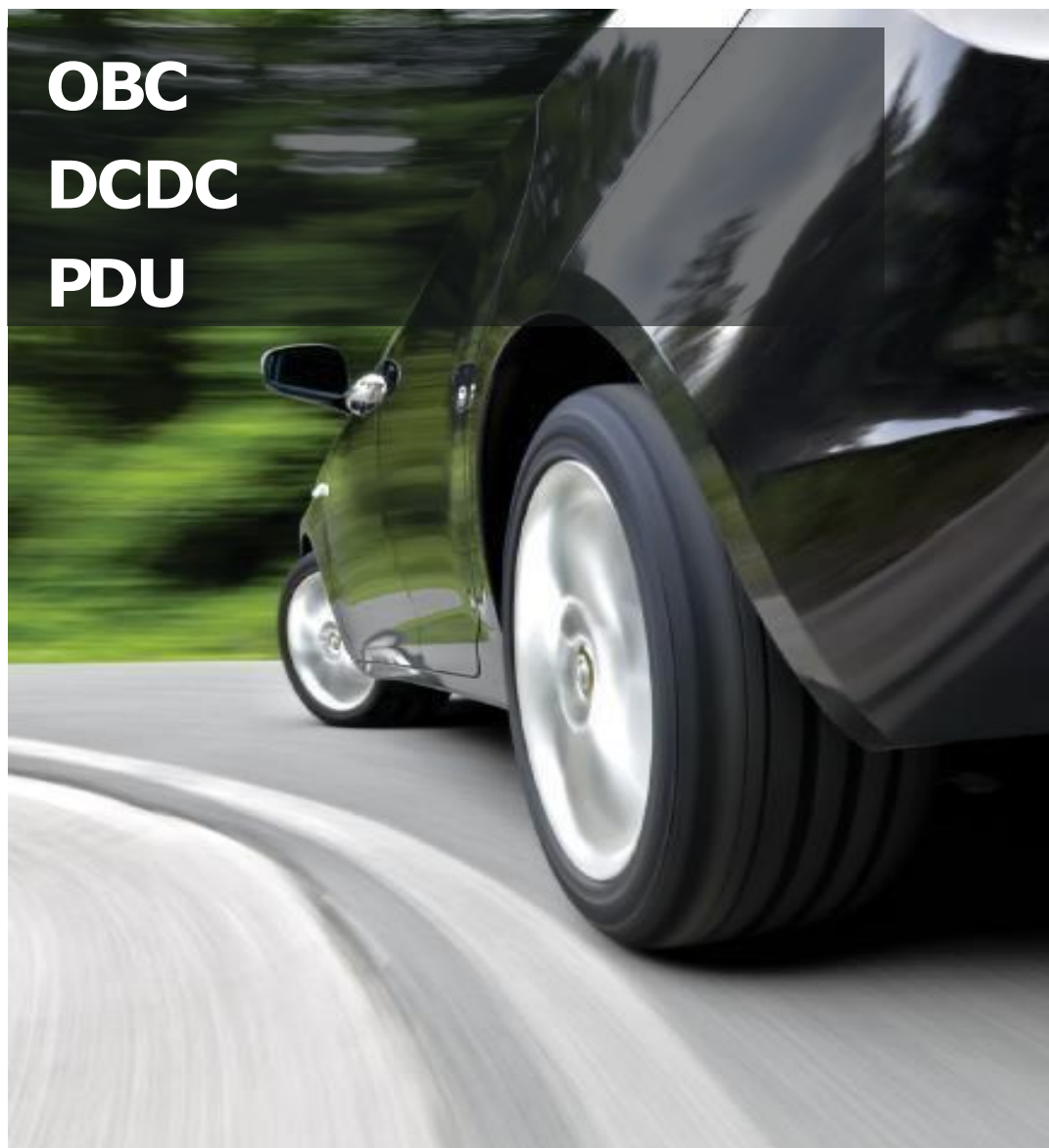


Steering System	
Type	R-EPS
ECU control current	40A
Operating voltage	DC 24V
Rack stroke & ratio	137mm & 50.4mm/rev
Maximum rack force	18000N

08

DCDC, OBC, PDU

OBC
DCDC
PDU



2.2KW
OBC
Air cooling



3.3KW
OBC
Liquid cooling



6.6KW
OBC
Liquid cooling



6.6KW
OBC
Liquid cooling



1.4KW
DCDC
Liquid cooling



1.5KW
DCDC
Liquid cooling



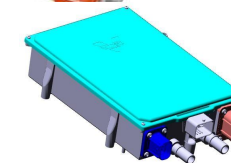
3.3KW
OBC
Air cooling



3.3KW
OBC
Air cooling



6.6KW
Bi-OBC
Liquid cooling



1.2KW
DCDC
Natural cooling



1.2KW
DCDC
Liquid cooling



2KW
DCDC
Liquid cooling





DCDC, OBC,PDU



OBC DCDC PDU



2.5KW

DCDC
Liquid cooling



2KW

DCDC
Liquid cooling



6.6KW

OBC+2.5KW DCDC
Liquid cooling



2.5KW

DCDC
Liquid cooling



3.3KW

OBC+1.2KW DCDC
Air cooling



6.6KW

OBC+2KW DCDC
Liquid cooling



3.3KW

OBC+2KWDCDC+PDU
Air cooling



6.6KW

OBC+PDU
Liquid cooling



3.3KW

OBC+3KW DCDC
Liquid cooling



6.6KW

Bi-OBC+PDU
Liquid cooling



6.6KW

OBC+2KW DCDC
Liquid cooling



6.6KW

OBC+1.5KW DCDC+PDU
Liquid cooling





THANK YOU