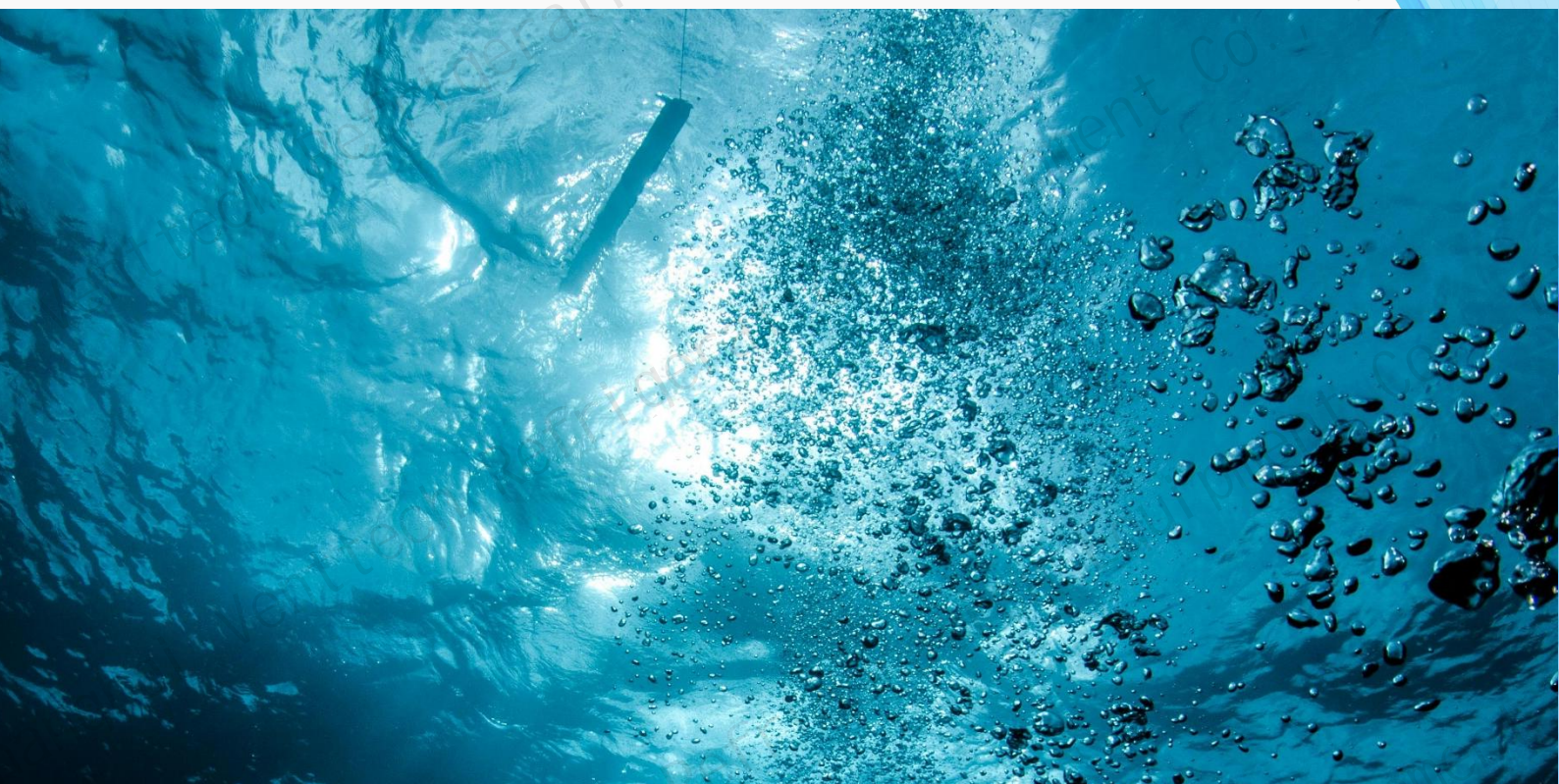




上海樊太制冷设备有限公司

Shanghai Venttech Refrigeration Equipment Co., Ltd



下一代数字基础设施 绿色液冷一体化方案

NEXT GENERATION DIGITAL INFRASTRUCTURE

GREEN LIQUID COOLING INTEGRATED SOLUTION

关于我们/ABOUT US

上海樊太是集研发设计、生产制造、营销服务、工程安装和运营管理于一体的科技企业。

从 2015 年开始，我们专注于为数据中心、电网储能、高精度实验环境、电力电子散热和工业自动化等场景提供制冷产品、散热和环境控制管理解决方案。

公司致力于为边缘计算场景、数据中心、超算中心、移动通信基站及新能源储能等领域客户提供高可靠性和高效能的液冷产品及服务。

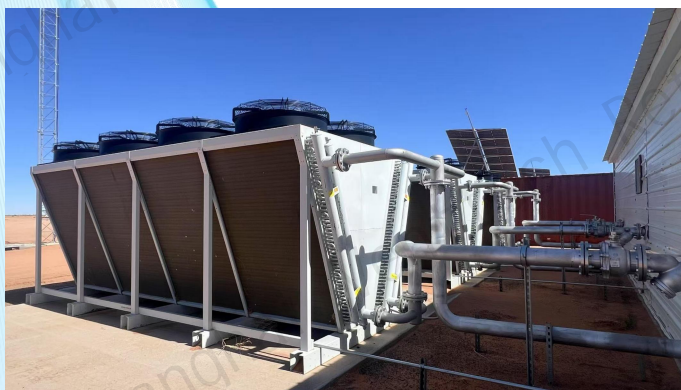
我们于 2020 年启动了第一个液冷项目（美国 50MW），迄今已完成 80 多个项目。

Shanghai Venttech is a technology enterprise that integrates research and development design, production and manufacturing, marketing services, and operation management.

We focus on providing refrigeration products, heat dissipation, and environmental control management solutions for scenarios such as data centers, power grid energy storage, high-precision experimental environments, power electronics heat dissipation, and industrial automation from 2015.

We are committed to providing highly reliable and efficient liquid cooling products and services for customers in edge computing scenarios, data centers, supercomputing centers, mobile communication base stations, new energy storage and other fields.

We started our first liquid cooling project in 2020 (50MW, USA) and have completed more than 80 projects so far.



冷板式液冷产品 COLD PLATE LIQUID COOLING PRODUCTS

Rack mounted CDU30/60/80				
Model		VT-BCDU-30	VT-BCDU-60	VT-BCDU-80
Rated heat exchange capacity /kw		30	60	80
Power supply		220V 1PH 50Hz		
Unit performance parameters				
Primary side Temp 35/42℃, Secondary side Temp 40/47℃	Secondary side flow rate-m³/h	3.94	7.65	10.05
	Primary side flow rate-m³/h	3.94	7.65	10.05
	Rated power-kw	0.59	0.91	1.13
	FLA-A	4.26	5.97	8.81
Primary side medium		Softened water, ethylene glycol solution		
Secondary side medium		Deionized water, coolant		
Performance parameters of				
Qty		1 or 1+1 redundancy		
Rated power of circulating pump-kW		0.54	0.86	1.08
Connection				
Primary side pipeline		DN32	DN40	DN40
Secondary side pipeline		DN32	DN40	DN40
Interface type		Chuck	Chuck	Chuck
Unit weight and dimension				
Weight-KG		45	70	70
Height x width x depth-mm		220×440×850 (5U)	440×440×850 (10U)	440×440×850 (10U)

Product Features

- **Efficient and energy-saving:** supports natural cooling throughout the year, ultra-low energy consumption;
- **High reliability:** redundant key components, anti condensation function, support for dual power supply function, leakage detection function for 24Hx365 days, uninterrupted continuous operation life not less than 10 years;
- **High applicability:** wide range of refrigeration capacity and pressure difference adjustment, supporting infinite adjustment;
- **Highly clean:** sanitary grade pipelines, high-precision filtration;
- **Communication method:** Supports RS485 serial port, RJ45 network port;
- **Communication protocol:** Supports standard protocols such as Modbus, TCP, UDP, etc;

Cabinet CDU 100/200/300				
Model		VT-GCDU-100	VT-GCDU-200	VT-GCDU-300
Rated heat exchange capacity /kw		100	200	300
Power supply		380V 3PH 50Hz		
Unit performance parameters				
Primary side Temp 35/42℃, Secondary side Temp 40/47℃	Secondary side flow rate-m³/h	12.51	24.78	37.37
	Primary side flow rate-m³/h	12.51	24.78	37.37
	Rated power-kw	1.39	2.57	3.32
	FLA-A	2.91	5.35	6.67
Primary side medium		Softened water, ethylene glycol solution		
Secondary side medium		Deionized water, coolant		
Performance parameters of circulating pump				
Qty		1 or 1+1 redundancy		
Rated power of circulating pump-kW		1.34	2.52	3.27
Connection				
Primary side pipeline		DN50	DN80	DN100
Secondary side pipeline		DN50	DN80	DN100
Interface type		Chuck	Chuck	Chuck
Unit weight and dimension				
Weight-KG		260	300	370
Height x width x depth-mm		2000×600×1200	2000×600×1200	2000×600×1200

Cabinet CDU 400/800/1500				
Model		VT-FCDU-400	VT-FCDU-800	VT-FCDU-1500
Rated heat exchange capacity /kw		400	800	1500
Power supply		380V 3PH 50Hz		
Unit performance parameters				
Primary side Temp 35/42℃, Secondary side Temp 40/47℃	Secondary side flow rate-m³/h	49.26	98.16	184.19
	Primary side flow rate-m³/h	49.26	98.16	184.19
	Rated power-kw	4.16	7.42	13.54
	FLA-A	8.54	15.11	26.92
Primary side medium		Softened water, ethylene glycol solution		
Secondary side medium		Deionized water, coolant		
Performance parameters of circulating pump				
Qty		1 or 1+1 redundancy		
Rated power of circulating pump-kW		4.11	7.37	13.49
Connection				
Primary side pipeline		DN100	DN150	DN200
Secondary side pipeline		DN50	DN80	DN100
Secondary side pipeline		Flange	Flange	Flange
Unit weight and dimension				
Weight-KG		420	610	810
Height x width x depth-mm		2000×800×1200	2000×800×1200	2000×800×1200



上海樊太制冷设备有限公司

Shanghai Venttech Refrigeration Equipment Co., Ltd