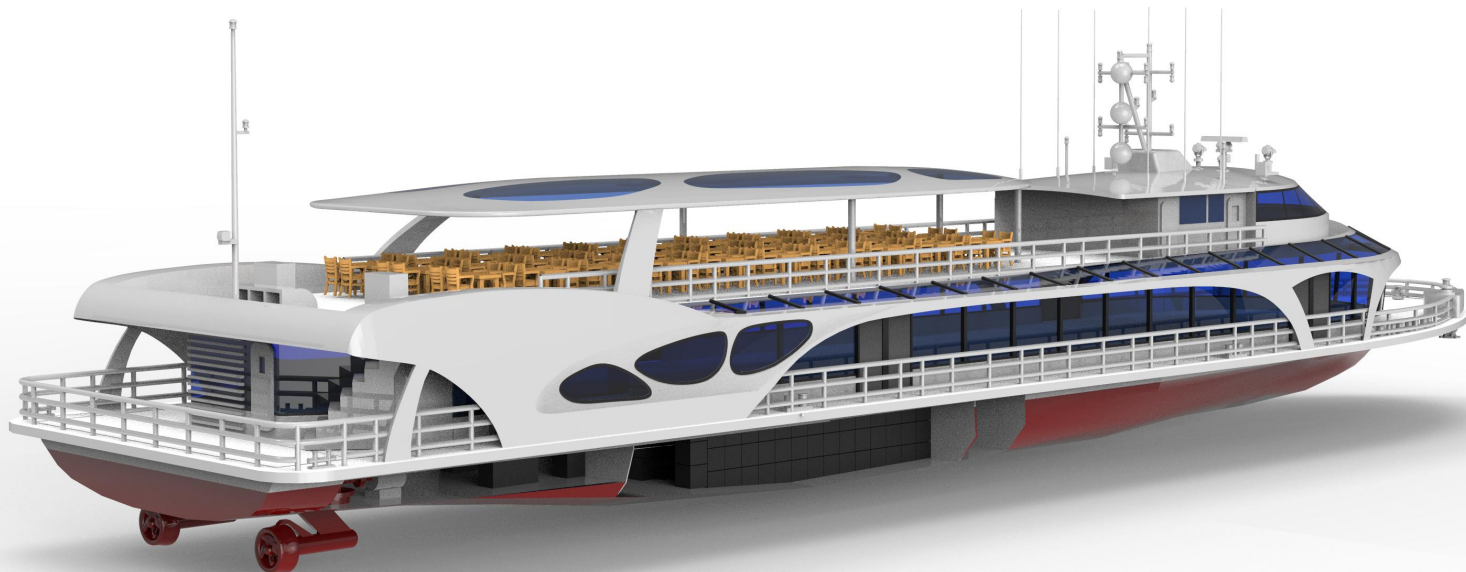


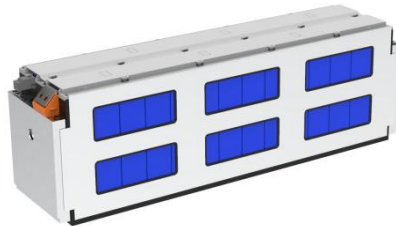
// Battery System for ship



System Design



Cell



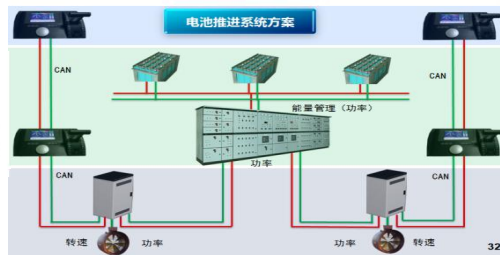
Module



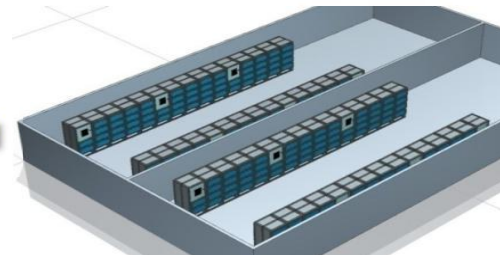
Pack



Electric Ships



Electric Propulsion System



System

Application



Cruise ship



Ferry



Official vessels/
water surveillance vessels



Yachts



Wind power installation platform



Drilling rigs



Roll-on/roll-off vessels



Offshore Support Vessel



Bulk Carrier



Container ship



LNG



Tugboat

System Parameters

No.	Battery Power (kWh)	Capacity of Battery Cell (Ah)	Single Voltage (VDC)			Battery Group	Parallel	Series	System Voltage (VDC)			System Capacity(Ah)	Capacity of box approved by CCS				A box Spec	A box Weight	B box Spec	B box Weight	C box Spec	C box Weight	D box Spec	D box Weight	Battery box Total weight	Energy Density	System level allows charging current		Ship type/ Driving System
			Lower limit	Rated	Upper limit				Lower limit	Rated	Upper limit		A	B	C	D													
22	483. 84	105	2.9	3.2	3.50	2	4	180	522.0	576.0	630.0	420	40				2P18S	95	3P12S	95	1P12S	80	1P30S	200	3800	127	2	420	Cruise ship/sightseeing boat/hybrid ship 、 Dual main propulsion/auxiliary propulsion, retrofit ship, new shipbuilding
23	725. 76	105	2.9	3.2	3.50	2	6	180	522.0	576.0	630.0	630		60			2P18S	95	3P12S	95	1P12S	80	1P30S	200	5700	127	2	630	
24	645. 12	280	2.9	3.2	3.50	2	2	180	522.0	576.0	630.0	560			60		2P18S	95	3P12S	95	1P12S	80	1P30S	200	4800	134	2	560	
25	645. 12	280	2.9	3.2	3.50	2	2	180	522.0	576.0	630.0	560				24	2P18S	95	3P12S	95	1P12S	80	1P30S	200	4800	134	2	560	
26	532. 22	105	2.9	3.2	3.50	2	4	198	574.2	633.6	693.0	420	44				2P18S	95	3P12S	95	1P12S	80	1P30S	200	4180	127	2	420	
27	774. 14	105	2.9	3.2	3.50	2	6	192	556.8	614.4	672.0	630		64			2P18S	95	3P12S	95	1P12S	80	1P30S	200	6080	127	2	630	
28	688. 13	280	2.9	3.2	3.50	2	2	192	556.8	614.4	672.0	560			4	24	2P18S	95	3P12S	95	1P12S	80	1P30S	200	5120	134	2	560	
29	731. 14	280	2.9	3.2	3.50	2	2	204	591.6	652.8	714.0	560			8	24	2P18S	95	3P12S	95	1P12S	80	1P30S	200	5440	134	2	560	
30	798. 34	105	2.9	3.2	3.50	2	6	198	574.2	633.6	693.0	630	66				2P18S	95	3P12S	95	1P12S	80	1P30S	200	6270	127	2	630	
31	1161. 22	105	2.9	3.2	3.50	2	9	192	556.8	614.4	672.0	945		96			2P18S	95	3P12S	95	1P12S	80	1P30S	200	9120	127	2	945	
32	1032. 19	280	2.9	3.2	3.50	2	3	192	556.8	614.4	672.0	840			6	36	2P18S	95	3P12S	95	1P12S	80	1P30S	200	7680	134	2	840	
33	1096. 70	280	2.9	3.2	3.50	2	3	204	591.6	652.8	714.0	840			12	36	2P18S	95	3P12S	95	1P12S	80	1P30S	200	8160	134	2	840	

Contact us

Address: 2328 Chunshen Road, Minhang District, Shanghai
Tel: 86-21-54381147
Mobile: 86-13611656385
Email: sales@brogentech.com
Skype/Whatsapp: 8613611656385

Project Cases

Xinjiang Tianchi sightseeing boat

In October 2018, four pure electric environmental protection cruise ships officially started operating in the Tianchi scenic area of Tianshan, successfully promoting the green and environmental protection construction of the Tianchi scenic area.

Detail:

- ◆ Length: 30 m
- ◆ Passenger capacity: 110
- ◆ Voltage: 624 V
- ◆ Energy: 448 kWh
- ◆ Power: 75 kW
- ◆ Cruise duration: 5-8h/ full charge



Project Cases

Wuhan Yangtze River passenger ferry

September 12, 2019, CCS entry-level licensing of the first domestic lithium battery The 300-passenger Jun Travel, a purely electric vessel, was launched in Wuhan Smooth water connection! Using "EVE" lithium battery, the power is up to 2240kWh.

Detail:

- ◆ Length: 52.5 m
- ◆ Passenger capacity : 300
- ◆ Energy: 2240kWh
- ◆ Voltage: 518V
- ◆ Power: 200kw*2



Project Cases

Pearl River Cruise - 280 passenger seats

- ◆ Pearl River Tour New Energy Cruise Ship
- ◆ First commercially operated new energy passenger ship to enter the Greater Bay Area of Guangdong, Hong Kong, and Macao

Detail:

- ◆ Length: 38.8m
- ◆ Passenger capacity: 280
- ◆ Energy: 2500kWh
- ◆ Speed: 10kn



Project Cases

4000HP pure electric tugboat

- ◆ Currently, the largest domestically operated pure electric ship
- ◆ The first pure battery-powered port operation ship in China
- ◆ Practicing the national green port strategy, it plays a leading role in demonstrating the electrification of inland and coastal tugboats for the country

Details:

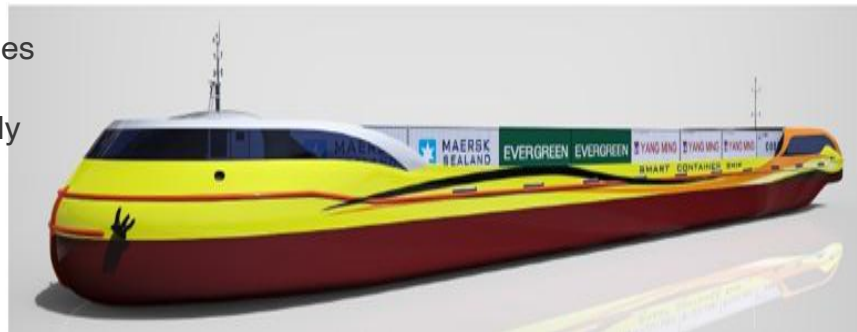
- ◆ Length: 38.8m
- ◆ Energy: 5000kWh



Project Cases

64TEU pure electric container ship

- ◆ China's first pure electric container ship powered by batteries
- ◆ China's first electric ship using a ship-to-shore power supply and battery swapping mode
- ◆ The first river container ship equipped with an axle-less wheel flange propulsion system and an intelligent ship-assisted driving system in China.
- ◆ The first inland ship designed and built according to the third level certification standard for green ships in the country.



Details:

- ◆ Length: 65m
- ◆ Energy: 6528kWh