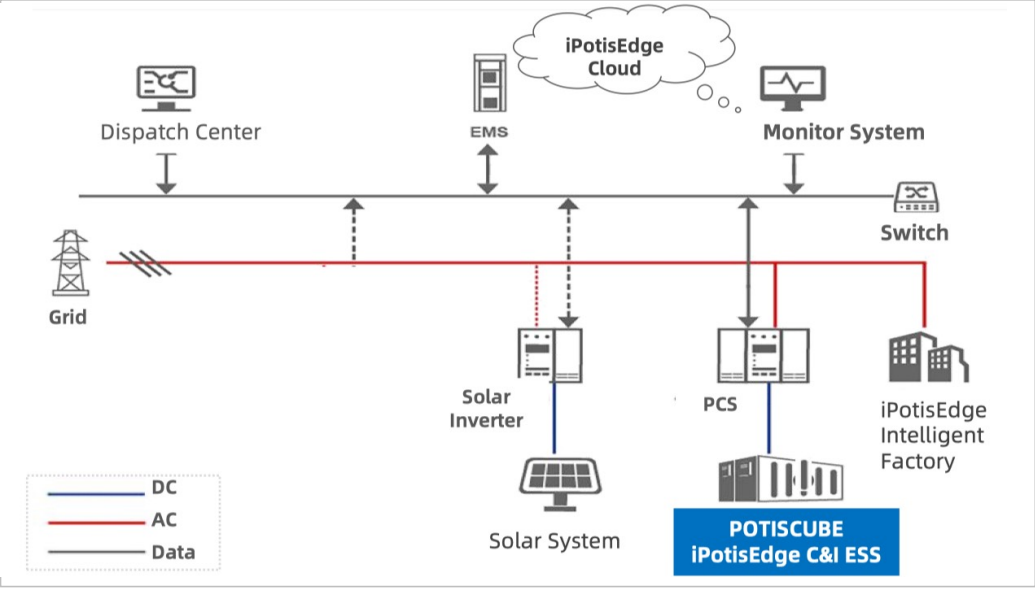


Liquid-Cooling ESS: PotisCube-L-215 | PotisCube-L-430

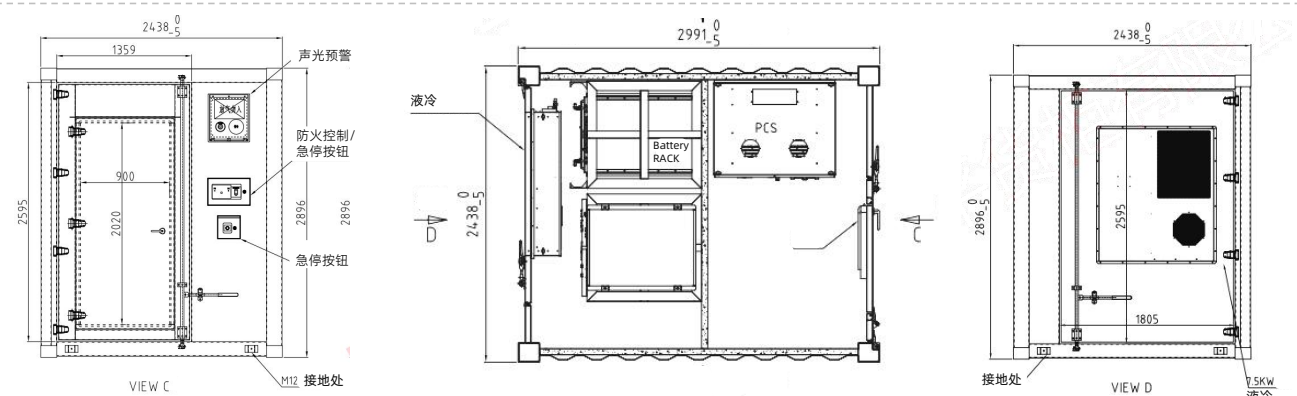
One-stop solutions for Commercial and Industrial(C&I) facilities



Increase the energy independence of schools, factories and other commercial complexes with high energy demand, and reduce reliance on grid power through solar PV and battery storage. We provide one-stop energy storage solutions for commercial and industrial complexes, saving customers money on electricity, reducing the impact of rising electricity prices, generating additional revenue from renewable energy, reducing environmental impact, and ensuring electricity stability and affordability.

Outdoor Distributed Energy Storage System

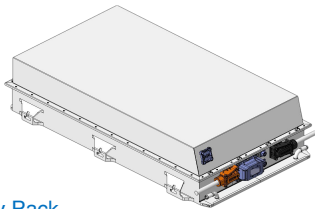
<p><b>Cost-effective</b></p> <ul style="list-style-type: none"><li>✓ Pre-assembly and commissioning before shipment, shortening construction time and reducing construction costs.</li><li>✓ Liquid-cooled design reduces system energy consumption by 20% and increases battery life by 10%</li></ul>	<p><b>Safe &amp; Reliable</b></p> <ul style="list-style-type: none"><li>✓ IP55 outdoor enclosure protection level, optional C5 corrosion resistance level</li><li>✓ Liquid cooling ensures higher efficiency and longer cell cycle life</li></ul>
<p><b>Active system-level security protection</b></p> <ul style="list-style-type: none"><li>✓ Integrated intelligent BMS and optional cloud EMS</li><li>✓ Fast condition monitoring and fault logging for early warning and fault location</li></ul>	<p><b>Reliable quality assurance</b></p> <ul style="list-style-type: none"><li>✓ High standard quality control system - ISO 26262 and IATF 16949 certification</li><li>✓ Quality assurance and control mechanisms throughout the process - ensuring that our products are of the highest quality and guarantee long-term safe and reliable operation</li></ul>



Storage system, PCS and transformer are integrated in a 10ft container.

## Liquid Cooling ESS: PotisCube-L-215 | PotisCube-L-430

Standard 10-foot container: integrated energy storage system, PCS and transformer



[Liquid Cooled LFP Battery Pack](#)

Item	Parameters
Battery Type	LFP
Configuration	1P30S
Nominal capacity	26.88kWh
Voltage range	75V~109.5V
Charge/discharge ratio	0.5P
Protection	IP67
Design standards	GB/T 36276-2018, UL1973, UL9540, UL9540A, UN38.3, IEC62619, NFPA69, NFPA70, NFPA855,NFPA68
Environment temperature	-20°C to 55°C(-4°to 131°F)
Thermal management	Liquid cooling
Size(L*W*H)mm	968×625×260
Weight (kg)	195

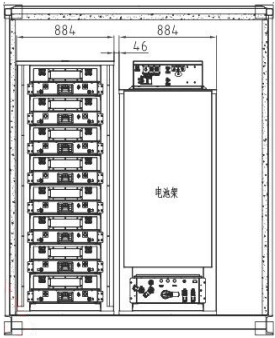
[PCS](#)

Item	Parameters
Rated AC power(kW)	100
Grid voltage(Vac)	400
Max. DC voltage(Vdc)	850
Battery voltage(Vdc)	500~850
Frequency (Hz)	50/60
Dimension(L×W×H)(mm)	800*2260*800
Weight (Kg)	750



### Contact us

Address: 2328 Chunshen Road, Minhang District, Shanghai  
Tel: 86-21-54381147  
Mobile: 86-13611656385  
Email: sales@brogentech.com  
Skype/Whatsapp: 8613611656385



[Battery Energy Systems](#)

Item	PotisCube-L-215	PotisCube-L-430
Configuration	1P240S	2P240S
Nominal capacity	215kWh	430kWh
Voltage range	648 V ~ 876 V	
Charge/discharge ratio	0.5P	
Protection	IP55	
Container type	10'(half of 20ft container)	
Design standards	GB/T 36276-2018, UL1973, UL9540, UL9540A, UN38.3, IEC62619, NFPA69, NFPA70, NFPA855,NFPA68	
Environment temperature	-20°C to 55°C(-4°to 131°F)	
Thermal management	Liquid cooling	
Size(L*W*H)mm	2991×2438×2896	
Weight(T)	5.8	7.5

[Fire Control and Safety](#)

- ✓ Battery pack level fire protection
- ✓ Perfluorohexanone environmental cleaning fire extinguishing agent
- ✓ Equipped with smoke, temperature and combustible gas detectors
- ✓ Accurate positioning and timely fire fighting
- ✓ Fire system and BMS linkage control to protect system safety