

**MAXX**

**轮式装载机**  
**WHEEL  
LOADER**



**上海迈可斯工程机械有限公司**  
Shanghai Maxx Construction Machinery Co., Ltd.

电话Phone No. : 0086 139 1679 5544  
邮箱E-Mail: maxxmachinery@protonmail.com

**上海迈可斯工程机械有限公司**  
Shanghai Maxx Construction Machinery Co., Ltd.

COMPANY PROFILE



**2002**  
成立年份  
Establishment time

**100,000**  
公司占地面积  
Company Floor Area

**100,000,000 USD**  
总投资  
Investment

**1000**  
员工  
Employee

**100+**  
中高级技术人员  
Middle and senior technical personnel

**100**  
代理经销和直营门店  
Number of stores

**20,000**  
年产量  
Annual output

上海迈可斯工程机械有限公司是全球领先的工程机械产品制造公司。成立于2002年，投资超过1亿美元。总部位于中国山东省，占地面积10万平方米，拥有三个工厂，员工1000余人。迈可斯在全球拥有100多家经销商和20多家机械专卖店，年产量超过2万台。迈可斯一直致力于尖端技术研发，优先考虑产品质量，并提供卓越的客户服务。

在技术研发方面，迈可斯以不懈的创新精神和强大的研发团队为支持，始终处于行业的前沿。我们投入大量资源用于研究新技术、新材料和新工艺，以确保我们的产品在性能、效率和功能方面保持领先地位。通过与国内外优秀研究机构和高校的合作，我们不断推动装载机技术的发展，满足客户不断增长的需求。

对质量的重视是我们公司文化的核心。我们采用严格的质量管理体系，从原材料采购到生产制造，从成品检验到售后服务，每一个环节都严格把关，确保产品的稳定性和可靠性。我们的产品通过了ISO和CE等国际认证，证明其符合全球质量标准。

客户服务是我们经营理念的重要组成部分。我们始终以客户为中心，倾听客户需求，并提供个性化定制解决方案。我们的销售团队经过专业培训，能够为客户提供专业的咨询和支持。同时，我们建立了全球销售网络，与客户保持紧密联系，及时响应和解决问题，确保客户满意度的持续提升。

作为一家全球化企业，迈可斯在国际市场上具有丰富的销售经验。我们的产品远销全球多个国家和地区，深受客户的信赖和好评。我们与国外合作伙伴建立了长期稳定的合作关系，通过专业的销售和售后服务，为全球客户提供卓越的装载机产品和解决方案。

迈可斯以技术研发领先、重视质量、重视客户服务和全球销售经验为核心竞争力，我们将继续致力于创新和卓越，为客户提供高品质的装载机产品和优质的客户体验。

Shanghai Maxx Construction Machinery Co., Ltd. is a world-leading construction machinery product manufacturing company. It was founded in 2002 with an investment of more than 100 million US dollars. It is headquartered in Shandong Province, China, covering an area of 100,000 square meters, with three factories and more than 1,000 employees. Maxx has more than 100 distributors and more than 20 machinery stores around the world, with an annual output of more than 20,000 units. Maxx has been committed to cutting-edge technology research and development, prioritizing product quality, and providing excellent customer service.

In terms of technological advancement, Maxx stays at the forefront of the industry, driven by relentless innovation and a strong research and development team. We allocate substantial resources to explore new technologies, materials, and processes, ensuring our products maintain a competitive edge in terms of performance, efficiency, and functionality. Through collaborations with esteemed research institutions and universities, we continuously drive the development of loader technology to meet the evolving needs of our customers.

Quality is the cornerstone of our company culture. We implement stringent quality management systems, overseeing every aspect from raw material procurement to manufacturing, and from finished product inspections to after-sales services. This ensures the stability and reliability of our products. Our loaders have obtained international certifications such as ISO and CE, demonstrating their compliance with global quality standards.

Customer service is an integral part of our business philosophy. We always place the customer at the center of our operations, attentively listening to their needs and providing personalized and customized solutions. Our sales team, equipped with professional training, offers expert consultation and support. Additionally, we have established a global sales network to maintain close communication with customers, promptly address and resolve issues, and continuously enhance customer satisfaction.

As a global enterprise, Maxx boasts extensive experience in international sales. Our products are exported to numerous countries and regions worldwide, earning trust and acclaim from our customers. We have established long-term and stable partnerships with foreign collaborators, delivering exceptional loader products and solutions to customers globally through professional sales and after-sales services.

Maxx with our emphasis on technological research and development, commitment to product quality, exceptional customer service, and global sales experience, continues to strive for innovation and excellence, providing customers with high-quality loader products and an outstanding customer experience.

# Assembly Capacity

**切割焊接设备** CUTTING AND WELDING 公司产品的结构件切割，全部采用国际先进的精度在0.01mm激光切割机，并配备全自动焊接机器人，不仅保证了焊缝的美观，更保障了产品的品质。

The structural components of our products are cut using internationally advanced precision laser cutting machines with an accuracy of 0.01mm. Equipped with fully automated welding robots, we not only guarantee the aesthetics of weld seams but also ensure product quality.



## 特调油漆

SPECIAL PAINT

公司不惜成本采用特质的小装专用特调油漆，成本高于市场5倍以上，具有硬度高、耐高低温、防腐蚀和防锈功能。驾驶室和发动机后盖油漆都采用电泳防锈工艺。大大提高产品寿命和美观度，更加提高了二手车的市场保值率。

Adopting the characteristic Xiaozhuang special paint, it has high hardness, high and low temperature resistance, anti-corrosion and rust prevention functions. The paint on the driver's cab and engine rear cover adopts electrophoretic rust prevention technology. Greatly improving product lifespan and aesthetics, further enhancing the market resale value of used cars



## 装配能力

ASSEMBLY CAPABILITY

100%自主研发的装配生产线，合理安排的工艺流程以及严格的质检记录，不仅提高了产品质量和稳定性，更能将产能扩大。

Our assembly production line, which is 100% independently developed, along with well-planned process flows and stringent quality inspection records, not only improves product quality and stability but also expand production capacity.



## 备件供应能力

SPARE PARTS SUPPLY CAPABILITY

上万种的配件供应配套能力，能满足市场上任何品牌的小型装载机配件更换需求。

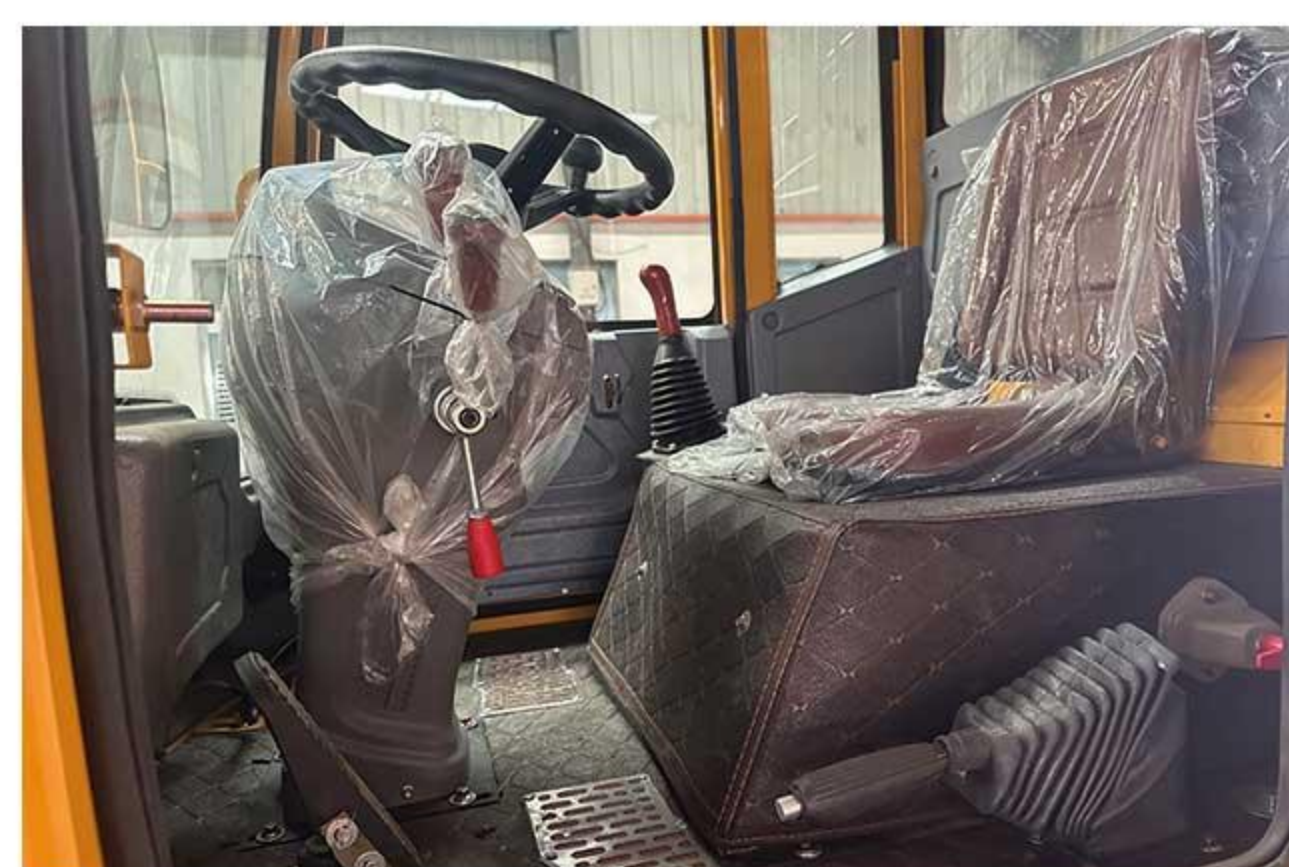
With the capacity to supply over tens of thousands of types of accessories, we can meet the replacement needs of any brand of small wheel loaders in the market.



# ZL920轮式装载机

0.5m<sup>3</sup> 1000kg

# ZL920

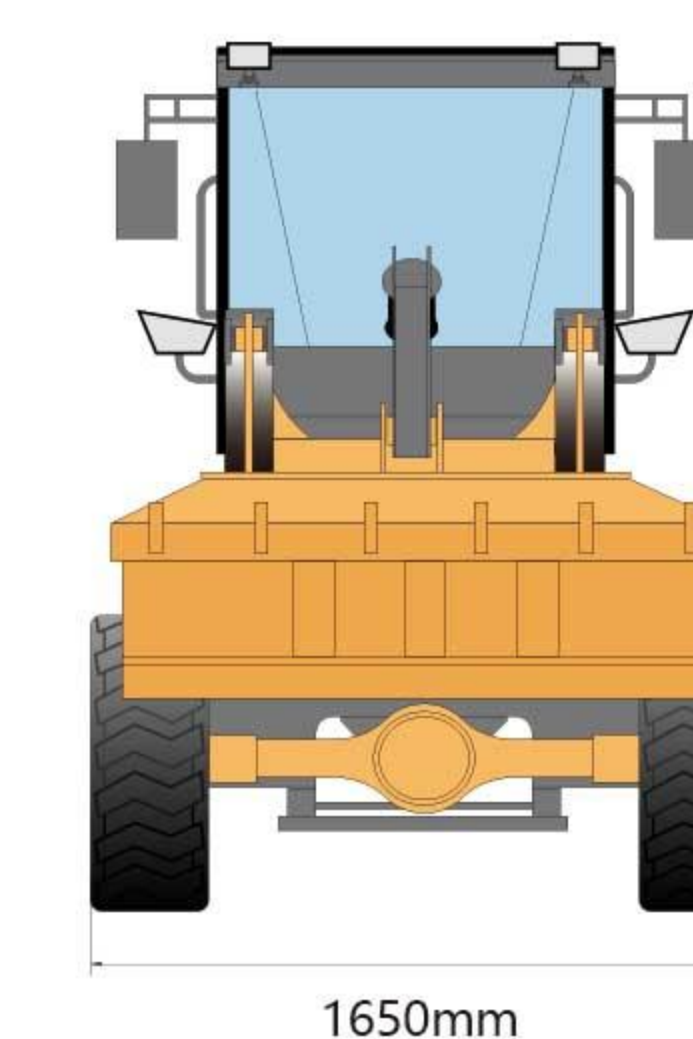
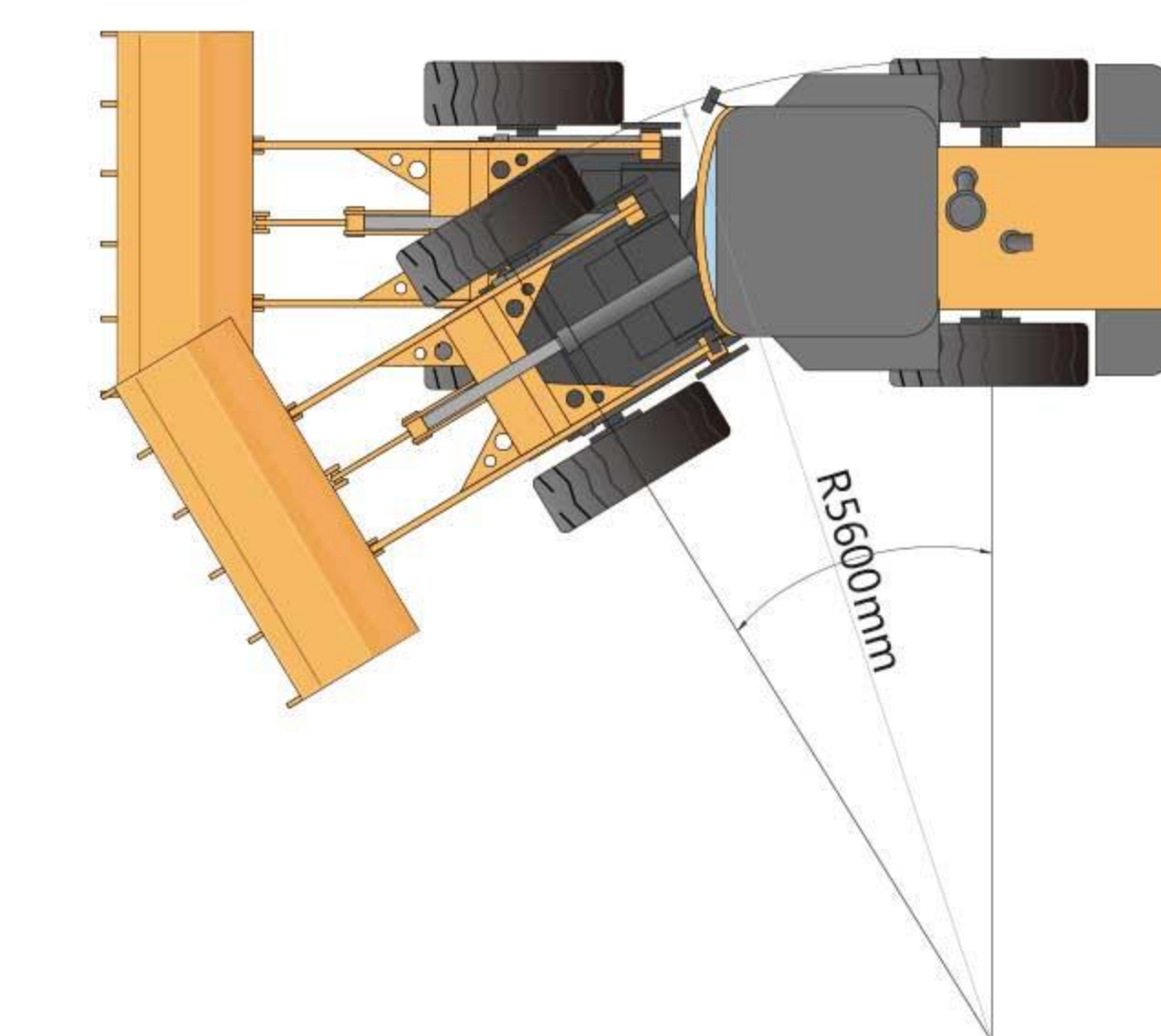
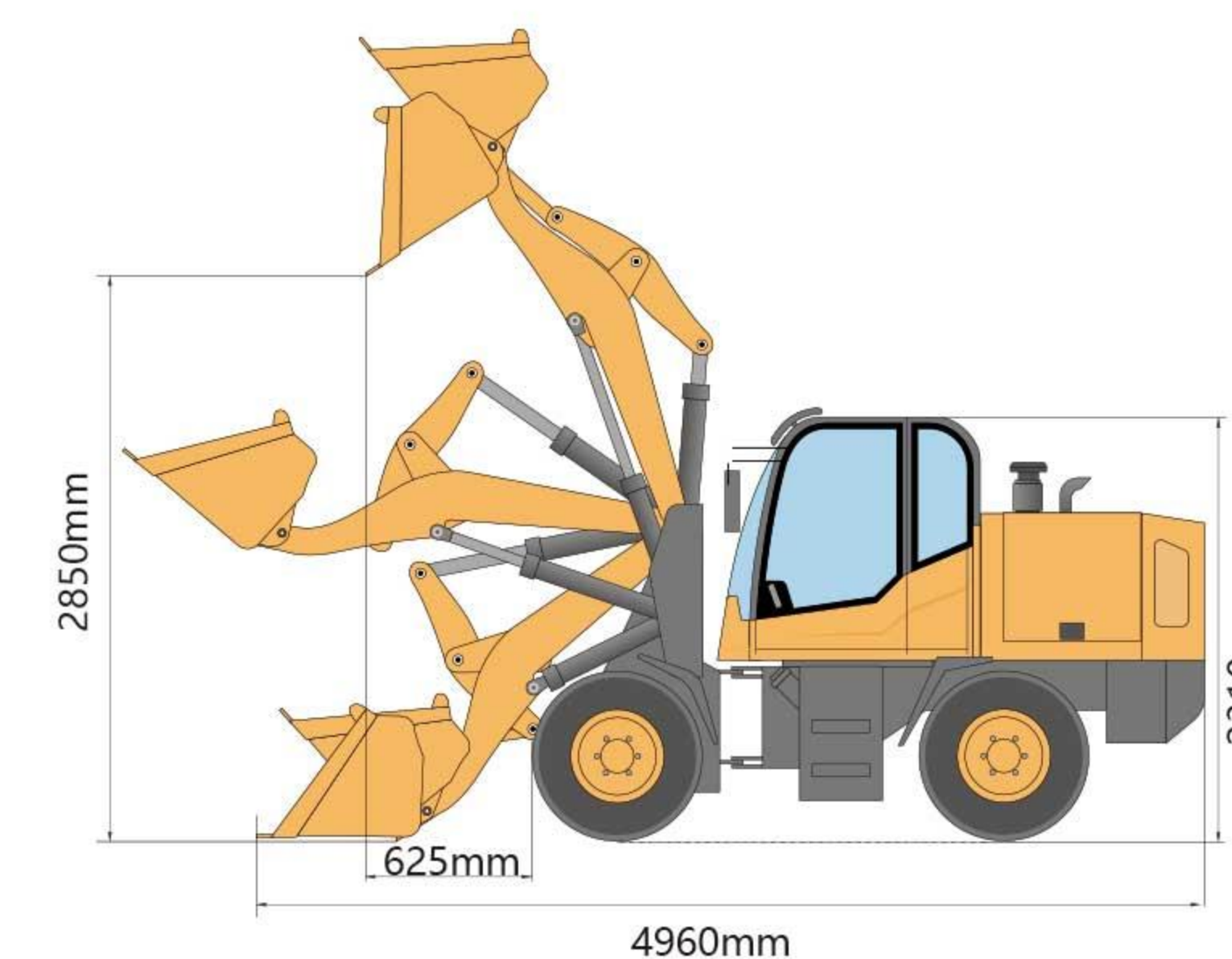


## 整车参数 Vehicle parameters

额定载重 (kg) Rated load (kg)	1000
倾翻载荷 (kg) Tipping load (kg)	1460
铲斗容量(m <sup>3</sup> ) Bucket capacity (m <sup>3</sup> )	0.5
外形尺寸 (mm) Dimensions (mm)	4960×1650×2310
整机重量 (kg) Working mass of the whole machine (kg)	2700
配重总质量 (kg) Total mass of counterweight (kg)	300
卸载高度 (mm) Unloading height (mm)	2850
卸载距离 (mm) Unloading distance (mm)	625
卸载角 (°) Unloading angle (°)	24
铲斗在地面最大翻转角(°) Maximum tilting angle of bucket on the ground (°)	52
转弯半径 (轮胎中心) (mm) Turning radius (tire center) (mm)	5600
通过半径 (铲斗外侧) (mm) Passing radius (outside of bucket) (mm)	6045
铰接中心到后轮中心距 (mm) Distance from articulation center to rear wheel center	1370
后悬距离 (mm) Rear overhang distance (mm)	930
轮胎 Tire	1000-16

## 传动系统 Drivetrain

变速箱 Transmission	金利特 Jinlit
变速箱档位 Transmission gear	四进四退 Four advances and four retreats
行驶速度 (前进低速挡) (km/h) Driving speed (forward low gear) (km/h)	20.86
最大行驶速度 (前进高速挡) (km/h) Maximum driving speed (forward high gear) (km/h)	27.57



## 发动机 Engine

发动机品牌 Engine brand	华东/云内490 Huadong/Yunnei 490
发动机型式 Engine type	4缸、90缸径 4 cylinders, 90 cylinder diameter
发动机额定功率 (KW) Engine rated power (KW)	36.8/40/42
发动机额定转速 (r/min) Engine rated speed (r/min)	2400

## 驱动桥 Drive axle

驱动桥形式 Drive axle type	常四轮驱动 Four-wheel drive
驱动桥 Drive axle	窄50桥/50桥汽/小轮边 Narrow 50mm axle/50mm axle car/small wheel edge
刹车方式 Brake method	油刹/汽刹 Oil brake/gas brake
轴距 (mm) Wheelbase (mm)	2090
轮距 (mm) Track (mm)	1260
最小离地间隙 (mm) Minimum ground clearance (mm)	270

## 液压系统 Hydraulic system

动臂提升时间 (s) Boom lifting time (s)	3.22
铲斗下降时间 (s) Bucket lowering time (s)	2.59
铲斗卸料时间 (s) Bucket unloading time (s)	0.9
三项和(s) Three items and(s)	6.71

# ZL926G轮式装载机

0.8m<sup>3</sup> 1500kg



## 整车参数 Vehicle parameters

额定载重 (kg) Rated load (kg)	1500
倾翻载荷 (kg) Tipping load (kg)	2250
铲斗容量(m <sup>3</sup> ) Bucket capacity (m <sup>3</sup> )	0.8
外形尺寸 (mm) Dimensions (mm)	7350×2050×2780
整机重量 (kg) Working mass of the whole machine (kg)	5130
卸载高度 (mm) Unloading height (mm)	4270
卸载距离 (mm) Unloading distance (mm)	1084
卸载角 (°) Unloading angle (°)	21
铲斗在地面最大翻转角(°) Maximum tilting angle of bucket on the ground (°)	46.5
转弯半径 (轮胎中心) (mm) Turning radius (tire center) (mm)	5650
通过半径 (铲斗外侧) (mm) Passing radius (outside of bucket) (mm)	6700
铰接中心到后轮中心距 (mm) Distance from articulation center to rear wheel center	1500
后悬距离 (mm) Rear overhang distance (mm)	1430
轮胎 Tire	20.5-16

## 传动系统 Drivetrain

变速箱 Transmission	金利特 Jinlit
变速箱档位 Transmission gear	四进四退 Four advances and four retreats
行驶速度 (前进低速挡) (km/h) Driving speed (forward low gear) (km/h)	8.94
最大行驶速度 (前进高速挡) (km/h) Maximum driving speed (forward high gear) (km/h)	23.81

## 发动机 Engine

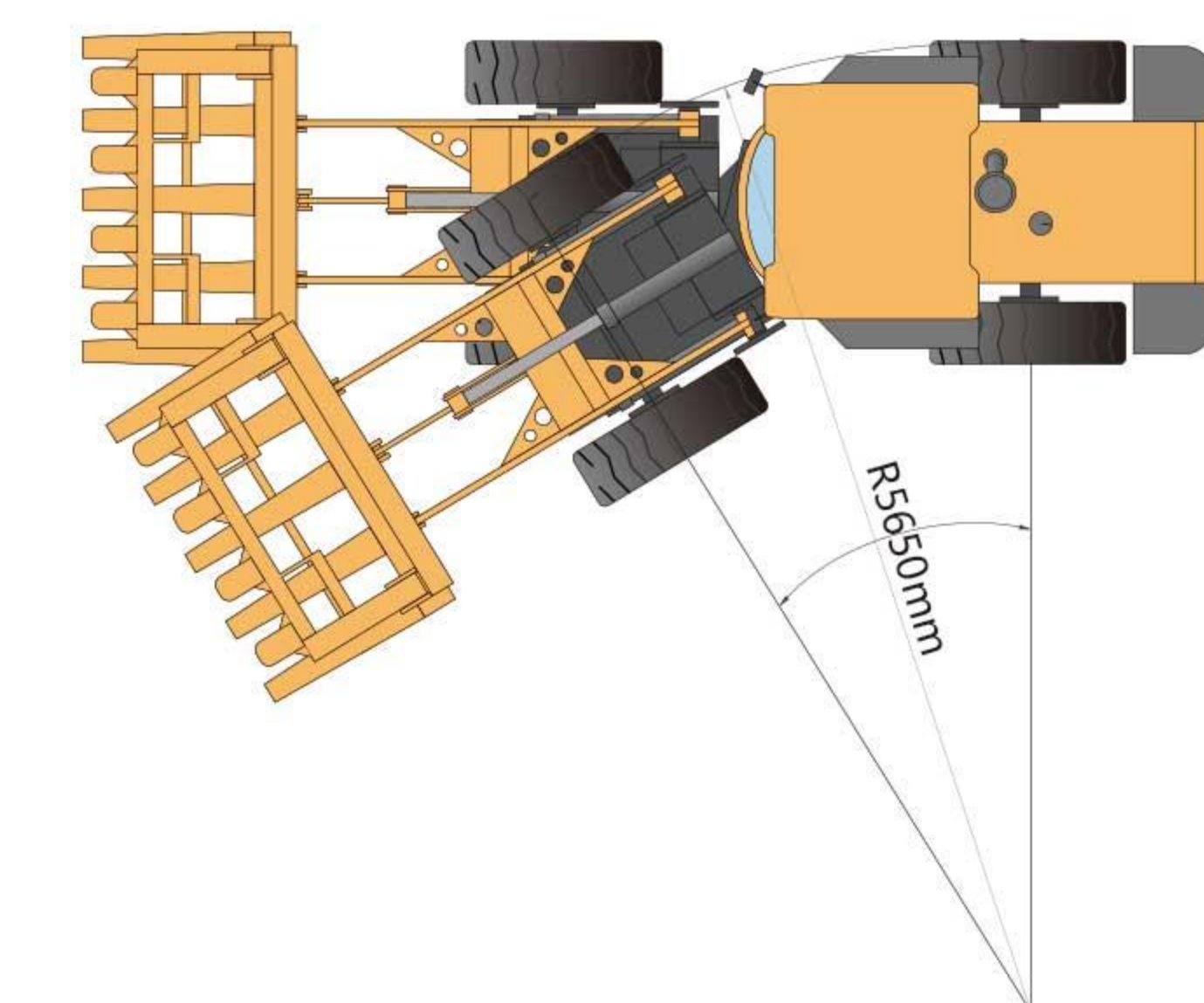
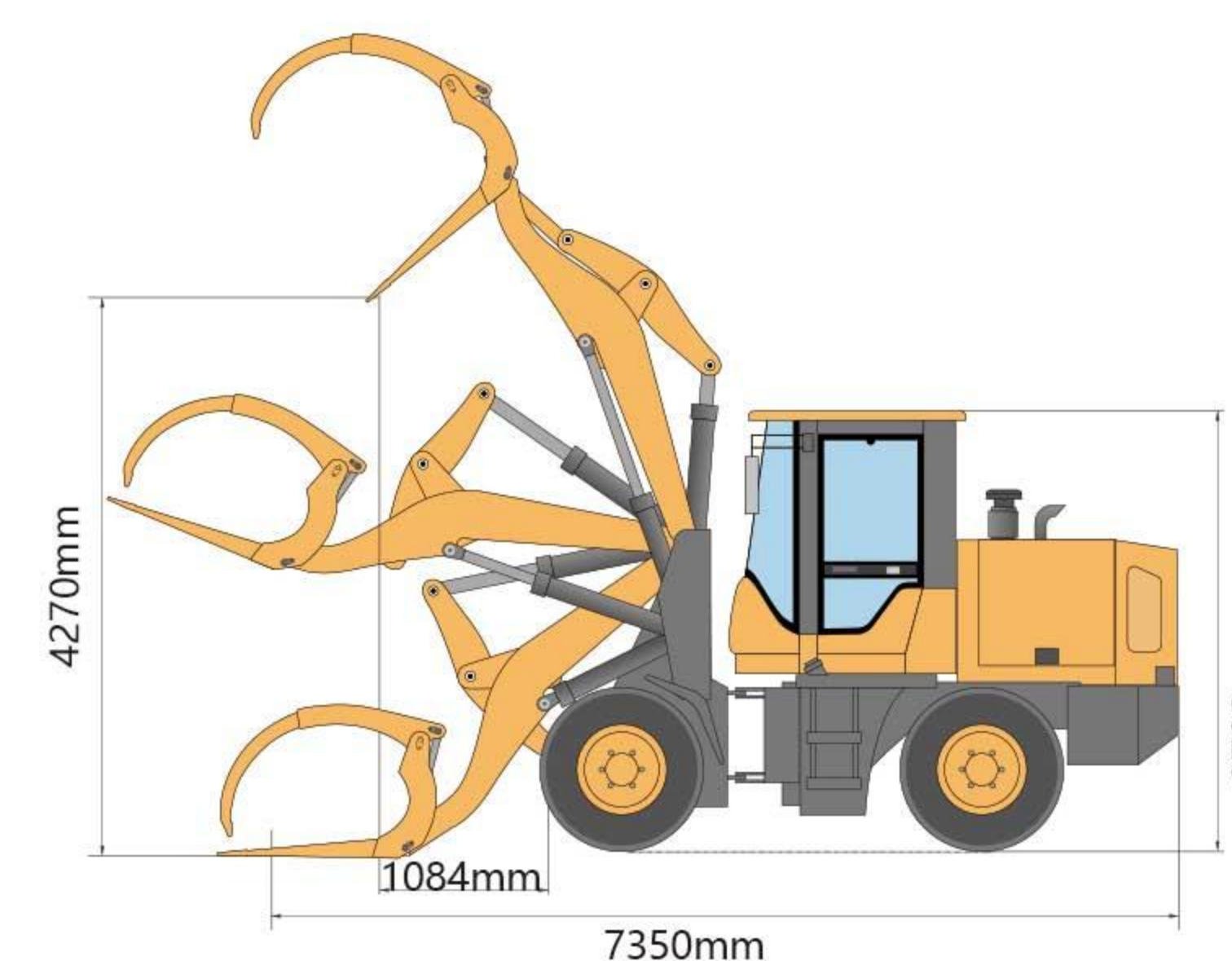
发动机品牌 Engine brand	云内490增压/华东4102增压 Yunnei 490 turbocharged/Huadong 4102 turbocharged
发动机型式 Engine type	4缸、90缸径/120缸径 4 cylinders, 90 cylinder diameter/120 cylinder diameter
发动机额定功率 (KW) Engine rated power (KW)	58/76
发动机额定转速 (r/min) Engine rated speed (r/min)	2400

## 驱动桥 Drive axle

驱动桥形式 Drive axle type	常四轮驱动 Four-wheel drive
驱动桥 Drive axle	小轮边 Small wheel edge
刹车方式 Brake method	汽刹 Steam brake
轴距 (mm) Wheelbase (mm)	2567
轮距 (mm) Track (mm)	1487
最小离地间隙 (mm) Minimum ground clearance (mm)	220

## 液压系统 Hydraulic system

动臂提升时间 (s) Boom lifting time (s)	6.53
铲斗下降时间 (s) Bucket lowering time (s)	4.66
铲斗卸料时间 (s) Bucket unloading time (s)	0.9
三项和(s) Three items and(s)	12.09



# ZL930F轮式装载机

 **1.0m³ 2000kg**



## 整车参数 Vehicle parameters

额定载重 (kg) Rated load (kg)	2000
倾翻载荷 (kg) Tipping load (kg)	3500
铲斗容量(m³) Bucket capacity (m³)	1.0
外形尺寸 (mm) Dimensions (mm)	6120×2050×2860
整机重量 (kg) Working mass of the whole machine (kg)	5070
卸载高度 (mm) Unloading height (mm)	3480
卸载距离 (mm) Unloading distance (mm)	560
卸载角 (°) Unloading angle (°)	25
铲斗在地面最大翻转角(°) Maximum tilting angle of bucket on the ground (°)	45.5
转弯半径 (轮胎中心) (mm) Turning radius (tire center) (mm)	5600
通过半径 (铲斗外侧) (mm) Passing radius (outside of bucket) (mm)	6150
铰接中心到后轮中心距 (mm) Distance from articulation center to rear wheel center	1450
后悬距离 (mm) Rear overhang distance (mm)	1410
轮胎 Tire	16/70-20

## 传动系统 Drivetrain

变速箱 Transmission	金利特 Jinlit
变速箱档位 Transmission gear	四进四退 Four advances and four retreats
行驶速度 (前进低速挡) (km/h) Driving speed (forward low gear) (km/h)	10.57
最大行驶速度 (前进高速挡) (km/h) Maximum driving speed (forward high gear) (km/h)	27.19

## 发动机 Engine

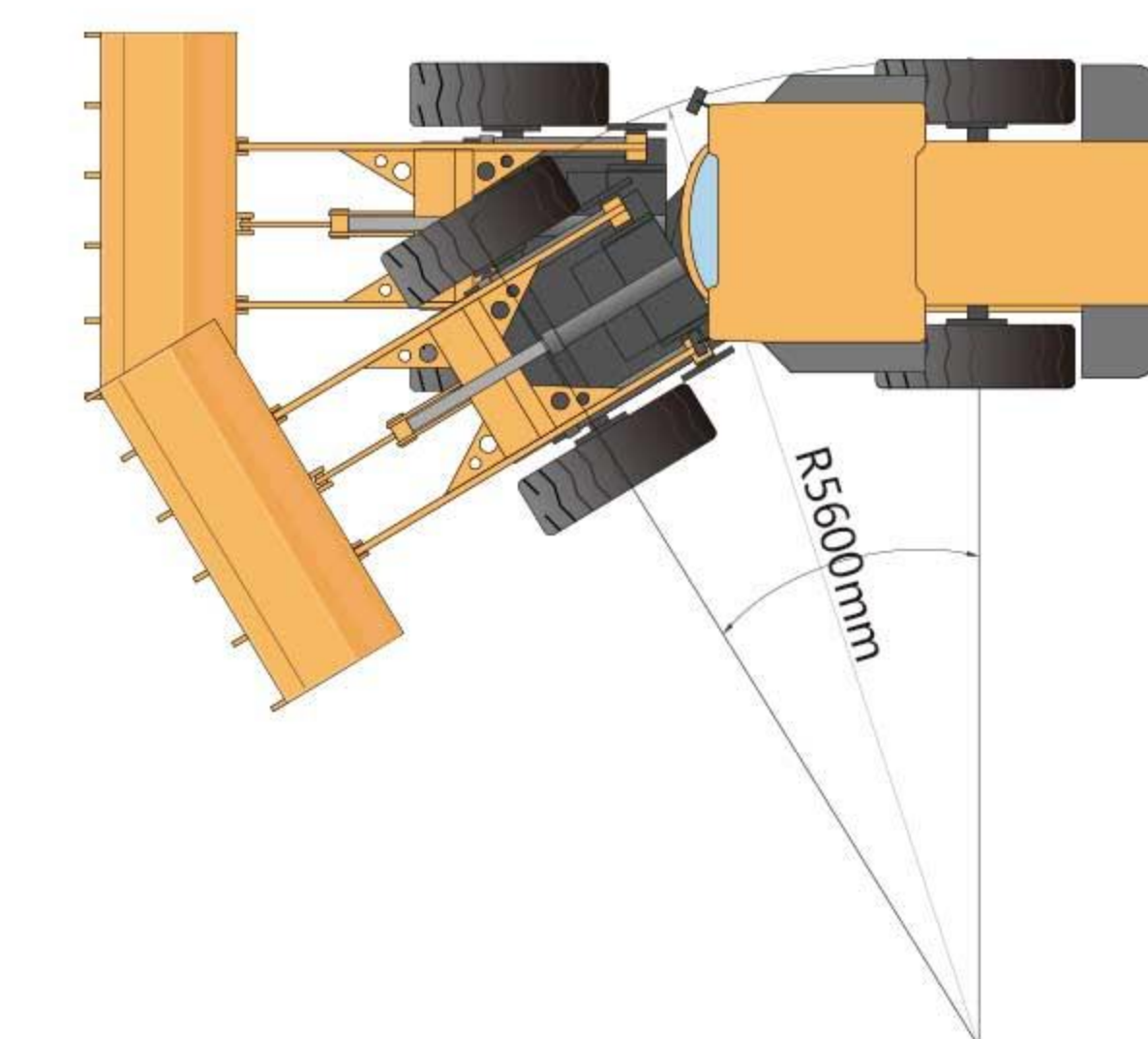
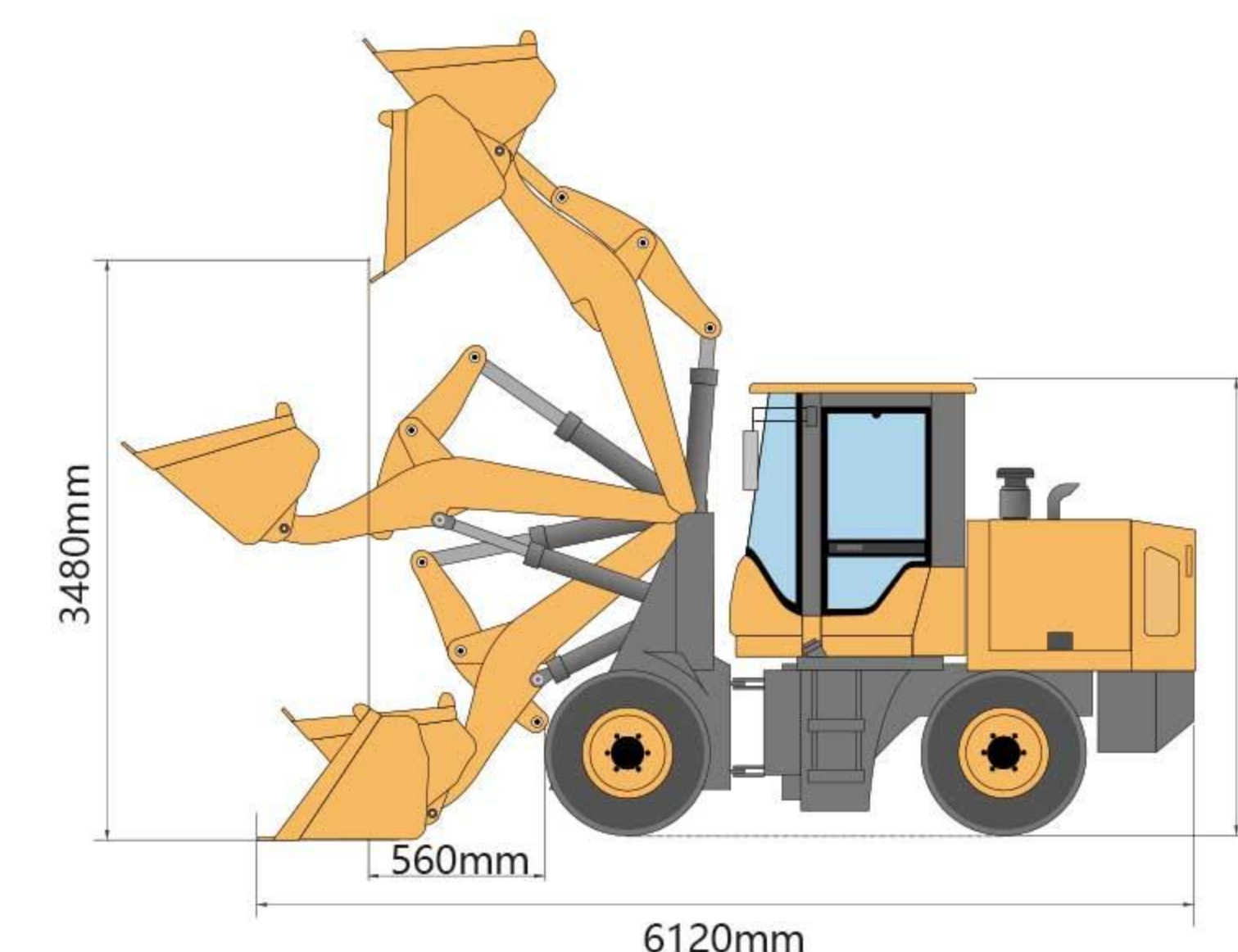
发动机品牌 Engine brand	华东/云内4102增压 Huadong /Yunnei 4102 turbocharged
发动机型式 Engine type	4缸、102缸径 4 cylinders, 102cylinder diameter
发动机额定功率 (KW) Engine rated power (KW)	76
发动机额定转速 (r/min) Engine rated speed (r/min)	2400

## 驱动桥 Drive axle

驱动桥形式 Drive axle type	常四轮驱动 Four-wheel drive
驱动桥 Drive axle	中轮边 Middle wheel edge
刹车方式 Brake method	汽刹 Steam brake
轴距 (mm) Wheelbase (mm)	2457
轮距 (mm) Track (mm)	1546
最小离地间隙 (mm) Minimum ground clearance (mm)	300

## 液压系统 Hydraulic system

动臂提升时间 (s) Boom lifting time (s)	5.75
铲斗下降时间 (s) Bucket lowering time (s)	4.18
铲斗卸料时间 (s) Bucket unloading time (s)	0.71
三项和(s) Three items and(s)	10.64



# ZL820N轮式装载机

 **1.0m<sup>3</sup> 1600kg**



## 整车参数 Vehicle parameters

额定载重 (kg) Rated load (kg)	1600
倾翻载荷 (kg) Tipping load (kg)	3200
铲斗容量(m <sup>3</sup> ) Bucket capacity (m <sup>3</sup> )	1.0
外形尺寸 (mm) Dimensions (mm)	6460×2170×2850
整机重量 (kg) Working mass of the whole machine (kg)	5440
卸载高度 (mm) Unloading height (mm)	3480
卸载距离 (mm) Unloading distance (mm)	830
卸载角 (°) Unloading angle (°)	35
铲斗在地面最大翻转角(°) Maximum tilting angle of bucket on the ground (°)	45
转弯半径 (轮胎中心) (mm) Turning radius (tire center) (mm)	4775
通过半径 (铲斗外侧) (mm) Passing radius (outside of bucket) (mm)	5600
铰接中心到后轮中心距 (mm) Distance from articulation center to rear wheel center	1410
后悬距离 (mm) Rear overhang distance (mm)	1475
轮胎 Tire	16/70-20

## 传动系统 Drivetrain

变速箱 Transmission	280B分体高低速2063 280B split high and low speed 2063
变速箱档位 Transmission gear	四进四退 Four advances and four retreats
行驶速度 (前进低速挡) (km/h) Driving speed (forward low gear) (km/h)	10.66
最大行驶速度 (前进高速挡) (km/h) Maximum driving speed (forward high gear) (km/h)	27.57

## 发动机 Engine

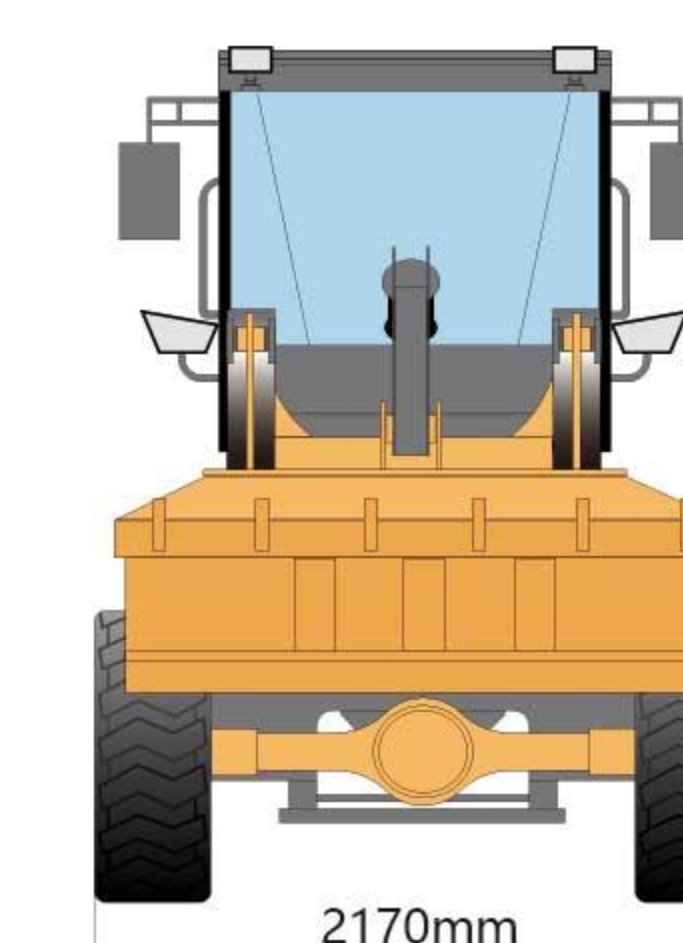
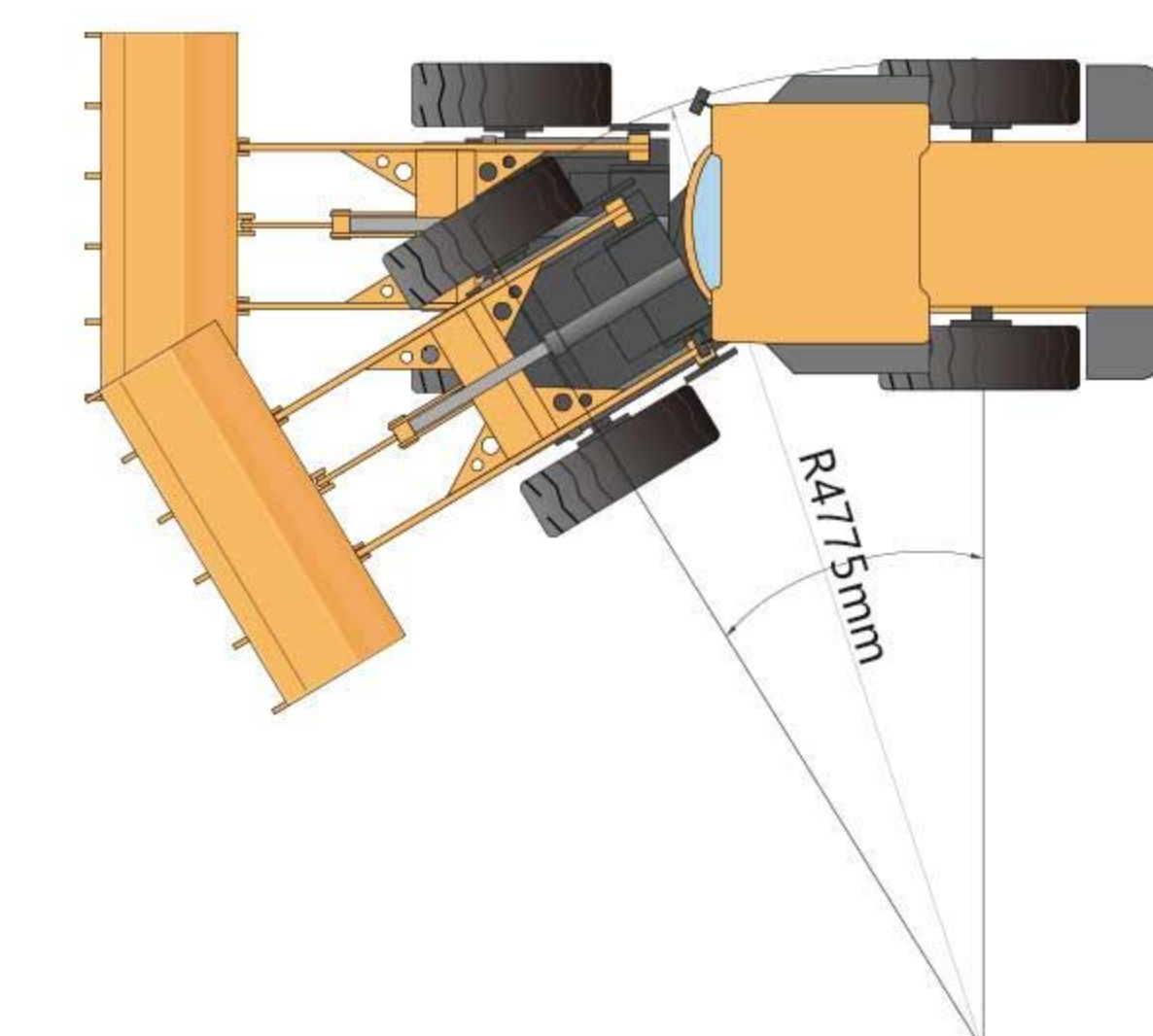
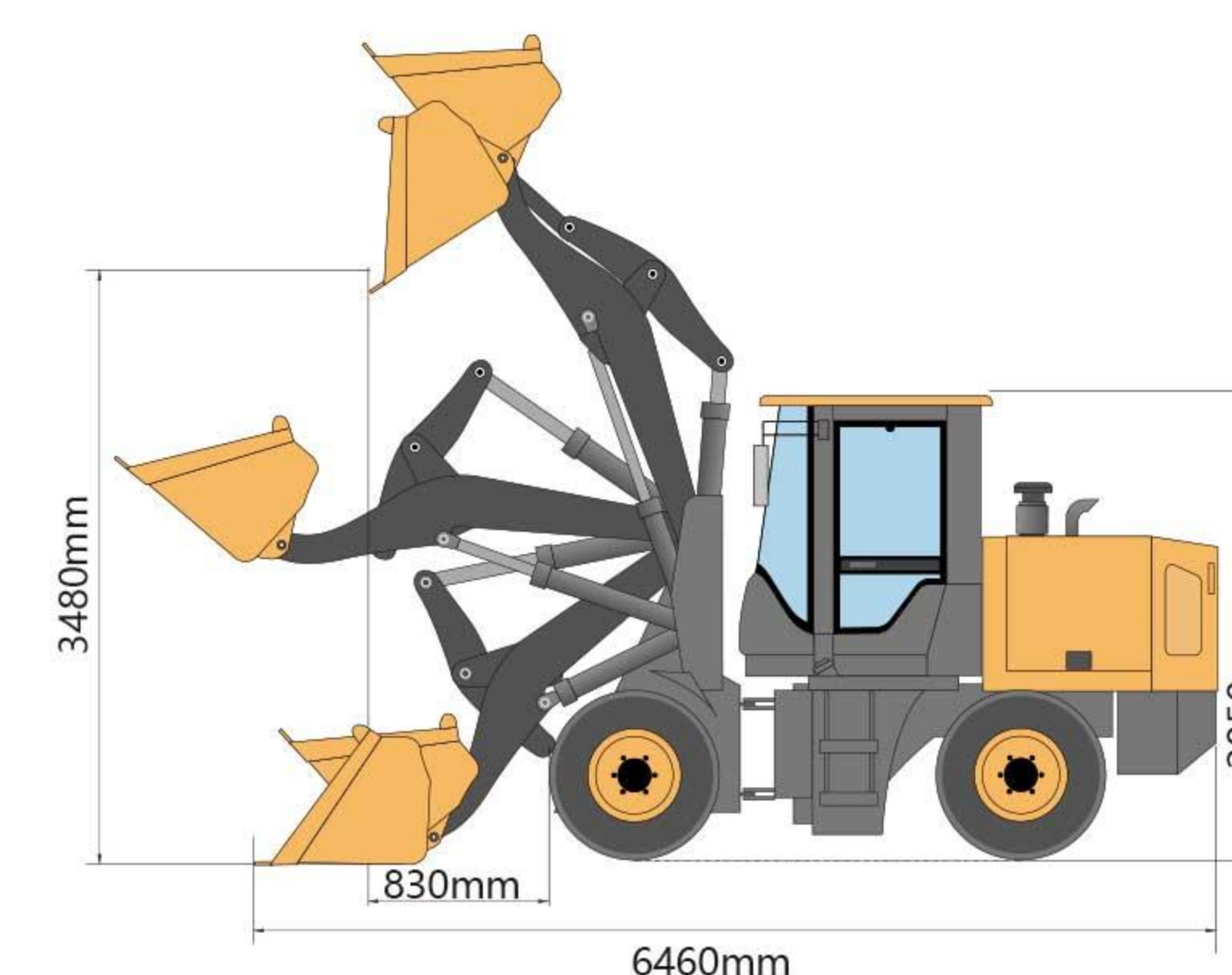
发动机品牌 Engine brand	云内4102增压 Yunnei 4102 turbocharged
发动机型式 Engine type	4缸、102缸径 4 cylinders, 102cylinder diameter
发动机额定功率 (KW) Engine rated power (KW)	77
发动机额定转速 (r/min) Engine rated speed (r/min)	2400

## 驱动桥 Drive axle

驱动桥形式 Drive axle type	常四轮驱动 Four-wheel drive
驱动桥 Drive axle	中轮边 Middle wheel edge
刹车方式 Brake method	汽刹 Steam brake
轴距 (mm) Wheelbase (mm)	2460
轮距 (mm) Track (mm)	1535
最小离地间隙 (mm) Minimum ground clearance (mm)	340

## 液压系统 Hydraulic system

动臂提升时间 (s) Boom lifting time (s)	4.78
铲斗下降时间 (s) Bucket lowering time (s)	3.44
铲斗卸料时间 (s) Bucket unloading time (s)	0.94
三项和(s) Three items and(s)	9.16



# ZL825N轮式装载机

 **1.2m³ 2350kg**



## 整车参数 Vehicle parameters

额定载重 (kg) Rated load (kg)	2350
倾翻载荷 (kg) Tipping load (kg)	4700
铲斗容量(m³) Bucket capacity (m³)	1.2
外形尺寸 (mm) Dimensions (mm)	6760×2170×2920
整机重量 (kg) Working mass of the whole machine (kg)	6210
卸载高度 (mm) Unloading height (mm)	3550
卸载距离 (mm) Unloading distance (mm)	580
卸载角 (°) Unloading angle (°)	34
铲斗在地面最大翻转角(°) Maximum tilting angle of bucket on the ground (°)	46
转弯半径 (轮胎中心) (mm) Turning radius (tire center) (mm)	5250
通过半径 (铲斗外侧) (mm) Passing radius (outside of bucket) (mm)	5900
铰接中心到后轮中心距 (mm) Distance from articulation center to rear wheel center	1460
后悬距离 (mm) Rear overhang distance (mm)	1565
轮胎 Tire	16/70-24

## 传动系统 Drivetrain

变速箱 Transmission	280B分体高低速2063 280B split high and low speed 2063
变速箱档位 Transmission gear	四进四退 Four advances and four retreats
行驶速度 (前进低速挡) (km/h) Driving speed (forward low gear) (km/h)	13.21
最大行驶速度 (前进高速挡) (km/h) Maximum driving speed (forward high gear) (km/h)	27.99

## 发动机 Engine

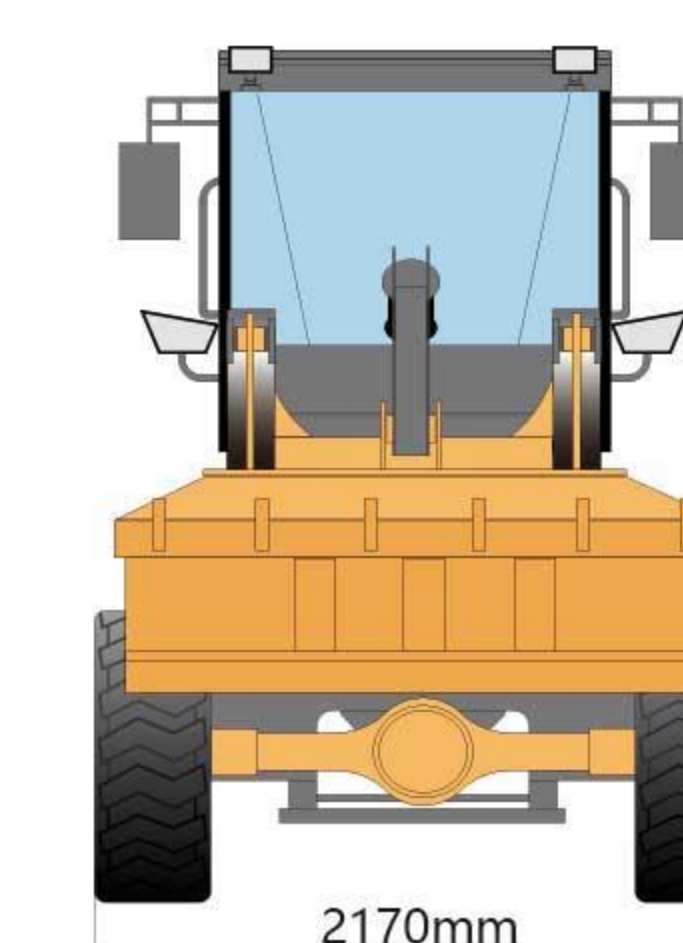
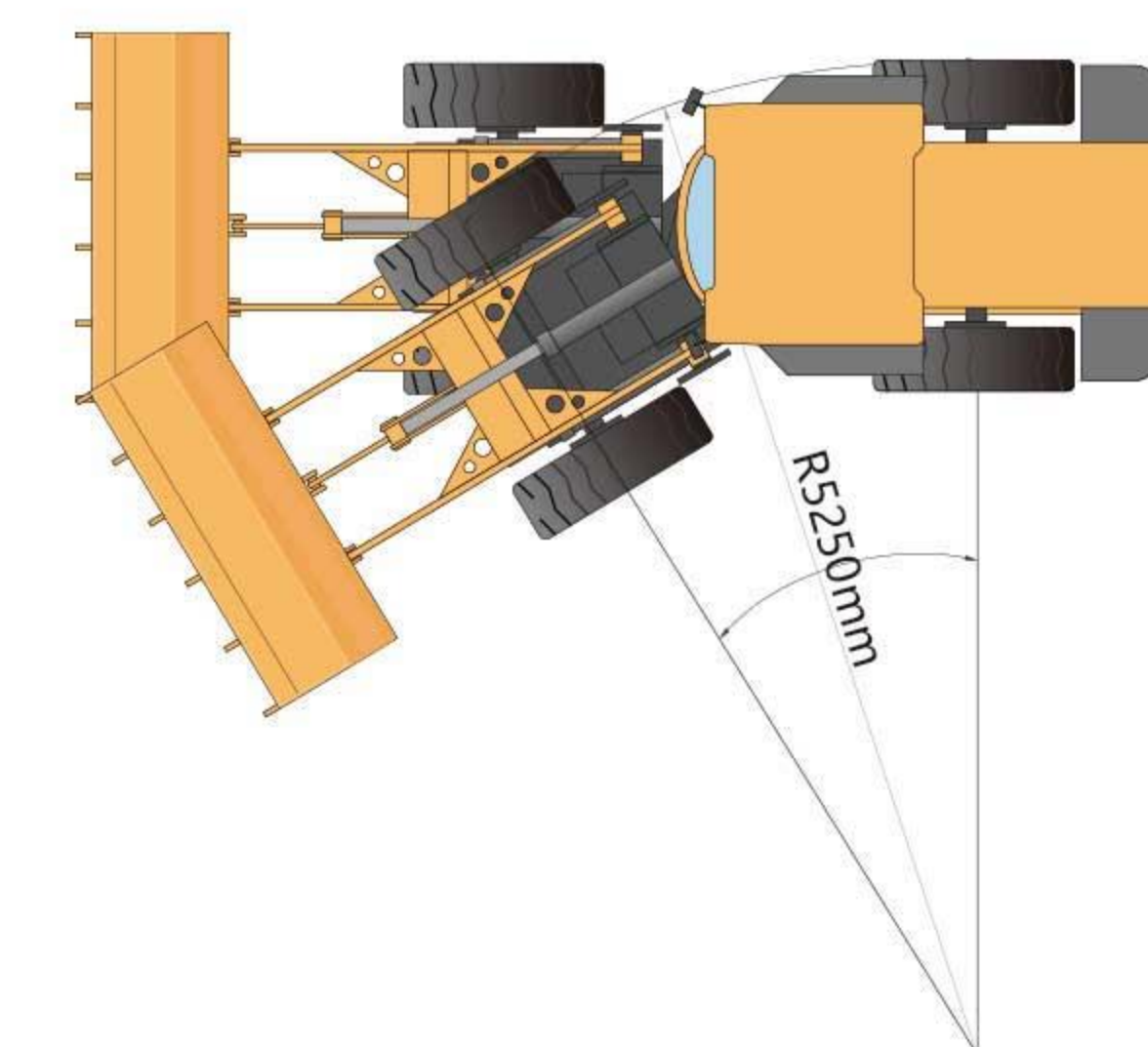
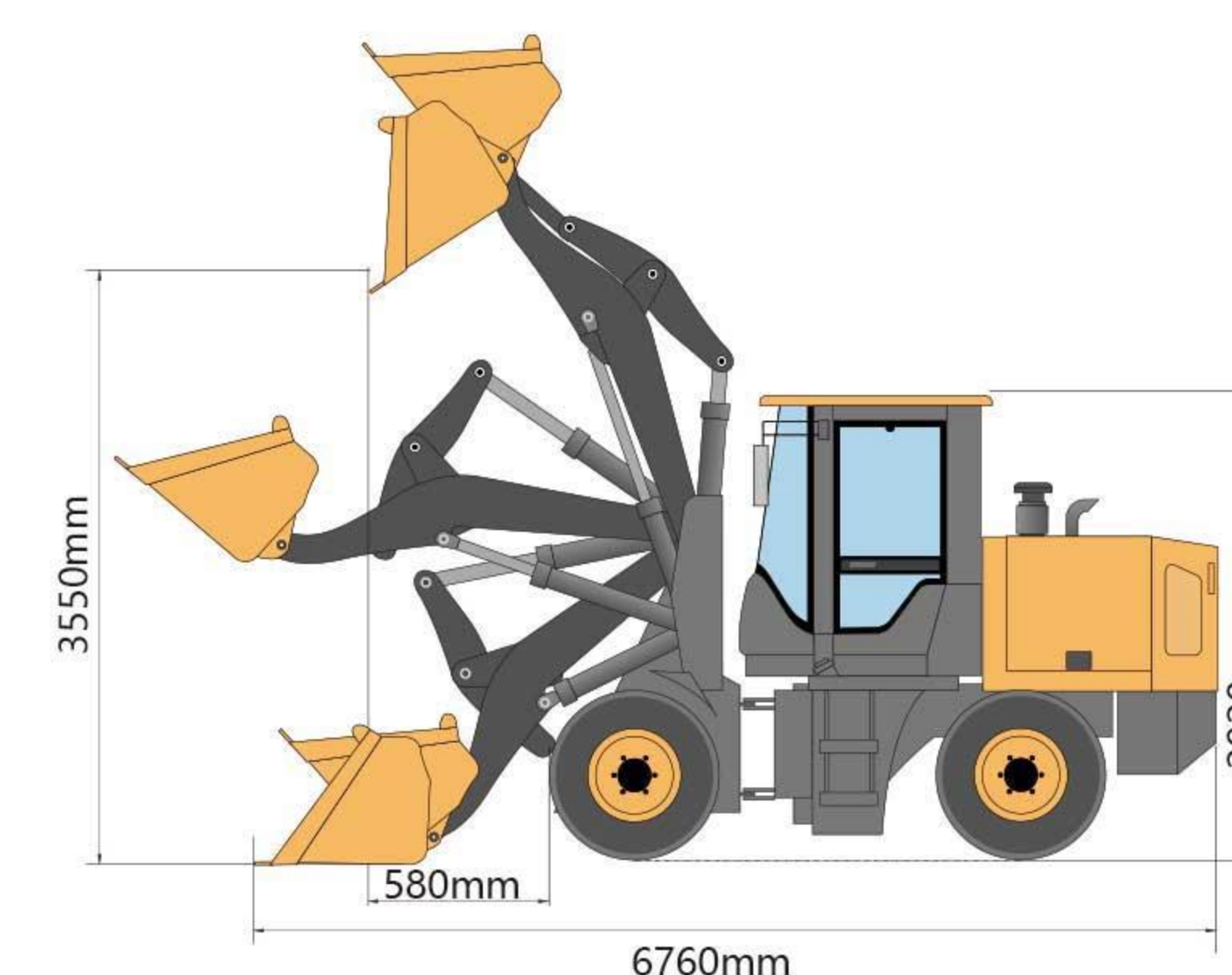
发动机品牌 Engine brand	云内4102增压 Yunnei 4102 turbocharged
发动机型式 Engine type	4缸、105缸径 4 cylinders, 105cylinder diameter
发动机额定功率 (KW) Engine rated power (KW)	88
发动机额定转速 (r/min) Engine rated speed (r/min)	2400

## 驱动桥 Drive axle

驱动桥形式 Drive axle type	常四轮驱动 Four-wheel drive
驱动桥 Drive axle	中大轮边 Middle big wheel edge
刹车方式 Brake method	汽刹 Steam brake
轴距 (mm) Wheelbase (mm)	2680
轮距 (mm) Track (mm)	1695
最小离地间隙 (mm) Minimum ground clearance (mm)	370

## 液压系统 Hydraulic system

动臂提升时间 (s) Boom lifting time (s)	5.66
铲斗下降时间 (s) Bucket lowering time (s)	4.01
铲斗卸料时间 (s) Bucket unloading time (s)	0.81
三项和(s) Three items and(s)	10.48





# ZL830N轮式装载机

 **2.2m<sup>3</sup> 2150kg**

# ZL830N



## 整车参数 Vehicle parameters

额定载重 (kg) Rated load (kg)	2150
倾翻载荷 (kg) Tipping load (kg)	4300
铲斗容量(m <sup>3</sup> ) Bucket capacity (m <sup>3</sup> )	2.2
外形尺寸 (mm) Dimensions (mm)	8270×2480×3130
整机重量 (kg) Working mass of the whole machine (kg)	8900
卸载高度 (mm) Unloading height (mm)	4500
卸载距离 (mm) Unloading distance (mm)	1080
卸载角 (°) Unloading angle (°)	34
铲斗在地面最大翻转角(°) Maximum tilting angle of bucket on the ground (°)	49
转弯半径 (轮胎中心) (mm) Turning radius (tire center) (mm)	5800
通过半径 (铲斗外侧) (mm) Passing radius (outside of bucket) (mm)	7100
铰接中心到后轮中心距 (mm) Distance from articulation center to rear wheel center	1600
后悬距离 (mm) Rear overhang distance (mm)	2030
轮胎 Tire	17.5-25

## 传动系统 Drivetrain

变速箱 Transmission	315分体高低速 315 split high and low speed
变速箱档位 Transmission gear	二进二退 two forward and two backward
行驶速度 (前进低速挡) (km/h) Driving speed (forward low gear) (km/h)	15.65
最大行驶速度 (前进高速挡) (km/h) Maximum driving speed (forward high gear) (km/h)	31.30

## 发动机 Engine

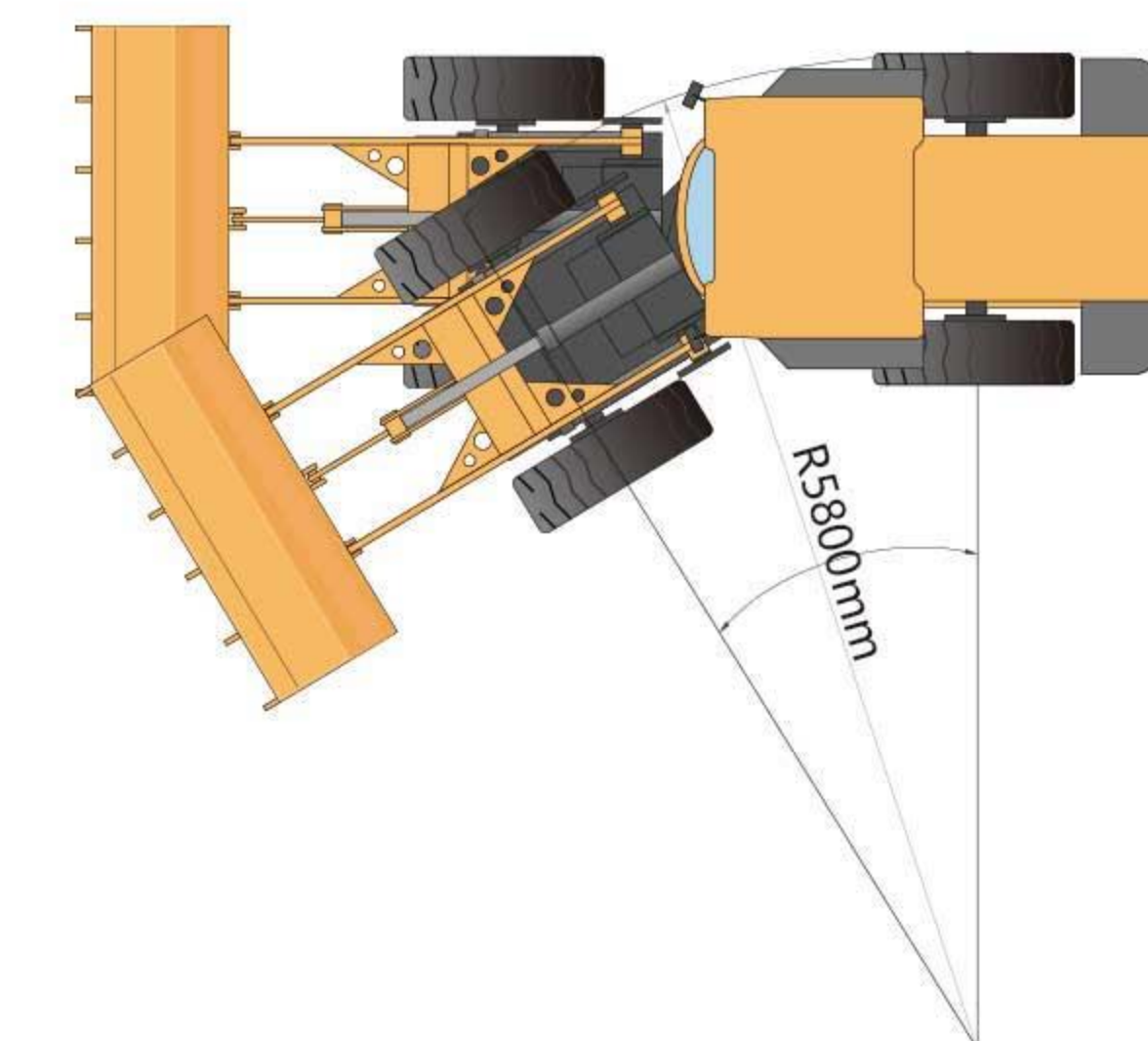
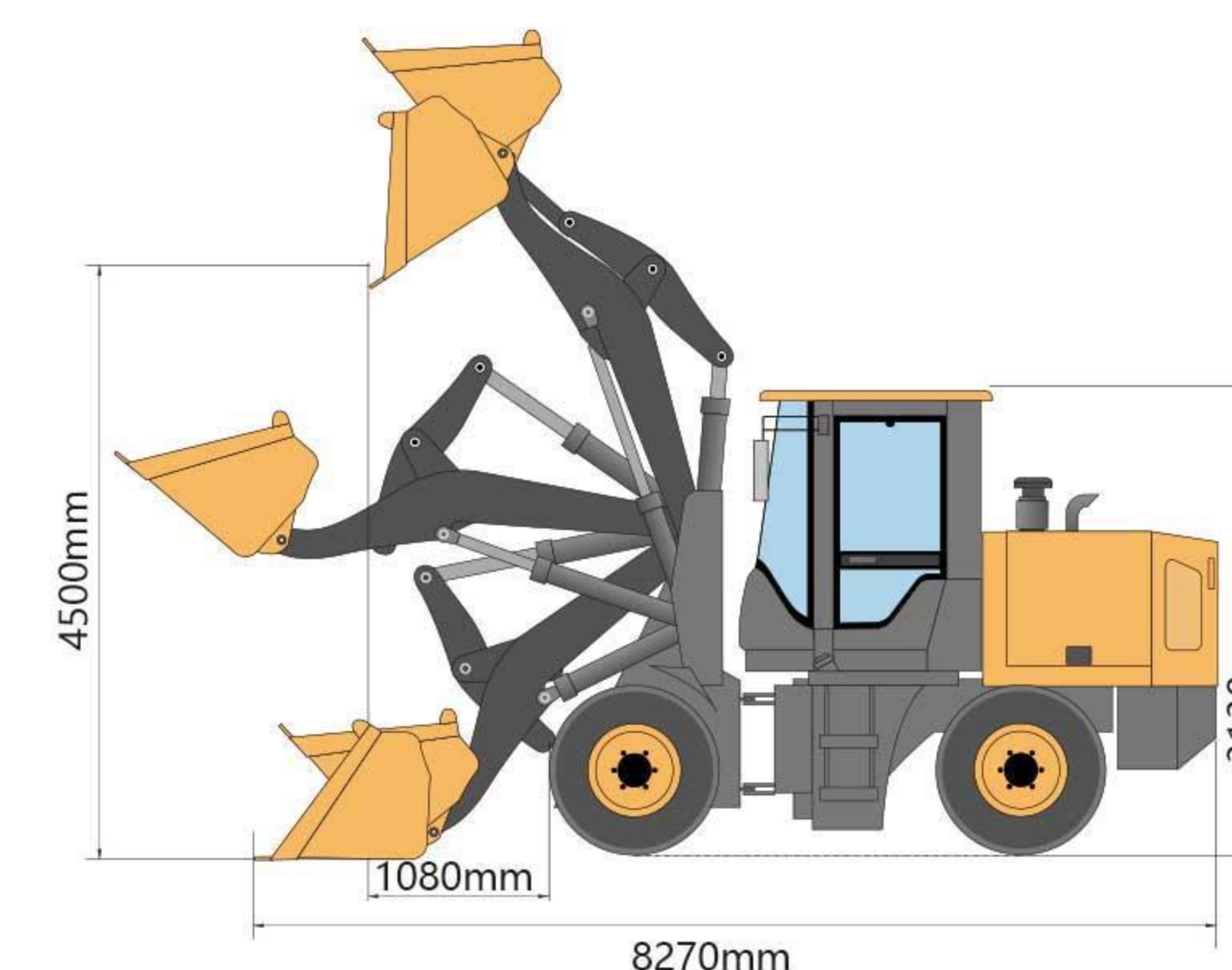
发动机品牌 Engine brand	YITO
发动机型式 Engine type	6缸、105缸径 6 cylinders, 105cylinder diameter
发动机额定功率 (KW) Engine rated power (KW)	103
发动机额定转速 (r/min) Engine rated speed (r/min)	2200

## 驱动桥 Drive axle

驱动桥形式 Drive axle type	常四轮驱动 Four-wheel drive
驱动桥 Drive axle	28桥 28 Bridge
刹车方式 Brake method	汽刹 Steam brake
轴距 (mm) Wheelbase (mm)	2900
轮距 (mm) Track (mm)	1670
最小离地间隙 (mm) Minimum ground clearance (mm)	400

## 液压系统 Hydraulic system

动臂提升时间 (s) Boom lifting time (s)	4.60
铲斗下降时间 (s) Bucket lowering time (s)	3.34
铲斗卸料时间 (s) Bucket unloading time (s)	0.47
三项和(s) Three items and(s)	8.41



# ZL936轮式装载机

 **1.8m<sup>3</sup> 3000kg**



## 整车参数 Vehicle parameters

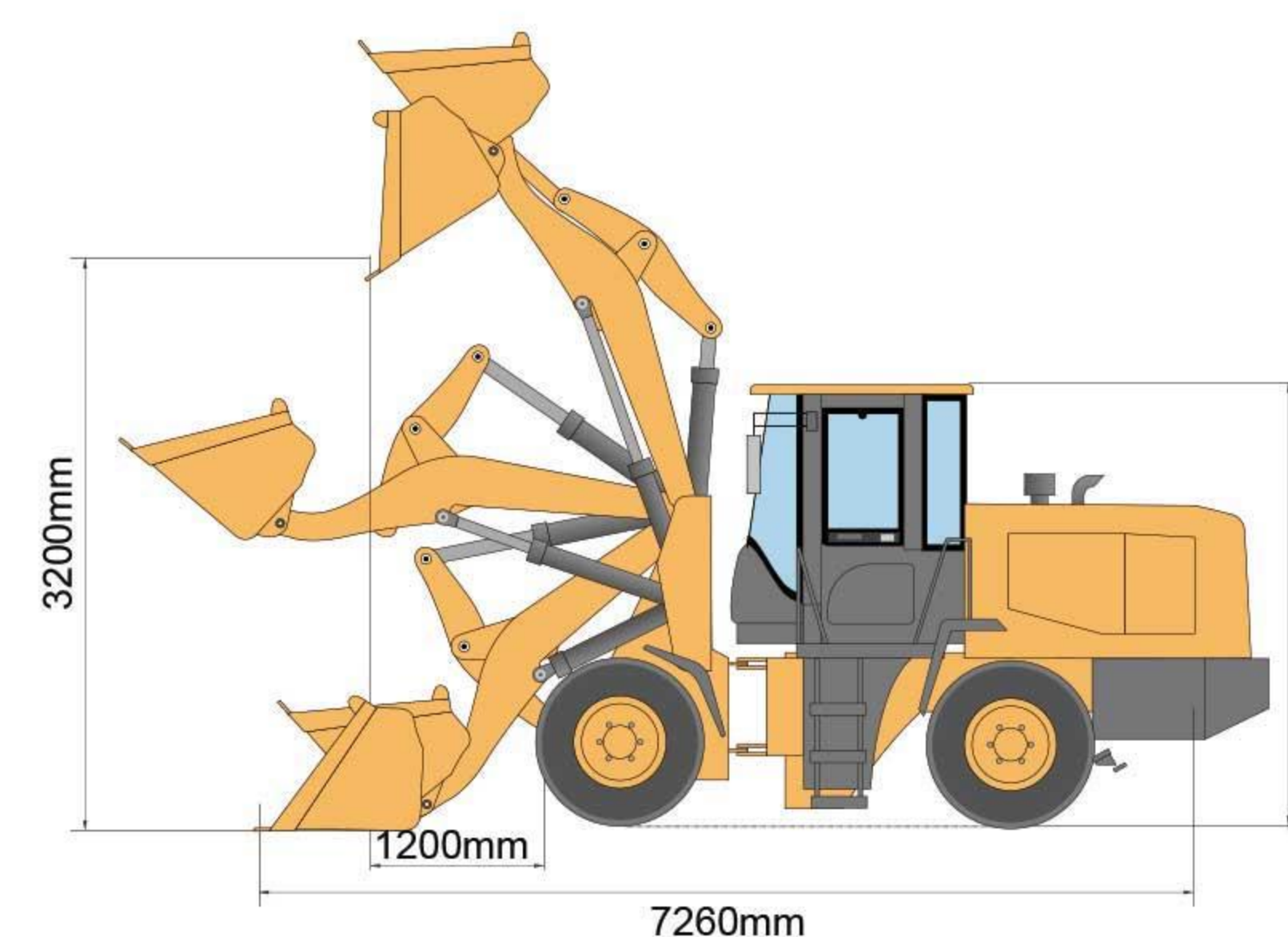
额定载重 (kg) Rated load (kg)	3000
整机重量 (kg) Machine weight (kg)	9800
铲斗容量(m <sup>3</sup> ) Bucket capacity (m <sup>3</sup> )	1.8
外形尺寸 (mm) Overall dimensions (mm)	7260×2440×3330
卸载高度 (mm) Unloading height (mm)	3200
卸载距离 (mm) Unloading distance (mm)	1200
最小转弯半径(mm) Minimum turning radius (mm)	5929
最大牵引力 (KN) Maximum traction (KN)	95
最大崛起力 (KN) Maximum lifting force (KN)	127

## 传动系统 Drivetrain

变矩器型式 Torque converter type	YJ315-X
变速箱型式 Gearbox type	动力换挡 Power Shift
变速箱档位 Gearbox gear	四进二退 Four advances and two retreats
最高车速 (km/h) Maximum vehicle speed (km/h)	40

## 液压系统 Hydraulic system

系统工作压力 (Mpa) System working pressure (Mpa)	16
动臂提升时间 (s) Boom lifting time (s)	4.5
三项和(s) Sum of three items (s)	8.8±0.5



## 发动机 Engine

发动机型号 Engine model	潍柴道依茨 Weichai Deutz
发动机型式 Engine type	直列/水冷/立式/四冲程 In-line/water-cooled/vertical/four-stroke
发动机额定功率 (KW) Engine rated power (KW)	92kw—2200r/min
汽缸数-缸径*行程 Number of cylinders-bore*stroke	6-108*125

## 驱动桥 Drive axle

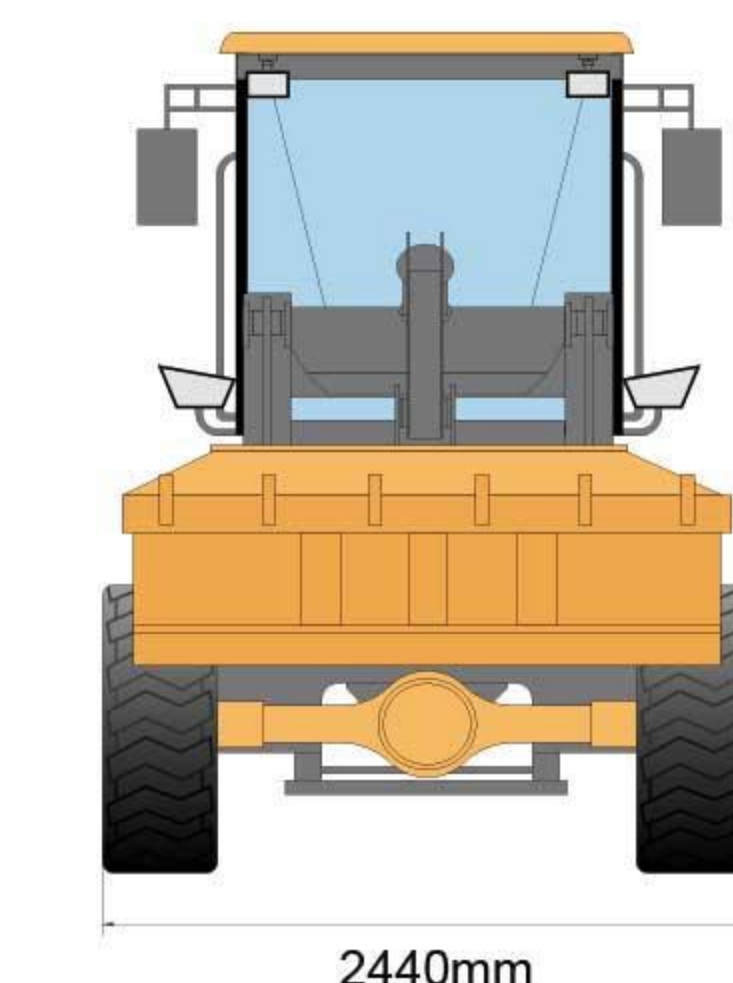
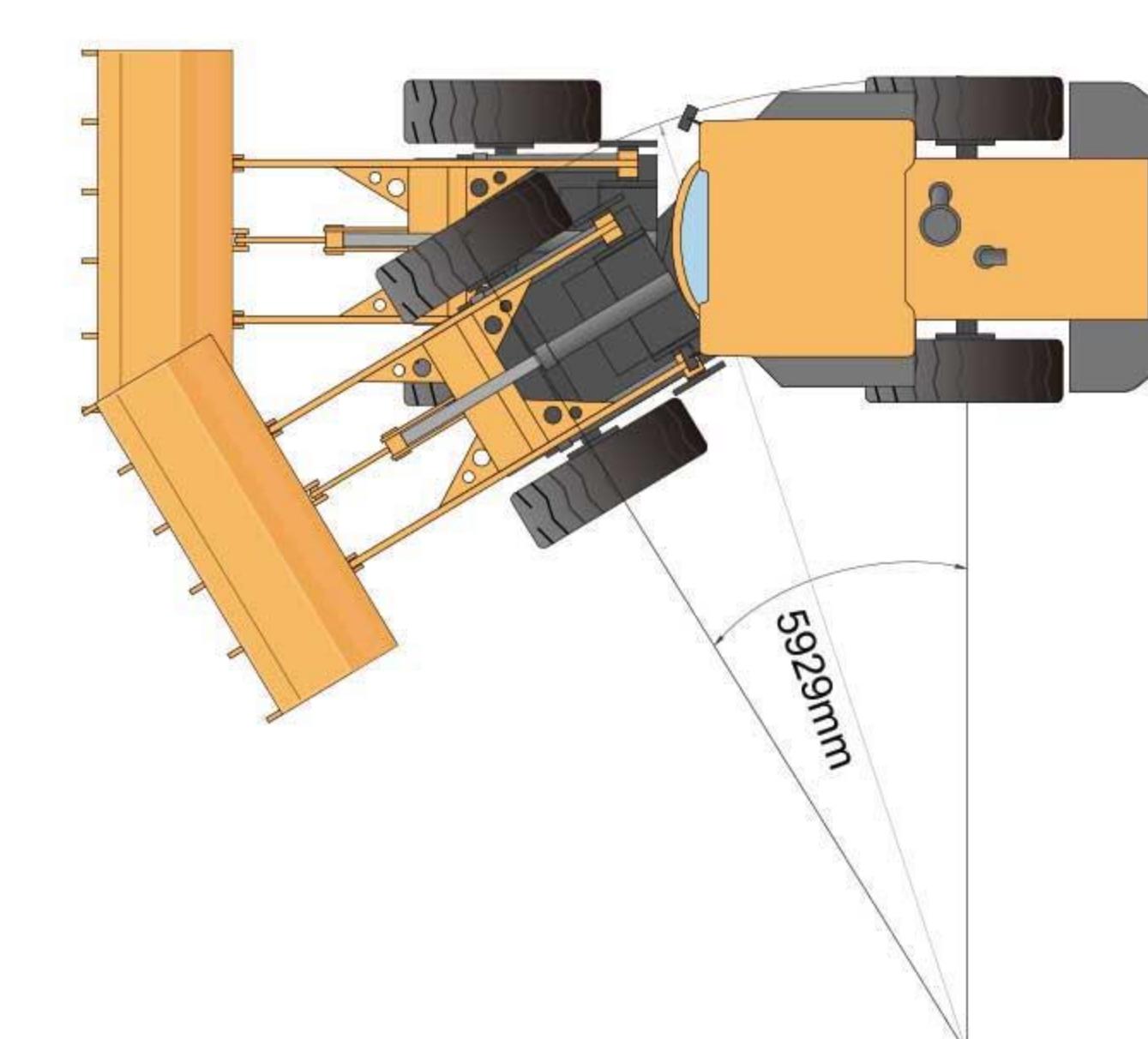
主减速式 Main reduction type	螺旋伞齿轮一级减速 Bevel gear grade 1reduction
轮边减速型式 Wheel side reduction type	一级行星减速 Planetary reduction grade 1
轴距 (mm) Wheelbase (mm)	2750
轮距 (mm) Track (mm)	1500
最小离地间隙 (mm) Minimum ground clearance (mm)	370

## 制动系统 Brake system

行车制动 Service brake	气顶油钳盘式四轮制动 air assist disc brake on 4 wheels
驻车制动 Parking brake	手动嵌盘式 Manual disk brake

## 轮胎 Tyre

规格 Specifications	17.5-25
前轮气压 (Mpa) Front wheel pressure	0.4
后轮气压 (Mpa) Rear wheel pressure	0.35



# ZL956轮式装载机

3.0m<sup>3</sup> 5000kg



## 整车参数 Vehicle parameters

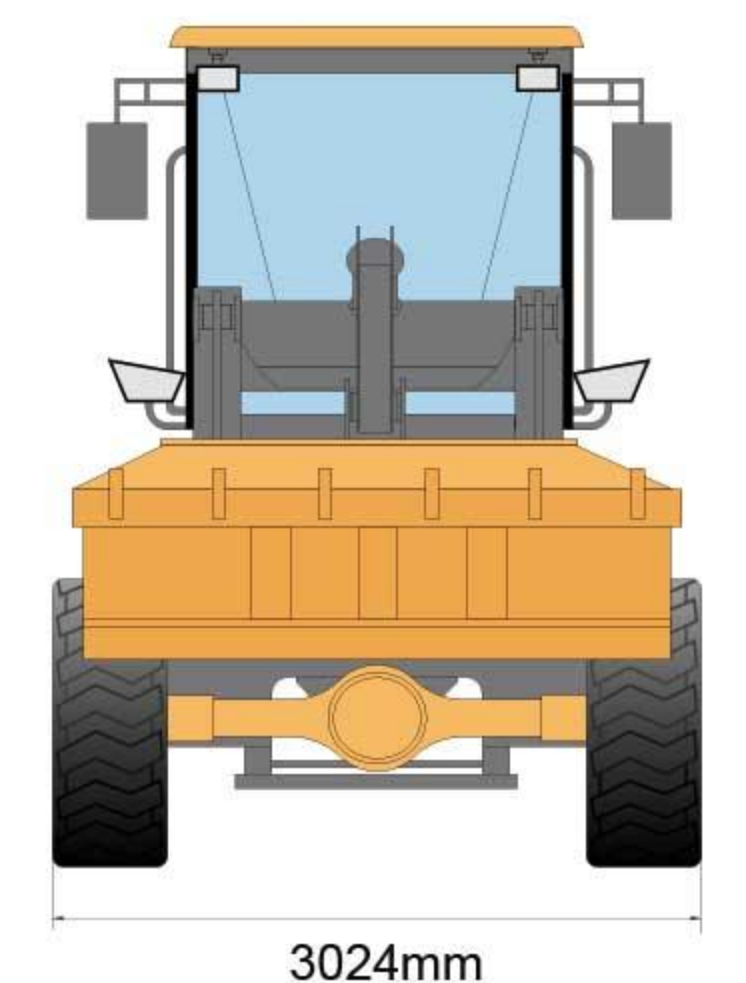
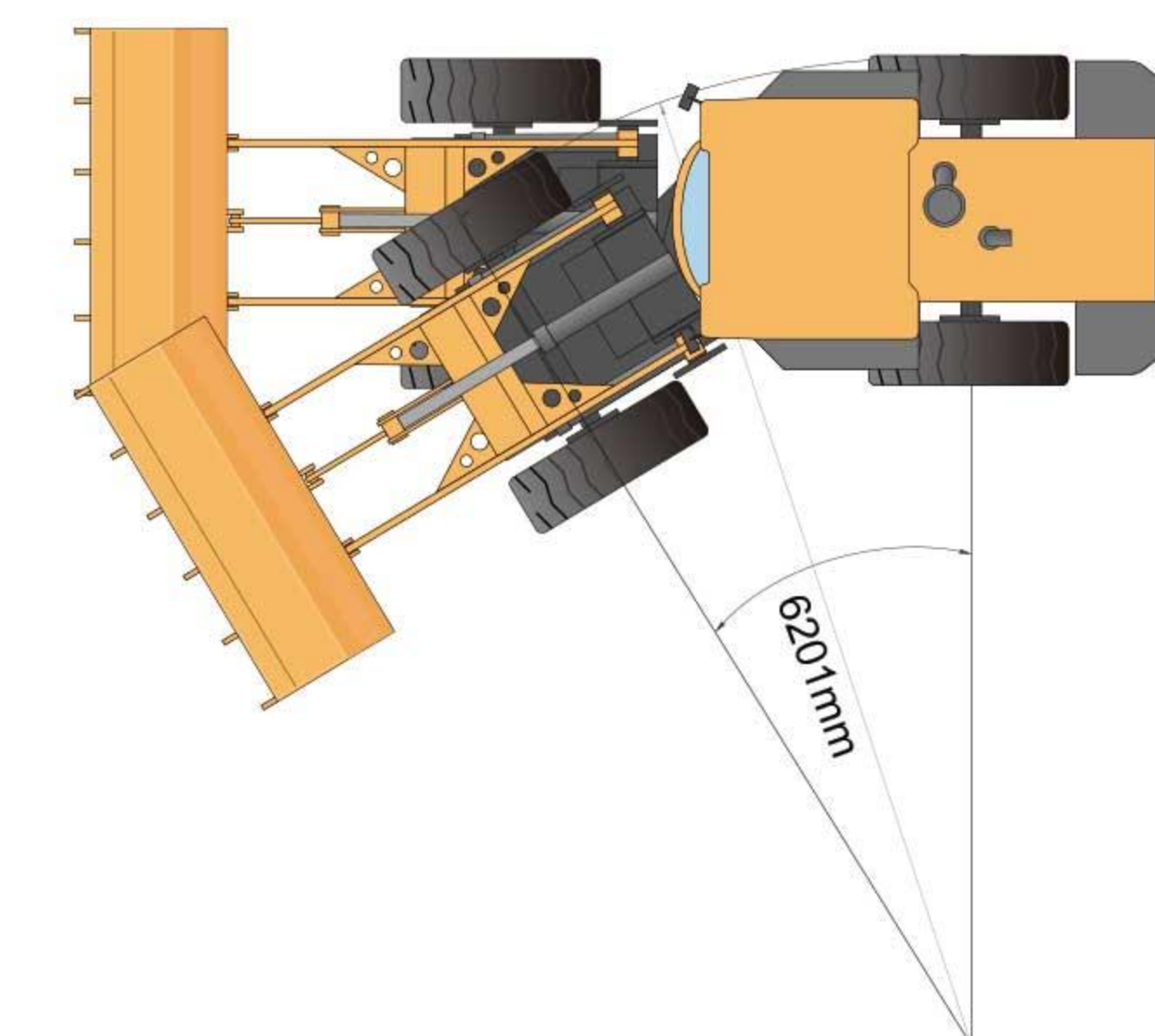
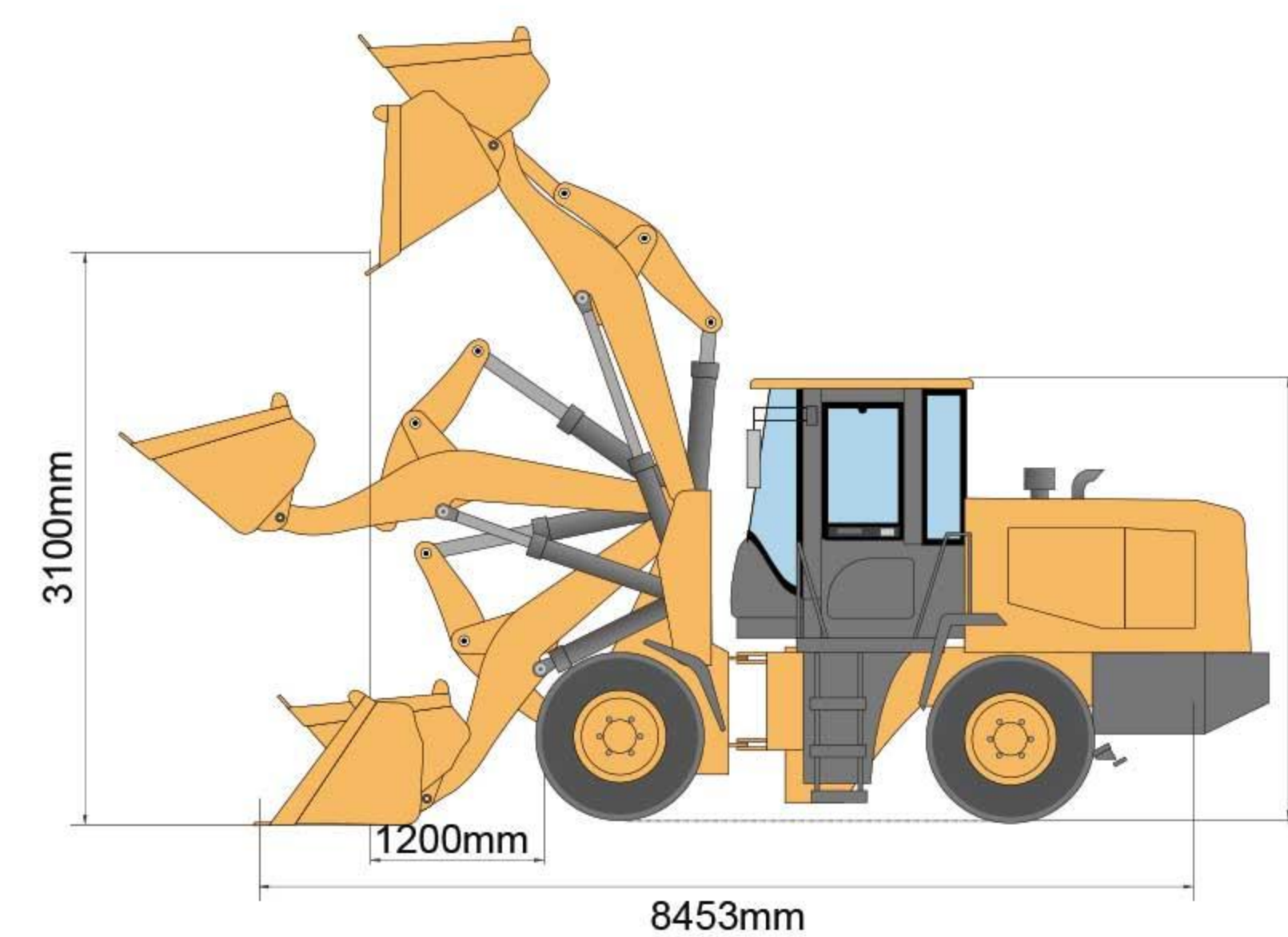
额定载重 (kg) Rated load (kg)	5000
整机重量 (kg) Machine weight (kg)	17200
铲斗容量(m <sup>3</sup> ) Bucket capacity (m <sup>3</sup> )	3.0
外形尺寸 (mm) Overall dimensions (mm)	8453×3024×3385
卸载高度 (mm) Unloading height (mm)	3100
卸载距离 (mm) Unloading distance (mm)	1200
最小转弯半径(mm) Minimum turning radius (mm)	6201
最大牵引力 (KN) Maximum traction (KN)	160
最大崛起力 (KN) Maximum lifting force (KN)	180

## 传动系统 Drivetrain

变矩器型式 Torque converter type	单级四元件双涡轮液力变矩器 Single-stage four-element twin-turbine torque converter
变速箱型式 Gearbox type	行星式动力变速箱 Planetary power transmission
变速箱档位 Gearbox gear	二进一退 Two advances and one retreats
最高车速 (km/h) Maximum vehicle speed (km/h)	38

## 液压系统 Hydraulic system

系统工作压力 (Mpa) System working pressure (Mpa)	18
动臂提升时间 (s) Boom lifting time (s)	5.95±0.2
三项和(s) Sum of three items (s)	10.95±0.5



## 发动机 Engine

发动机型号 Engine model	潍柴WP10G220E22 WeichaiWP10G220E22
发动机型式 Engine type	直列/水冷/干缸套/直喷 Inline water cooling dry cylinder injection
发动机额定功率 (KW) Engine rated power (KW)	162kw—2200r/min
汽缸数-缸径*行程 Number of cylinders-bore*stroke	6-126*130

## 驱动桥 Drive axle

主减速式 Main reduction type	螺旋伞齿轮一级减速 Bevel gear grade 1reduction
轮边减速型式 Wheel side reduction type	一级行星减速 Planetary reduction grade 1
轴距 (mm) Wheelbase (mm)	3200
轮距 (mm) Track (mm)	2250
最小离地间隙 (mm) Minimum ground clearance (mm)	450

## 制动系统 Brake system

行车制动 Service brake	气顶油钳盘式四轮制动 air assist disc brake on 4 wheels
驻车制动 Parking brake	手动嵌盘式 Manual disk brake

## 轮胎 Tyre

规格 Specifications	23.5-25
前轮气压 (Mpa) Front wheel pressure	0.4
后轮气压 (Mpa) Rear wheel pressure	0.35

# ZL968轮式装载机

3.6m<sup>3</sup> 6000kg



## 整车参数 Vehicle parameters

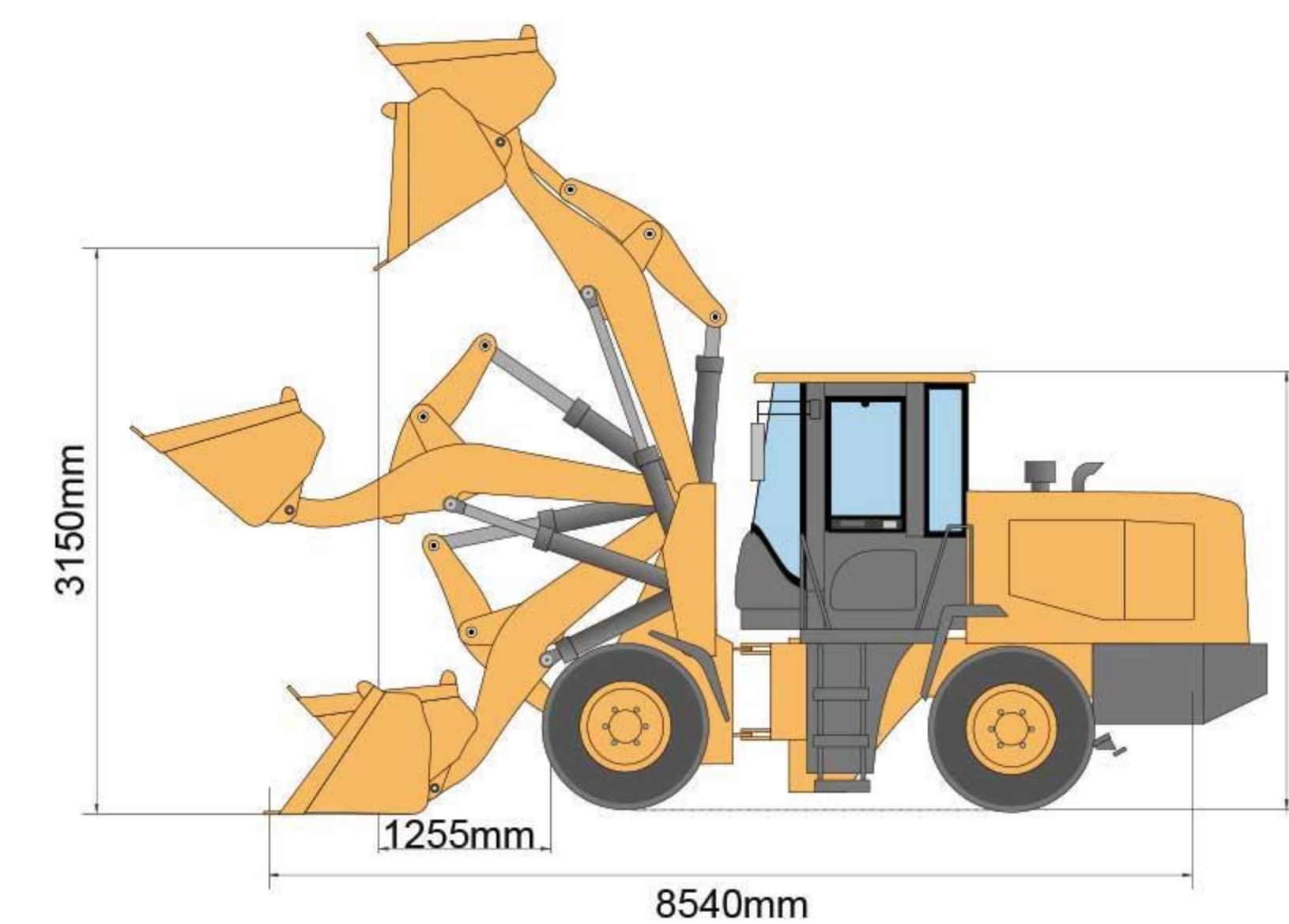
额定载重 (kg) Rated load (kg)	6000
整机重量 (kg) Machine weight (kg)	20000
铲斗容量(m <sup>3</sup> ) Bucket capacity (m <sup>3</sup> )	3.6
外形尺寸 (mm) Overall dimensions (mm)	8540×3100×3550
卸载高度 (mm) Unloading height (mm)	3150
卸载距离 (mm) Unloading distance (mm)	1255
最小转弯半径(mm) Minimum turning radius (mm)	6300
最大牵引力 (KN) Maximum traction (KN)	187
最大崛起力 (KN) Maximum lifting force (KN)	206

## 传动系统 Drivetrain

变矩器型式 Torque converter type	单机三元向心式 Single-machine three-way centripetal type
变速箱型式 Gearbox type	定轴常齿合式动力换挡 Fixed-axis constant-gear power shift
变速箱档位 Gearbox gear	四进四退 Four-forward and four-reverse
最高车速 (km/h) Maximum vehicle speed (km/h)	40

## 液压系统 Hydraulic system

系统工作压力 (Mpa) System working pressure (Mpa)	18
动臂提升时间 (s) Boom lifting time (s)	6.15+0.25
三项和(s) Sum of three items (s)	10.65+0.5



## 发动机 Engine

发动机型号 Engine model	潍柴WD10G240E21 WeichaiWD10G240E21
发动机型式 Engine type	直列/水冷/干缸套/直喷 Inline water cooling dry cylinder injection
发动机额定功率 (KW) Engine rated power (KW)	175kw—2200r/min
汽缸数-缸径*行程 Number of cylinders-bore*stroke	6-126*130

## 驱动桥 Drive axle

主减速式 Main reduction type	螺旋伞齿轮一级减速 Bevel gear grade 1reduction
轮边减速型式 Wheel side reduction type	一级行星减速 Planetary reduction grade 1
轴距 (mm) Wheelbase (mm)	3350
轮距 (mm) Track (mm)	2250
最小离地间隙 (mm) Minimum ground clearance (mm)	450

## 制动系统 Brake system

行车制动 Service brake	气顶油钳盘式四轮制动 air assist disc brake on 4 wheels
驻车制动 Parking brake	手动环毂式制动 Manual parking brake

## 轮胎 Tyre

规格 Specifications	26.5-25
前轮气压 (Mpa) Front wheel pressure	0.4
后轮气压 (Mpa) Rear wheel pressure	0.35

