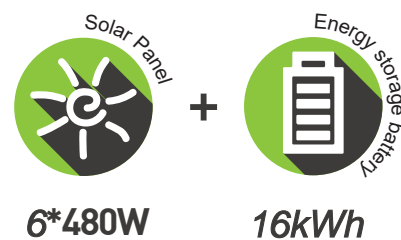
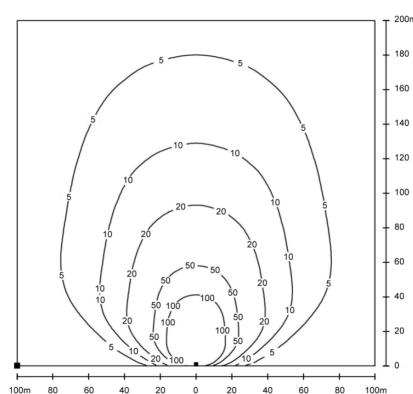


HSL-2880B SOLAR LIGHTING TOWERS



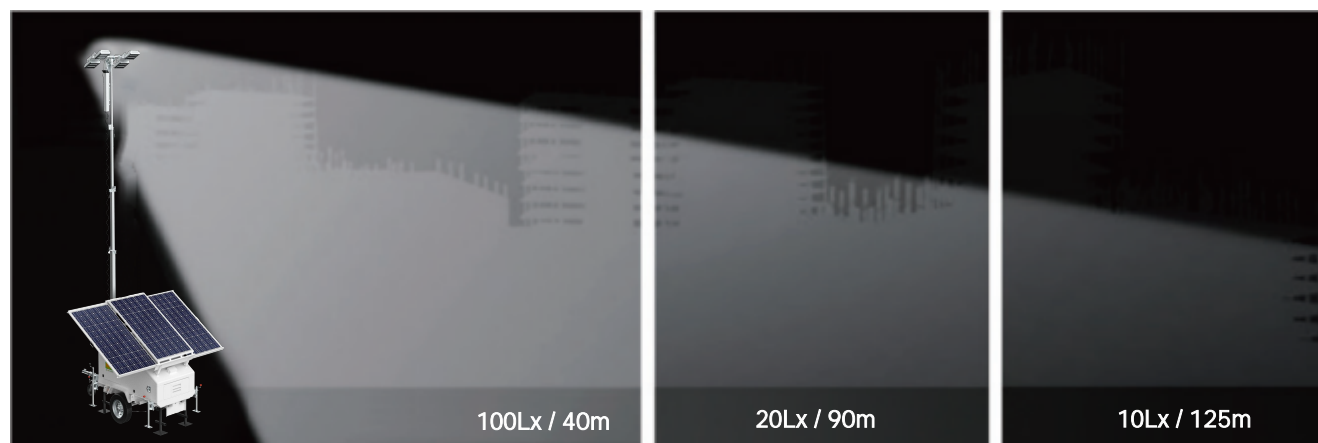
The solar lighting towers take the advantages of solar renewable energy and high efficient LED light systems. Ideal for special events, construction sites, security and any other application where on-demand lighting is desired. This system provides cost-effective bright white LED lighting without all of the disadvantages inherent to diesel lighting systems – high operating costs (diesel fuel, maintenance, labor) as well as carbon emissions, noise, fumes and light pollution.

4*200W-DC48V 9m Isolux curve



✓ Product characteristics

- Easy transport
- Higher power efficiency
- Longer running hours
- Incredible light distribution
- Sturdy and durable
- Max height 9m



www.mpmchybrid.com

Specification

General	
Type	HSL-2880B
System Voltage	48V
Lumen Output	160000 lm
Lights(LED)	4 x 200W, 200lm/W,5000±300K
Coverage	24100 m² at 5 lux, 6170m² at 20lux
Mast	9m Hydraulic
Protection Class	IP54
Working Temperature	-5°C to 50°C
Transport Efficiency	40'HC 4
Loading Dimensions(L*W*H)	2924*2150*2474mm
Expanding Dimensions(L*W*H)	4538*3850*9000mm
Net Weight	1958kg
Battery	
Model	MF51314
Type	LiFePO4
Spec.	314Ah 51.2V 16kWh
Cycle Life	6000
Brightness (4x200W 100%)	20 hours
Solar	
Power	6x480W,2880W
Draw-out Type	Electric
Efficiency	1 hour of sun /3.6 hours of light
Peak Solar Charge Speed	2.88kW/h
Trailer	
Type	Off-road
Braking Mode	Parking hand break + Overrun device
Tyre and Rim Size	14'
Mudguard / Wheel Chock	Included
Maximum Towing Speed	25km/h
Lifting	Vertical
Axle	Single Axle
Rating	2.0 tonne

Option

- ☐ 7.2m Manual
- ☐ 7.2m Electric
- ☐ 7.2m Hydraulic
- ☐ Automatic control system
- ☐ 4G
- ☐ Camera
- ☐ On-road trailer



MPMC POWERTECH CORP.
sales@mpmc-china.com | www.mpmc-china.com

Photographs are for illustrative purposes only and may not reflect final configuration.

Follow us

- <https://www.facebook.com/mpmcgroup>
- <https://www.linkedin.com/company/mpmcpowertech/>
- <https://www.youtube.com/user/MPMCGenerator>

All information in this document is substantially correct at time of printing and may be altered subsequently. Final weight and dimensions will depend on completed specification.