

MODEL : HBD-30

BATTERY ENERGY STORAGE SYSTEM for HYBRID



Design Standards

HBD® -E is a new range of secure integrated Battery Energy storage system. This fixed and modular solution includes batteries, hybrid inverter, HVAC and control system; Fire protection and auxiliary components for option. The E series can be directly connected to PV array, AC generator, Grid power and load. HBD® is mainly developed for no emission and low noise, Reduce the dependence on grid, Improve power supply quality and Ensure the power consumption of emergency load.

Benefits

- Integrated installation, convenient storage and transportation;
- High return on investment and short payback period;
- Simple build your hybrid system just plug and play;

Warranty

Kindly check "WARRANTY MANUAL"

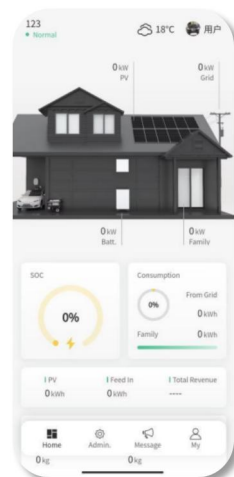


General Information		
Rated Output Power@25℃		30 kVA
Rated Power Factor		0.8 lagging
Rated Output Voltage		380V@50/60Hz,3ph. (400V & 415V available)
Battery Storage Capacity	Min.	64.31 kWh
	Max.	112.54 kWh
External Connection	Input	Diesel generator input≤200A, Grid input≤200A, Solar array MC4≤60kWp
	Output	63A 3P+N+PE Socket
Protection Class		IP54
Loading Dimension(W*D*H)		1160*1150*2250 mm
Net.Weight		1300 kg
Loading Capacity	20'GP	10 units
	40'HC	20 units
Discharge Temperature Range		-20~50℃(> 45℃ derating)
Max Altitude		3000m(> 2000m derating)

**INVERTER COVER
AVAILABLE FOR
ANTI-CORROSION
SUITABLE WITH
HEAVY DUTY**

**INTELLIGENT PCS
with EMS**

**EASY OPERATION ON
MOBILE PHONE & COMPUTER**

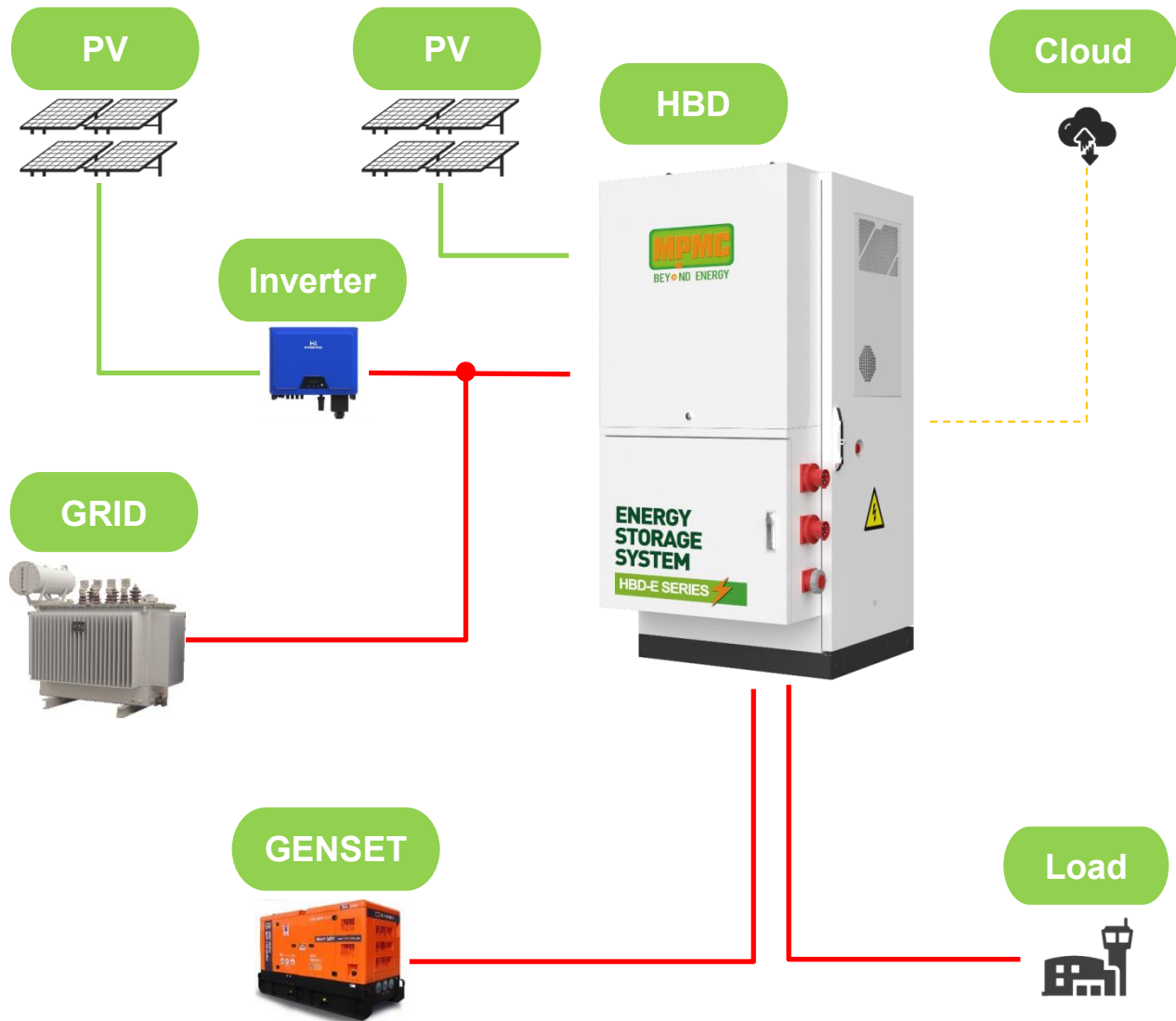


**INPUT & OUTLET SOCKETS
QUICK INSTALL AND EASY CONNECTED**

Specially designed for complex applications, flexible to meet the special needs of customers. A fixed and reliable source of electricity.

LiFePO₄ BATTERY
Long Life Design Up to
4000 cycles
High Quality Based on
**Specification Consistency
of CELLS~!**

Typical Application



MPMC USA



MPMC UAE



MPMC ZA



MPMC CN

MPMC POWERTECH CORP.

www.mpmc-china.com | www.mpmc-group.com
sales@mpmc-china.com

Photographs are for illustrative purposes only and may not reflect final specification.

Follow us



<https://www.facebook.com/mpmcgroup>



<https://www.linkedin.com/company/mpmcpowertech/>



<https://www.youtube.com/user/MPMCGenerator>

All information in this document is substantially correct at time of printing and may be altered subsequently. Final weight and dimensions will depend on completed specification.