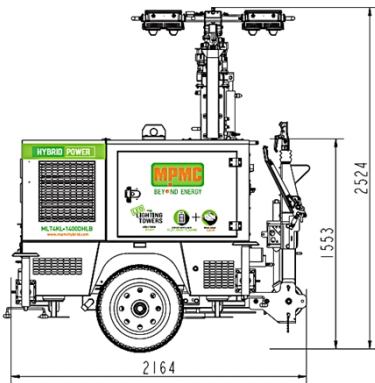
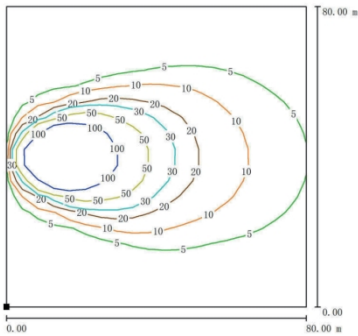


# MLT4KL-1400DHBL

# HYBRID POWER LIGHTING TOWER



## 4 x 350W 9m Isolux curve



**Lithium battery pack**

51.2V 314Ah 16 kWh



**Rated output**

6.0kW

## Products performance and advantages

- Environment friendly and resource saving
- Strong structure and easy operation;
- More than 9 hours lighting time by storage energy;
- Silent lighting at work by LFP batteries;
- BMS for LFP batteries protection;
- Auto control lights at day and nights

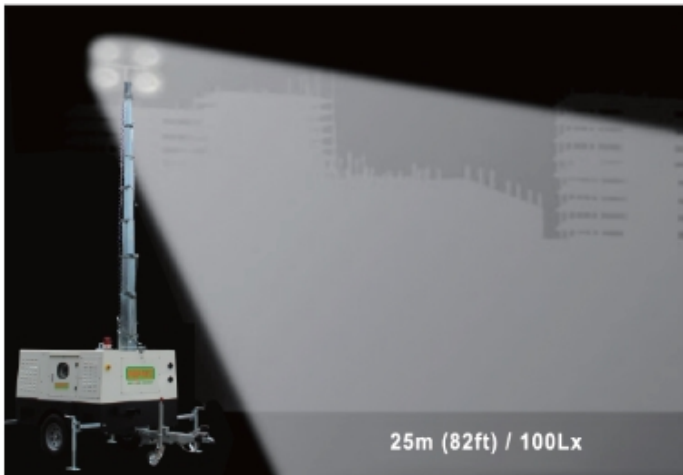
## Products characteristics

- Less fuel consumption, long run time
- Auto control system
- High efficiency
- Sturdy and durable
- Max height 9m

**WMI**

LABORATORY ACCREDITATION CERTIFICATE

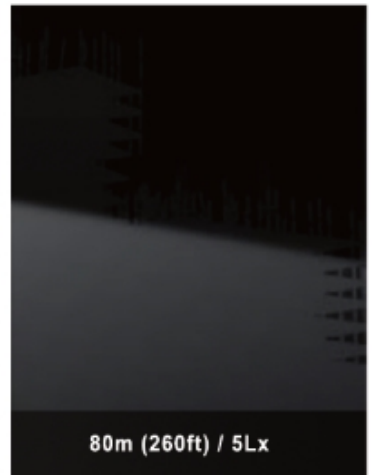
Certificate of  
the World Manufacturer Identifier Code



**25m (82ft) / 100Lx**



**50m (164ft) / 20Lx**



**80m (260ft) / 5Lx**

## General

Rated Voltage	DC48 V
Rated Genset Power	6.0 kW
Environmental Temperature	-10 °C ~ 50 °C
Trailer Attachment	Ball
Max Towing Speed	80 km/h
Wind Speed Rating	100 km/h
Tire Rim Size	14"

## Dimensions & Weight

Dimensions (Towing)	3454x1756x2529mm (L x W x H)
Dimensions (Deployed)	3454x2456x9552mm (L x W x H)
Dimensions (Stowed)	2270x2193x2529mm (L x W x H)
Container Load Capacity	7 units / 40HC
Weight	1540 kg

## Engine & Alternator

Engine Model	Kubota Z482-ET03
Emission	China T3 (Equal to EU Stage IIIA)
Alternator Model	MD6.0-48
Rated Speed	3000 rpm

## Battery Energy Storage System

Type	LFP (LiFePO <sub>4</sub> )
Rated capacity	16.07 kWh
Control system	BMS
Cycle Life	6000
Discharge of Depth	90%
Battery Discharging Time	12 h
Battery Charging Time	3 h (option)

## Fuel Tank

Capacity	100 L
Total Running Time	185 h

## Lighting & Mast

Light type	4 x 350 W LED
Lumen	238000
Mast Raise Operation	Hydraulic
Mast Rotation	355° Manual Operation
Light Tilt	Electrical

## Cloud (Option)

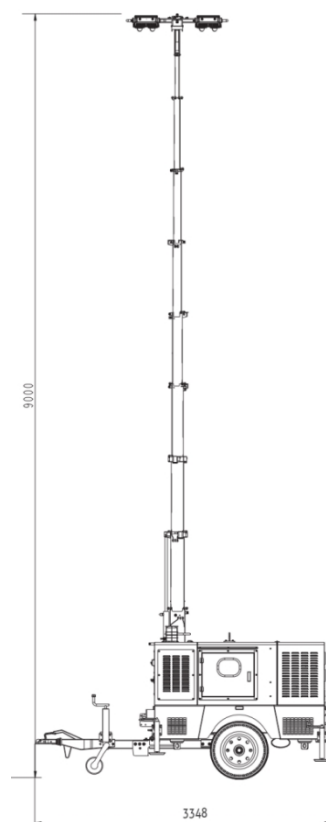
Type	GPS/GPRS/4G
------	-------------

## Standard Configuration

- Bundled base & standard canopy
- 1800kg trailer with overrun and parking brake
- Standard lifting lug
- Hydraulic power pack
- Smart control system
- Heavy-duty stabilizer legs
- Emergency stop button

## Options

- Cloud system
- Preheater
- Ring tow point



## Follow us



<https://www.facebook.com/mpmcgroup>



<https://www.linkedin.com/company/mpmcpowertech/>



<https://www.youtube.com/user/MPMCGenerator>

All information in this document is substantially correct at time of printing and may be altered subsequently. Final weight and dimensions will depend on completed specification.



**MPMC POWERTECH CORP.**

[sales@mpmc-china.com](mailto:sales@mpmc-china.com) | [www.mpmc-china.com](http://www.mpmc-china.com)

Photographs are for illustrative purposes only and may not reflect final specification.