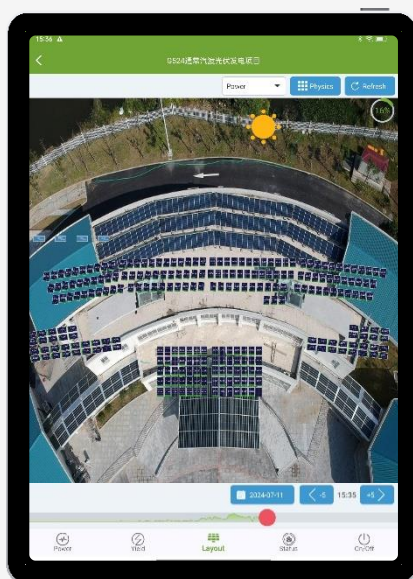


[How to use GNE Honeypot APP]



Installation Manual

Download address

IOS: Apple App Store

Android: Google play & <https://g.gnetek.com/static/download/GneMonitorSystem.apk>



GNE App

GNETEK TOOLS

1. Login Interface

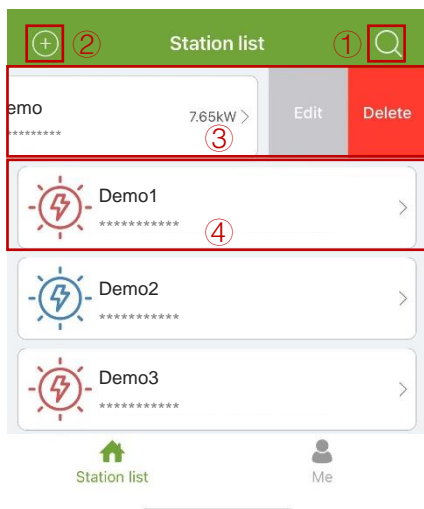
The main login interface features a green header with the word "Login". Below it is the GNETEK logo. The form includes two input fields: "Please enter the username" and "Please enter password" with a toggle for "Remember the password". Below the inputs are five buttons: "Login" (1), "Demo login" (2), "Retrieve password?" (3), "Register now->" (4), and a Google logo (5). Red arrows point from callouts 3 and 4 to the "Retrieve password" and "Regedit" screens respectively.

- ① **Login:** The registered user can log in by entering the account password according to the above requirements.
- ② **Demo login:** You can log in to a virtual account to experience app functions.
- ③ **Retrieve password:**
 - Click "Retrieve password".
 - Enter the registration email address and click "Get verification code";
 - Find the verification code in your mailbox and enter it ;
 - Enter a new password, then click "Save";
- ④ **Register now:**
 - Click "Register Now".
 - Enter username, password and email, then click "Get verification code";
 - Find the verification code in your mailbox and enter the verification code ;
 - Click "Regedit" to complete the registration ;
- ⑤ **Google login:** If you have a Google account, you can click here to quickly log in with your Google account.

The "Retrieve password" screen has a green header with a back arrow and the text "Retrieve password". It features the GNETEK logo and three input fields: "Please enter your email", "Please enter verification code" (with a "Get verification code" button), and "Please enter password". A green "Save" button is at the bottom.

The "Regedit" screen has a green header with a back arrow and the text "Regedit". It features the GNETEK logo and four input fields: "Please enter the username", "Please enter password", "Please enter your email", and "Please enter verification code" (with a "Get verification code" button). A green "Regedit" button is at the bottom.

2. Monitoring System



- ① **Search:** Search by station name or Beehive MAC ID.
- ② **Set up a new power station:** Click here to set up a new power station.
- ③ **Modify and delete a power station:** Left slide the power list item in the power station list to display the Edit and Delete buttons, you can click "Edit" to edit the power station and click "Delete" to delete the power station.
- ④ **Station Management:** Click the power station directly to enter the monitoring system.

⚠ Tips

- Swipe down to refresh the power station list.
- The page for setting up a new power station is the same as that for editing a power station.

#Set up a power station

Step1: Station Information

- Enter Station Name, TimeZone, Electrovalence, Currency, address information and upload image. Fields marked with "*" are required, others are optional.
- When all the fields with "*" are completed, click "Save" to proceed to the next step.

Step2: Inverter & Module

- Click the "+" sign on the inverter line to edit the inverter information ;
- Enter the Label, Manufacturer, Model and Peak Power, then click "OK" ;
- Click the "+" sign on the module line to edit the module information ;
- Enter the Manufacturer, Model and Power, then click "OK" , click "Save" to proceed to the next step.

⚠ Tips

- Only one module of the same model needs to be filled.

2. Monitoring System

Step3: Data Devices

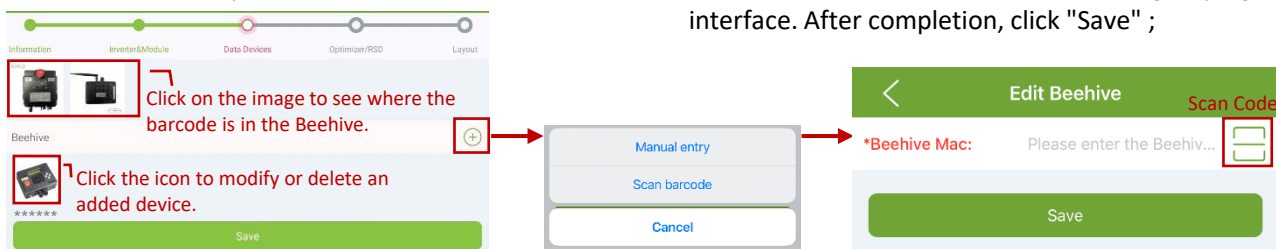
- Click the "+" sign on the line of the Beehive and select the method of adding the Beehive in the pop-up menu.

Manual entry

- Click the "Manual Entry" menu item ;
- Enter the Beehive MAC, or click "Scan Code" to scan the barcode on the Beehive.
- Click "OK" to complete the addition ;

Scan barcode

- Click the menu item "Scan barcode" to take photos of multiple barcodes;
- After the addition is completed, you can edit and delete the number of the Beehive in the grouping interface. After completion, click "Save" ;



Step4: Optimizer/RSD

- Click "New String", select "Inverter", click the "+" sign of the optimizer, select the method of adding optimizer in the pop-up menu.

Online search

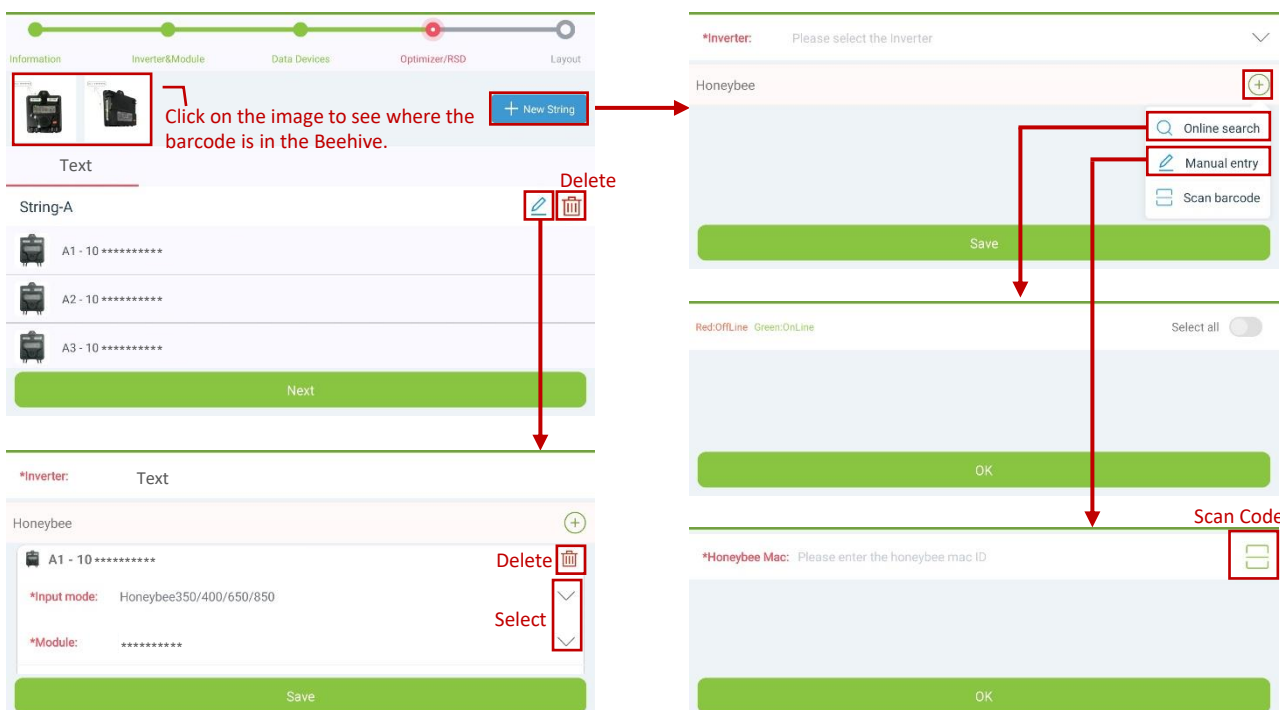
- Click the "Online Search" menu item ;
- Select the optimizer number that you want to add to this group and click "OK" to complete the addition ;

Manual entry

- Click the "Manual Entry" menu item ;
- Enter the optimizer number, or click Scan Code to scan the barcode on the optimizer ;
- Click "OK" to complete the addition ;


Scan barcode

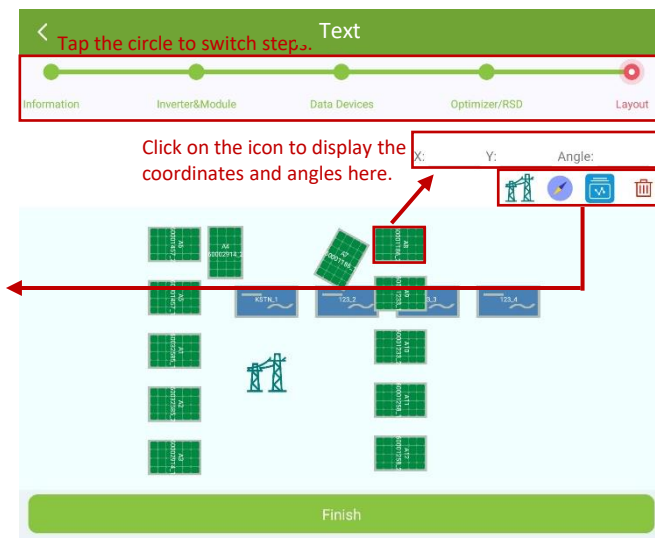
- Click the menu item "Scan barcode" to take photos of multiple barcodes. After completion, click "Save" .
- After the addition is completed, the input mode and module of the optimizer can be modified in the grouping interface. After completion, click "Save" .



2. Monitoring System

Step5: Layout

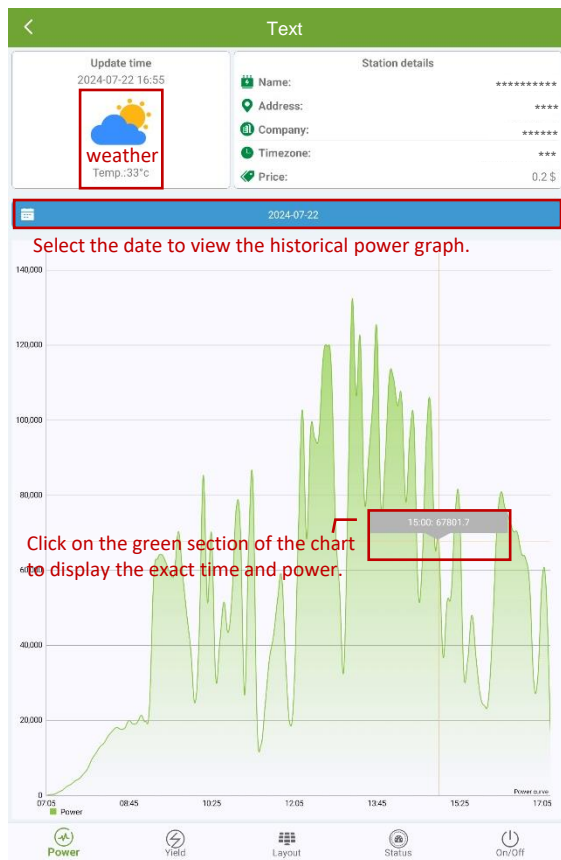
- In the Layout screen, select an icon that can be rotated by dragging or entering the specified coordinates and angles, and place it as you see fit.
- Slide in a blank area to move the canvas.
- Click the icon to add it to the canvas. If you do not need it, click it to select the icon and click  to delete it. The icon of the PV module cannot be deleted on the layout page, you can switch to the previous step to select the target component and delete it.
- After placing the position of the photovoltaic panel, click "Finish" to complete the power station creation.



#Monitoring system

◆ Power

- Click "Power" to view the power graph;



◆ Yield

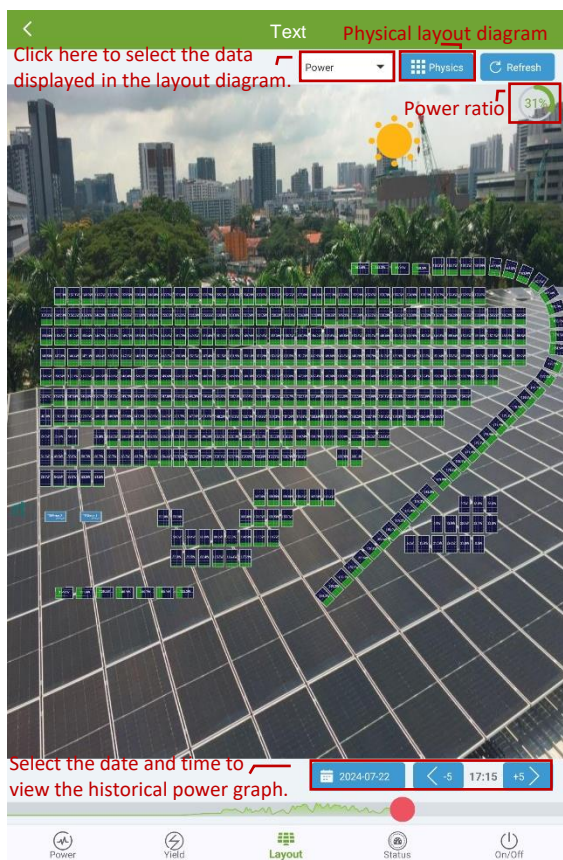
- Click "Yield" to view the electricity bar chart, you can choose to view historical data ;



2. Monitoring System

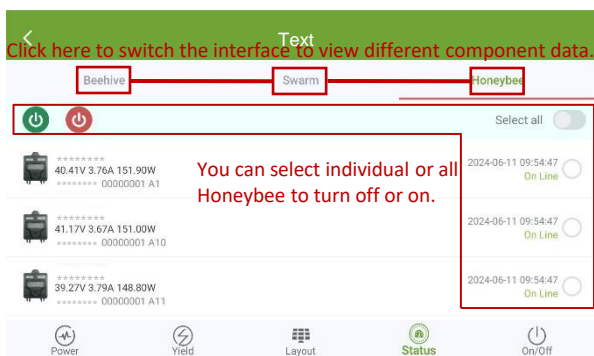
◆ Layout

- Click "Layout" to view power station layout display, you can choose to view the power, current, voltage and temperature data of each photovoltaic panel in the layout ;
- Drag the circle on the timeline to see how the power of the plant changes at different times of the day.



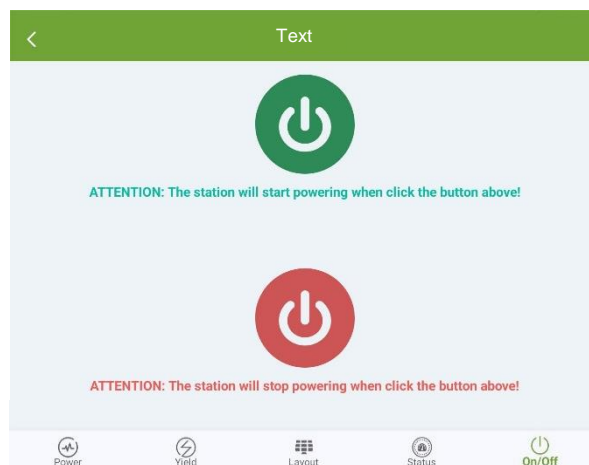
◆ Status

- Click "Status" to view the Beehive, Swarm and Honeybee online status and other information ;

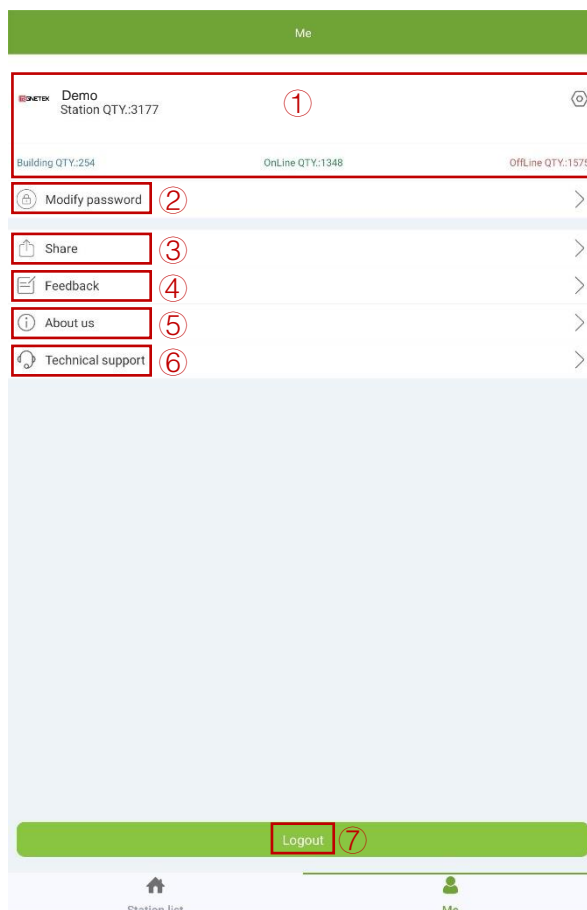


◆ On/Off

- Click "On/Off" to view power station switch, you can click the switch button to start or stop power generation ;



3. "Me" Interface



① **Account management** : On the "Me" screen, tap the user profile picture to enter the screen for modifying user information .

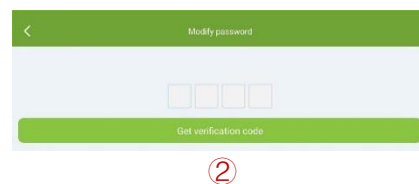
①

- Click here to go to the page to delete your account.
- Fill in the email verification code to delete the account.
- **Note that this operation cannot be restored.**

3. "Me" Interface

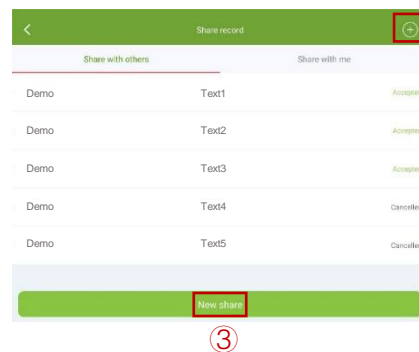
② Modify password:

- Click here to modify password;
- Click "Get verification code", then find the verification code in your mailbox and enter it;
- Enter the new password and click "Save" to complete the change ;



③ Share:

- Click the "+" sign in the upper right corner or click "New Share" to share your own power station.
- In the "Share with others" list, you can view the shared history and sharing status, whether the sharing is successful or whether it is received. If you want to Unshare, click on the station where you want to end the share and click on "Unshare".
- In the "Share with me" list, you can view the power station shared by others, click the power station, and choose to agree or reject.

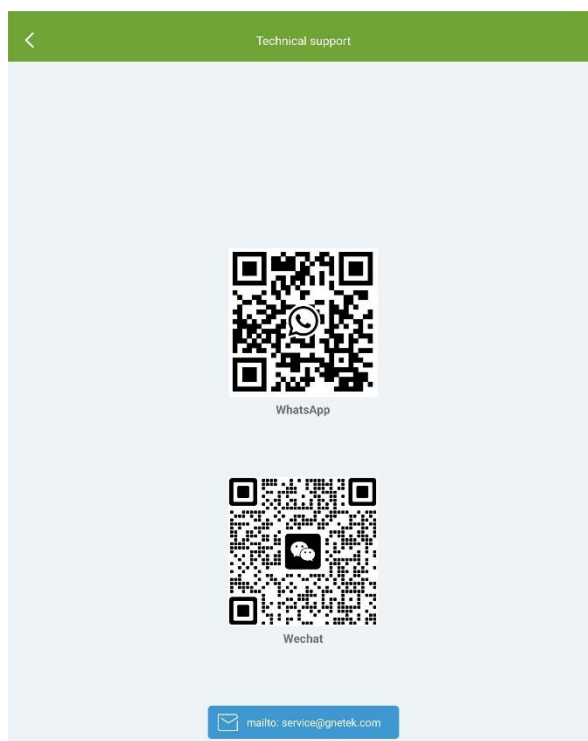
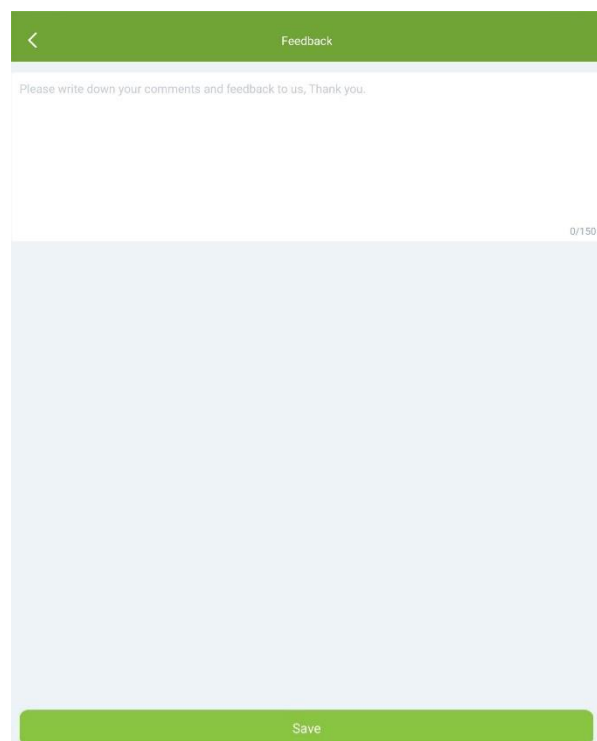


④ **Feedback:** Click here to write your feedback in order to provide better service in the future.

⑤ **About us:** Click here to learn about the developer of this app.

⑥ **Technical support:** Click here to contact us via WhatsApp , WeChat or email ;

⑦ **Logout:** Click here to log out of your current account.





G N E W e b s i t e

GNE New Energy

+86 400 777 1331

service@gnetek.com

www.gnetek.com