

HENAN·CHINA XINXIANG SIMO BLOWER CO.,LTD.



XINXIANG SIMO BLOWER CO.,LTD.

Forge ahead the pursuit of excellence





SIMO BLOWER COMPANY INTRODUCTION

Xinxiang SIMO Blower Co.,LTD.,formerly known as the state-owned Xinxiang Blower Factory,was founded in 1955,engaged in the production of fans for more than 60 years.Listed on the New Third Board in May 2018,with a registered capital of 50 million yuan,it is one of the largest fan manufacturing enterprises in China,and passed the national integration of two management system evaluation,ISO9001 quality management system certification,ISO14001 Environmental management system certification,ISO45001 Occupational health and safety management system certification,CE certification.

The company covers an area of 100 acres,has a variety of processing and testing equipment more than 300 sets,the annual production capacity of 10,000 sets.There are more than 300 employees,including more than 60 professional and technical personnel.It has a number of special laboratories including physical and chemical performance test,metallographic analysis test,non-destructive testing test,fan aerodynamic performance test and so on.In order to obtain more efficient and energy-saving operation effect,the company adheres to the business philosophy of "people-oriented,science and technology enterprise",and has maintained close cooperative relations with Xi 'an Jiaotong University,Beijing University of Aeronautics and Astronautics,Shen Blower Research Institute and other major scientific research units over the years.The company has developed into a professional production enterprise with one-stop service of R &D,manufacturing,performance testing,installation and commissioning.The products are mainly centrifugal fans and axial fans,covering more than 30 series and more than 2,000 kinds of specifications,widely used in electric power,metallurgy,building materials,coal,petrochemical, industrial kiln and other fields.

In the future,our company will rely on its own strong technical strength and sophisticated sophisticated equipment,practice the "people-oriented,integrity management,innovation and development,lean management,service to society"corporate philosophy,in-depth insight into domestic and foreign markets,and constantly promote technology research and development,improve customer service comprehensive capabilities,to achieve rapid and healthy development.Strive to build "SIMO"into a brand enterprise with international competitiveness.

SIMO B

PRODUCTION EQUIPMENT



◆ LR-12025 Laser cutting machine



◆ GX-150 CNC spinning machine



◆ Robot welding



◆ 40T Dynamic balancing machine



◆ Annealing furnace

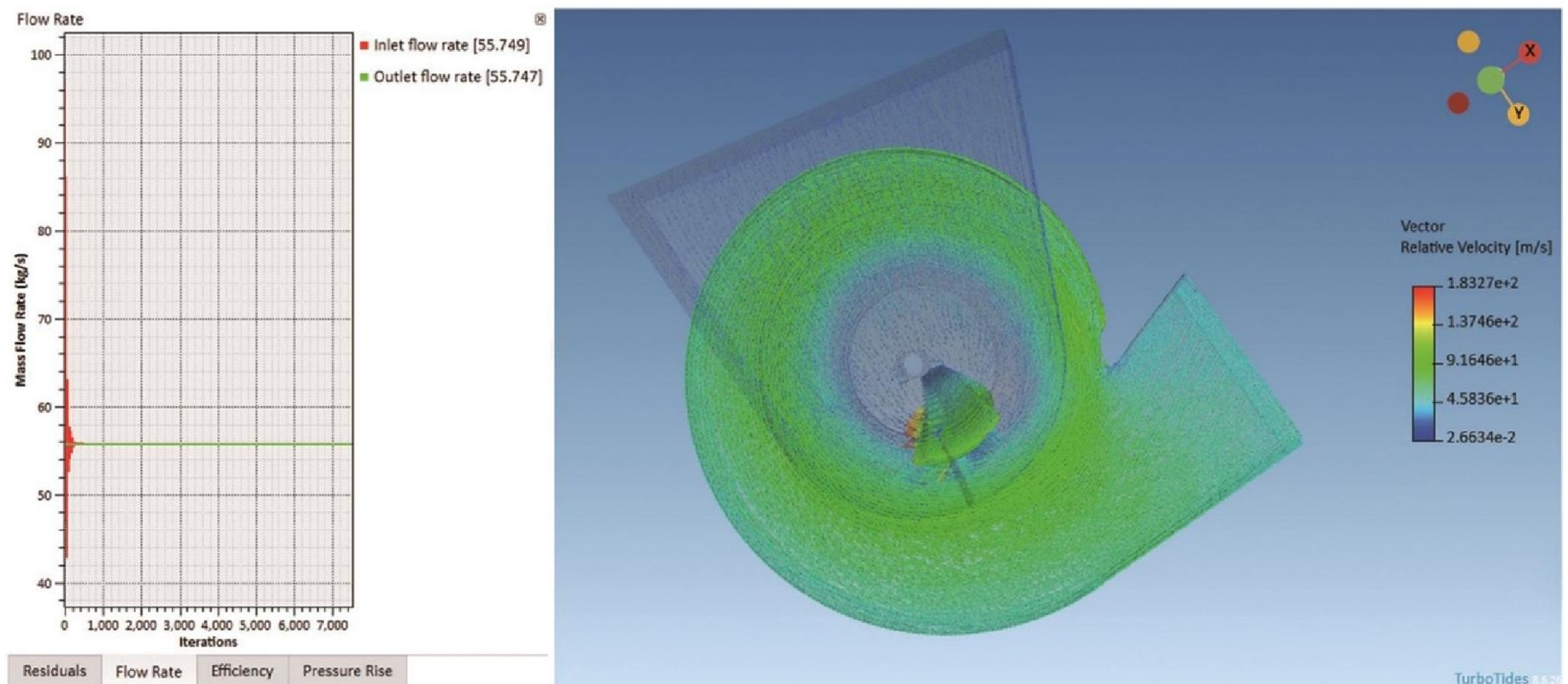


◆ Fan aerodynamic performance test center

R & D CAPABILITY

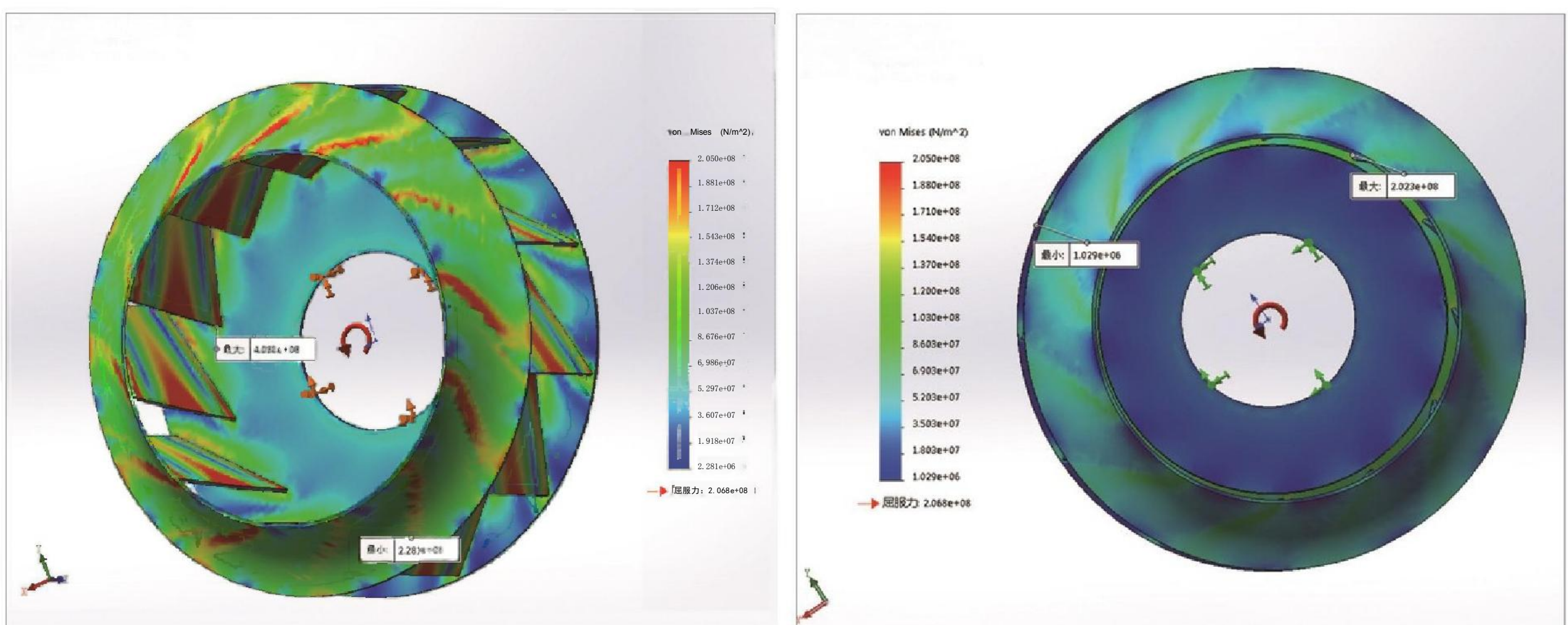
1、CFD Performance analysis

The design of centrifuge fan components is based on simulation analysis using CFD technology, and optimization design is carried out on this basis.



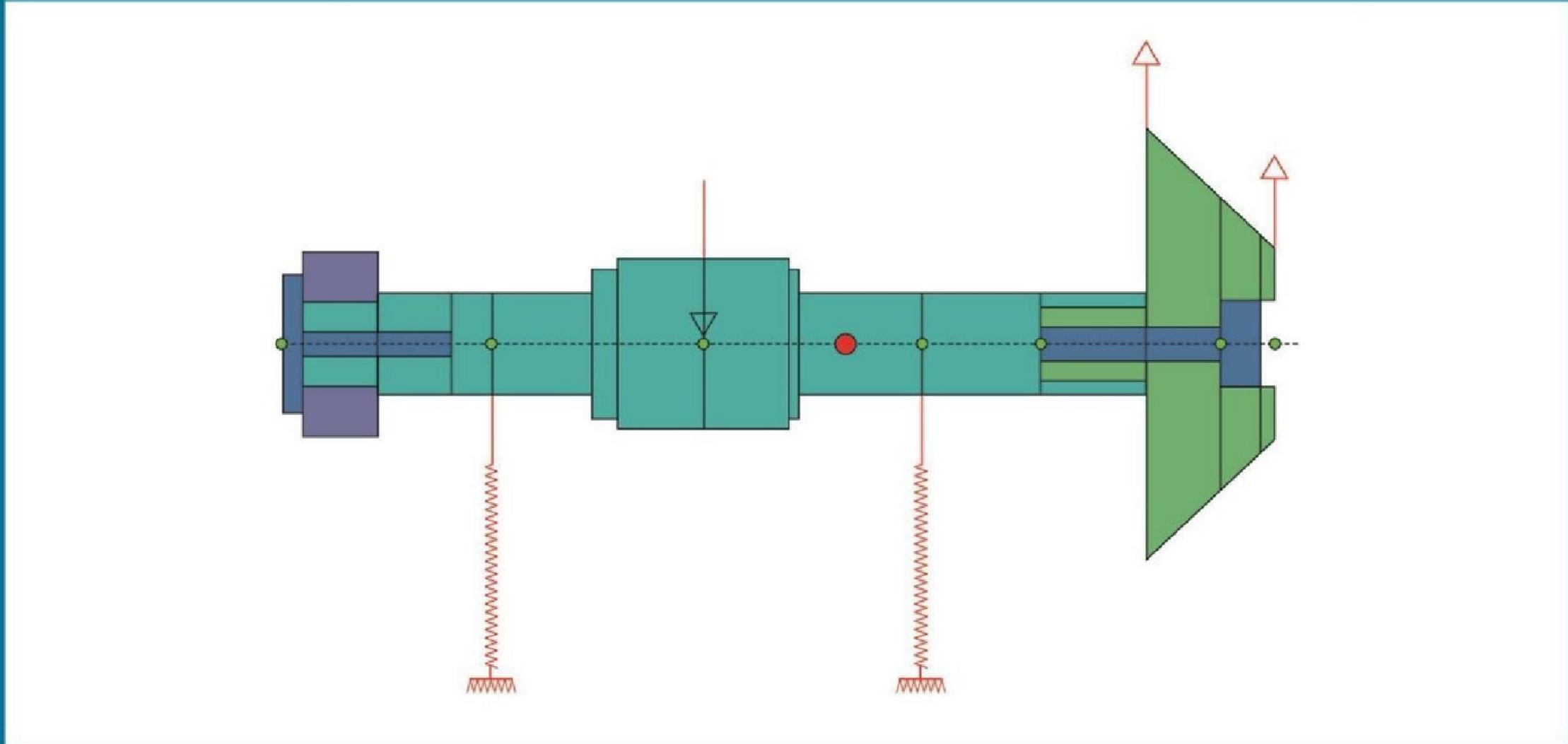
2、Finite element analysis

Perform finite element analysis and optimization on the strength and mode of the impeller to ensure its long-term stable operation.



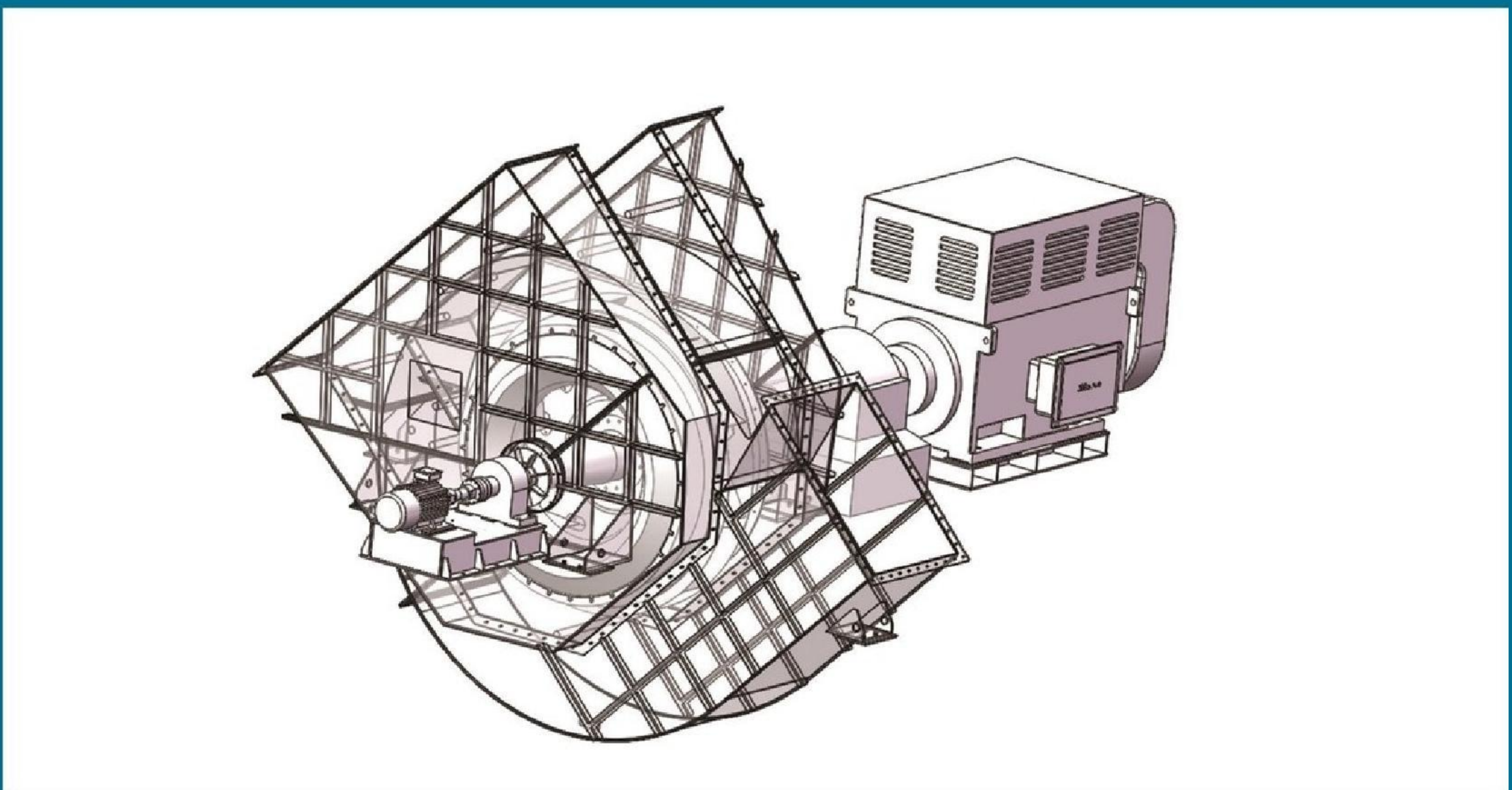
3、Rotor dynamics analysis

The high-speed shaft operates between the second critical speed, in accordance with the provisions of AP1617 standard on the relationship between critical speed and operating speed, and the rotor assembly design meets the standards and usage requirements.

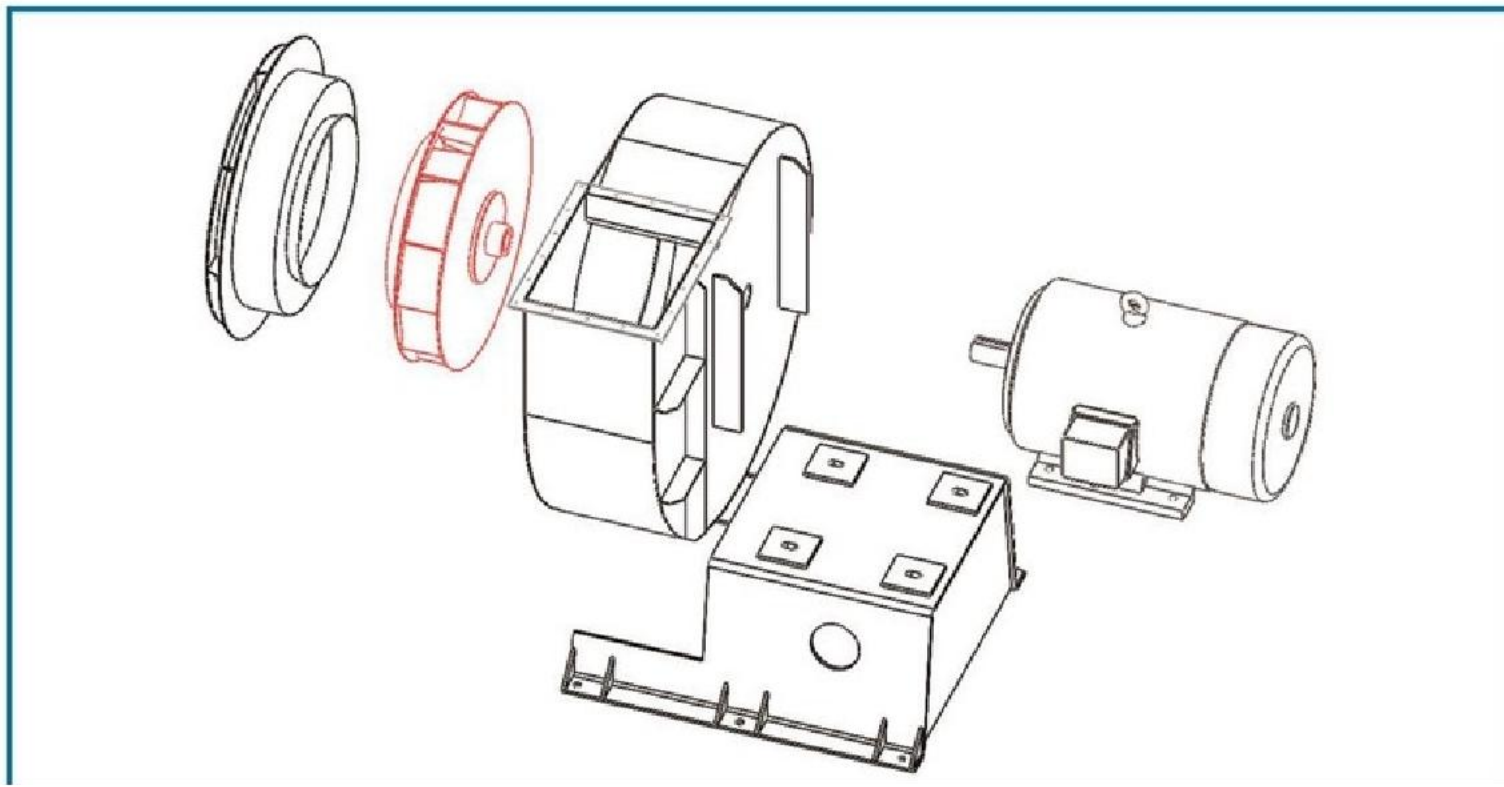


4、Software platform

The use of 3D design software provides users with digital modeling and verification tools for product design and processing processes.



FAN STRUCTURE



Centrifugal fan-Directly Driving

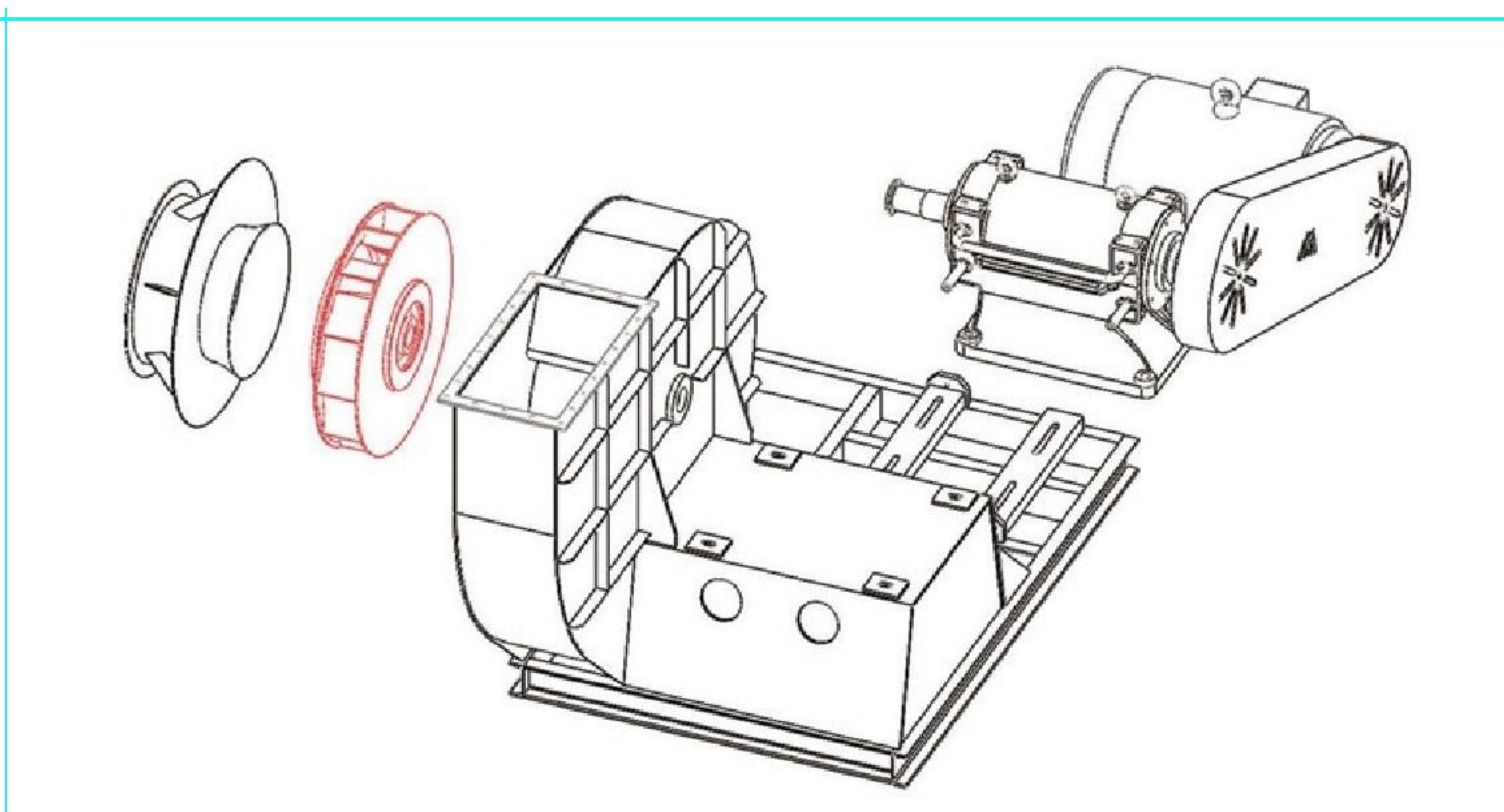
【Features】 Simple structure
cover small area

【Performance range】

300-30000m³ /h

400-10000Pa

【Medium temperature】 ≤80℃



Centrifugal fan-Belt Driving

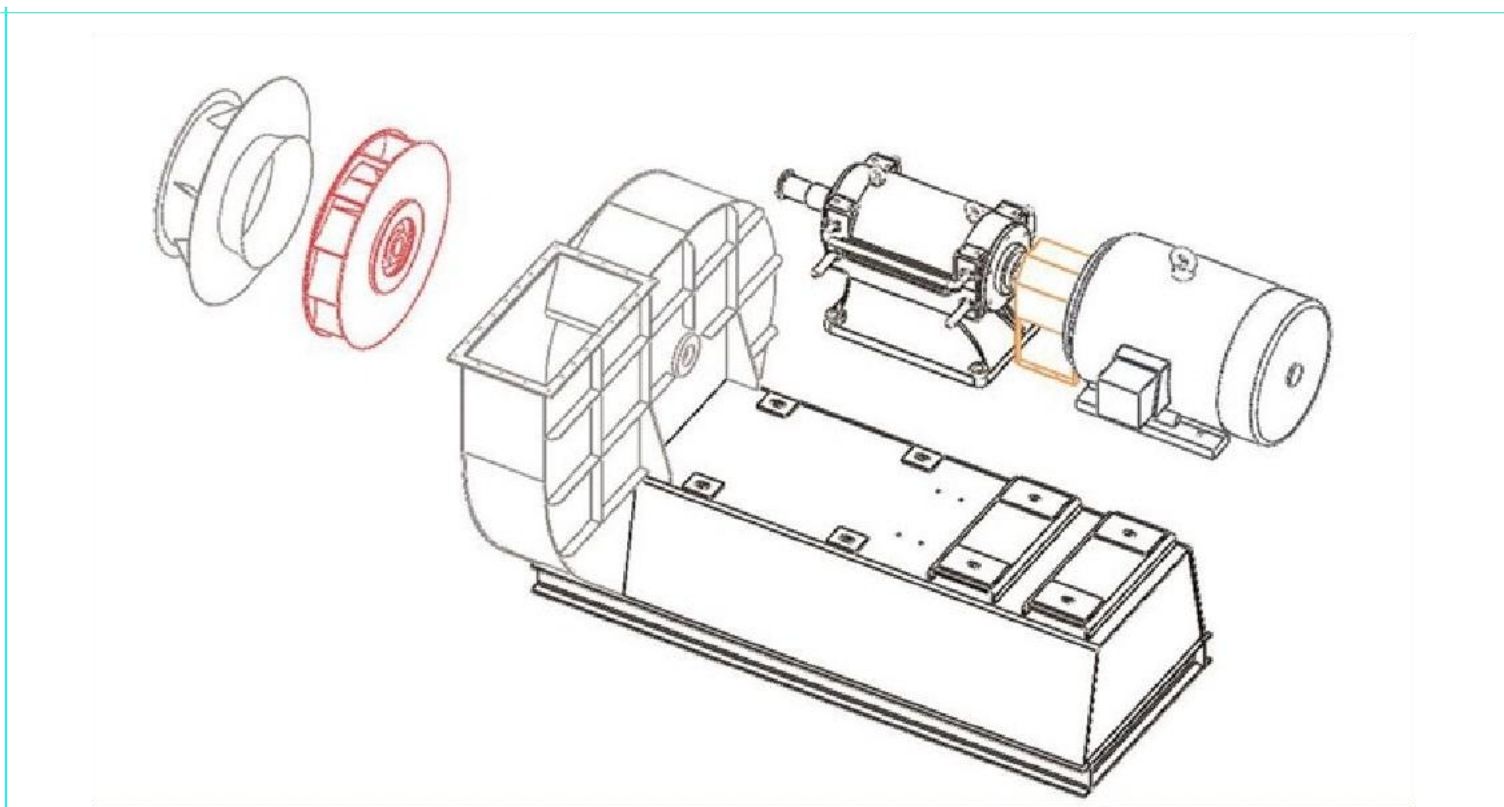
【Features】 Motor independent
speed,fan speed variable.

【Performance range】

300-200000m³ /h

800-25000Pa

【Medium temperature】 ≤800℃



Centrifugal fan-Coupling Driving

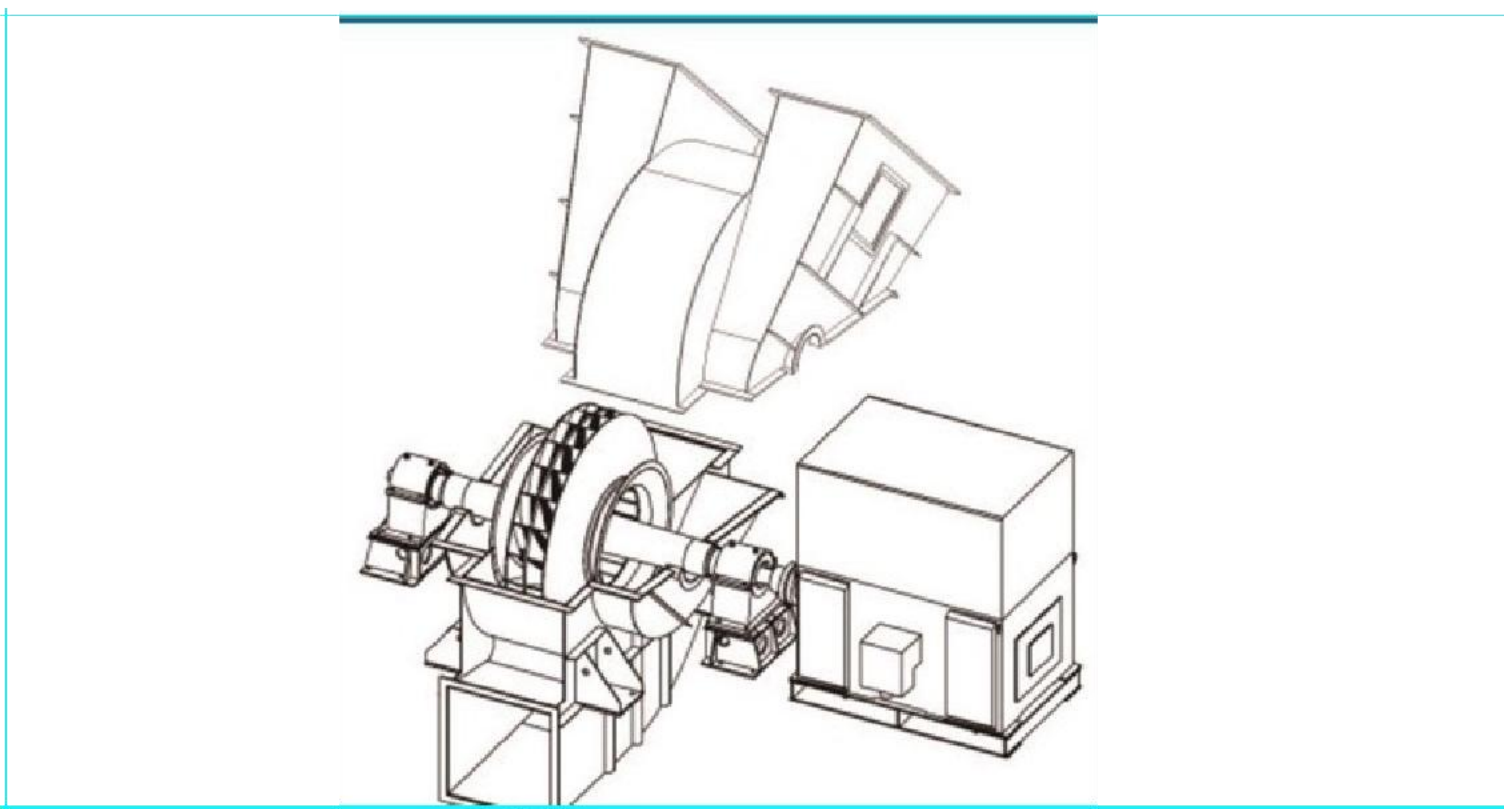
【Features】 High stability and
reliability

【Performance range】

1500-950000m³ /h

1200-25000Pa

【Medium temperature】 ≤600℃



Centrifugal fan-Double support Type

【Features】 Stable and reliable
structure,easy maintenance

【Performance range】

200000-1600000m³ /h

1200-15000Pa

【Medium temperature】 ≤500℃

PROJECT CASE

Dust removal fan of Iron and Steel Plant (Baosteel site)

Air flow: 210~224m³/s
Fan pressure: 5200~6300Pa
Medium temperature: 80~120℃
Efficiency: 85.4~89.6%
Motor: 8P-1800Kw
Impeller diameter: 3150mm
Blade type: Airfoil blade



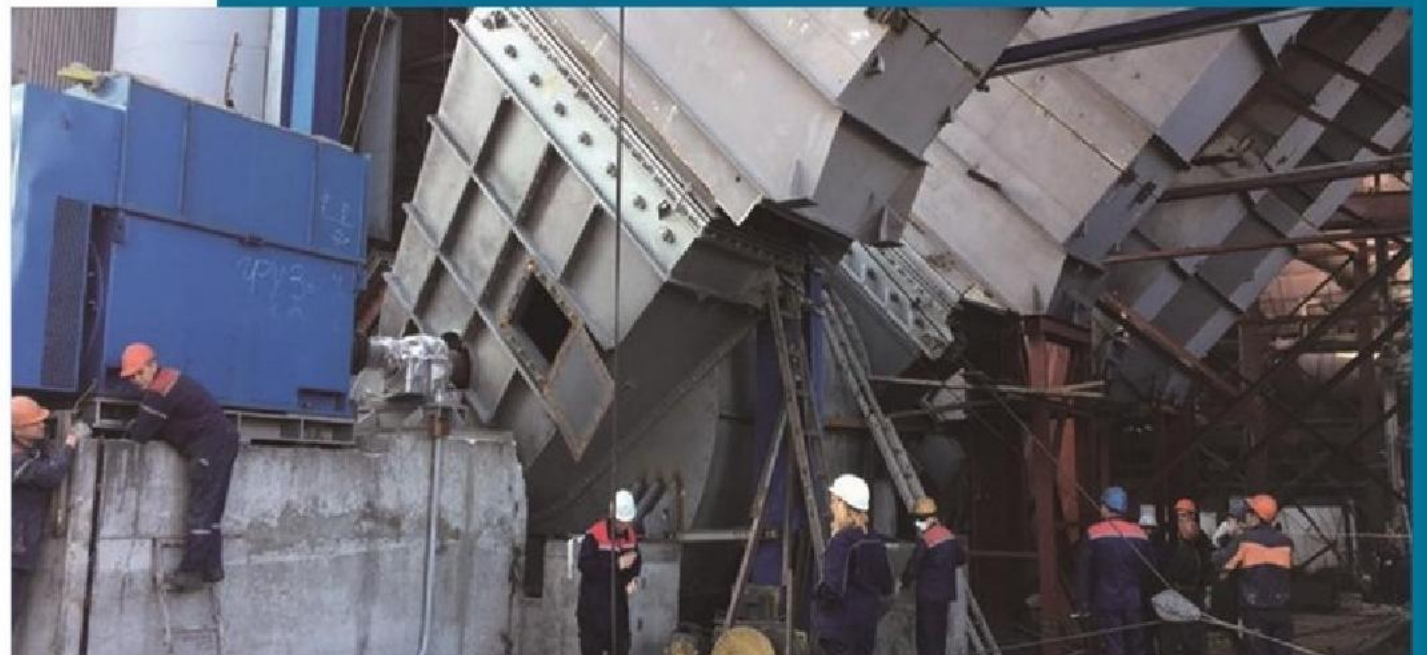
Electrolytic aluminum purification smoke exhaust fan (inlian site)

Air flow: 162~180m³/s
Fan pressure: 4450~4800Pa
Medium temperature: 65~155℃
Efficiency: 85.8~89.4%
Motor: 6P-1250Kw
Impeller diameter: 2500mm
Blade type: Airfoil blade



Steel Industry (MMK site in Russia)

Air flow: 188~275m³/s
Fan pressure: 7000~9000Pa
Medium temperature: 100~150℃
Efficiency: 83.8~85.6%
Motor: 6P-2500Kw
Impeller diameter: 2550mm
Blade type: Backward blade



Glass production line high temperature fan (Taiwan glass site)

Air flow: 120~165m³/s
Fan pressure: 8850~10100Pa
Medium temperature: 350~400℃
Efficiency: 87.5~88.9%
Motor: 6P-2000Kw
Impeller diameter: 3020mm
Blade type: Backward blade

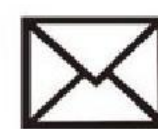




Contact us



+86-18003807607



info@simoblower.com

SERVICE

“SIMO Blowerwholeheartedly serve you”

We are committed to providing customers with excellent equipment and quality service. We have a number of efficient models, with rich experience in selection of technical engineers, relying on professional design assistance software (flow field analysis software, structural analysis software), to ensure that within 2 working days for you to quickly develop professional solutions.

As a company with solid technical strength and meticulous care for customers, our purpose is to provide you with a full range of efficient and reliable after-sales service; The service team keeps the telephone open 24 hours to provide you with consulting services; For any questions or needs you have, we will respond with the fastest speed and provide support; Ensure your production process runs smoothly. We promise that domestic customers arrive at the site in 24 hours, foreign customers arrive at the site in one week.

XINXIANG SIMO BLOWER CO.,LTD.

Address: No. 343, SIMO Road, Fengquan district
xinxiang city, Henan Province, P.R. China

Phone/WhatsApp/WeChat: +86-18003807607

Web: www.simofan.com / www.simo-blower.com

E-mail: info@simoblower.com