

# **ECO-E215WS HMI Configuration Screen User Manual**

Version	Edited by	Reviewed by	Approved by
A/1	Chen Shuming	Meng Yang	Hong Zhucai

**Shanghai Elecnova Energy Storage Technology Co., Ltd.**

## **Safety Precautions**

### **Danger and Warning!**

**This system may only be installed by professionals.**

**The manufacturer shall not be held liable for any fault caused by failure to comply with the instructions given in this Manual.**

### **Note!**

**After removing the overall packaging of the system, please read all the contents of this Manual before setting or using the system.**

**In order to ensure the proper functioning of this energy storage system, the user is requested to install, set, use, and maintain the system in accordance with the instructions given in this Manual.**

**This Manual is not intended to include all details or changes to the device, nor does it provide for every possible contingency related to installation, operation, and maintenance. If you would like further information or if there are any special issues that are not fully explained in this Manual, please contact us.**

**Revision History**

Version	Description	Editor	Date	Remarks
A/1	Release (first draft)	Chen Shuming	February 29, 2024	

## Table of Contents

1. Hardware Parameters .....	1
2. Operation Instructions .....	2
2.1 Function Introduction .....	2
2.2 Account Login .....	2
2.3 Overview .....	3
2.4 Monitoring .....	4
2.5 Strategy .....	7
2.6 Alarm .....	9
2.7 Setting .....	10

## 1. Hardware Parameters

Item	Specifications
<b>Product Features</b>	
LCD screen	10.1" TFT
Backlight type	LED
Resolution ratio	1024×600
Display brightness	300cd/m2
Touch screen	Four-wire resistive type
Input voltage	24±20%VDC
Rated power	6W
Processor	Cortex-A53 quad-core 1GHz
Memory	512M
System storage	8G
<b>External Interfaces</b>	
Serial interface	Mode 1: COM1(RS232), COM2(RS485), COM3(RS485), COM4(RS232) Mode 2: COM1(RS232), COM4(RS232), COM9(RS422)
USB interface	1×Host
Ethernet port	1×10/100MHz self-adaptive
<b>Environmental Conditions</b>	
Operating temperature	0℃-50℃
Operating humidity	5%-90% (without condensation)
Storage temperature	-10℃ to 60℃
Storage humidity	5%-90% (without condensation)
<b>Product Specifications</b>	
Shell material	Cast aluminum panel
Dimensions (mm)	271×213
Cabinet opening (mm)	260×202
<b>Certification</b>	
Product certification	Complying with CE/FCC certification standards
Protection level	IP65 (front panel)
Electromagnetic compatibility	Industrial level 3

## 2. Operation Instructions

### 2.1 Function Introduction

The energy storage system supports the on-site viewing of its operating status and monitoring data, the on-site configuration of strategy parameters, and the on-site viewing of alarm records through the HMI configuration screen.

### 2.2 Account Login

The HMI configuration screen has two types of account: engineer account and administrator account. Both engineer account and administrator account support the viewing and editing of operational permissions. Without logging in to the account, only viewing operations are supported. The administrator account can reset the password of engineer account.

Select the account and enter the correct password, so as to complete the account login. (Figure 1)



Figure 1

Click the account name in the upper right corner, and then a "log out" button will pop up. Click it to log out of the account. (Figure 2)

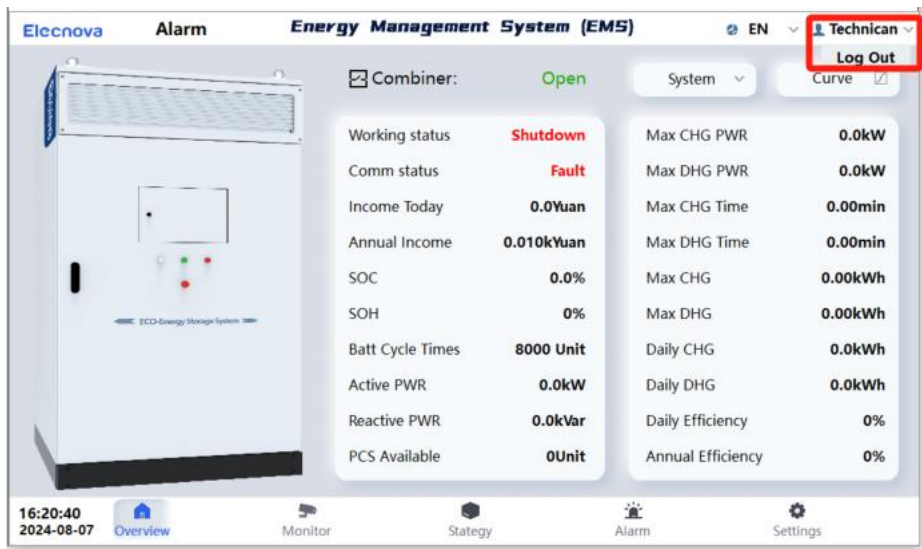


Figure 2

2.3 Overview

The overall operation data of the BCQ system and grid-tied busbars are displayed, the switching of the system as a whole and each grid-tied busbar is supported, and the viewing of parameter operation curve chart is supported. (Figure 3)

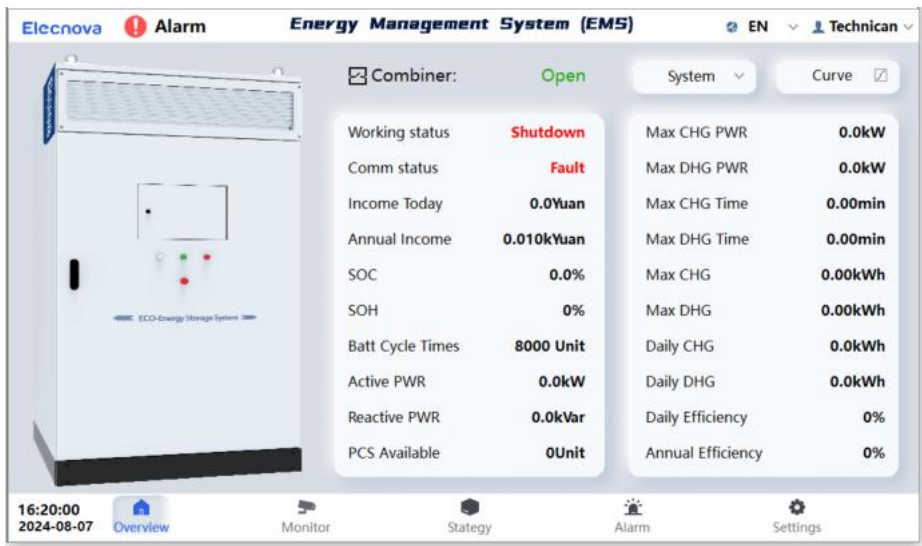


Figure 3

Operation Curve Chart:

This is the operation curve chart that supports the viewing of power parameters, charging/discharging level, energy storage benefits, and battery SOC of the BCQ system. (Figure 4)

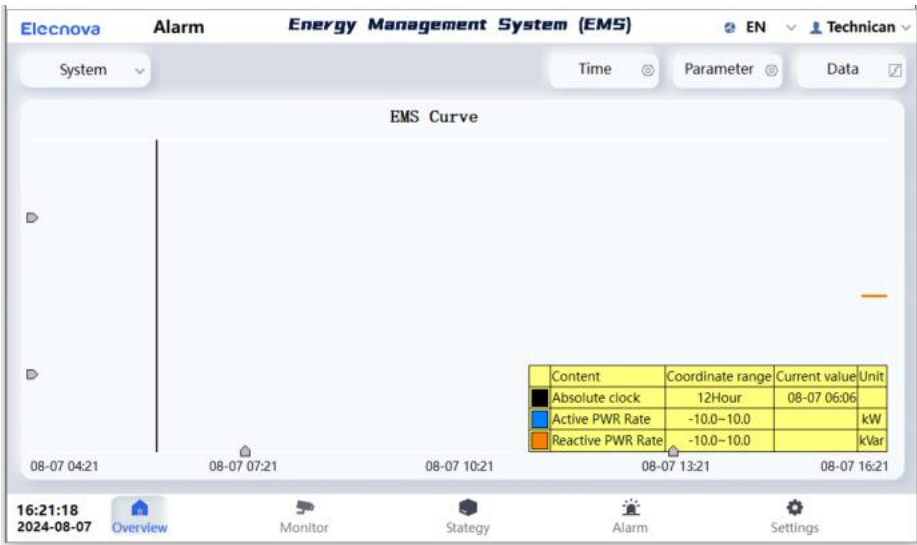


Figure 4

When viewing the operation curve, you can set the query time: (Figure 5)

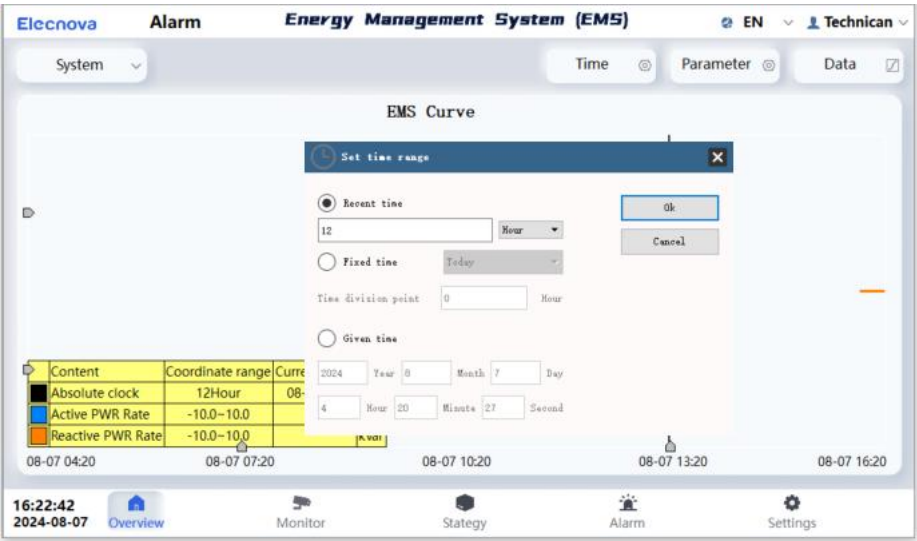


Figure 5

2.4 Monitoring

The operation data of BCQ system, PCS, BMS equipment, and auxiliary systems are displayed, and the viewing of parameter operation curve chart is supported. The remote control of equipment is supported. (Figure 6)

You can switch to different energy storage cabinets in the upper left corner of the interface.





Figure 6

Operation Curve Chart:

The viewing of operation curve of equipment parameters is supported. The switching of parameters and the setting of query time are supported. (Figure 7)

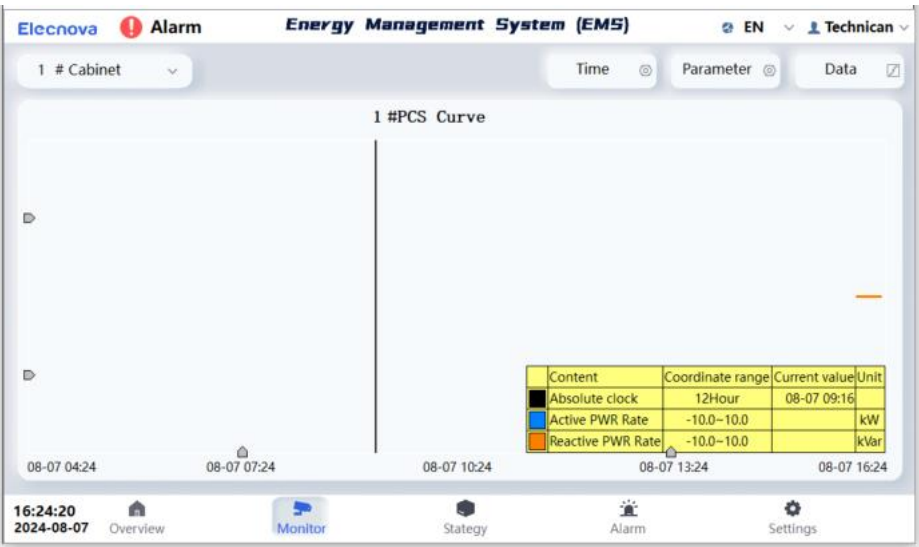


Figure 7

Remote Control:

Click the control button and select the operation content and password in the pop-up window, so as to complete the control operation. (Figure 8)

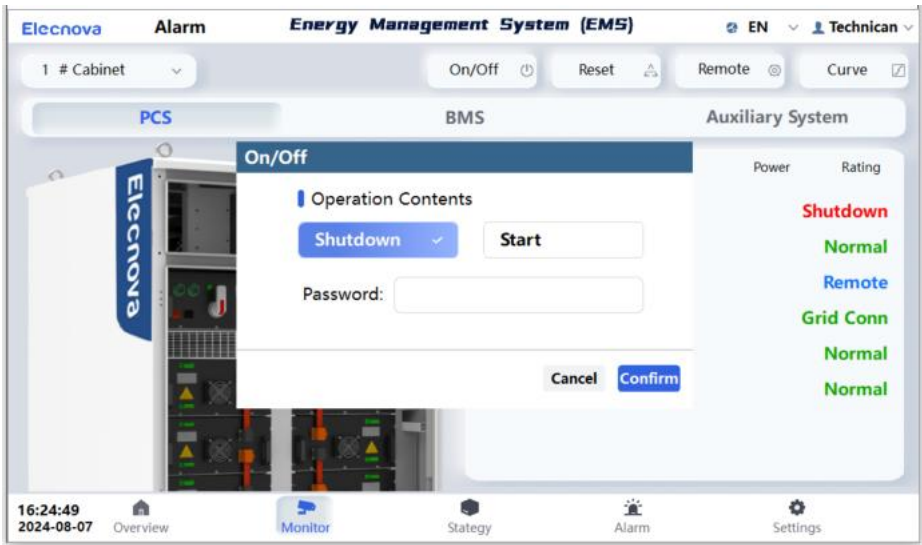


Figure 8

Battery Cell:

Click "Battery Details" on the BMS equipment monitoring page, so as to view the detailed data of battery cells. (Figure 9)



Figure 9

In "Details of Battery Cell" in Figure 10, the voltage and temperature data of all battery cells can be viewed, and the quick queries by entering the battery section number and temperature measurement point is supported.

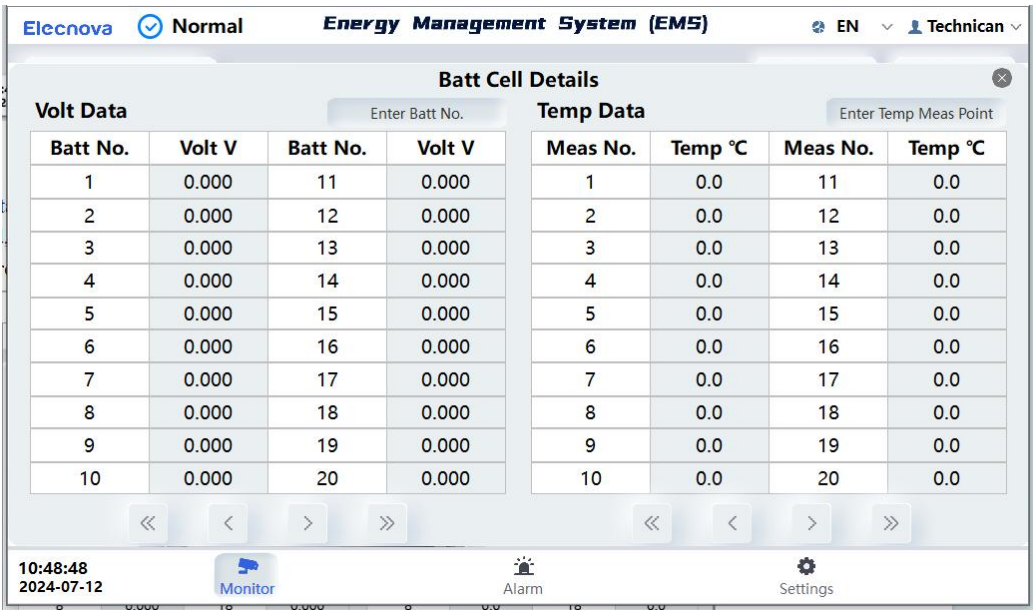



Figure 10

2.5 Strategy

The operation data of BCQ system, PCS, BMS equipment, and auxiliary systems are displayed, and the viewing of parameter operation curve chart is supported. The remote control of equipment is supported. (Figure 11)



Figure 11

In "Operation Strategy" in Figure 11, the strategy status, current strategy, remote status, reverse power transmission, and bus mode are displayed. Click on the icon  to perform remote control (Figure 12). Select the operation contents and enter the password for verification. The operation will be completed once the password is verified as correct.

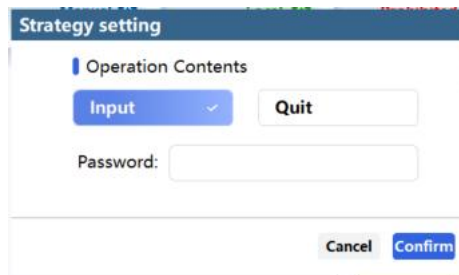


Figure 12

Strategy Switching:

Click "Current Strategy" to enter the strategy switching and parameter setting page (Figure 13):



Figure 13

If the energy storage system has two sections connected to the busbar, please set the strategy parameters separately. After setting, enter the password and click "OK" to complete the strategy switching and parameter setting work.

Power Curve:

The operation trend charts of target power and actual power of the selected grid-tied busbar and the whole system are displayed respectively. The query based on selected historical time is supported (Figure 14).

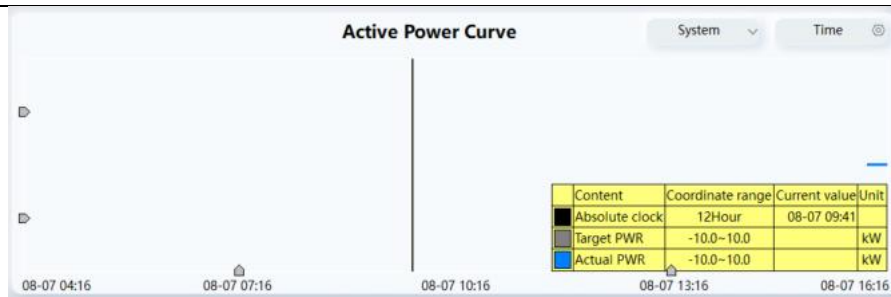


Figure 14

## 2.6 Alarm

Various alarm information during the operation of energy storage system is displayed, including real-time alarms and historical alarm records. (Figure 15)

If there is an alarm during the operation of the energy storage system when any other interface is displayed on the screen, the alarm icon in the upper left corner will flash continuously.

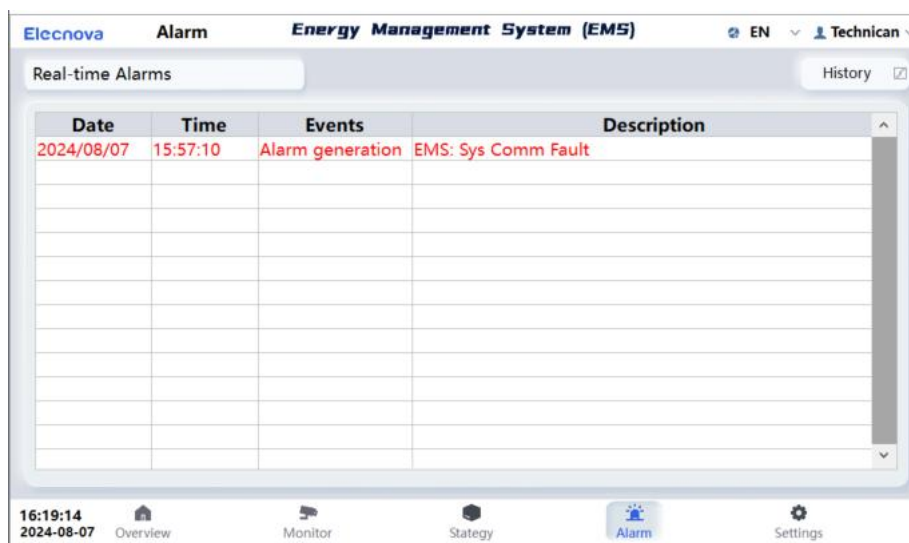


Figure 15

Click on "Historical Alarm" to display the historical alarm records of the energy storage system (Figure 16):

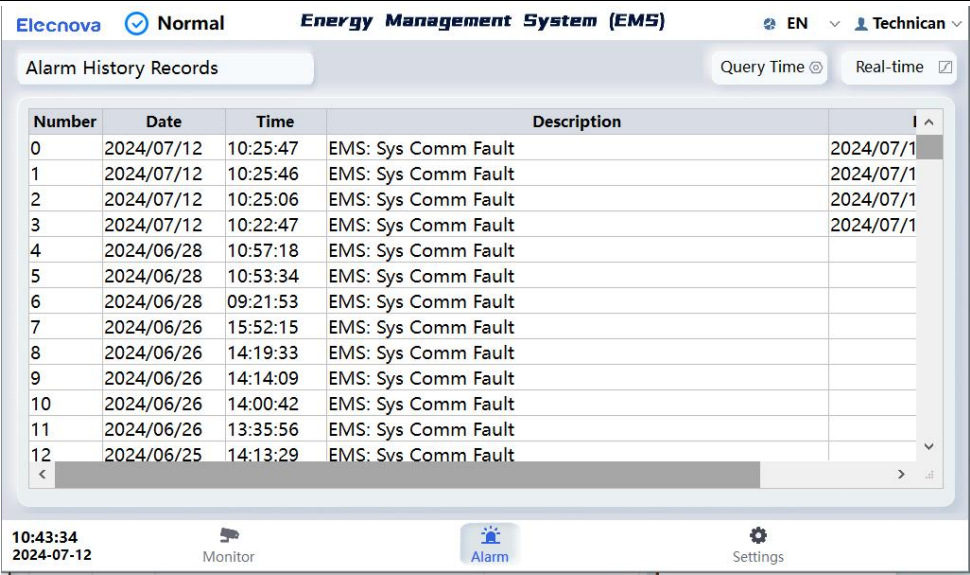


Figure 16

2.7 Setting

This interface is for password change, basic setting, buzzer & screen saver, restart operation, and equipment information. (Figure 17)

To enter the "Settings" interface, you need to log in to your account.

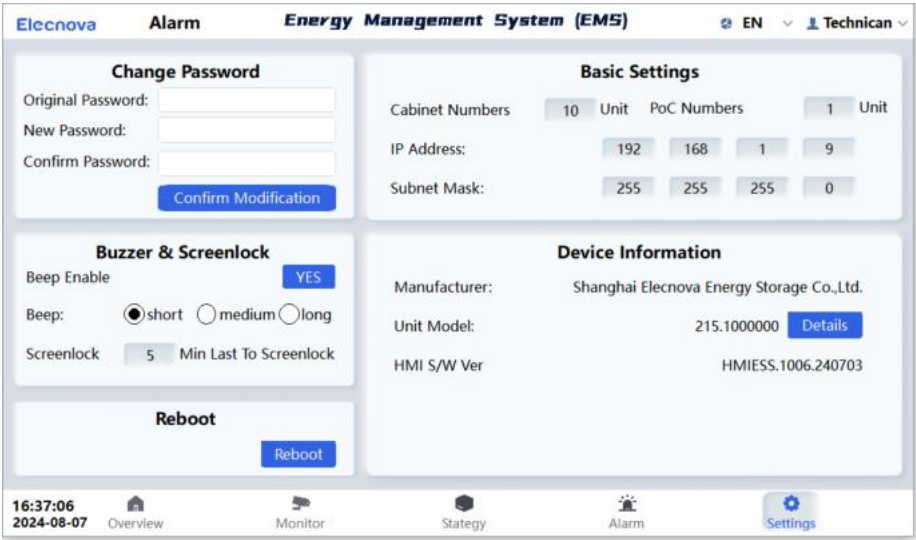


Figure 17

Password Change: Enter the original and new account passwords. The new password will become valid only after the original password is verified as correct.

Buzzer & Screen Saver: Set the alarm duration of the buzzer when an alarm occurs; when there is no operation on the HMI screen within the set time, the system will log out of the account automatically and enter the screen saver interface.

**Restart:** Click on "Restart Equipment" to automatically restart the HMI screen.

**Basic Setting:** Set the number of energy storage cabinets and the number of grid-tied points.

**Equipment Information:** Display the manufacturer information, equipment model, and software version of the energy storage system.