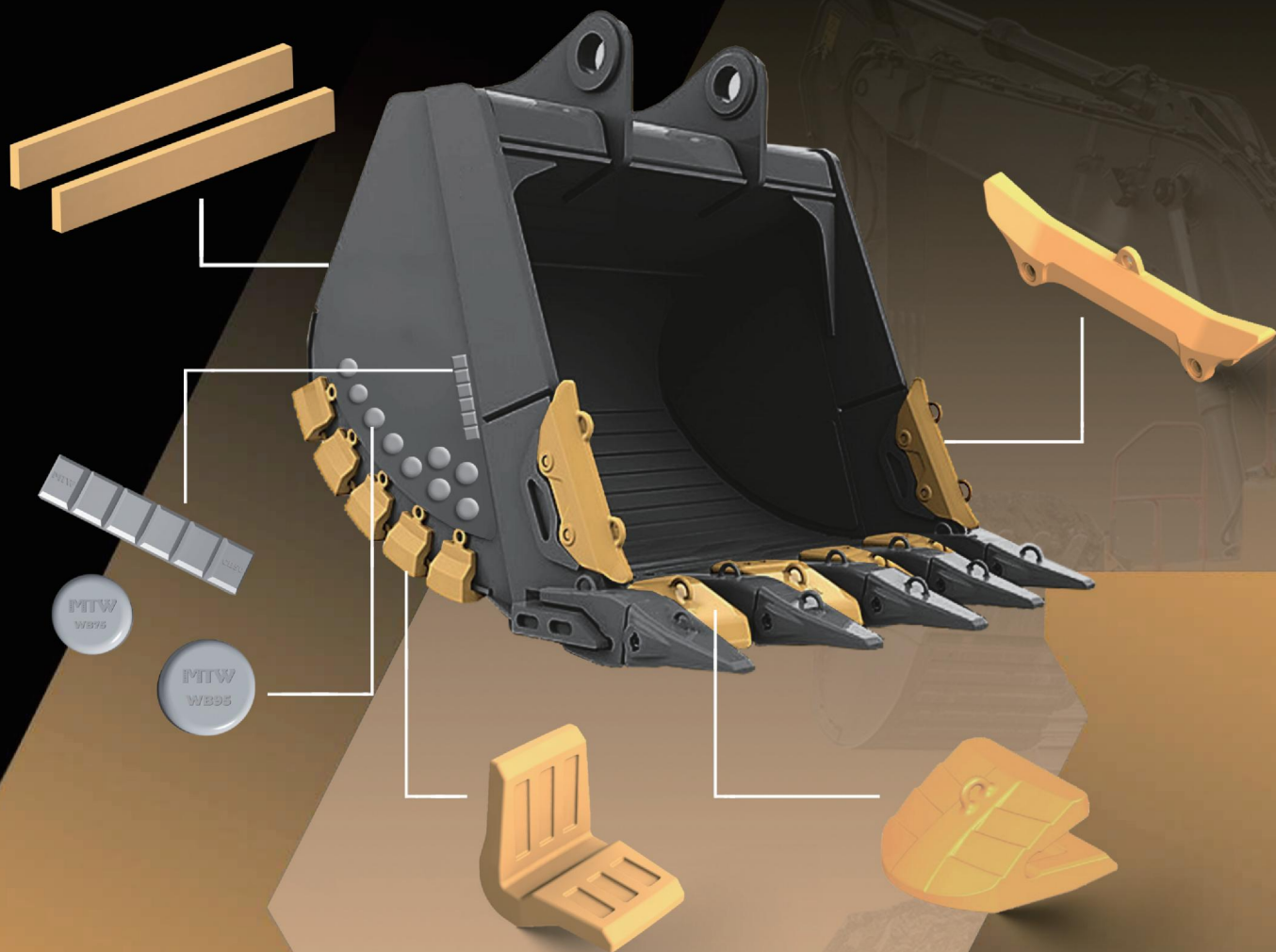


MTW



Max Toughness
Withstand More

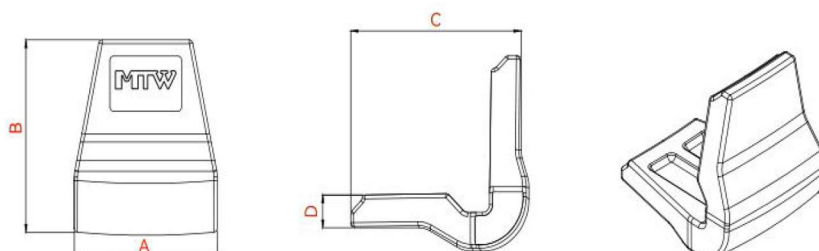
以坚韧
行更远

BUCKET PROTECTION

WELD ON HEEL SHROUDS



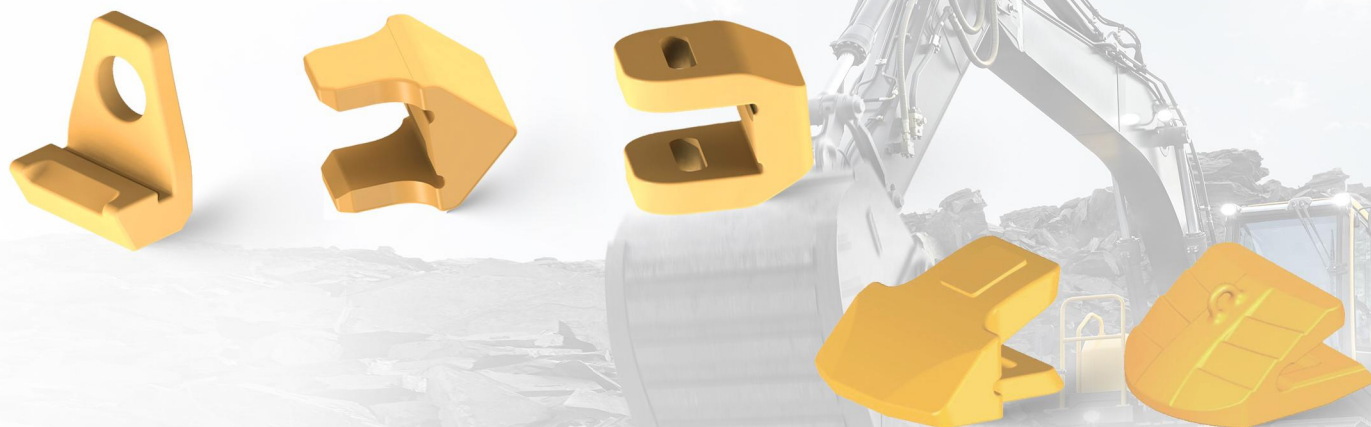
Weld On Heel Shrouds							
Part Number	Type	Description	Weight(KGS)	A(mm)	B(mm)	C(mm)	D(mm)
1571019	Straight	395、994	30.5	248.9	269.9	231.1	30.5
1571027	Curved	390、992、6015B	27.4	248.6	269.8	231.1	30.5
1386551	Curved	365、374、988、990	12.3	175.2	206.4	174.8	25.4
ES6697-4	Curved	20-30tons	24.0	188.0	250.0	145.7	19.4
ES6697-3	Curved	30-40tons	14.0	190.0	200.0	102.1	16.6
ES6697-2	Curved	50-60tons	10.2	188.0	175.0	100.6	14.0
HS140-110	Curved	20-30tons	4.5	110.0	141.5	139.8	20.9
HS175-140	Curved	40-60tons	10.5	140.0	178.0	168.1	34.6
HS230-190	Curved	75-90tons	24.0	200.0	245.2	238.0	41.9



*For parts not listed on above page, please send to sales@mtw-blades.com for more information

*All identities and trademarks referred to in this brochure are only for the purpose of identification, comparison and description.

LIP SHROUDS



Right-angled LIP Shrouds					
No	Thickness mm (cutting edge)	Part Number	Unit Weight(KGS)	Typical excavator tonnage	Remark
1	30	20X-70-14550	1.9	10	Unilateral type
2	40	FB5170	3.4	20	Unilateral type
3	40	HK40	2.9	20	Bilateral type
4	50	HK50	4.0	30	Bilateral type
5	60	HK60	5.6	40	Bilateral type
6	70	HK70	20.0	45-50	Bilateral type
Oblique angled LIP Shrouds					
No	Thickness mm (cutting edge)	Oblique angle a°	Part Number	Unit Weight(KGS)	Typical excavator tonnage
1	50	23°	SF50LS	8.9	30
2	60	23°	F60LS	21.5	45-50
3	80	30°	WS200	18.8	65-75
4	90	30°	WS300	28.0	75-90

SIDERBAR PROTECTOR



Sidebar Protector				
	No	Part Number	Description	Unit Weight(KGS)
	1	1250800	994,994D,994F,Modu Excavator	58.5
	2	9J9600	988B,988F,988G,988A	17.0
	3	1U0470	900,992C,992D,992G,993K,990,992K	21.4
	4	1122489	B,S,C,D	16.5
	5	1662877	988G,988,980C,980H	21.1
	6	8J4143	992B,992C,(922 Modulok)	20.3
	7	1250800	D11(Carridozer)	58.5
	8	1U0470	350,375/375HX HDR	21.4
	9	8J4143	330B,325B,322B,320B	20.3
	10	1662877	E,F,C,V	21.1

*For parts not listed on above page, please send to sales@mtw-blades.com for more information

*All identities and trademarks referred to in this brochure are only for the purpose of identification, comparison and description.



Chocky Bar

Part number	Description	Dimension
CB25	Chocky Bar	240X25X23
CB40	Chocky Bar	240X40X23
CB50	Chocky Bar	240X50X23
CB60	Chocky Bar	240X60X23
CB65	Chocky Bar	240X65X23
CB80	Chocky Bar	240X80X23
CB90	Chocky Bar	240X90X23
CB100	Chocky Bar	240X100X23
CB130	Chocky Bar	240X130X23
CB150	Chocky Bar	240X150X23

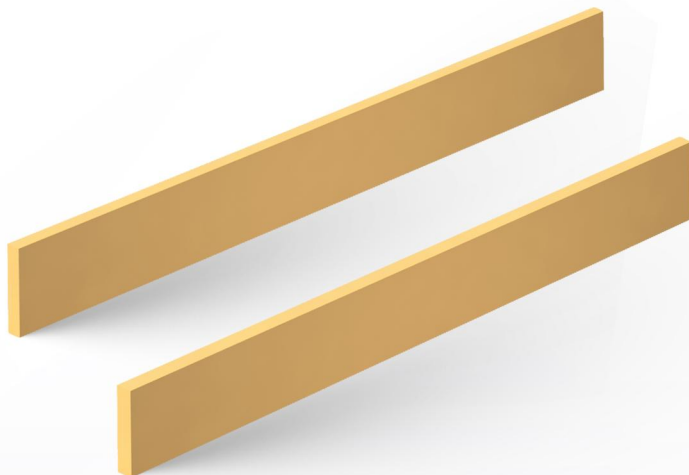
Wear Button

Part number	Description	Dimension
WB60	Wear Button	Φ60X27
WB75	Wear Button	Φ75X27
WB90	Wear Button	Φ90X27
WB110	Wear Button	Φ110X32
WB115	Wear Button	Φ115X32
WB150	Wear Button	Φ150X41

*For parts not listed on above page, please send to sales@mtw-blades.com for more information

*All identities and trademarks referred to in this brochure are only for the purpose of identification, comparison and description.

LONG WEAR BARS



Long Wear Bars					
Part Number	Weight (kgs)	Thickness(mm)	Width(mm)	Length(mm)	Hardness
WBF 16X76X2896	27.4	16	76	2896	35-40 HRC
WBF 16X102X2896	36.6	16	102	2896	35-40 HRC
WBF 16X152X2896	54.9	16	152	2896	35-40 HRC
WBF 19X76X2896	33.0	19	76	2896	35-40 HRC
WBF 19X102X2896	44.0	19	102	2896	35-40 HRC
WBF 19X152X2896	66.1	19	152	2896	35-40 HRC
WBF 25X76X2896	43.9	25	76	2896	35-40 HRC
WBF 25X102X2896	58.5	25	102	2896	35-40 HRC
WBF 25X152X2896	87.8	25	152	2896	35-40 HRC
WBF 16X102X5791	73.2	16	102	5791	35-40 HRC
WBF 16X152X5791	109.8	16	152	5791	35-40 HRC
WBF 19X76X5791	87.8	19	76	5791	35-40 HRC
WBF 19X102X5791	117.1	19	102	5791	35-40 HRC
WBF 19X152X5791	132.2	19	152	5791	35-40 HRC
WBF 25X76X5791	87.8	25	76	5791	35-40 HRC
WBF 25X102X5791	117.1	25	102	5791	35-40 HRC
WBF 25X152X5791	175.6	25	152	5791	35-40 HRC

*For parts not listed on above page, please send to sales@mtw-blades.com for more information

*All identities and trademarks referred to in this brochure are only for the purpose of identification, comparison and description.



MTW

苏州明特威机械设备有限公司
MTW WEAR PARTS (SUZHOU) CO., LTD.

📍 苏州市高新区科鸿路1号金融小镇118幢
BUILDING 118, FINANCE TOWN, 1 KEHONG RD, SUZHOU, CHINA

✉ sales@mtw-blades.com

🌐 www.mtw-blades.com

