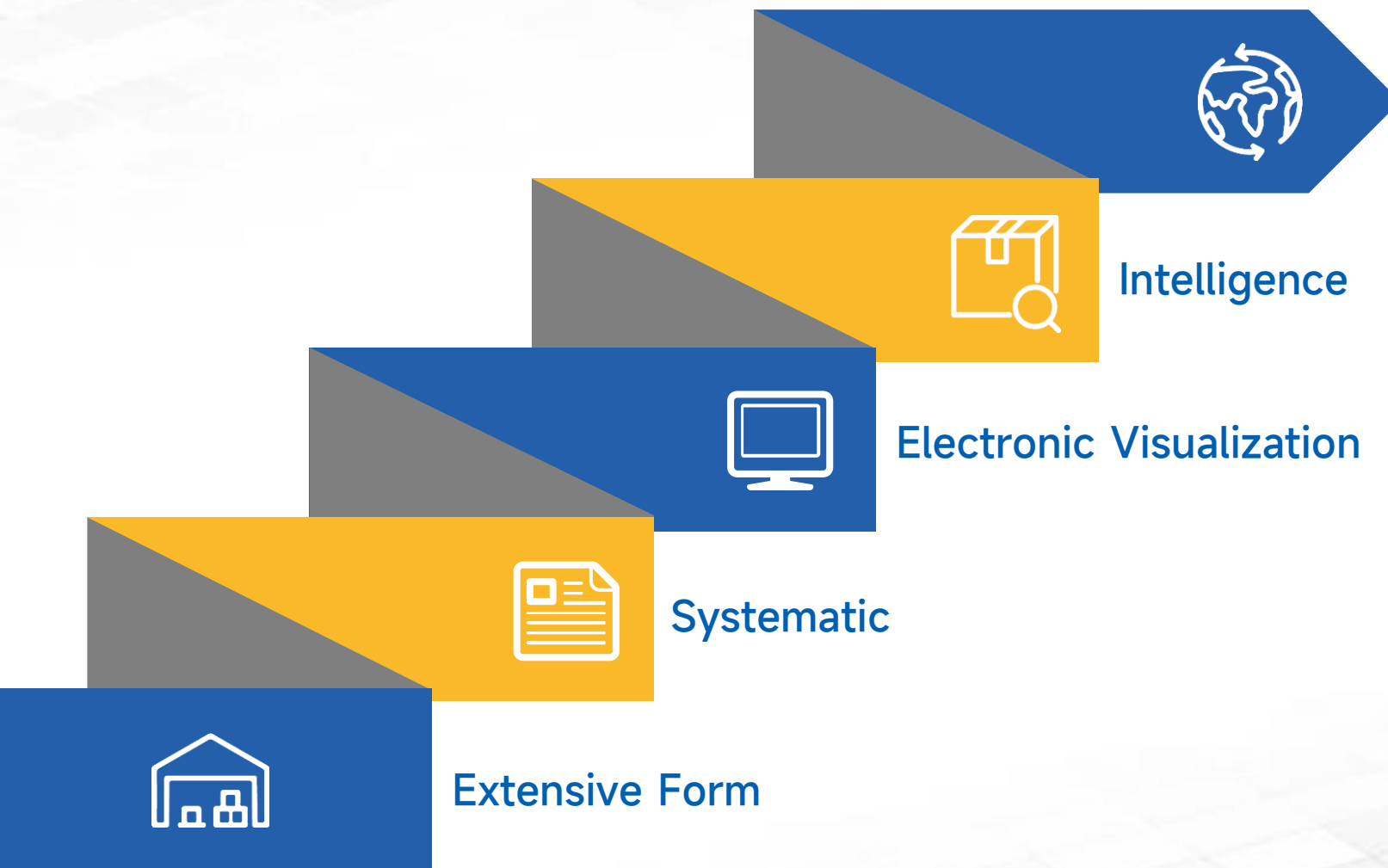


# WAREHOUSING AND LOGISTICS INDUSTRY APPLICATION SHARING



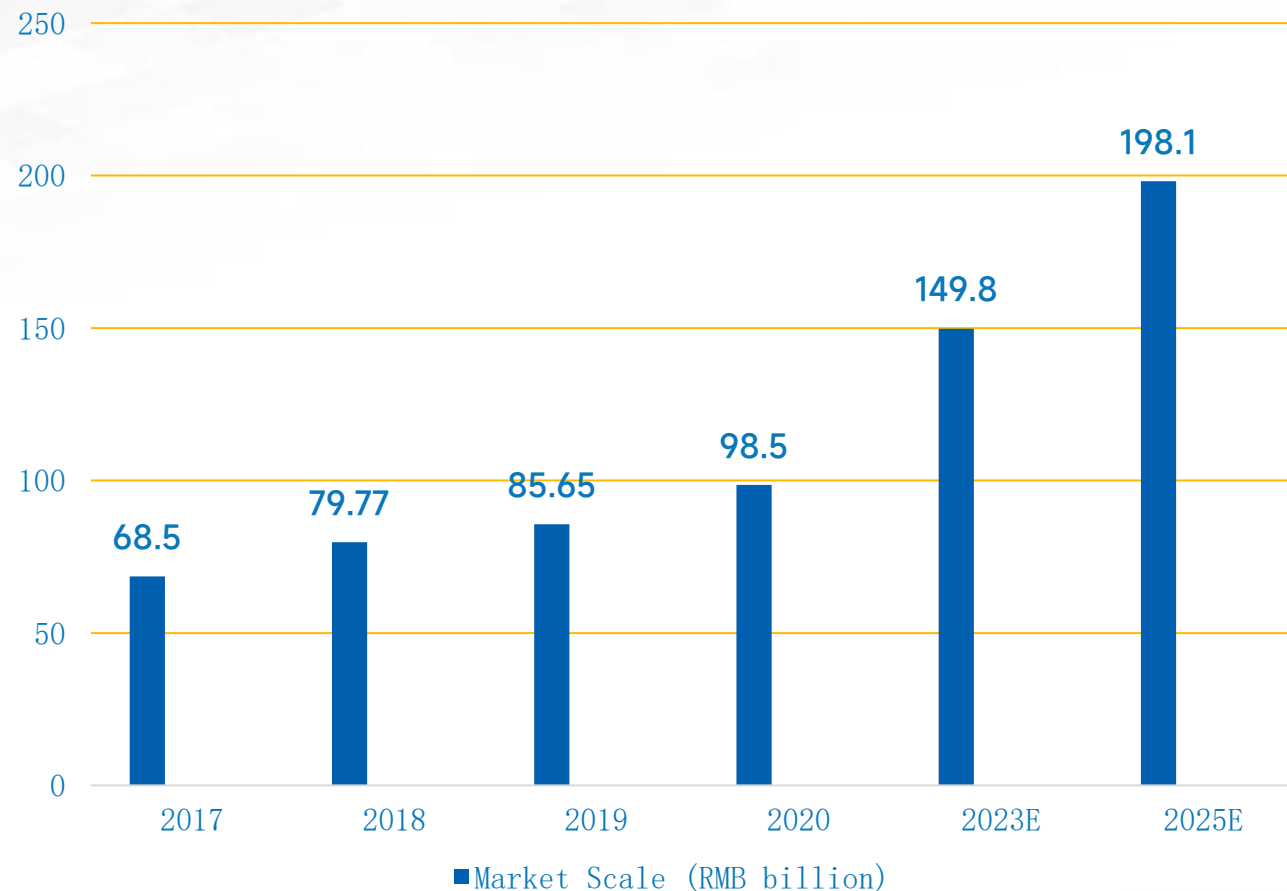
## Warehousing & logistics

Intelligent warehousing and logistics is to realize dynamic and visual management of every processing link in warehousing and logistics, to improve the intelligent analysis ability, decision-making and automatic operation ability, and optimize the operation efficiency through intelligent technical means such as intelligent hardware and software, Internet of Things, big data technology and so on.



## Rapid Growth

According to the data of GGII, the scale of intelligent warehousing market reached 98.5 billion yuan in 2020, and the compound annual growth rate from 2015 to 2020 was 17%. Although the macro-economy is under pressure, the Chinese "14th Five-Year Plan" places a high value on the logistics industry, and manufacturing industry seeks for high-quality development as well, which provides a huge market demand for the development of warehousing industry. The market scale is preliminarily estimated at 15% compound annual growth rate in 2020-2025, and it is expected to reach 198.1 billion yuan in 2025.



## Intelligent platform

Network layout

Data analysis

Industry insight

Deep synergy

Logistics big data and algorithms are applied to optimization and collaboration in supply chain network.

## Intelligent operation

Scheduling

Setting

Warehousing

Dispatch

Unified management and operation has been achieved by the information technological platform to control the whole process.

## Intelligent Distribution

Instock

storage

Picking

Packing

Picking

Outstock

Transport

Delivery

Every procedure in Supply chain from storage to distribution has been digitally transformed by different software and hardware tools, such as PDA, AGV robot.

## Warehouse Management

Instock  
Outstock

Stock-taking  
Picking

## Logistics Management

Vehicle  
Personnel

Loading/  
Unloading  
Item tracking

IoT

RFID

Code  
Scanning

RTLS

Fingerprint/ID Card

## Thinckin Solutions

Thinckin has a full set of rugged mobile computers and related solutions for warehousing and logistics, to realize a full digital operation mode, access data and information more accurate and timely, and improve warehousing turnover and logistics operation efficiency.

## Road Transport

## Warehouse management





In the traditional warehouse management, All the data-process in receiving goods, and picking is done manually which is time-consuming, low efficiency, possibly high error rate and high labor cost.



Recording often leads to the discrepancy of inventory and accounts due to various uncertain factors, and such large number of workload can't be completed in a short time.



Operation managers can not timely know about the real stock status of the warehouse, lowers the distribution and delivery efficiency and hinders right decision-making.



## H60T Rugged Handheld

5G

Big  
Screen

2D

fast  
charging

Portable

NFC

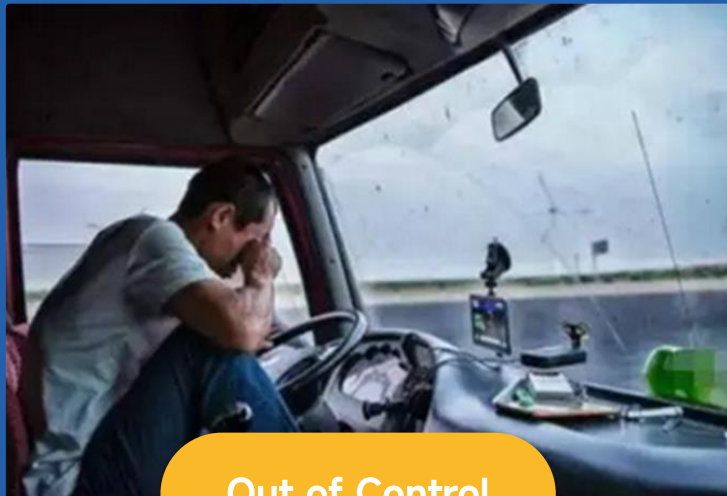
Barcode

Dual  
camera

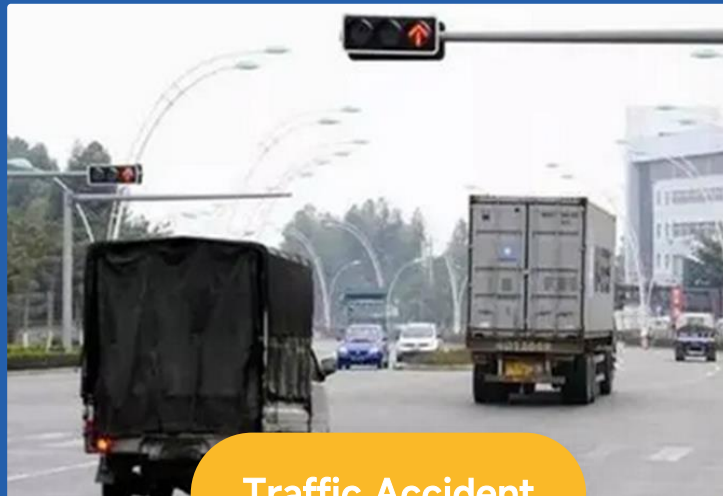
- NA/NSA dual-mode 5G communication
- 6" large screen, 2.5D display
- Integrated 2D scanning engine for data collection
- Front and rear camera





**Out of Control**

During the transportation, managers are unable to conduct real-time tracking, supervision and control of vehicles, goods, drivers' arrival and location.

**Traffic Accident**

Drivers often cause traffic accidents due to non-standard driving behavior, or damage the interests of the company due to the actual driver.

**Matching  
Confusion**

In the multi-person and multi-vehicle distribution, it is easy to have the confusion of driver and vehicle matching, which causes the inconvenience of vehicle and driver management.

## V10J Vehicle PC

N5100

700 Nits

4G

VESA

Intel

HD

GPS

Rich I/O

- Intel Jasper Lake N5100 CPU
- 10.1" screen, 700 nits high brightness
- Fast and reliable Wi-Fi, BT 5.0, 4G, and GPS/GLONASS/Beidou
- Multi-module and rich interfaces for extensive applications





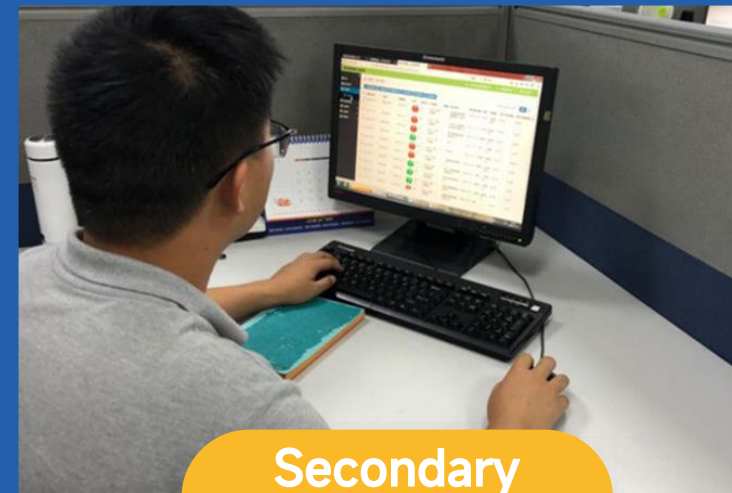
### Backlog

Due to the different shapes and sizes of packages, the staff cannot quickly and effectively assess the number of vehicles required for each loading of packages by visual inspection, which often results in the failure to deliver packages on time as agreed.



### Resource Consumption

When unloading, it is necessary to manually check the packages one by one, which requires a lot of manpower and time cost, leading to a great time-consuming and prone to human error.



### Secondary Entry

When there are problems and abnormal packages, they cannot be dealt with in time, and the packages that have been unloaded need to be manually entered into the logistics system twice.



## M10A Rugged Tablet

CPU

2D

I/O  
ports

IP65

Assess

Check

700 nits

Customized

- 12th generation Intel i5/i7 processor for demanding tasks
- Package checking and data transmission
- RJ45, DB9, USB2.0, and multi-modules
- **NFC optional**



## Nationally Renowned Brewer M10A+Vehicle Mount



### Product highlights

- 10.1" FHD IPS screen
- 1000 nits high brightness
- Wi-Fi 6 fast connection
- Rich I/O ports
- 2D barcode scanning
- Versatile accessories

### Case details

- Bright Sunlight readable
- Read the cargo labels
- Display the real stock status
- VESA mount support with vehicle mount



## Well-known Logistics Enterprise in Fujian China

### V10J Vehicle PC+Vehicle Mount

#### Product highlights

- VESA vehicle mount accessories
- Wi-Fi/BT/4G LTE
- GPS/GLONASS/Beidou
- Battery-free solution
- IP65 waterproof,



#### Case details

- Forklift mounting
- Connect to scanner with BT
- Scan the labels
- Locate the goods with real-time location service





## Well-Known Sports Brand

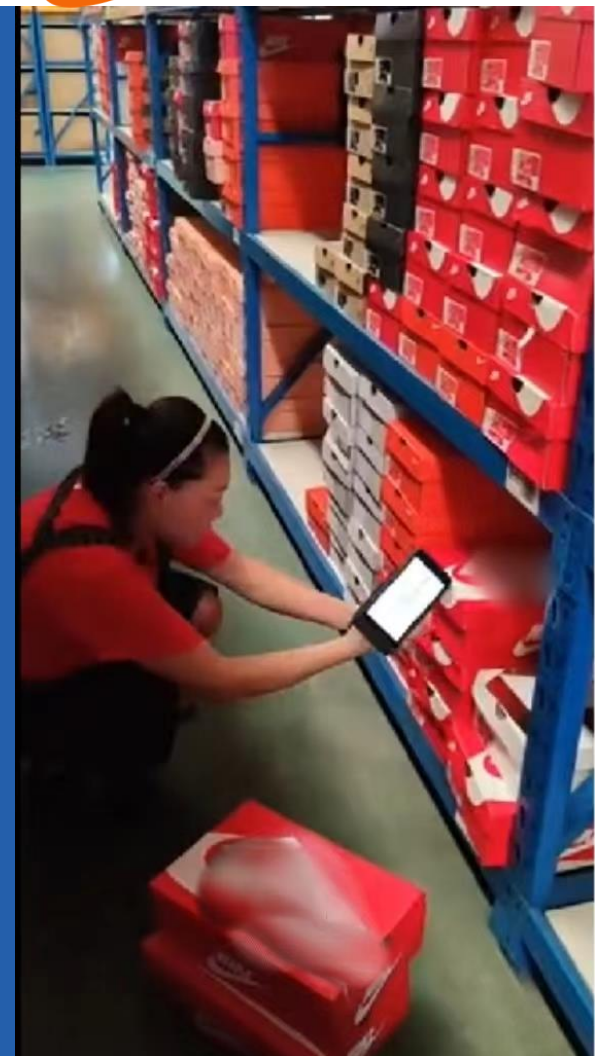
H60T Rugged Handheld+Handstrap+Lanyard

### Product highlight

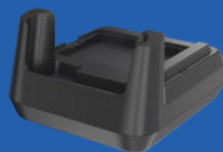
- 6" large size screen
- Android 12 OS (GMS)
- NA/NSA dual-mode 5G communication
- Code-scanning
- Support pistol grip

### Case details

- Rich accessories
- Removable battery
- 1D/2D bar code scanning
- Manage complete workflow







Docking  
charger



Hand holder



Detachable  
battery



Hand-strap



Tempered  
film



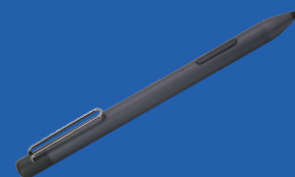
Car Charge



Functional adapter



Carry handle



Stylus



Vehicle mount



Adapter



THANKS FOR  
WATCHING