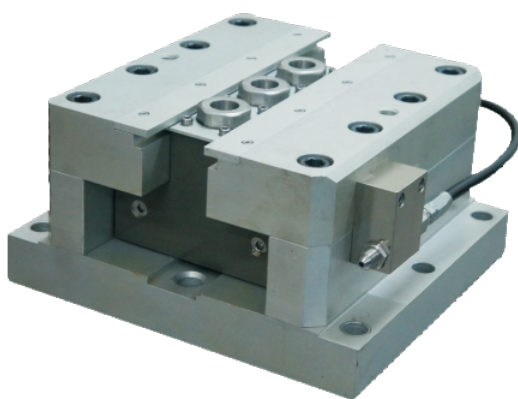
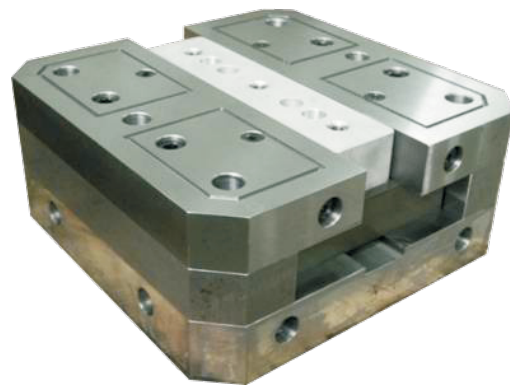
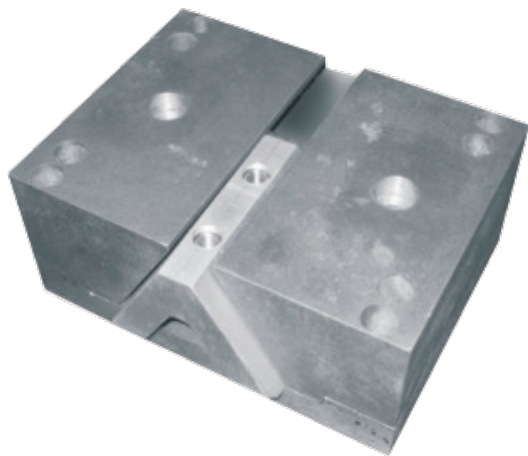




Technical Parameters

Electro-dynamic Shaker

Slip Table



According to the type of guidance rail, S series slip table can be divided SV, ST and STL shaped slip table.

- SV slip tables design with V-groove bearings, have the low-pressure hydraulics housed within the mono-base slip table. This design offers lower cost with higher reliability and lower maintenance.
- ST slip tables design with T-slot bearings, have higher over-turning moment and cross-axial restraint and include a stand-alone external) medium-pressure hydraulic power supply.
- STL slip tables design with T-slot bearings and long-stroke, have higher over-turning moment and cross-axial restraint and include a stand-alone (external) high-pressure hydraulic power supply, but need higher precision machining and installation.

	Slip Table			Motion Part Mass (kg)		Maximum Working	
Scale	Dimension (mm)	Rail Type	Test Payload (kg)			Frequency(Hz)	
				Aluminum Alloy	Magnesium Alloy	Sine	Random
303	300×300×25	SV	100	9	7	2000	2000
404	400×400×25		150	14	9	2000	
	400×400×45		200	23	16	2000	
505	500×500×25		150	22	16	2000	
	500×500×45		300	36	25	2000	
606	600×600×25		200	30	21	2000	
	600×600×45		300	50	34	2000	
707	700×700×45		SV/ST	300/3000	66/90	44/65	
808	800×800×45	SV/ST/STL	400/3000/6000	85/110/102	56/81/73	1500	
909	900×900×45	SV/ST/STL	400/3000/6000	107/132/124	70/95/87	1500	
1010	1000×1000×50	SV/ST/STL	500/6000/10000	149/166/139	99/121/94	1250	
1212	1200×1200×50	SV/ST/STL	500/6000/12000	210/254/227	138/181/154	1250	
1515	1500×1500×50	SV/ST/STL	800/10000/15000	328/408/360	215/292/244	1000	
1818	1800×1800×50	SV/ST/STL	1000/10000/15000	466/553/542	304/348/337	800	
2020	2000×2000×60	SV/ST/STL	1000/15000/20000	685/875/863	445/598/586	650	
2525	2500×2500×60	ST/STL	20000/30000	1214/1195	909/890	500	

Note:

1. Mass of motion parts doesn't include armature and connection parts.
2. Tail type:
SV--inversed V-shape oil-film rail;
ST--T-shape static-pressure rail;
STL--T-shape long-stroke static-pressure rail;
3. Slip table model number consists of rail type and table dimension, e.g. ST-1010 means T-shape static-pressure rail, table size 1000*1000*50mm horizontal slip table.
4. 5% error is permitted for motion part mass and maximum working frequency.
5. Parameters are subject to change upon request.