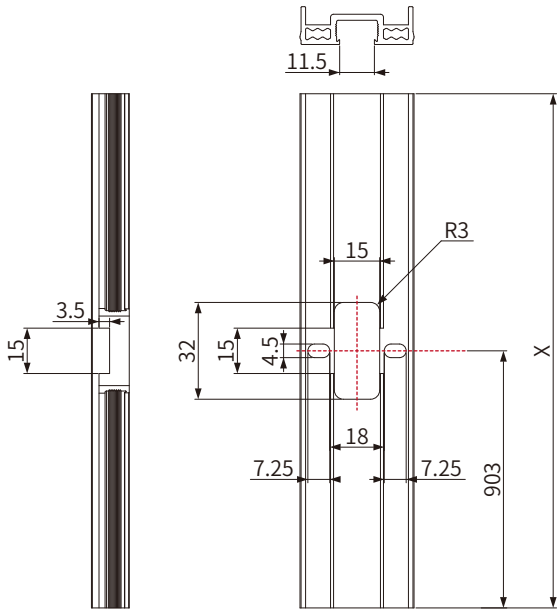


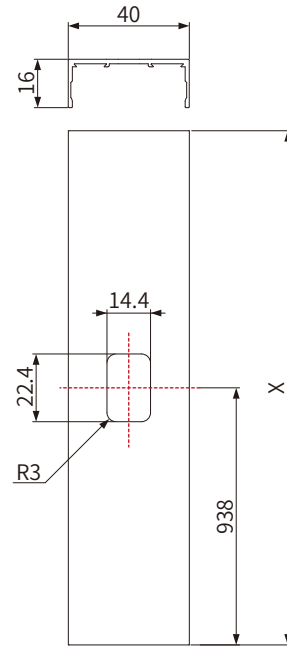
opk[®] Perfect Swing Door Handle Lock-with Push and twist-back Lock-Installation Instruction

Machining parameter

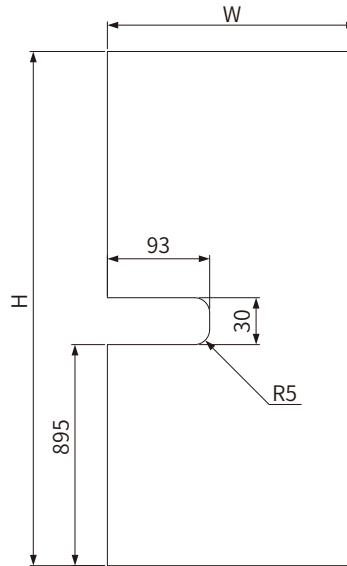
40 Door fan install the 75 Lock body bore hole drawing



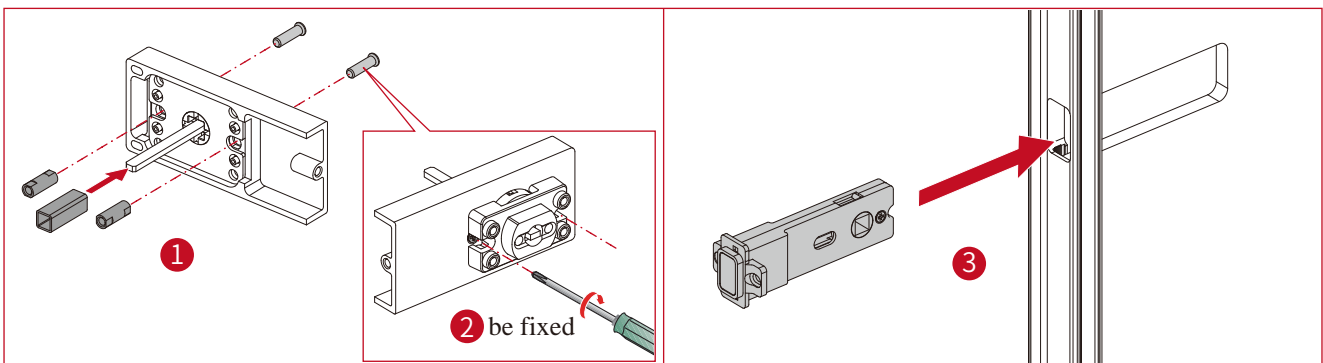
40 Door fan Sealing plate bore hole drawing



Glass bore hole drawing

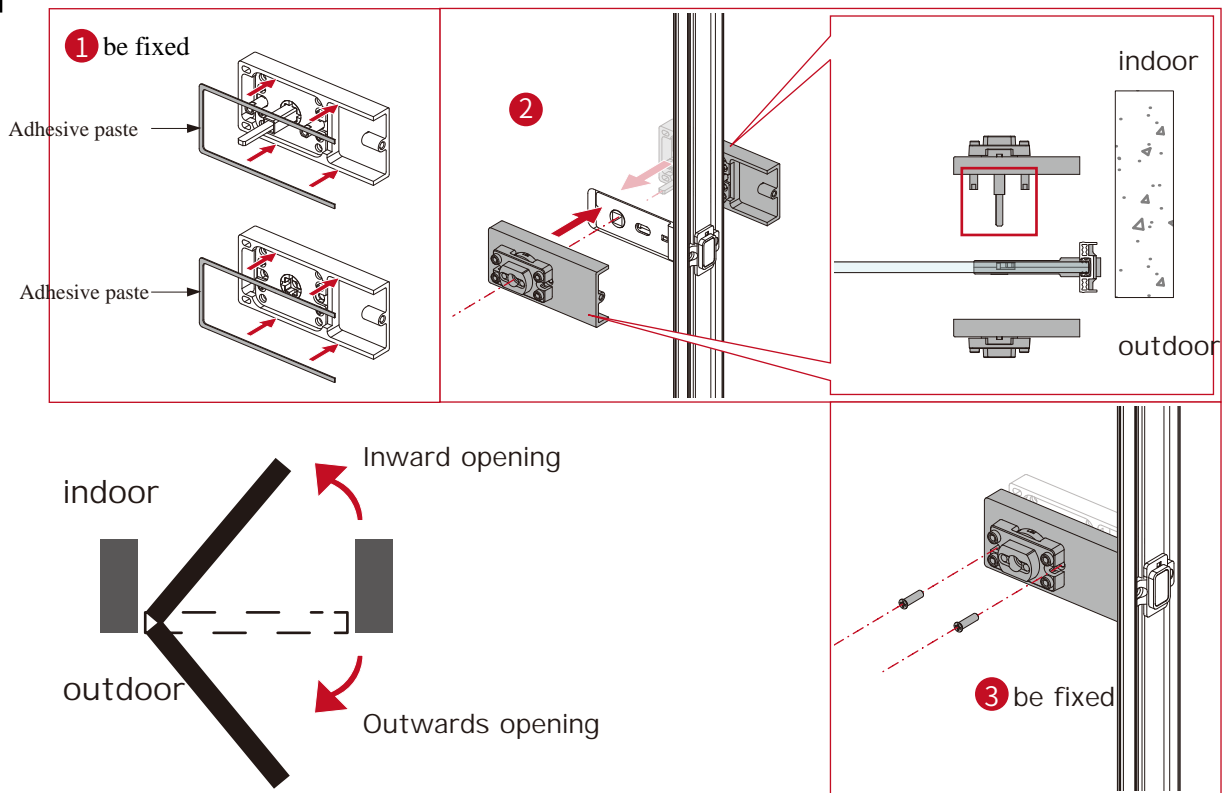


1-1 Install the Lock Body

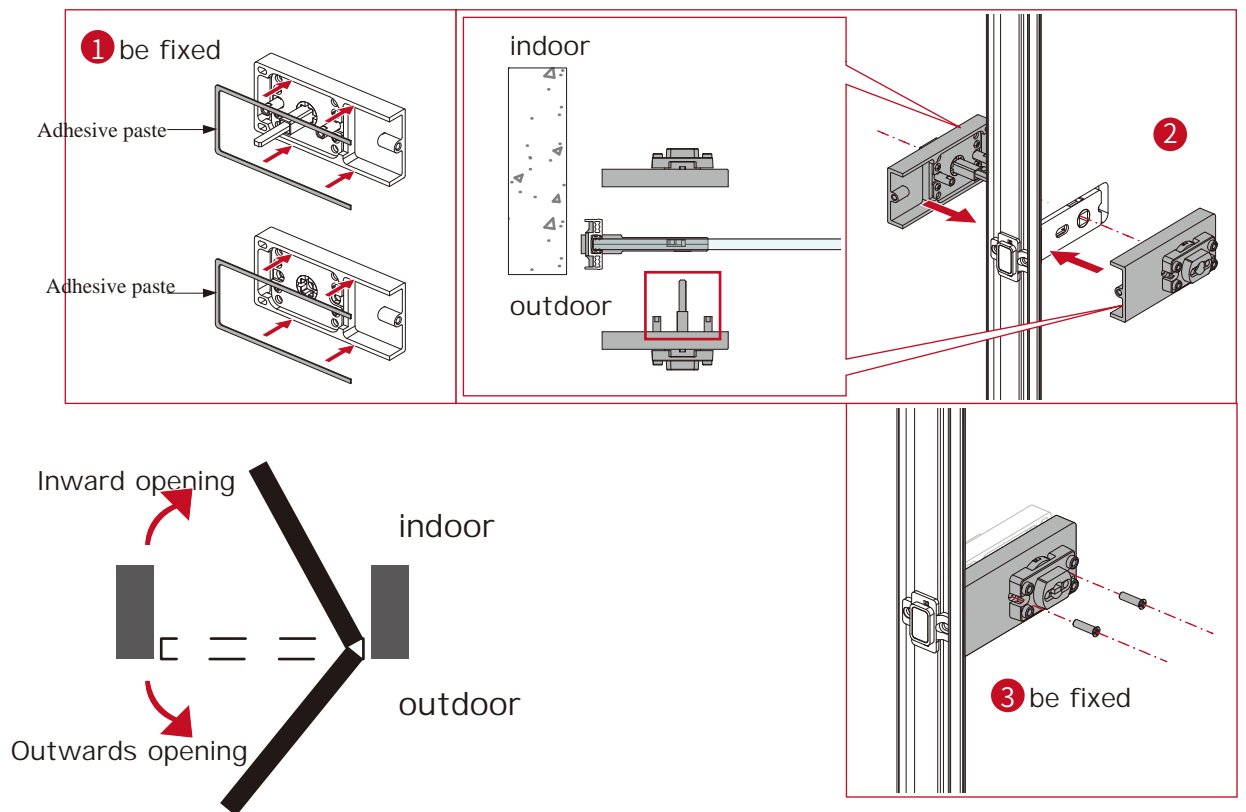


1-2 Install the Lock Body

Left Open

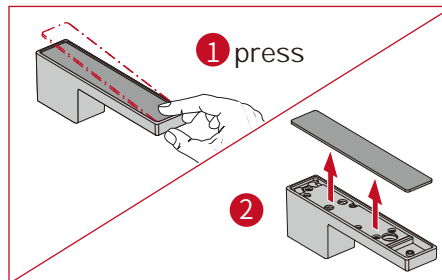
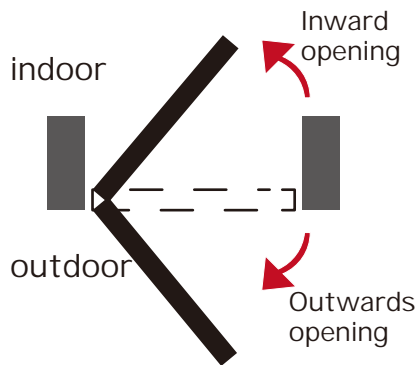


Right Open

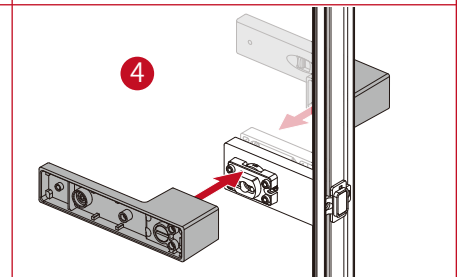
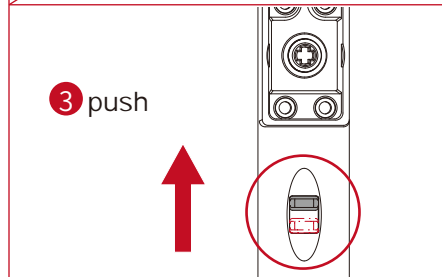
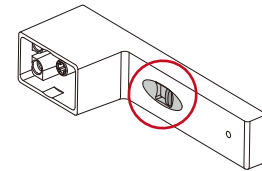


2 Install the Handle Lock with Push and twist-back

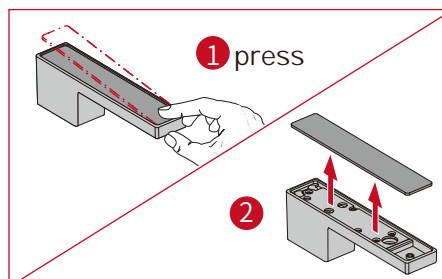
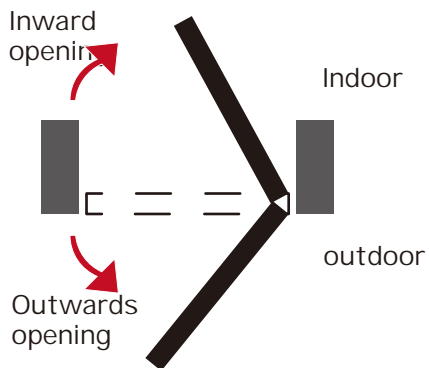
Left Open



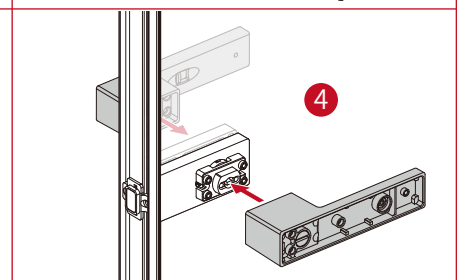
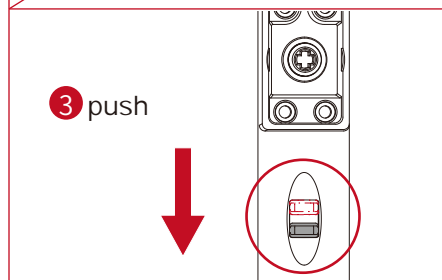
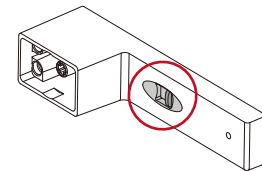
! Doorknobs with this button must be installed indoors



Right Open



! Doorknobs with this button must be installed indoors



3 Fix the Door Handle

