

System analysis

- Sliding roller system
- The swing door Accessories set

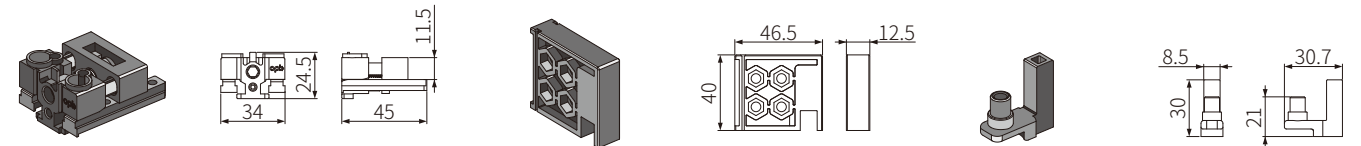
Perfect A60 swing door set	Inner Packing Specification	Outer Packing Specification	SAP code
	1 set/box	40 boxes/case	CA470001-001



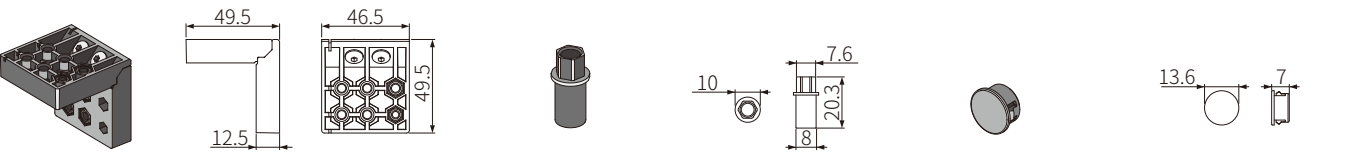
Single door width	≥300mm
Single door thickness	40mm
Suitable for Glass Thickness	8~11mm
Single door load bearing	≤80kg

Order instructions

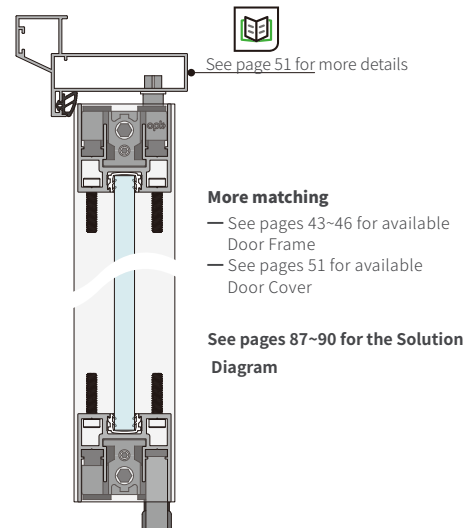
- Please order the profiles and tracks separately
- apply to left-Open and right-Open



Product name	Quantity	SAP code	Product name	Quantity	SAP code	Product name	Quantity	SAP code
Heaven and earth hinge	x2	CA991631-001	Base fixing block	x1	P0107-011	Hinge base	x1	CA991633-001



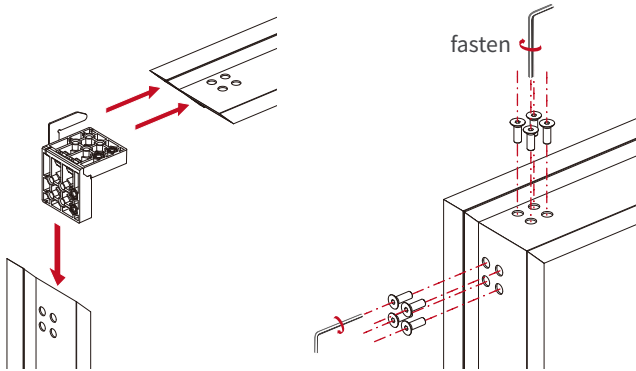
Product name	Quantity	SAP code	Product name	Quantity	SAP code	Product name	Quantity	SAP code
Injection molding corner code	x2	CA991634-001	apical axis	x1	P0194-001	Screw hole decorative cover	x10	P0191-005



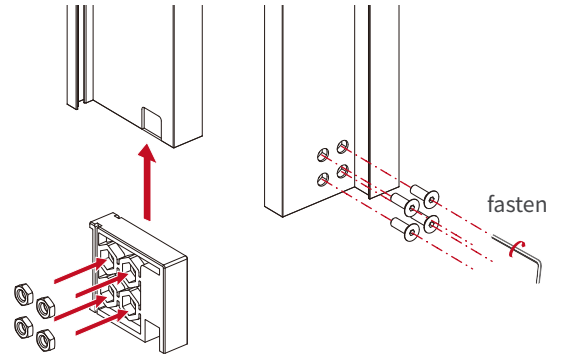
System analysis

- Sliding roller system
- The Installation Schematic of Swing door

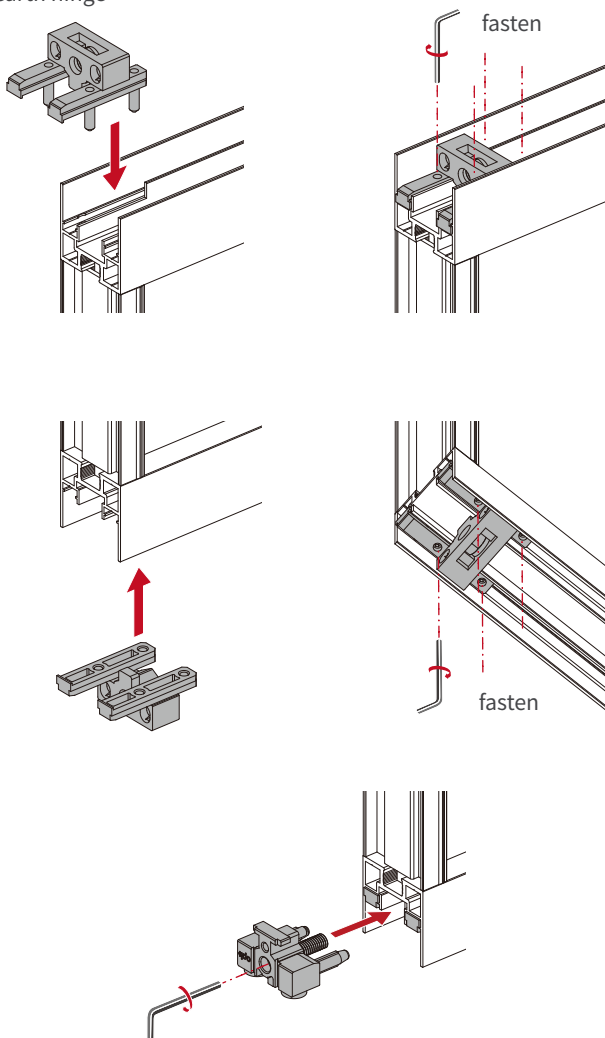
Install injection molding corner code



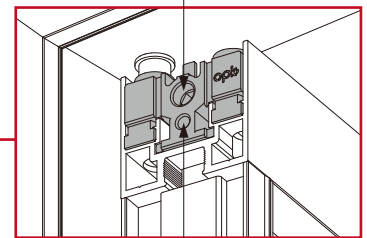
Install the base fixer



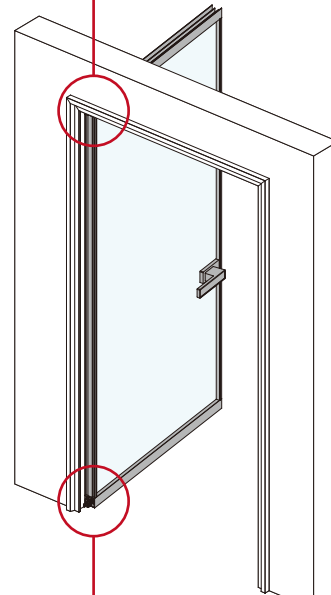
install heaven and earth hinge



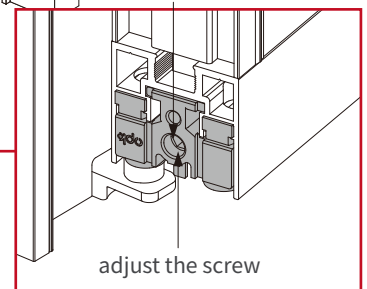
adjust the screw



fix the screw

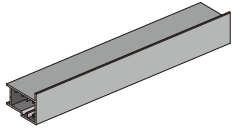


fix the screw



System analysis

— Door cover system

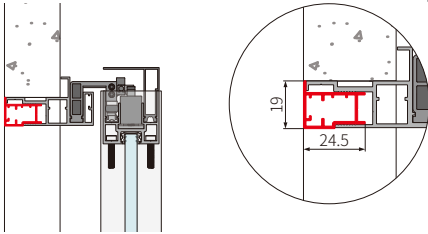


Technical Overview

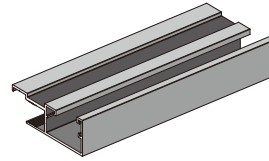
- Meter Weight:0.24kg/m
- Material:Aluminum Alloy
- Surface Treatment:Enamelled copper/Cypress grey/Titanium void grey
- Length:6000mm

Usage Instructions

- apply to the invisible door



Product name	Model Number
the invisible door half-closing in	OPK-A342

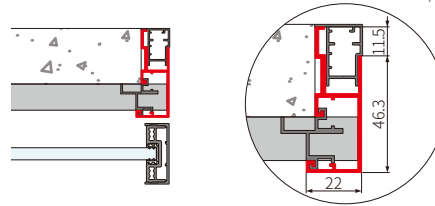


Technical Overview

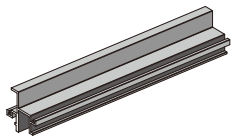
- Meter Weight:0.53kg/m
- Material:Aluminum Alloy
- Surface Treatment:Enamelled copper/Cypress grey/Titanium void grey
- Length:6000mm

Usage Instructions

- apply to the invisible door



Product name	Model Number
the invisible door mullion closing-in door cover (outside)	OPK-A340

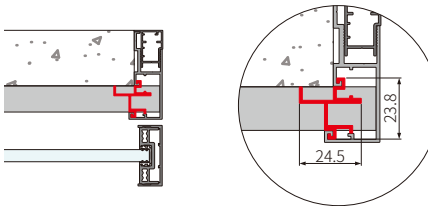


Technical Overview

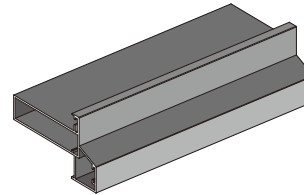
- Meter Weight:0.26kg/m
- Material:Aluminum Alloy
- Surface Treatment:Enamelled copper/Cypress grey/Titanium void grey
- Length:6000mm

Usage Instructions

- apply to the invisible door



Product name	Model Number
the invisible door mullion closing-in door cover (inside)	OPK-A341

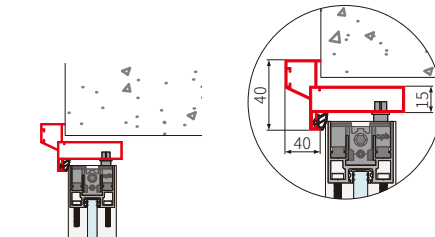


Technical Overview

- Meter Weight:0.74kg/m
- Material:Aluminum Alloy
- Surface Treatment:Enamelled copper/Cypress grey/Titanium void grey
- Length:6000mm

Usage Instructions

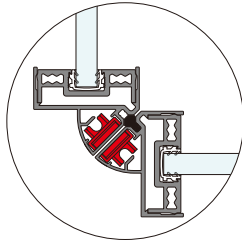
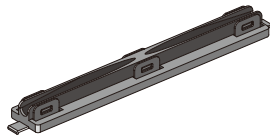
- apply to the swing door



Product name	Model Number
the swing door outside closing and inside open door cover	OPK-A323

System analysis

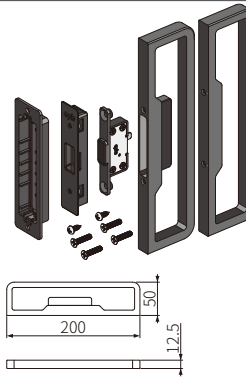
- Auxiliary accessories system
- Door frame auxiliary accessories



Technical overview
—Material: Iron + plastic
—Surface Treatment: Galvanized sheet + iron ash

Usage Instruction
— apply to Right angle synchronized door as door stopper

Product name	Inner Packing Specification	Outer Packing Specification	Model Number	SAP code
Right angle synchronized Magnetic absorption	25 set/box	500 Sets / Carton	OPK-A512	648457

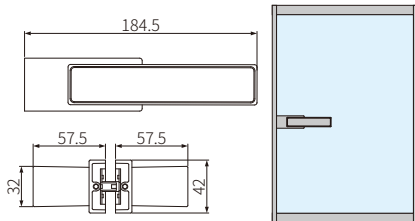
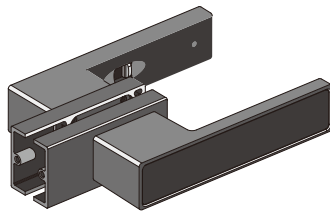


Technical overview
—Material: Aluminum Alloy
—Surface Treatment:

- Perfect metal black
- Perfect porcelain Swimming Ash
- Perfect Mocaffine
- Perfect moonlight grey

Usage Instruction
— Used for sliding door locks

Product name	Inner Packing Specification	Outer Packing Specification	Model Number	SAP code	
Perfect Magnetic Suction lock (square type)	Perfect Mocaffine	1 set/box	40 boxes/case	OPK-A531	CA450001-001
	Perfect metal black	1 set/box	40 boxes/case	OPK-A531	CA450001-002
	Perfect porcelain Swimming Ash	1 set/box	40 boxes/case	OPK-A531	CA450001-003
	Perfect moonlight grey	1 set/box	40 boxes/case	OPK-A531	CA450001-004

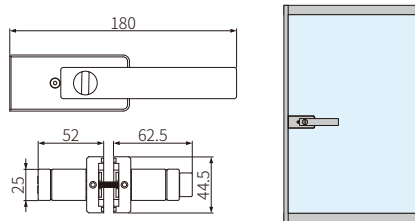
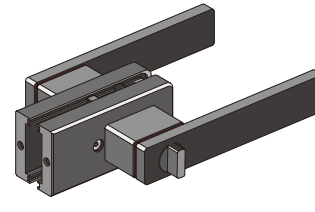


Technical overview
—Material: Aluminum Alloy
—Surface Treatment:

- Perfect metal black
- Perfect porcelain Swimming Ash
- Perfect Mocaffine
- Perfect moonlight grey

Usage Instruction
— apply to the swing door

Product name	Inner Packing Specification	Outer Packing Specification	Model Number	SAP code	
HandleLock (with push and twist backlock)	Perfect porcelain Swimming Ash	1 set/box	24 boxes/case	OPK-A537	CA450004-001
	Perfect Mocaffine	1 set/box	24 boxes/case	OPK-A537	CA450004-002
	Perfect metal black	1 set/box	24 boxes/case	OPK-A537	CA450004-003
	Perfect moonlight grey	1 set/box	24 boxes/case	OPK-A537	CA450004-004

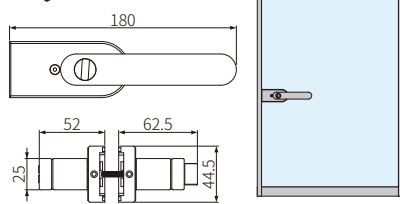
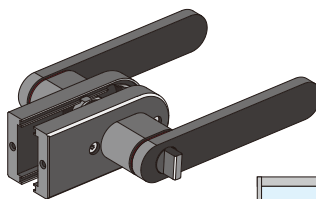


Technical overview
—Material: Aluminum Alloy
—Surface Treatment:

- Perfect metal black
- Perfect porcelain Swimming Ash
- Perfect Mocaffine
- Perfect moonlight grey

Usage Instruction
— apply to the swing door

Product name	Inner Packing Specification	Outer Packing Specification	Model Number	SAP code	
HandleLock (square type)	Perfect porcelain Swimming Ash	1 set/box	24 boxes/case	OPK-A529	CA450002-001
	Perfect Mocaffine	1 set/box	24 boxes/case	OPK-A529	CA450002-002
	Perfect metal black	1 set/box	24 boxes/case	OPK-A529	CA450002-003
	Perfect moonlight grey	1 set/box	24 boxes/case	OPK-A529	CA450002-004



Technical overview
—Material: Aluminum Alloy
—Surface Treatment:

- Perfect metal black
- Perfect porcelain Swimming Ash
- Perfect Mocaffine
- Perfect moonlight grey

Usage Instruction
— apply to the swing door

Product name	Inner Packing Specification	Outer Packing Specification	Model Number	SAP code	
HandleLock (circular type)	Perfect porcelain Swimming Ash	1 set/box	24 boxes/case	OPK-A530	CA450003-001
	Perfect Mocaffine	1 set/box	24 boxes/case	OPK-A530	CA450003-002
	Perfect metal black	1 set/box	24 boxes/case	OPK-A530	CA450003-003
	Perfect moonlight grey	1 set/box	24 boxes/case	OPK-A530	CA450003-004

Use technology to perfect life, And to make industry-benign sustainable development

Application solution

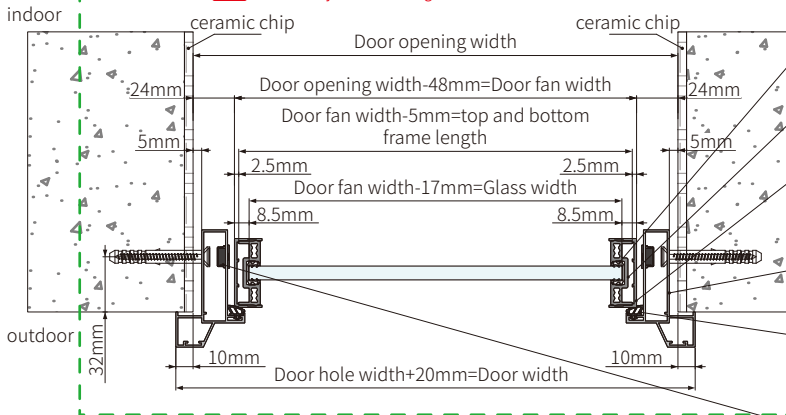
- The swing door
- Half door cover



Door Opening Top View

Door hole door fan width minus ruler rule

! Theoretical parameters only for reference, and the accuracy and error are adjusted according to the actual situation



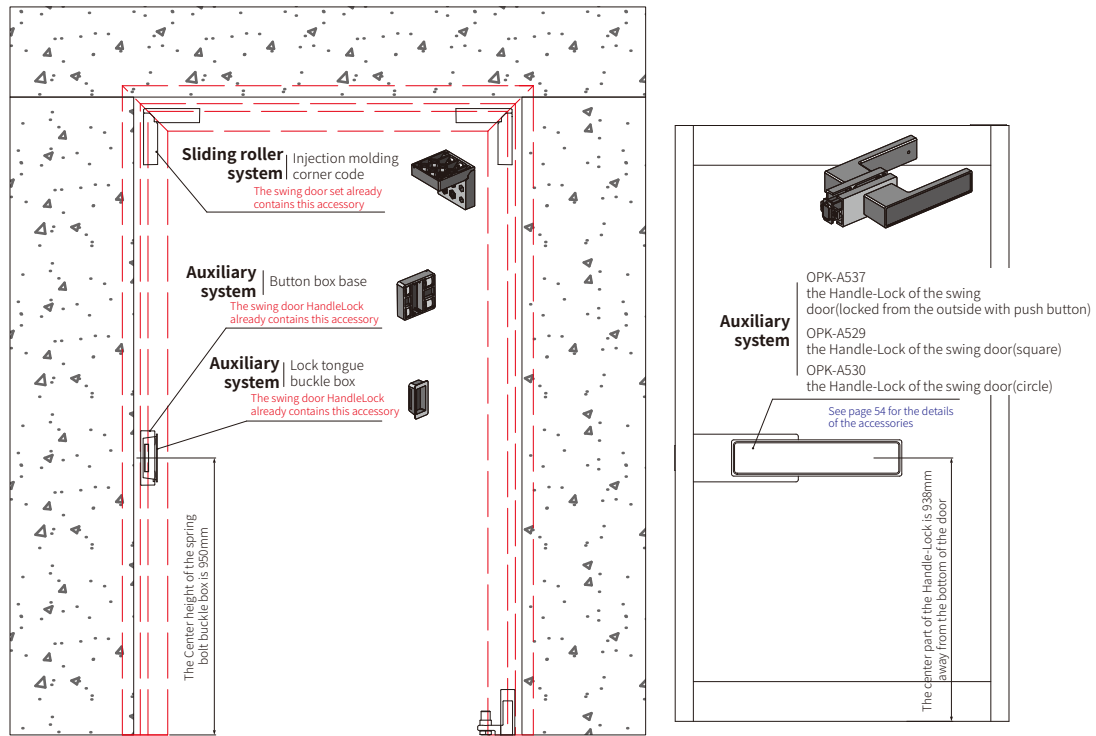
See page 53 for the details of the accessories

Rubber Strip System	OPK-A408 8mm Glass rubber strips (for Single Glass)	OPK-A409 9mm Glass rubber strips (4mm+4mm thick laminated glass)	OPK-A410 10mm Glass rubber strips (for Single Glass)	No glue strip 11mm (5mm+5mm thick laminated glass)
Door Frame System	OPK-A202-40 40 Door frame-Vertical Frame(inside)			See page 43 for the details of the accessories
Door Frame System	OPK-A203-40 40 Door frame-Vertical Frame(outside)			See page 43 for the details of the accessories
Door cover system	OPK-A323 the swing door outside closing and inside open door cover			See page 51 for the details of the accessories
Rubber Strip System	OPK-A416 The buffer rubber strip of the Swing door			See page 55 for the details of the accessories
Sliding roller system	crew hole decorative cover The swing door set already contains this accessory			See page 37 for the details of the accessories

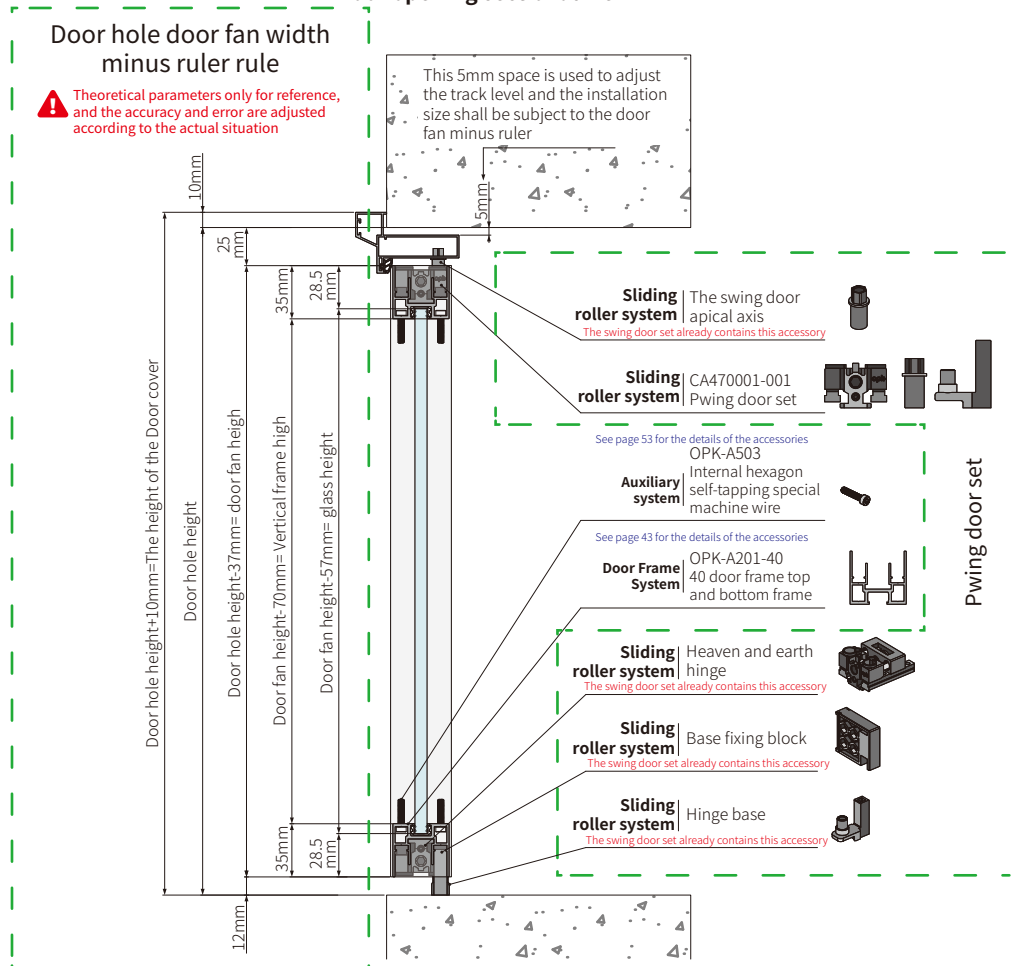
Application solution

- The swing door
- Half door cover

Door opening front view



Door opening sectional view

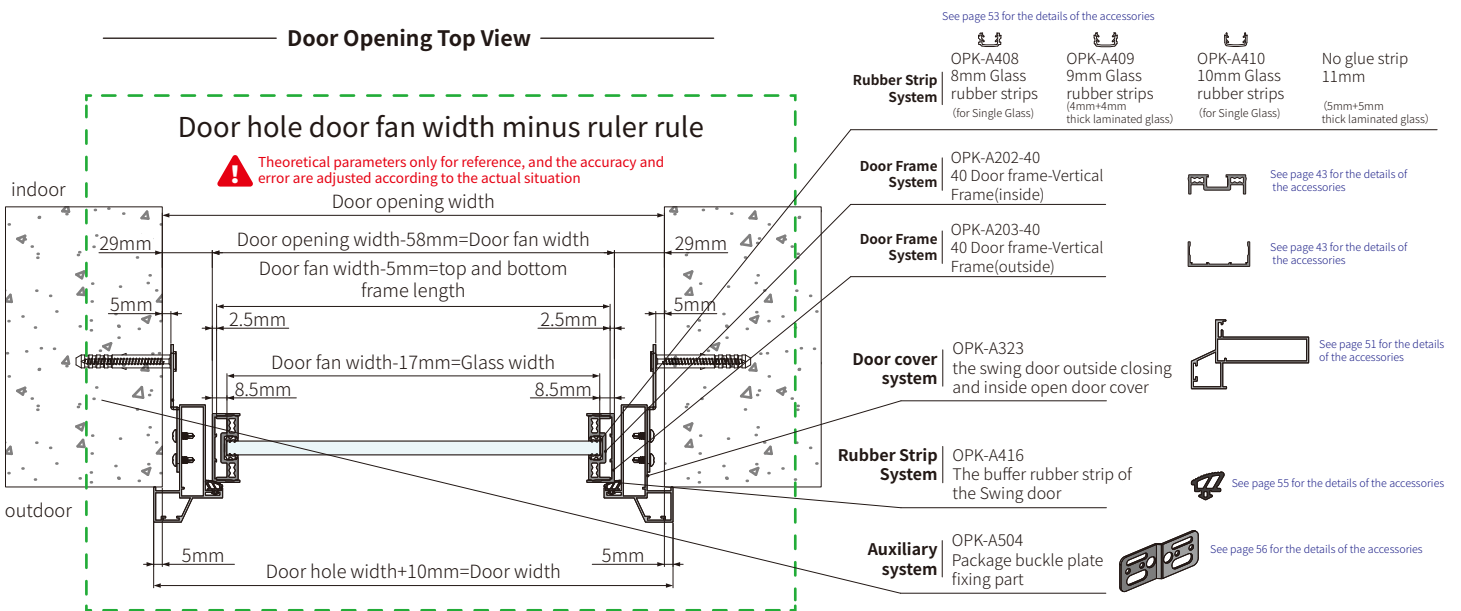


Application solution

- The swing door
- Half door cover



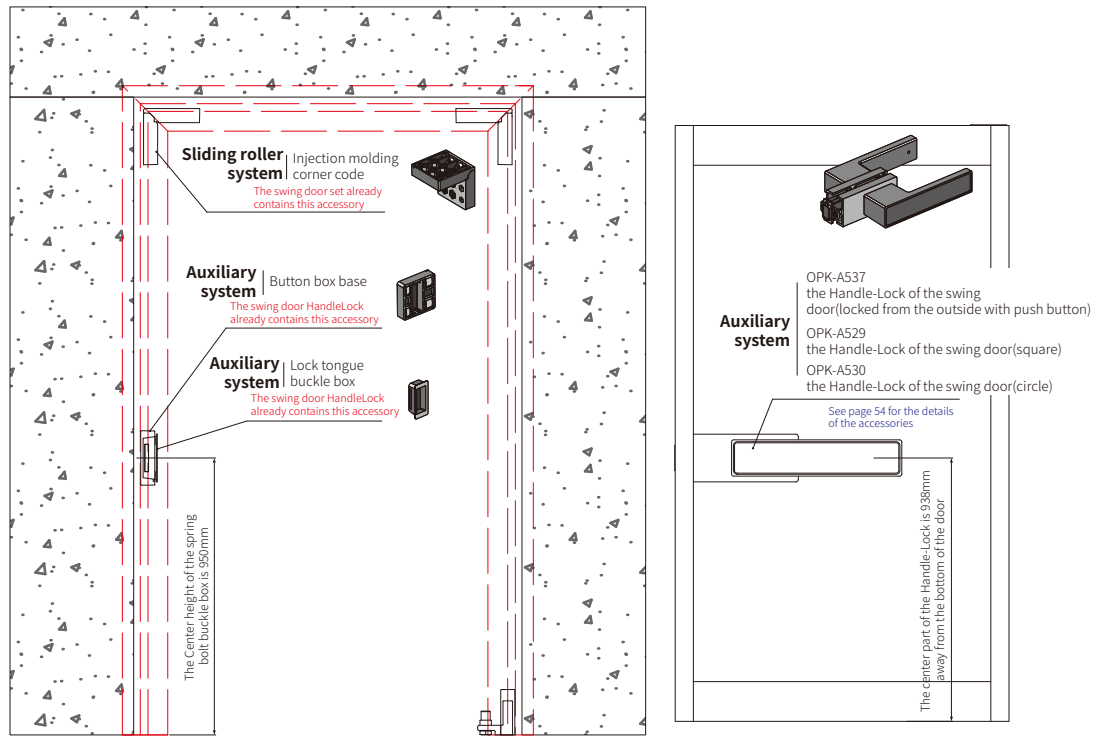
Door Opening Top View



Application solution

- The swing door
- Half door cover

Door opening front view



Door opening sectional view

