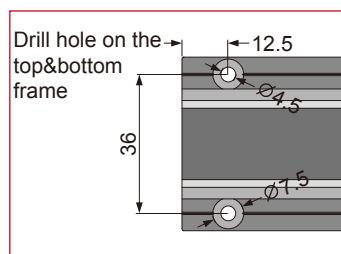
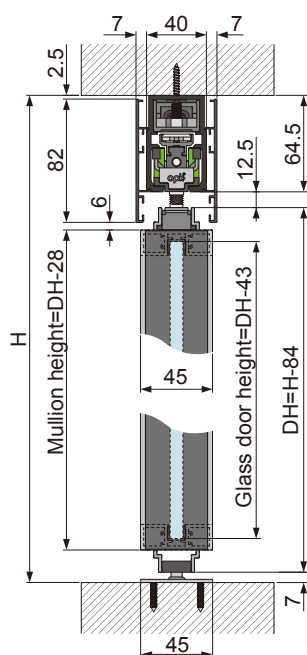
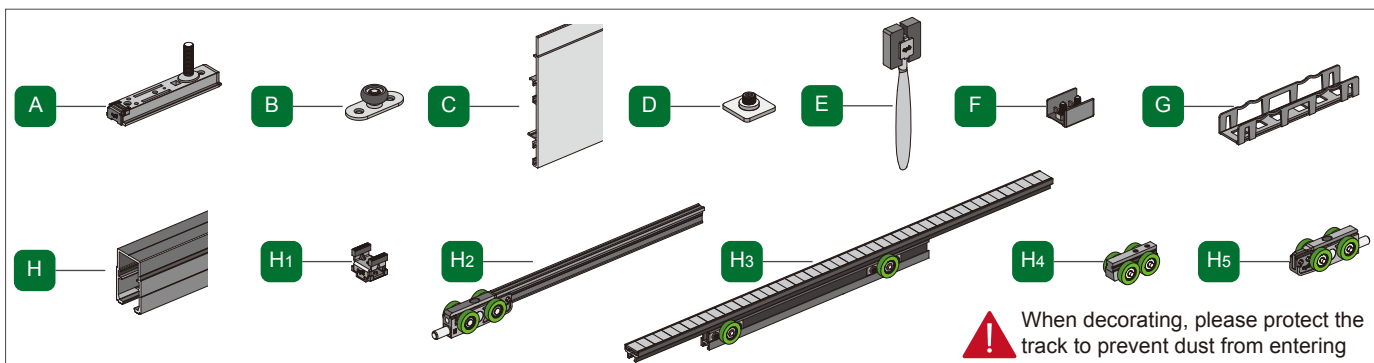


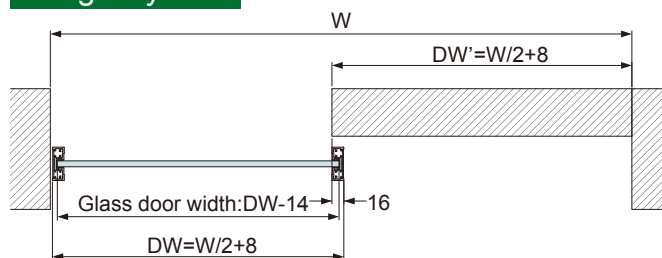
# opk® E-Space-Ceiling Slim Frame-Mounting Instruction



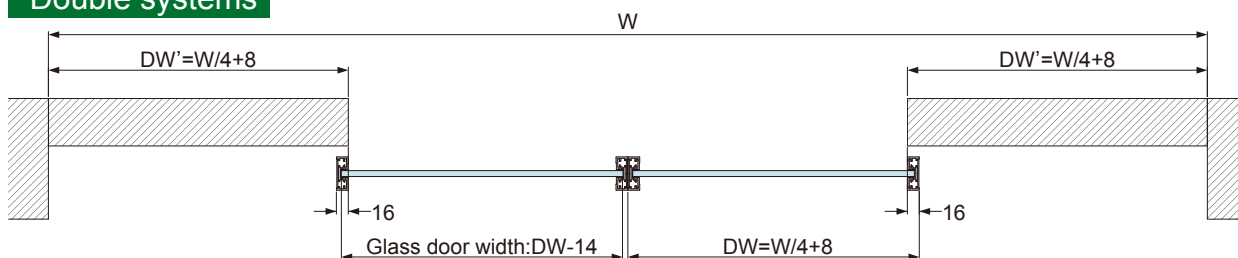
≤120kg

Track length L	Door opening size W	Door width DW
2000	1400-2000	710~1010
2700	2000-2700	1010~1360
3400	2700-3400	1360~1710

## Single system



## Double systems



## Single system

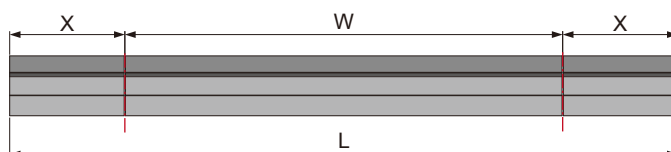


When the track system is too long then both sides need to be cut to the same length X

Track length L	Door opening size W
2000	1400-2000
2700	2000-2700
3400	2700-3400

$$X=(L-W)/2$$

Note:  
W is door opening width  
L the track length delivered  
X is the length of cutting at both sides



## Double systems

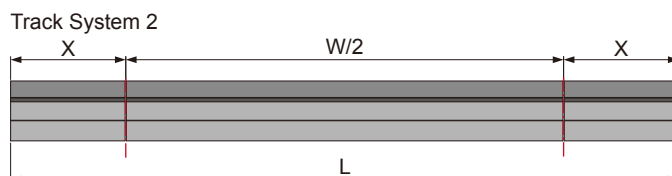
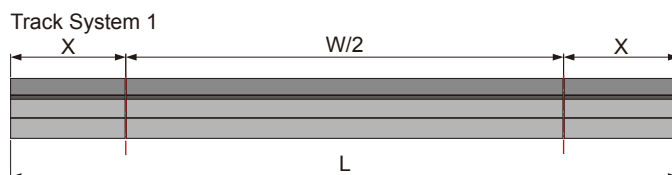
⚠ When the track system is too long then both sides need to be cut to the same length X

⚠ Track System 1 and Track System 2 need to be cut to the same length X

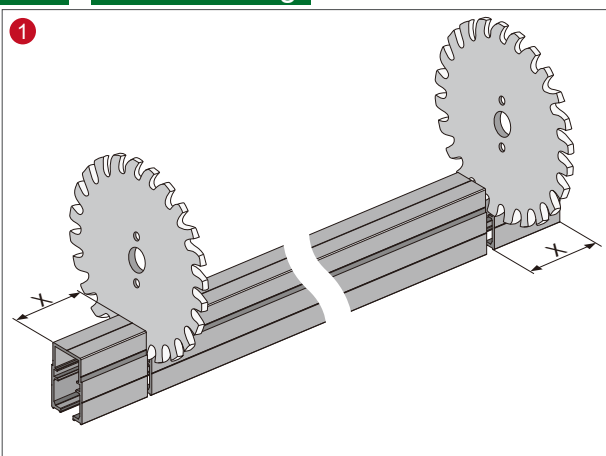
Track length L	Door opening size W
2000x2	2800~4000
2700x2	4000~5400
3400x2	5400~6800

$$X = (L - W/2) / 2$$

Note:  
W is door opening width  
L the track length delivered  
X is the length of cutting at both sides



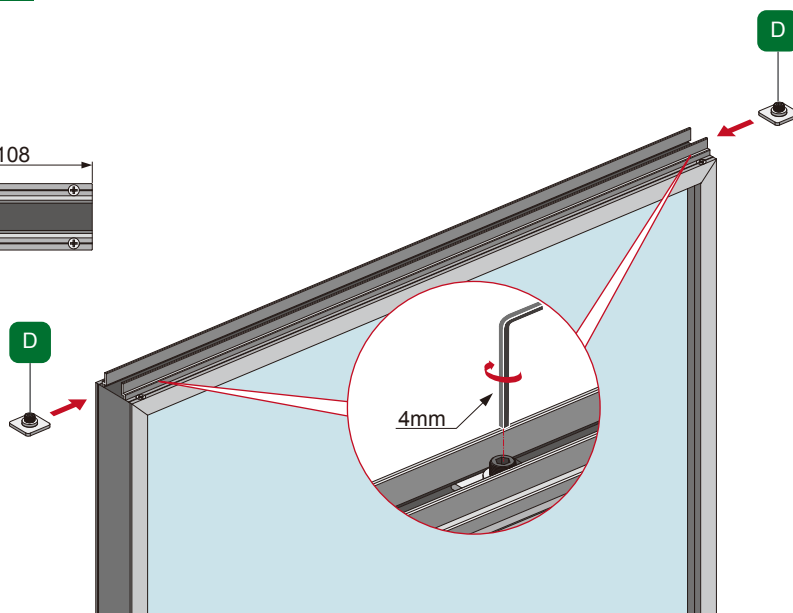
## 1 Track Cutting



⚠ After cutting the track, please clean the track with cleaning brush to keep the track inside clean.



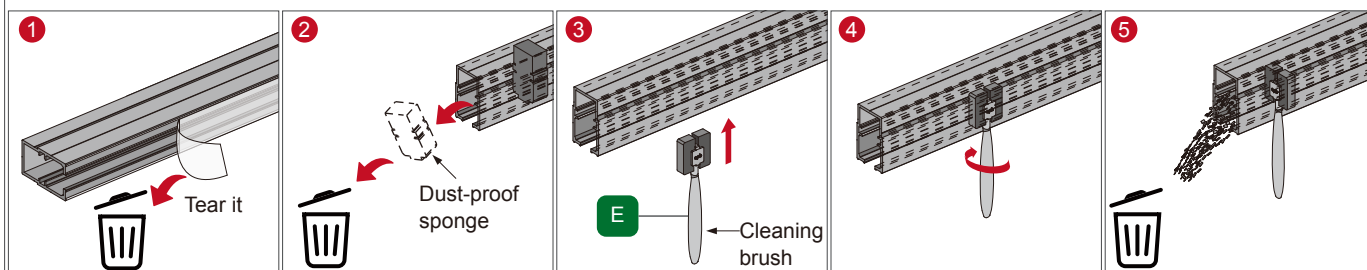
## 2 Install the panel and accessories



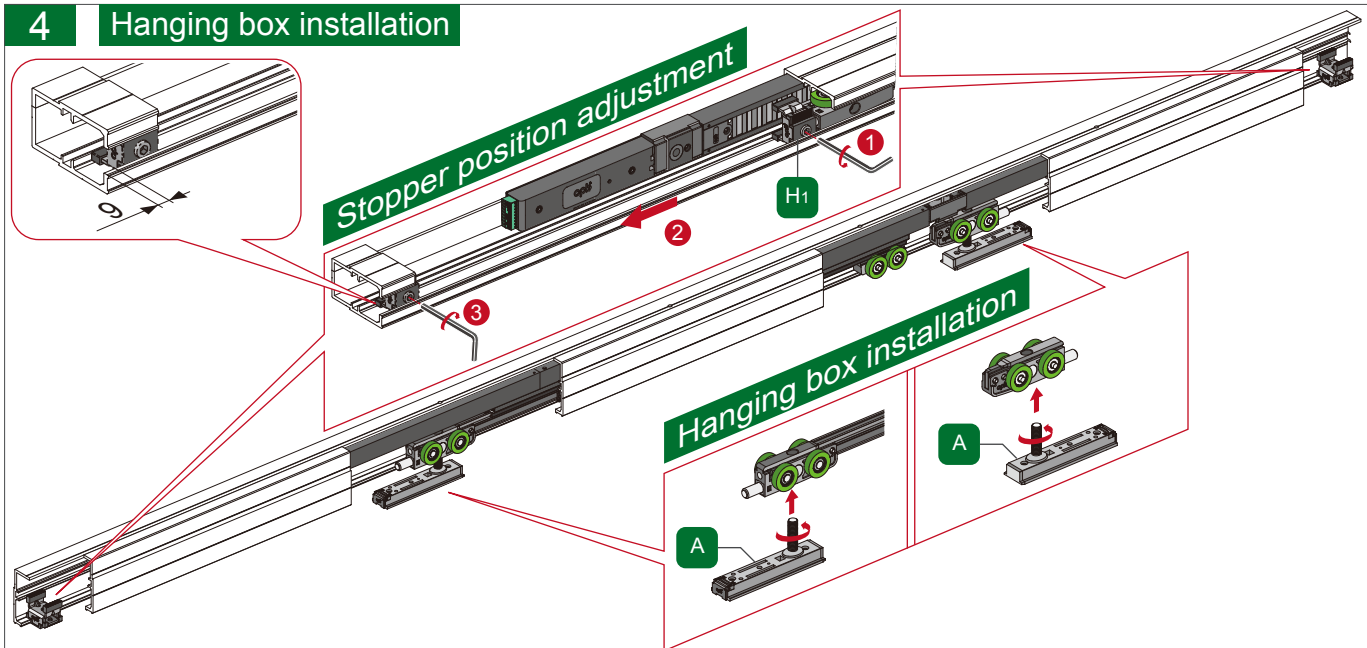
### 3 Clean the track



Please clean the track with a cleaning brush to keep the inside of the track clean

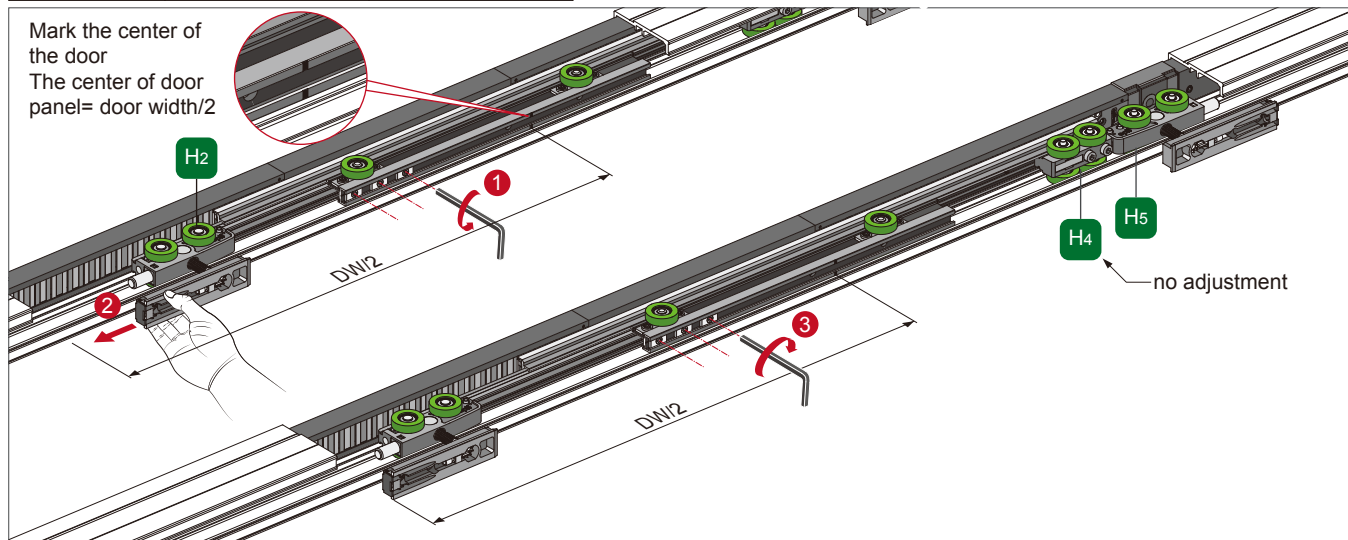
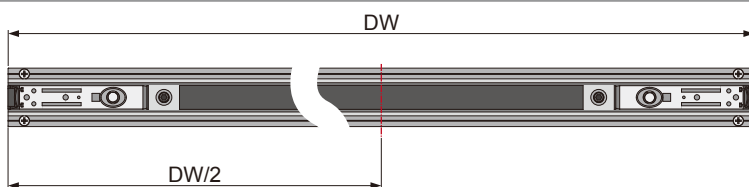


### 4 Hanging box installation



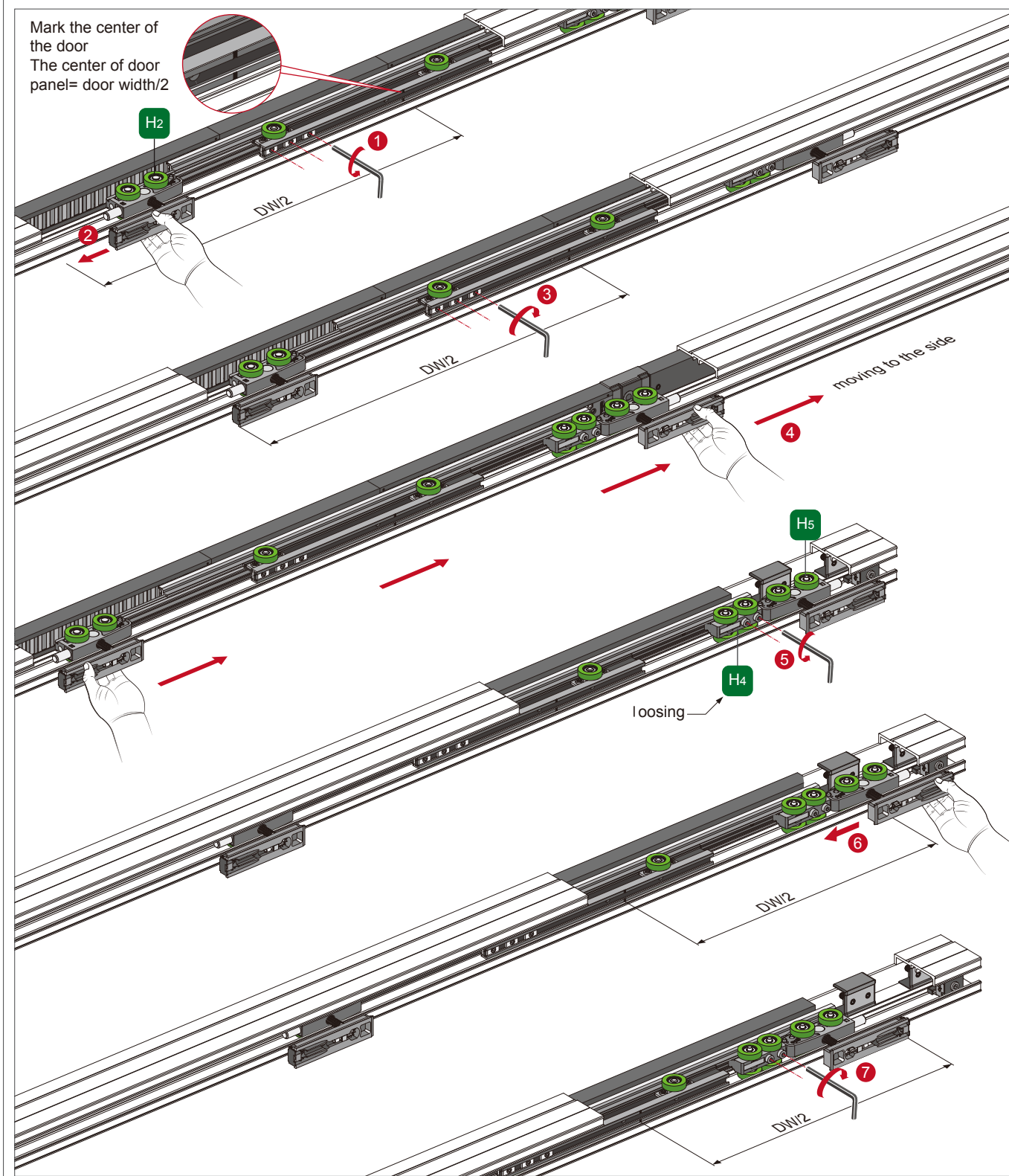
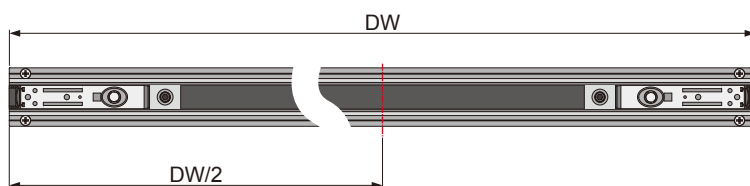
### 5 Adjustment for a wider door panel

Track length L	Door opening size W	Door width DW
2000	1400-2000	820~1010
2700	2000-2700	1170~1360
3400	2700-3400	1505~1710



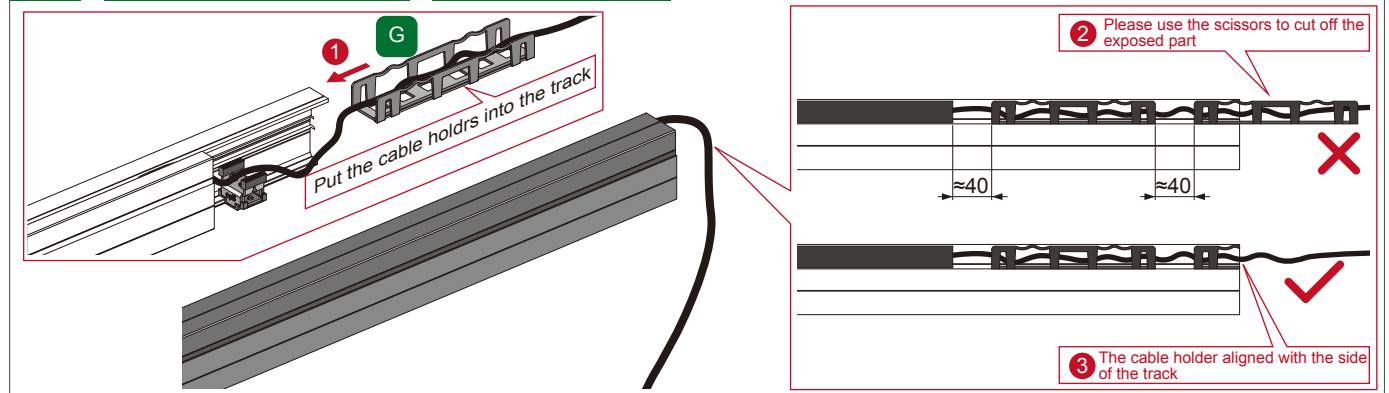
## Adjustment for a narrower door panel

Track length L	Door opening size W	Door width DW
2000	1400-2000	710~820
2700	2000-2700	1010~1170
3400	2700-3400	1360~1505

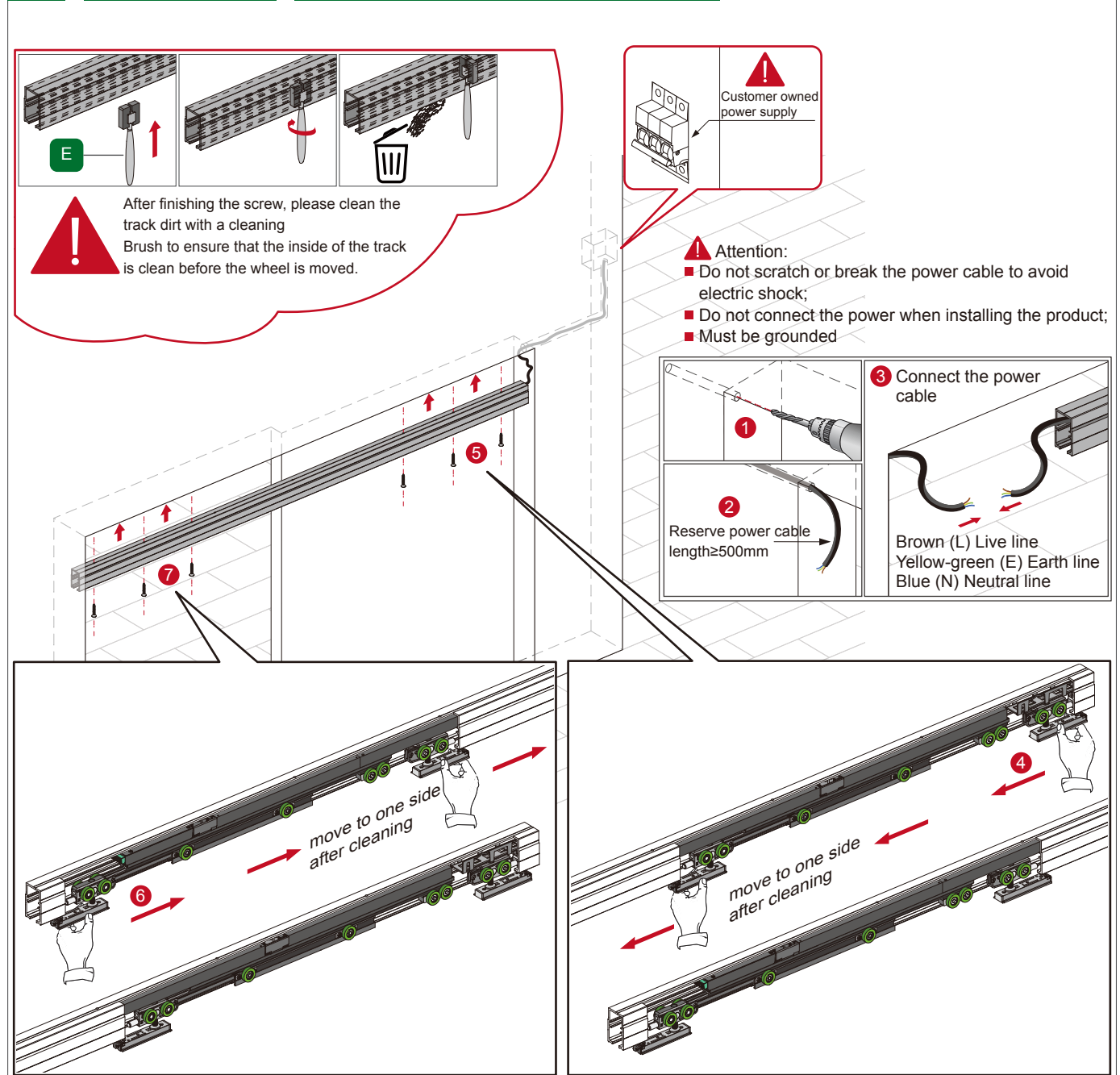




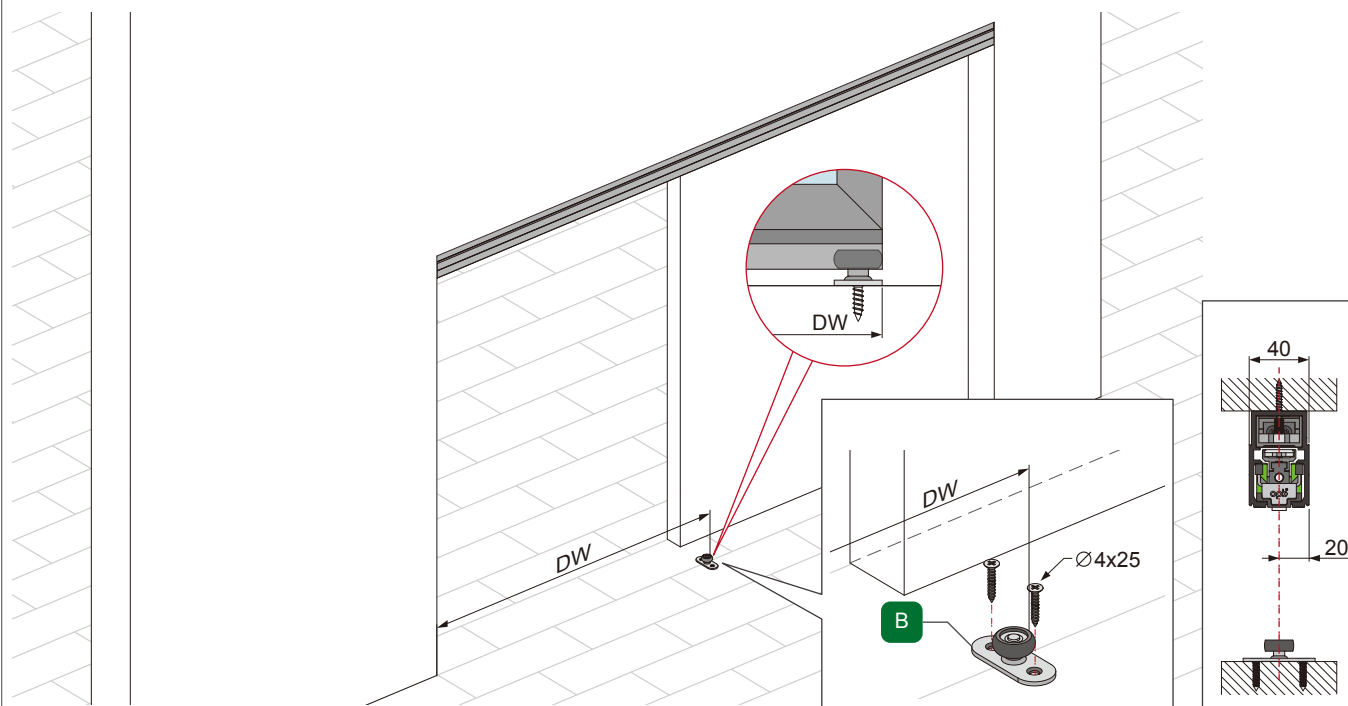
## 6 Install cable holder Single system



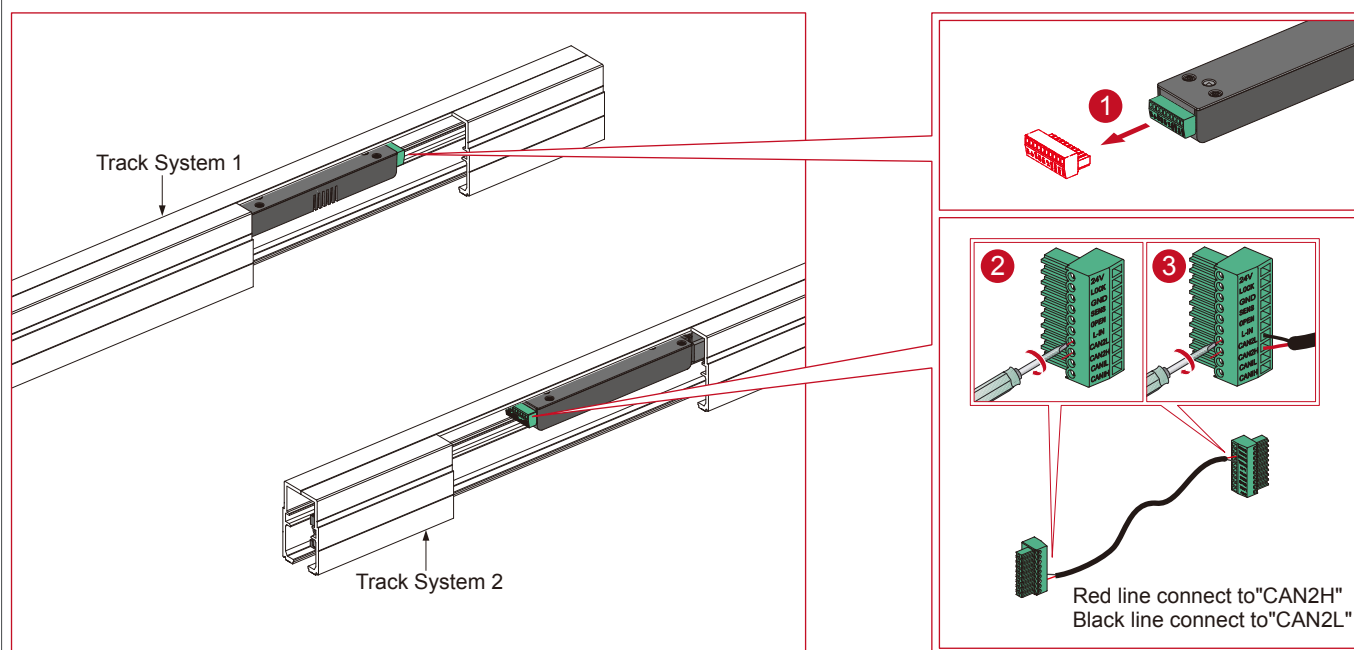
## 7 Single system Install power cord and track and track



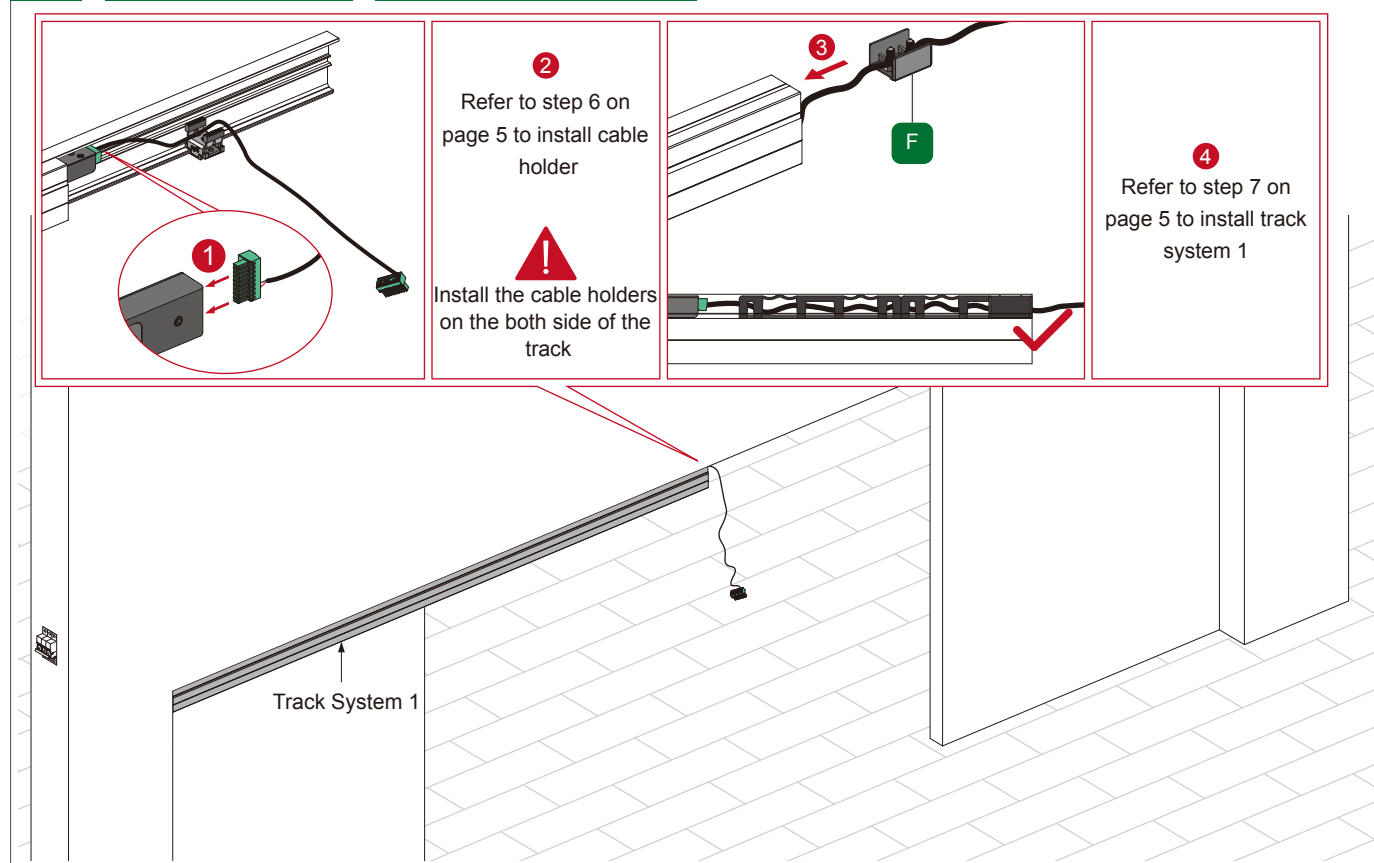
## 8 Single system Bottom guide installation



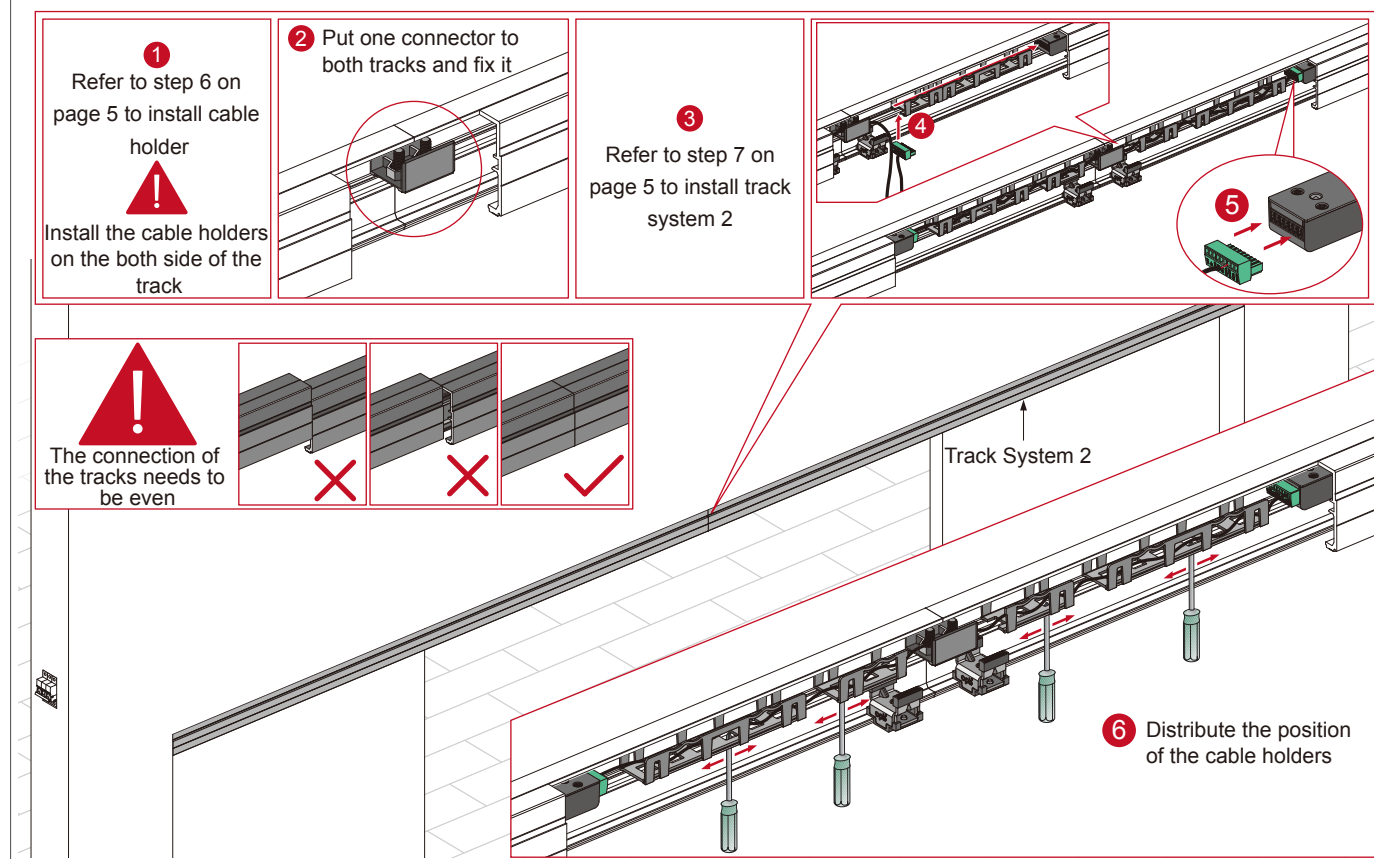
## 9 Double systems Connect cables



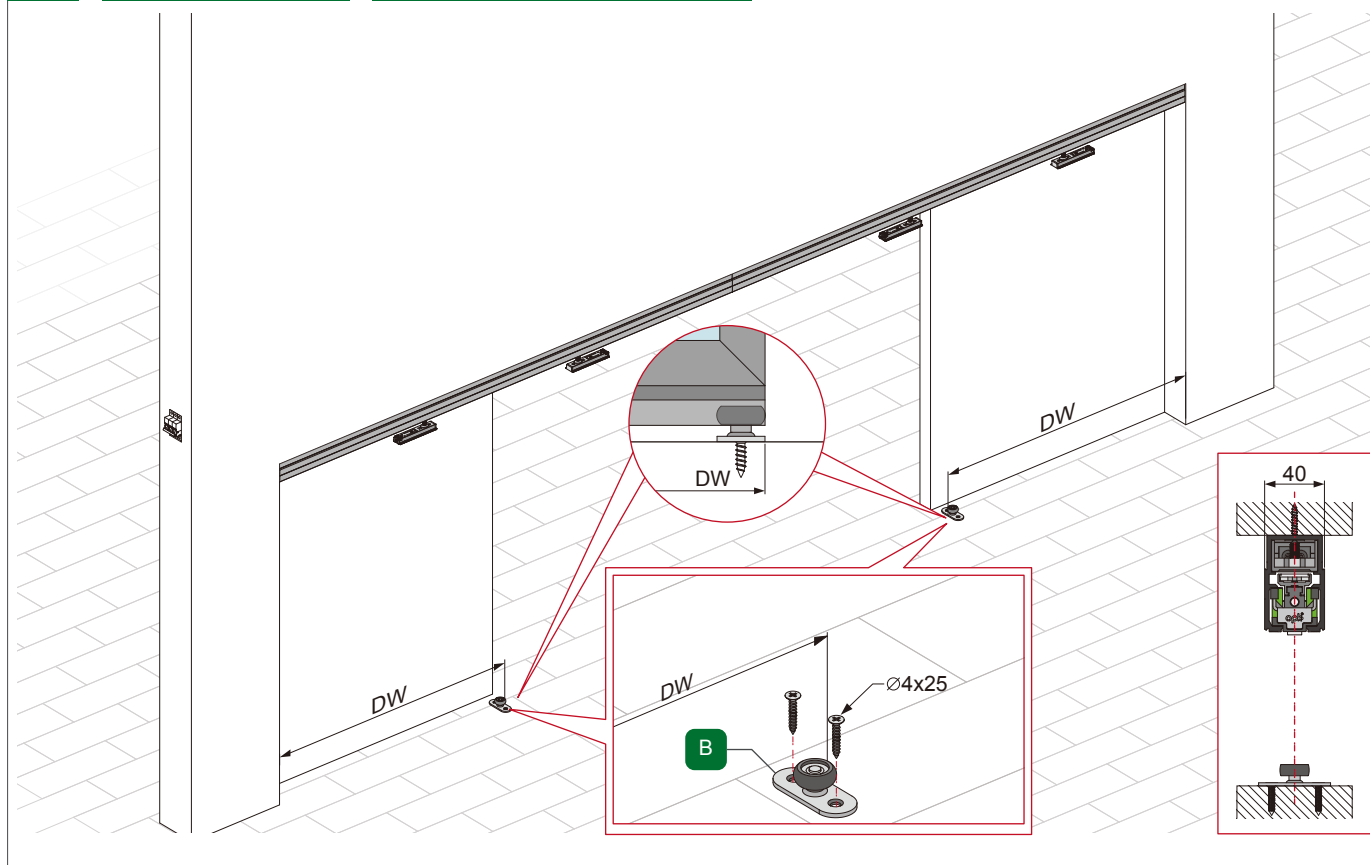
## 10 Double systems Install track system 1



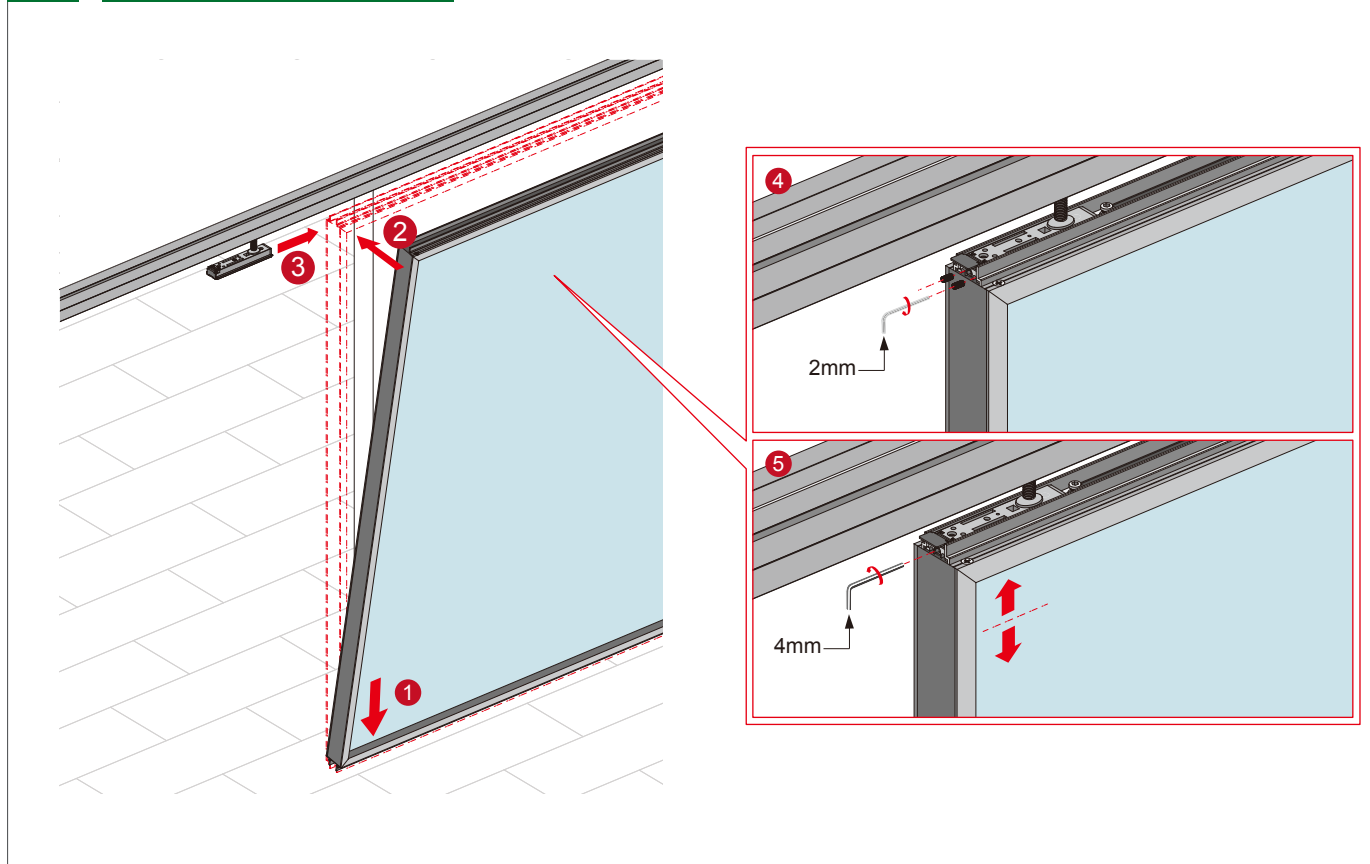
## 11 Double systems Install track system 2



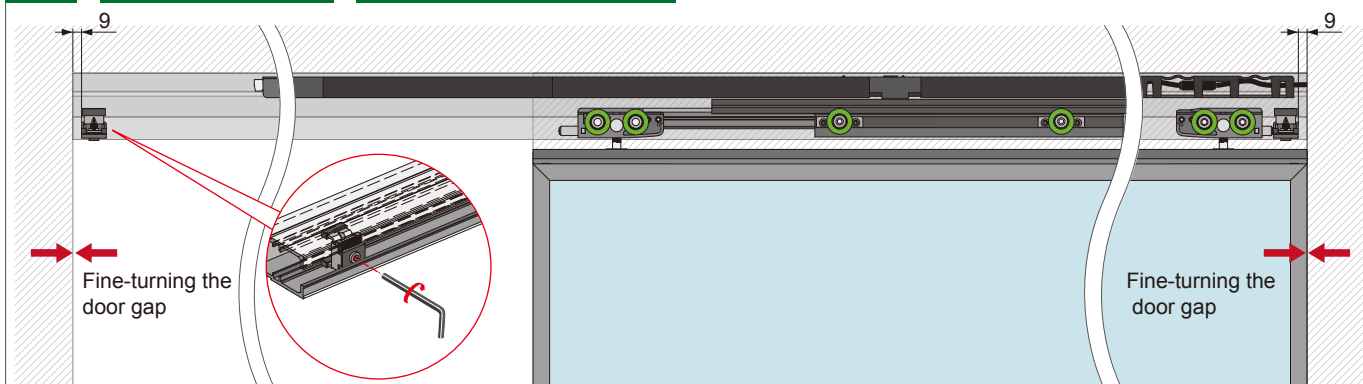
## 12 Double systems Bottom guide installation



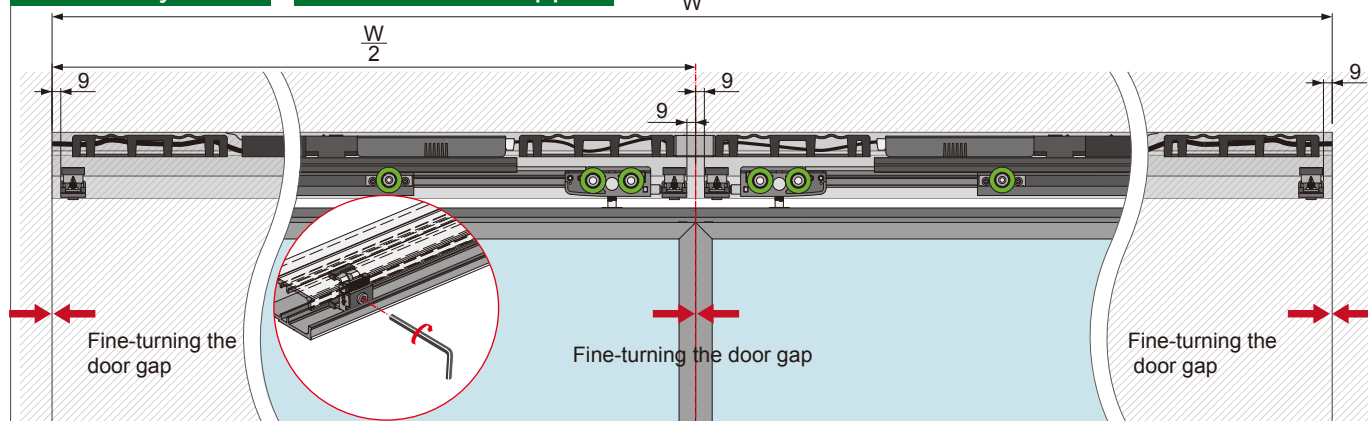
## 13 Door panel installation



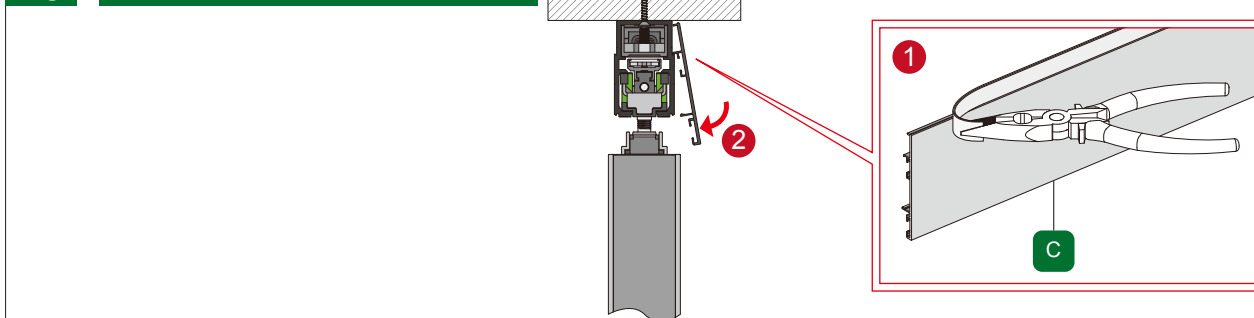
## 14 Single system Position the stopper



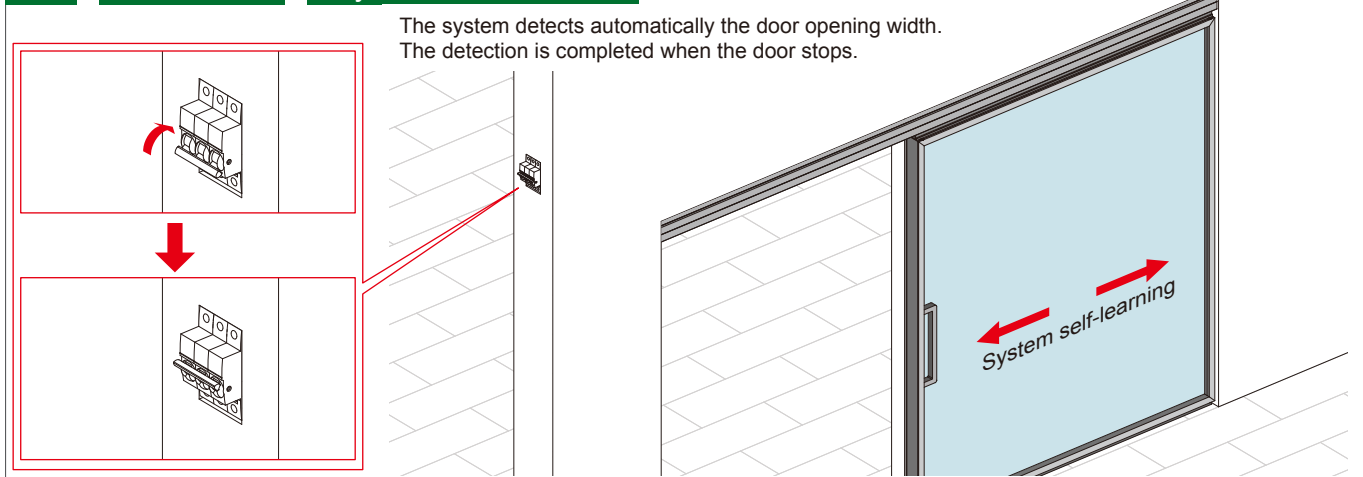
## Double systems Position the stopper



## 15 Decorative cover installation



## 16 Power-on System self-learning





# Certificate of qualification

Product name: \_\_\_\_\_

Product model: \_\_\_\_\_

The date of production: \_\_\_\_\_

Inspection unit :(chapter) Inspector: \_\_\_\_\_

**This product has been inspected to meet the standard requirements**

**Zhongshan OPIKE Hardware Product Co., Lt**

ADD: No.11, Ruihe Road, Yongning Luosha, Xiaolan Town, Zhongshan City, GD., China.

# Product Warranty Card

The customer name: \_\_\_\_\_

The warranty date: \_\_\_\_\_

The warranty period is 1 year. If there is any quality problem within the warranty period, the manufacturer shall be responsible for free maintenance.(But in case of damage caused by such irresistible factors as improper use, man-made damage or natural disaster, the maintenance cost will be charged).After the warranty period of the product, maintenance costs will be charged.

## Tips:

In order to use our products correctly, please carefully read the "Product Operation Instruction". In the process of using the products, if there is any quality problem, please contact the manufacturer in time, and do not disassemble without permission.

**After-sales phone: 400 804 9989**

## The packing list

The serial number	The name	unit	Quantity							location
			1	2	3	4	5	6	7	
1	Rail system	Pc								B
2	Common parts	Set								C
	Linkage accessories									
3	The bottom rail	Pc								A
4	Accessories package	Pc								B
5	Instructions	Pc								A
6	Warranty card	Pc								C
7	Communication line	Pc								C
8	Decorative cover	Pc								B
9	Pre-Mounting track	Pc								A

The serial number	The name	unit	Quantity							location
			1	2	3	4	5	6	7	
10	The remote control	Pc								C
11	Sensor	Pc								C
12	Smart Sensor	Pc								C
13	Wireless switch	Set								C
14	Wired touch switch	Pc								C
15	Sensor Switch	Pc								C
16	Wired access control system	Set								D
17	Wireless access control system	Set								D
18										

Position code: A- in wooden case, B- in carton, C- in accessory box, D- individually packed

All quantity and location codes are invalid if altered