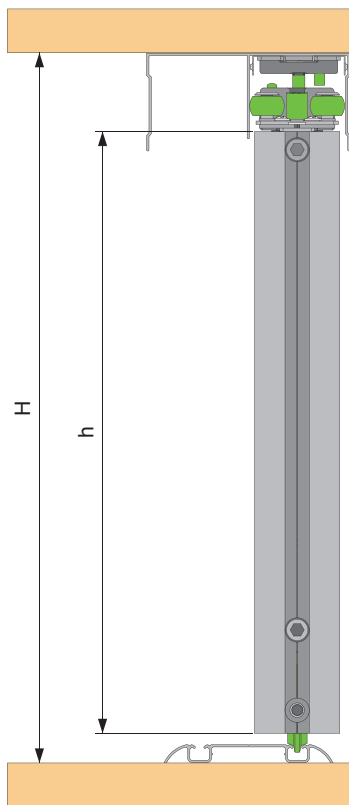


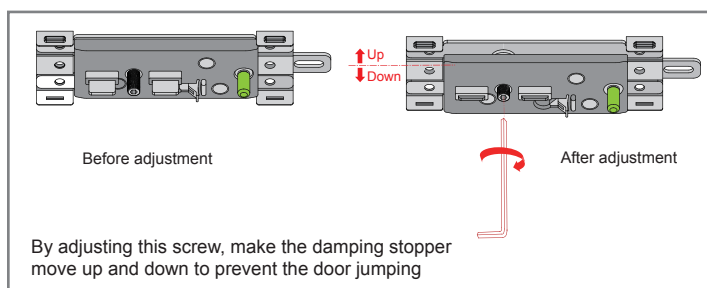
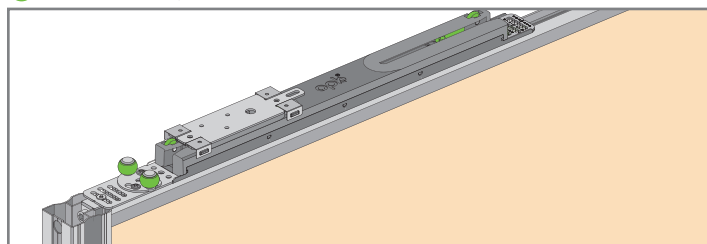
1 Cabinet requirements

$h(\text{Door Height}) = H(\text{Inner Door Frame Height}) - 43\text{mm}$

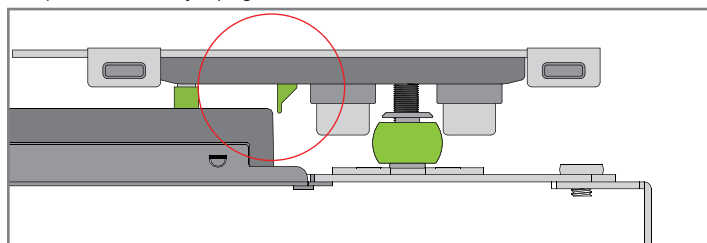


2 Technical features of the product

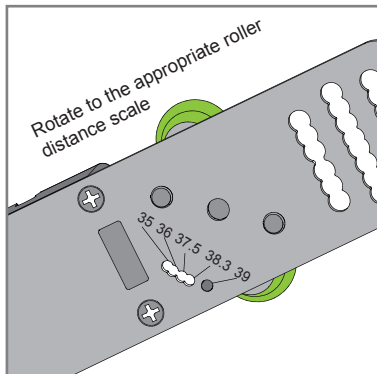
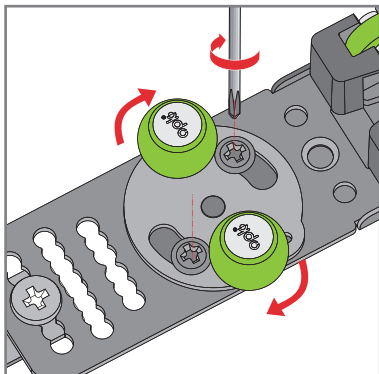
1 Door panel anti-jump function



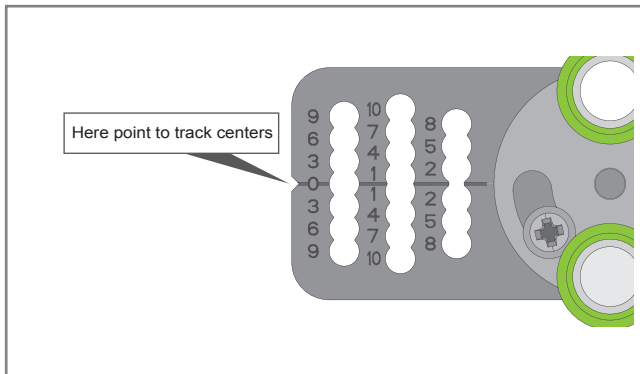
2 By adjusting this screw, make the damping stopper move up and down to prevent the door jumping



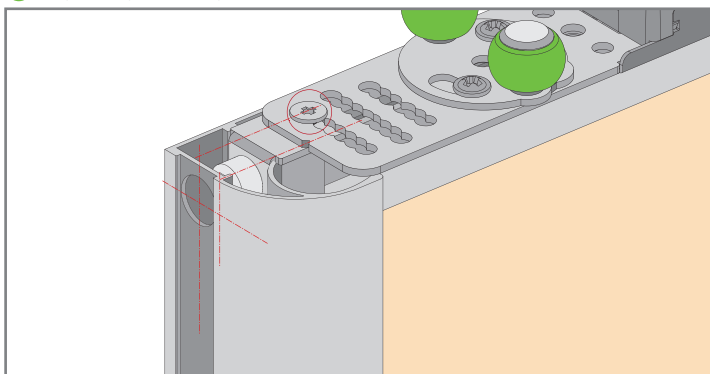
3 Adjusting roller distance



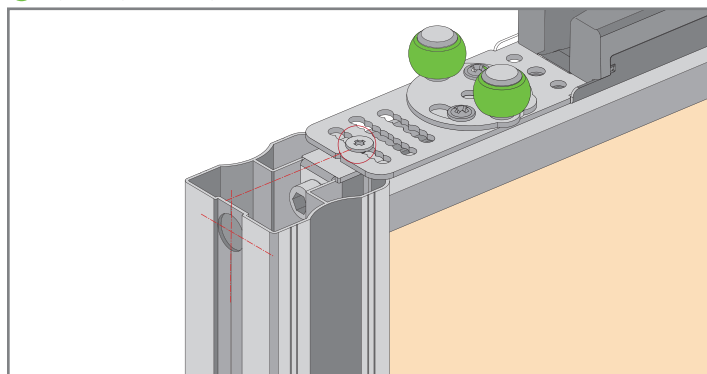
4 0-centered, fixed relative scale screws depending on the position of the sliding door



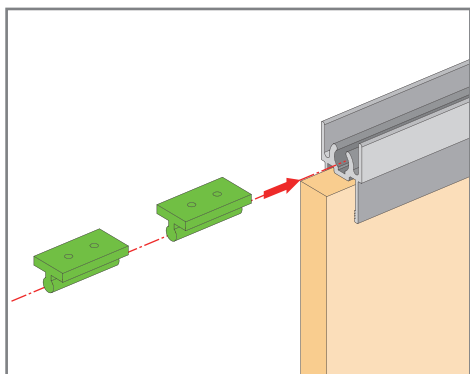
5 Asymmetry accessory installation



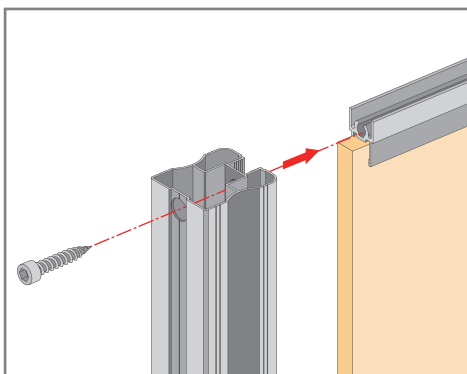
6 Symmetry accessory installation



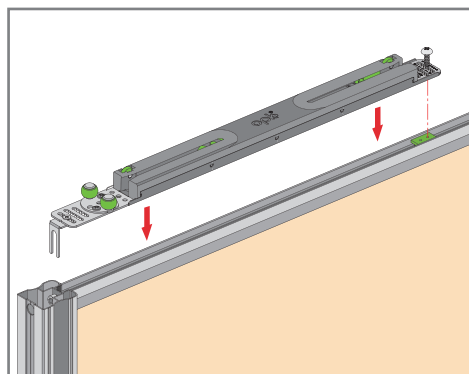
3 Insert the guide fixture into the top frame



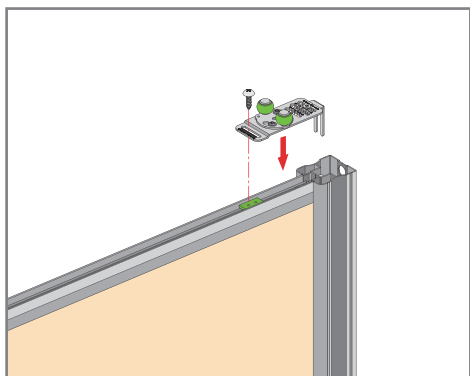
4 Close vertical frame



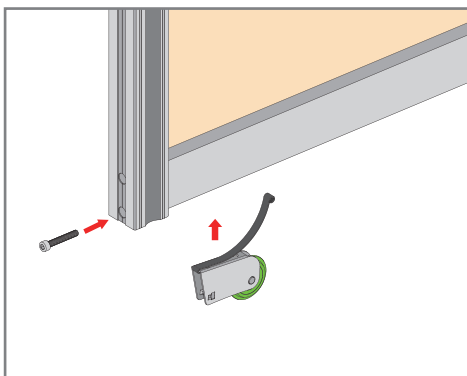
5 Install two way damper



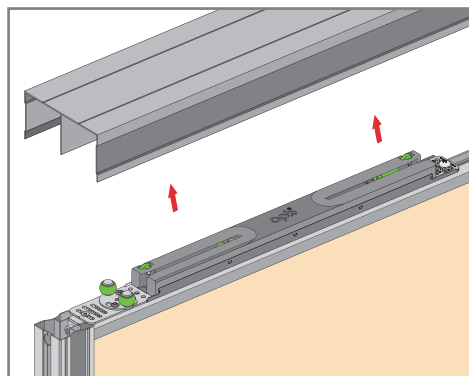
6 Install upper roller



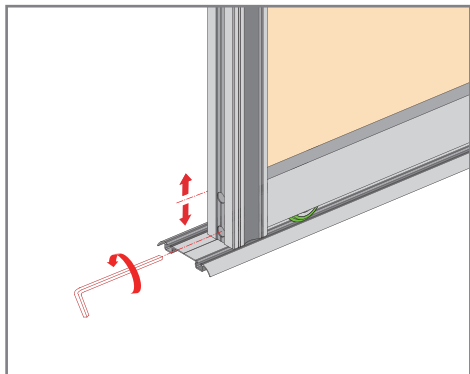
7 Install bottom roller



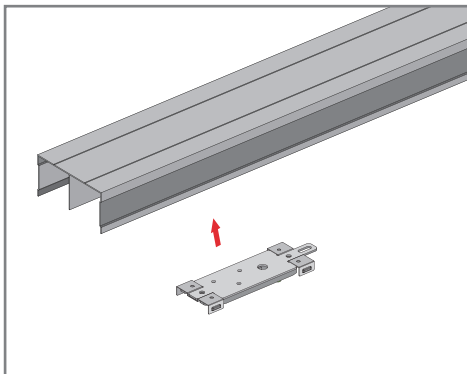
8 Install the door



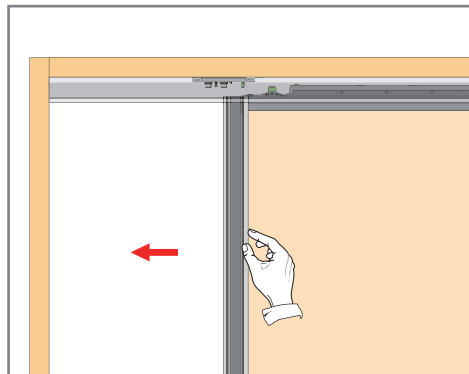
9 Adjust the door balance (adjust the bottom rollers)



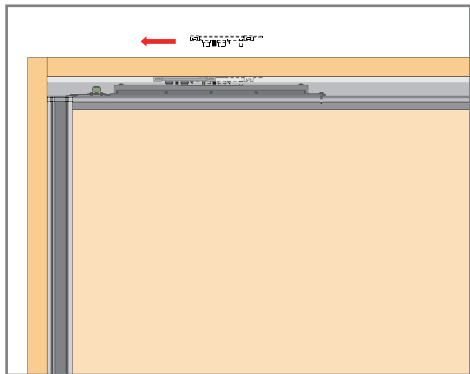
10 Stuck damper stopper



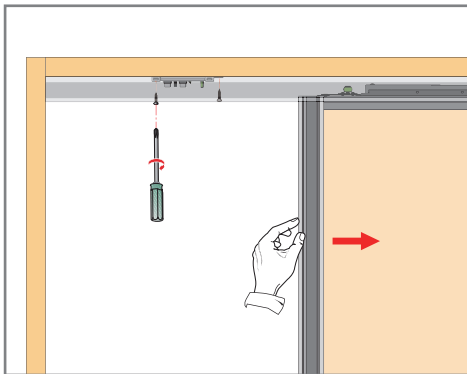
11 Positioning damper stopper



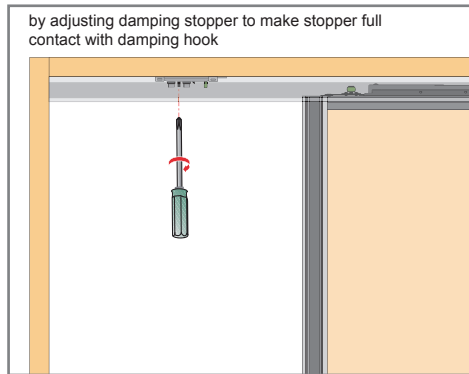
2 Damping stopper in place



3 Fix dampingstopper



4 Adjust damping stopper



by adjusting damping stopper to make stopper full contact with damping hook