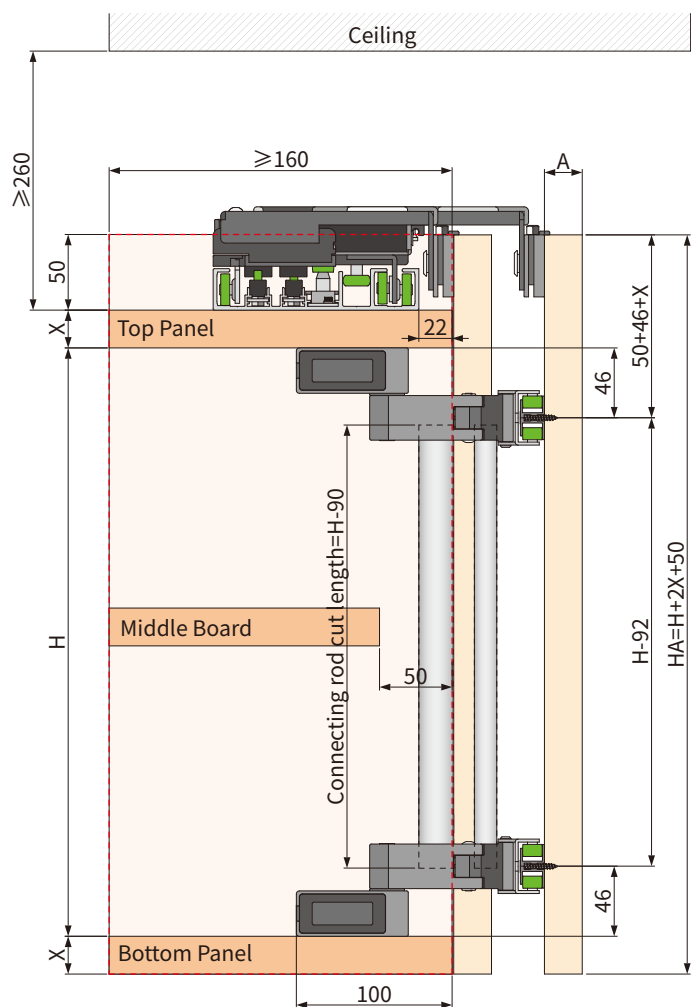


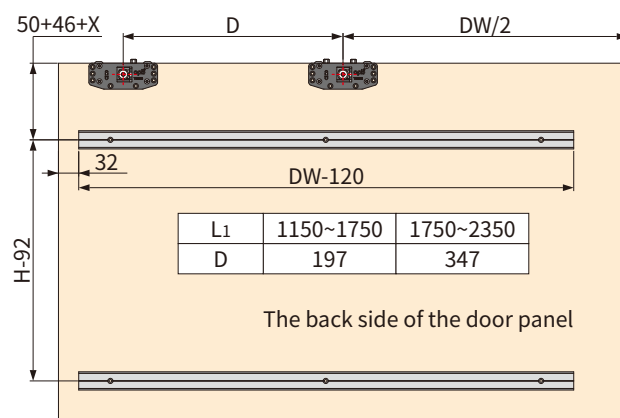
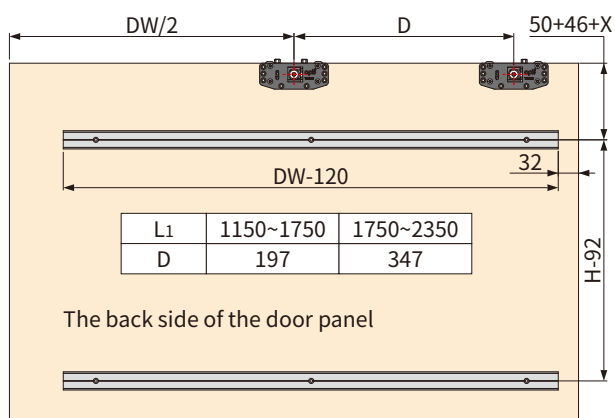
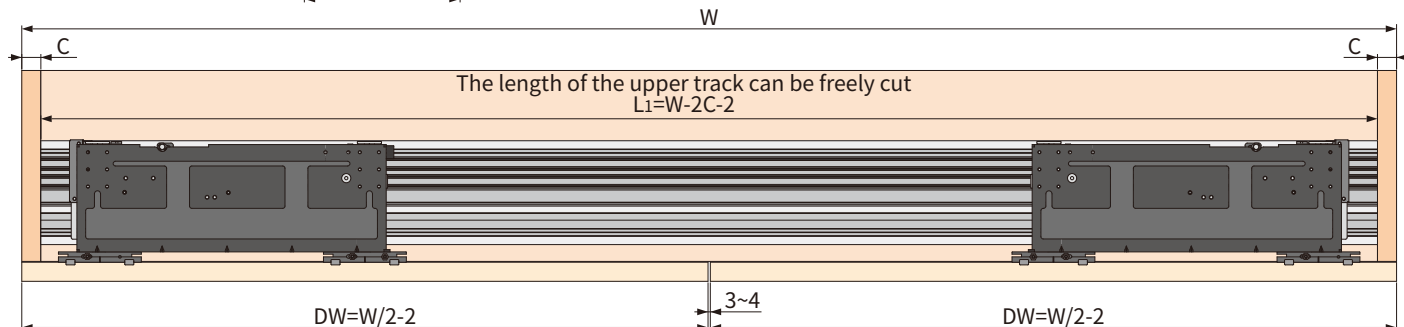
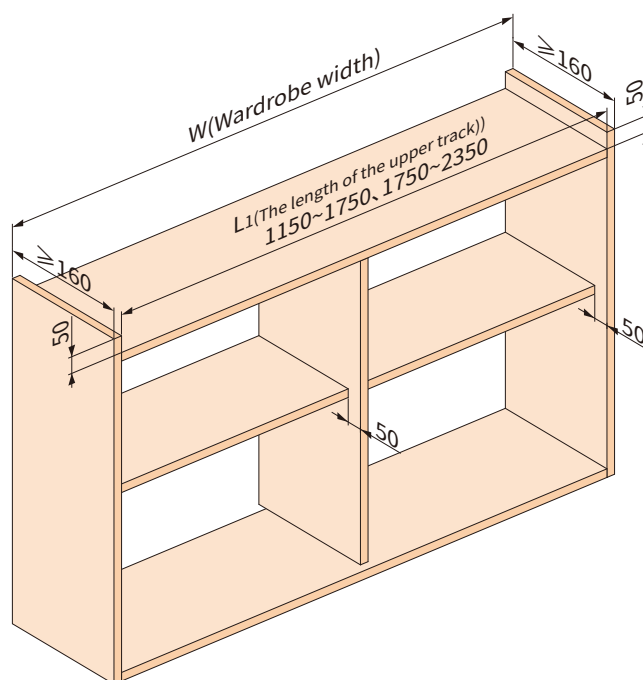
Aircraft 6 In-line Sliding Door System with Adjustable Cutting Size-Mounting Instruction

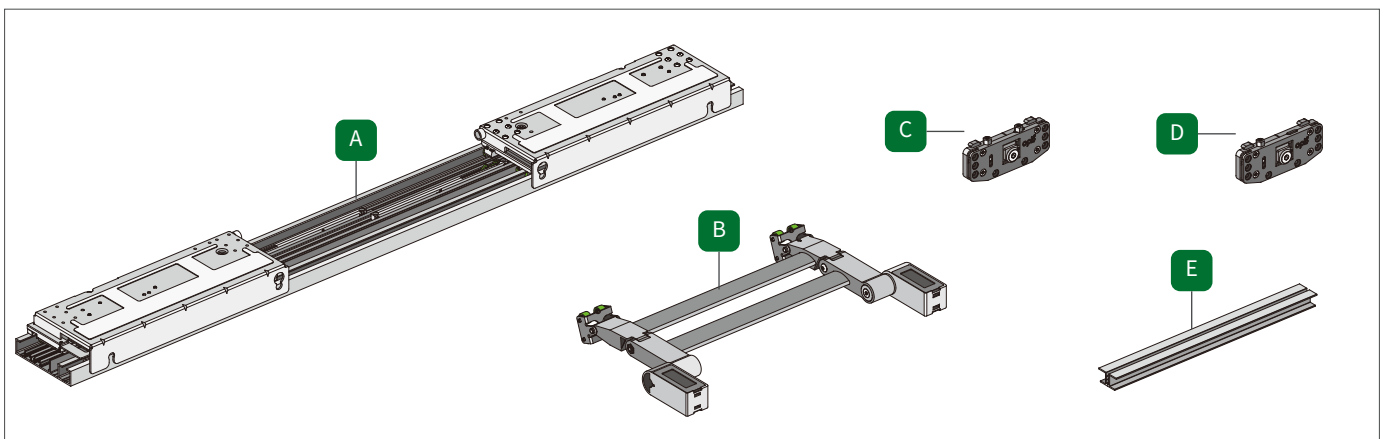
Installation parameters



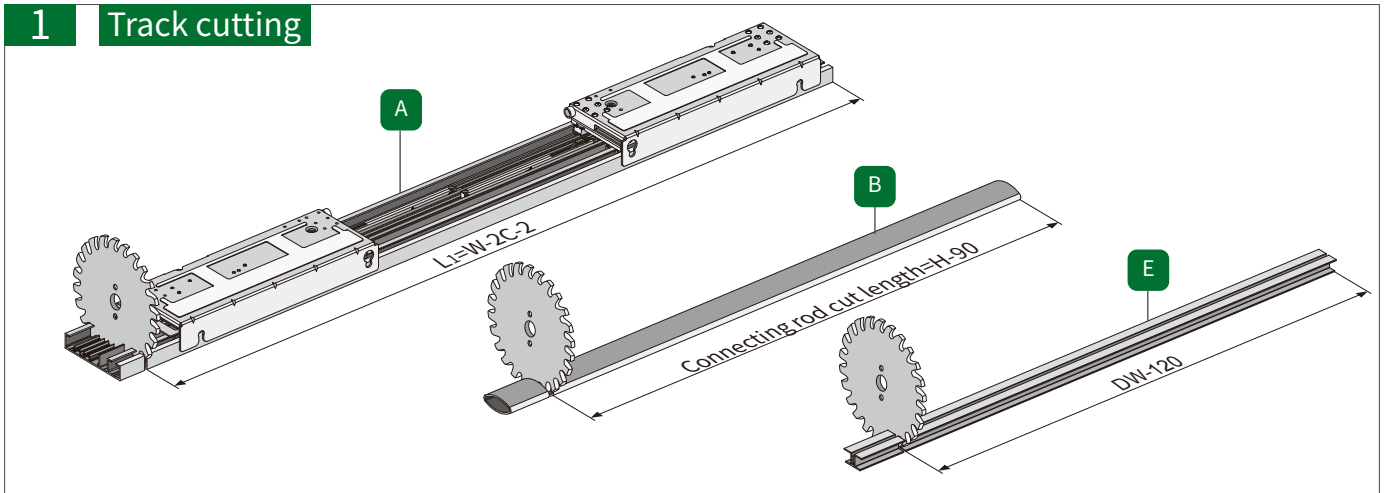
X the thickness of the top panel or bottom panel

Door thickness (A)	15~20mm(With a hand)
Door width (DW)	600~1200mm
Door height (HA)	≤690mm

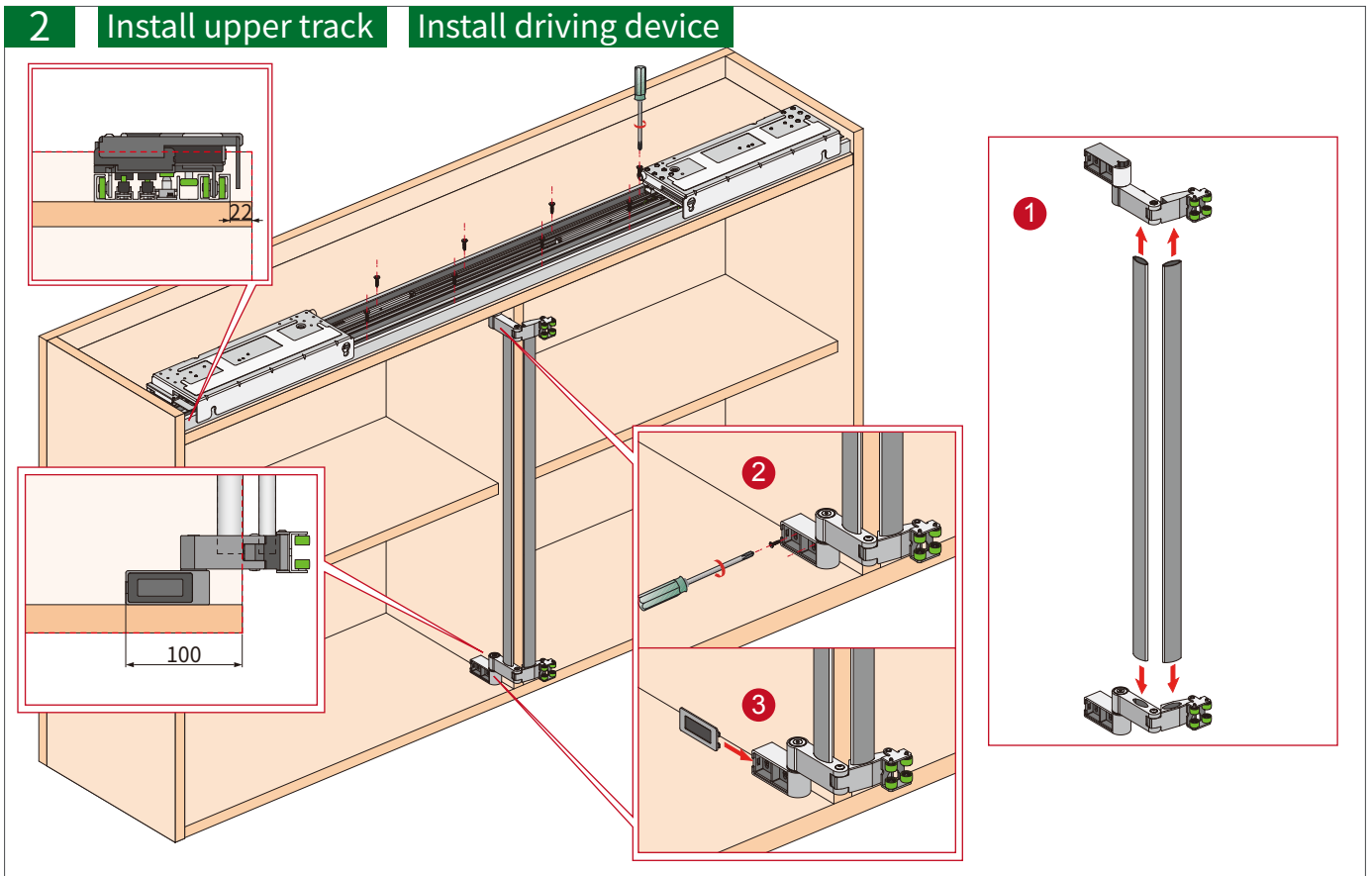




1 Track cutting

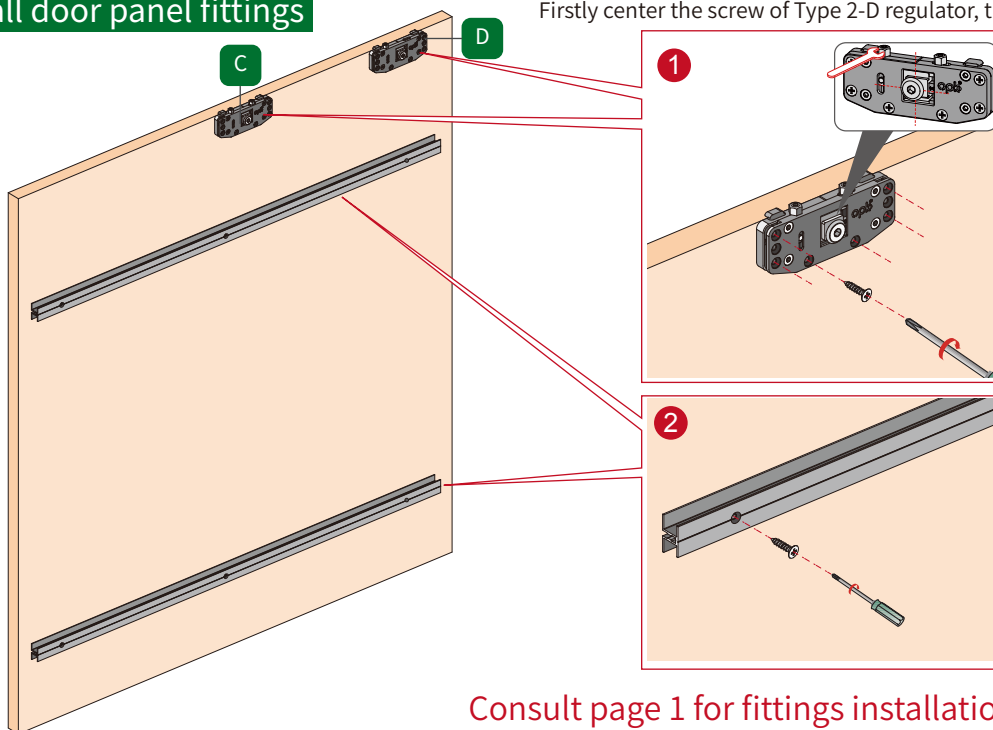


2 Install upper track Install driving device

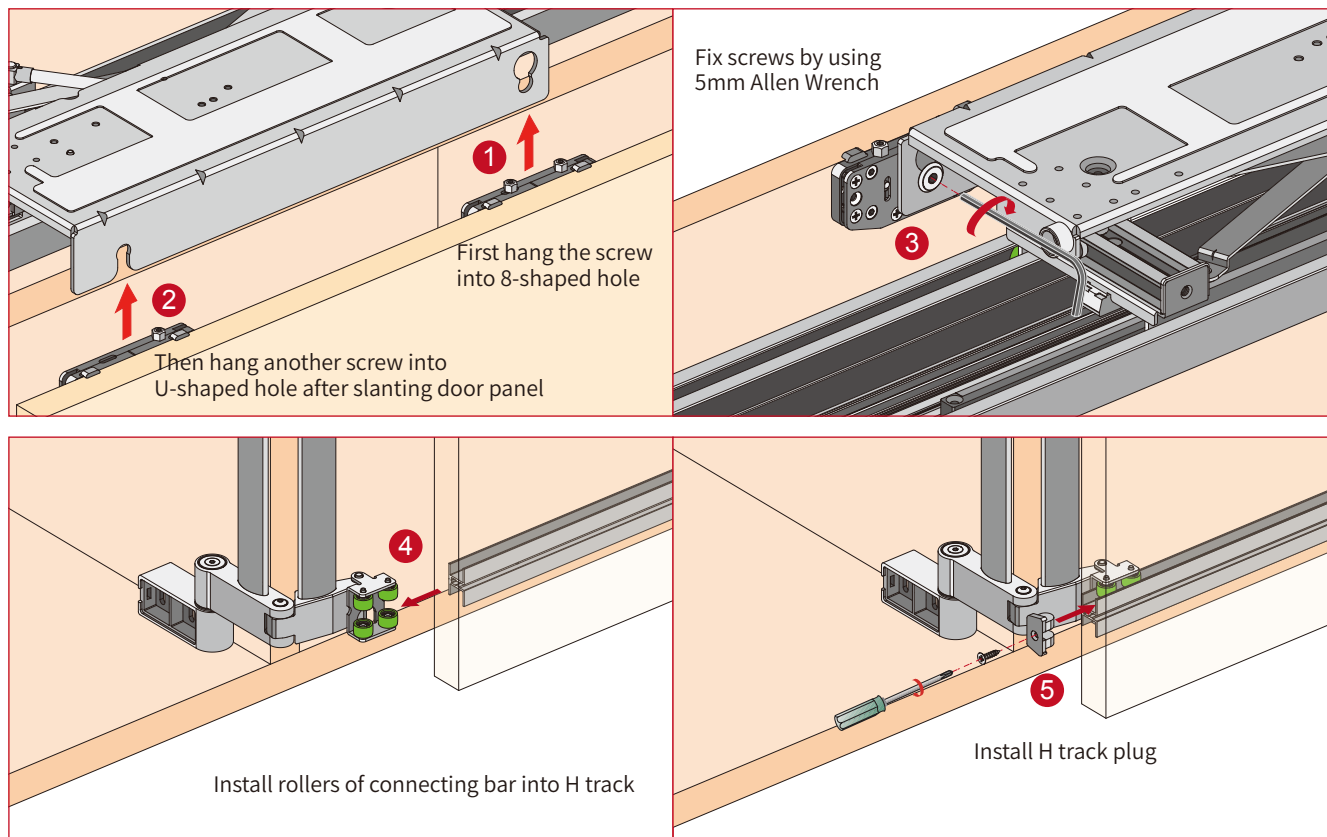


3 Install door panel fittings

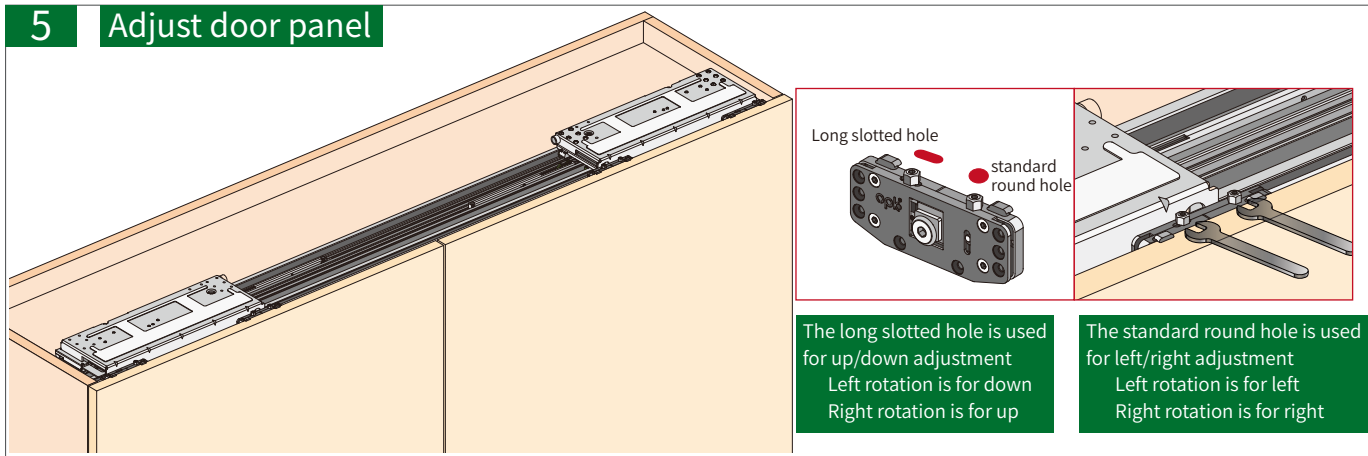
Firstly center the screw of Type 2-D regulator, then fix it to the panel



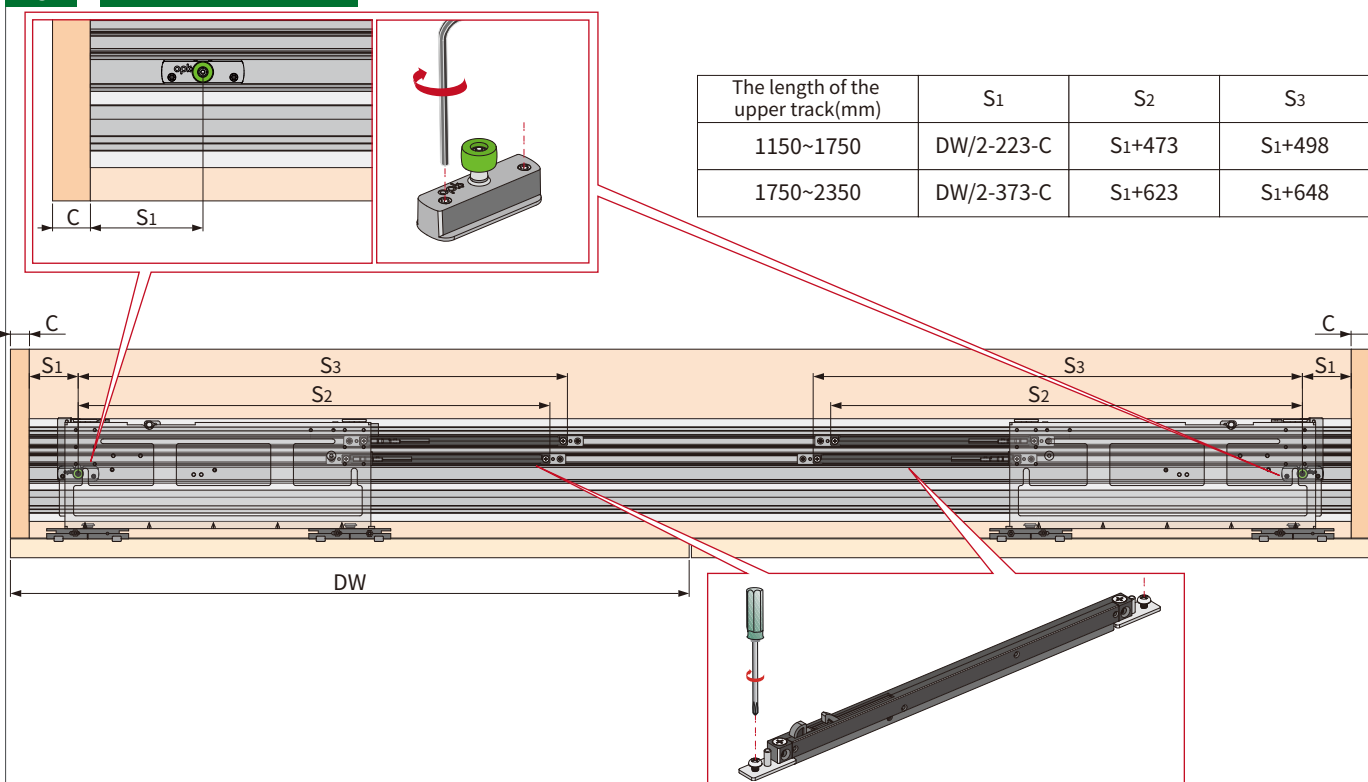
4 Install door panels



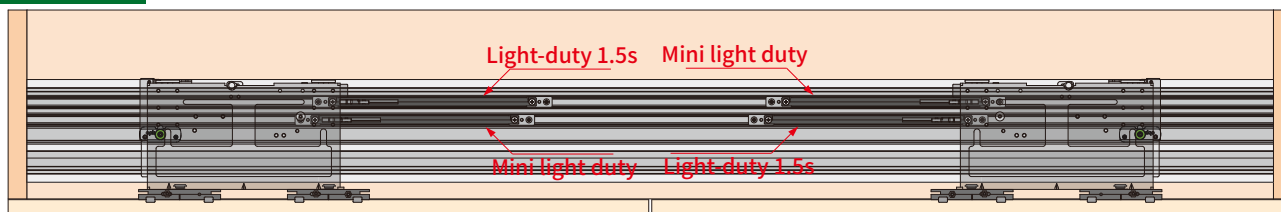
5 Adjust door panel



6 Fix the activator



1150~1750



1750~2350

