

潜艇3号 SUBMARINE 3

产品特点:

- 明装式结构设计 (可搭配铝边框);
- 阻尼自动挂钩设计, 脱钩自动复位功能;
- 弹性锁紧装置, 安装更简便;
- 高度差浮动功能, 滑动更平稳顺畅;
- 毛刷装置, 与滑轮同步运行清除轨道上的杂物, 滑动更顺畅;
- 采用高精度滑轮, 承重好、顺滑、静音、耐用。

技术概要:

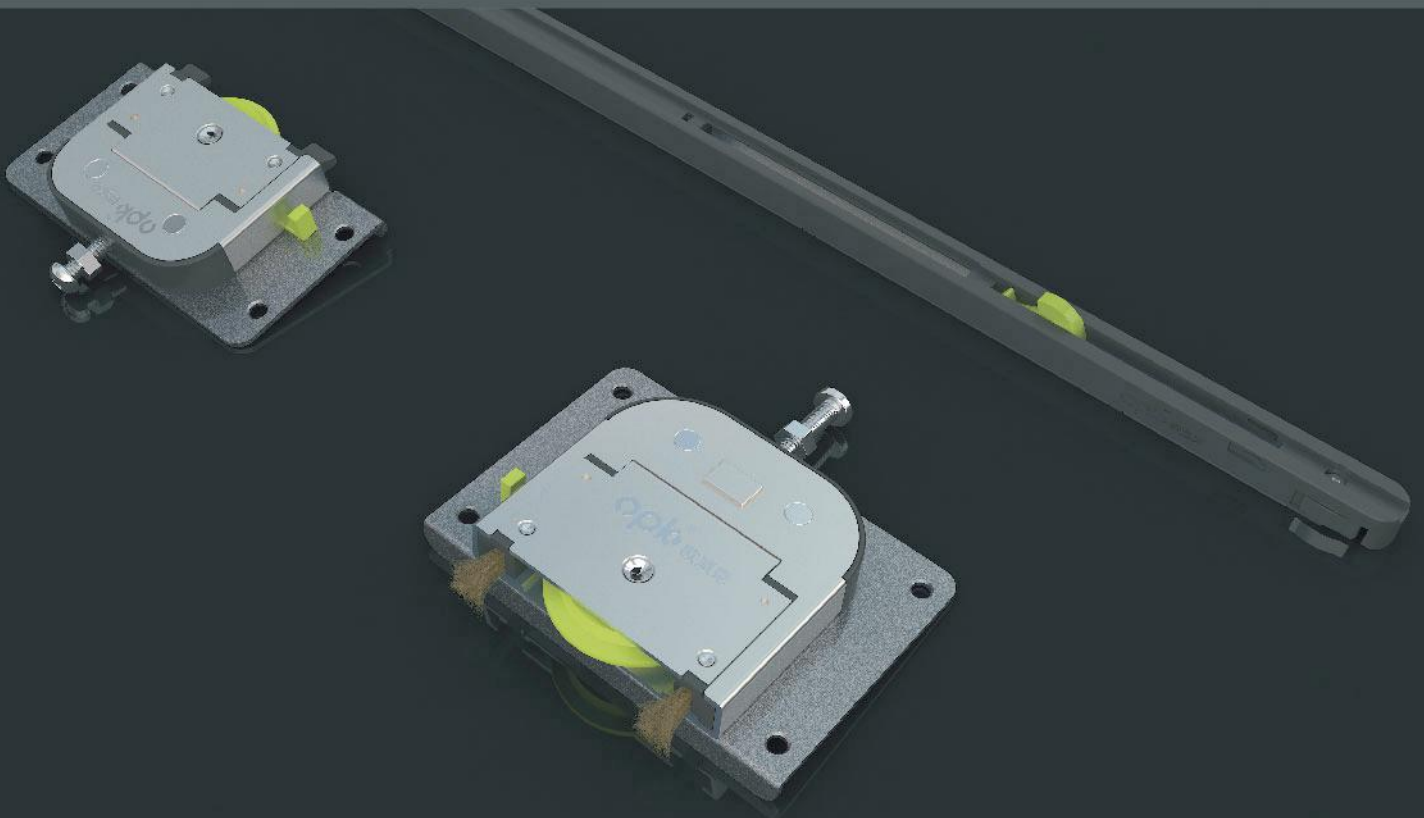
- 适用于: 单扇和双扇木质推拉门、铝边框门
- 调节性能: 门扇安装高度可调
- 门重: 单扇门≤50kg

Product Features:

- Surface mounted structure design (can match with aluminum frame).
- Damper automatic hook design, Automatic reset when out of hook.
- Elastic locking device, easier installation.
- Height difference floating function, sliding more stable and smooth.
- Brush device, clean the track when sliding, making sliding more smooth.
- High precision grade roller, stable, smooth and quiet sliding, long service time.

Technical Points:

- **Application:** Single and double wood sliding door, aluminum door
- **Adjustment performance:** Door panel installation height is adjustable
- **Door Weight:** single door≤50kg



潜艇3号(无盖边轨道)套装
SUBMARINE 3 (NO COVER) COMPLETE SET



产品描述 Product Description	类型 Type	门重(kg) Door Weight (kg)	套装型号 Set Model
2门带阻尼 2 Doors With Damping	轻型 Light-duty	5-15	CJ112150A
	通用型 Normal	15-30	CJ112150B
	重型 Heavy-duty	30-50	CJ112150C
3门带阻尼 3 Doors With Damping	轻型 Light-duty	5-15	CJ112151A
	通用型 Normal	15-30	CJ112151B
	重型 Heavy-duty	30-50	CJ112151C

标准配置
STANDARD CONFIGURATION

配件描述 Fitting Description	2门带阻尼标准配置 2 Doors With Damping	3门带阻尼标准配置 3 Doors With Damping
上轮 Upper Roller	CJ112100A	4
下轮 Under Roller	CJ112101A	4
缓冲器 Buffer	轻型 Light-duty TN223A	4
	通用型 Normal TN223B	
	重型 Heavy-duty TN223C	
上轨道(银白) Upper Track (Silver)	XJA131AT	1条 × 2米/条 1pcs × 2m/pc
下轨道(银白) Under Track (Silver)	XJA133AT	1条 × 2米/条 1pcs × 2m/pc
竖框(银白) Vertical Frame (Silver)	XJA134AT	选配 Optional
上下横框(银白) Upper & Bottom Frame (Silver)	XJA135AT	选配 Optional
中横框(银白) Middle Frame (Silver)	XJA136AT	选配 Optional
GB/ST4.2 × 16十字槽沉头自攻钉 GB/ST4.2 × 16 Cross Recess Countersunk head Self-drilling Screw		32
2.5毫米内六角扳手 2.5mm Allen Wrench		1

订购说明: 下单时请注明套装型号或详细描述产品名称以及数量, 如“CJ112150A × 20套”或“潜艇3号(无盖边轨道)轻型2门20套”。
Ordering instructions: When place an order, please indicate the suit type or detailed product name and quantity, such as “CJ112150A × 20sets” or “SUBMARINE 3 (NO COVER) light-duty 2 doors 20 sets”

潜艇3号(有盖边轨道)套装
SUBMARINE 3 (WITH COVER) COMPLETE SET



产品描述 Product Description	类型 Type	门重(kg) Door Weight (kg)	套装型号 Set Model
2门带阻尼 2 Doors With Damping	轻型 Light-duty	5-15	CJ112152A
	通用型 Normal	15-30	CJ112152B
	重型 Heavy-duty	30-50	CJ112152C
3门带阻尼 3 Doors With Damping	轻型 Light-duty	5-15	CJ112153A
	通用型 Normal	15-30	CJ112153B
	重型 Heavy-duty	30-50	CJ112153C

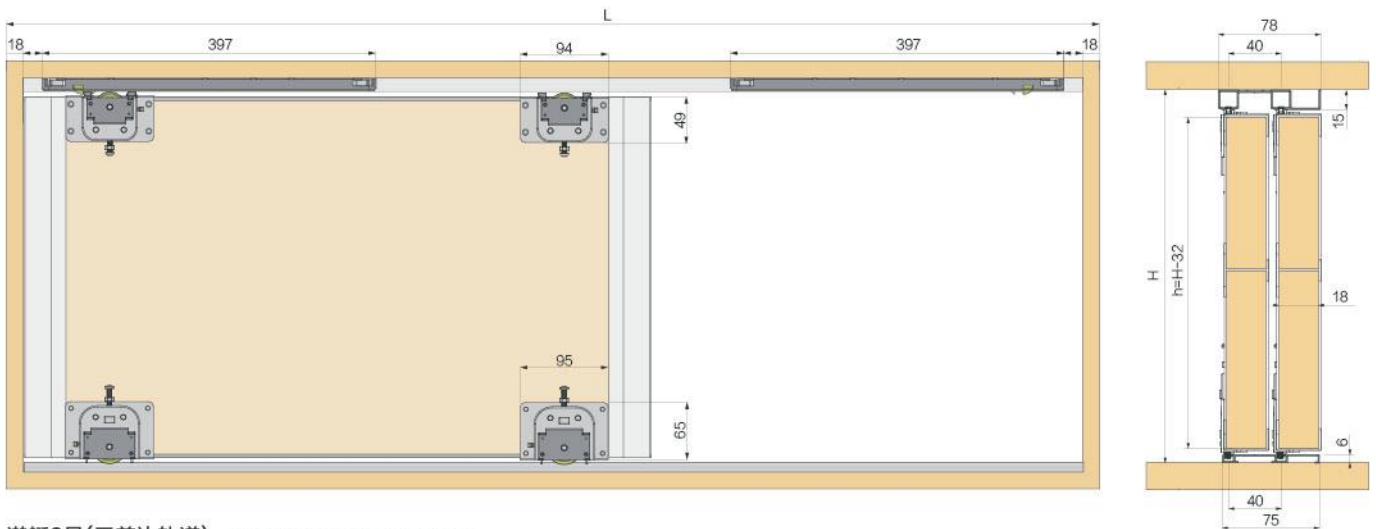
标准配置
STANDARD CONFIGURATION

配件描述 Fitting Description	2门带阻尼标准配置 2 Doors With Damping	3门带阻尼标准配置 3 Doors With Damping
上轮 Upper Roller	CJ112100A	4
下轮 Under Roller	CJ112101A	4
缓冲器 Buffer	轻型 Light-duty TN223A	4
	通用型 Normal TN223B	
	重型 Heavy-duty TN223C	
上轨道(银白) Upper Track (Silver)	XJA160CB	1条 × 2米/条 1pcs × 2m/pc
下轨道(银白) Under Track (Silver)	XJA133AT	1条 × 2米/条 1pcs × 2m/pc
竖框(银白) Vertical Frame (Silver)	XJA134AT	选配 Optional
上下横框(银白) Upper & Bottom Frame (Silver)	XJA135AT	选配 Optional
中横框(银白) Middle Frame (Silver)	XJA136AT	选配 Optional
GB/ST4.2 × 16十字槽沉头自攻钉 GB/ST4.2 × 16 Cross Recess Countersunk head Self-drilling Screw		32
2.5毫米内六角扳手 2.5mm Allen Wrench		1

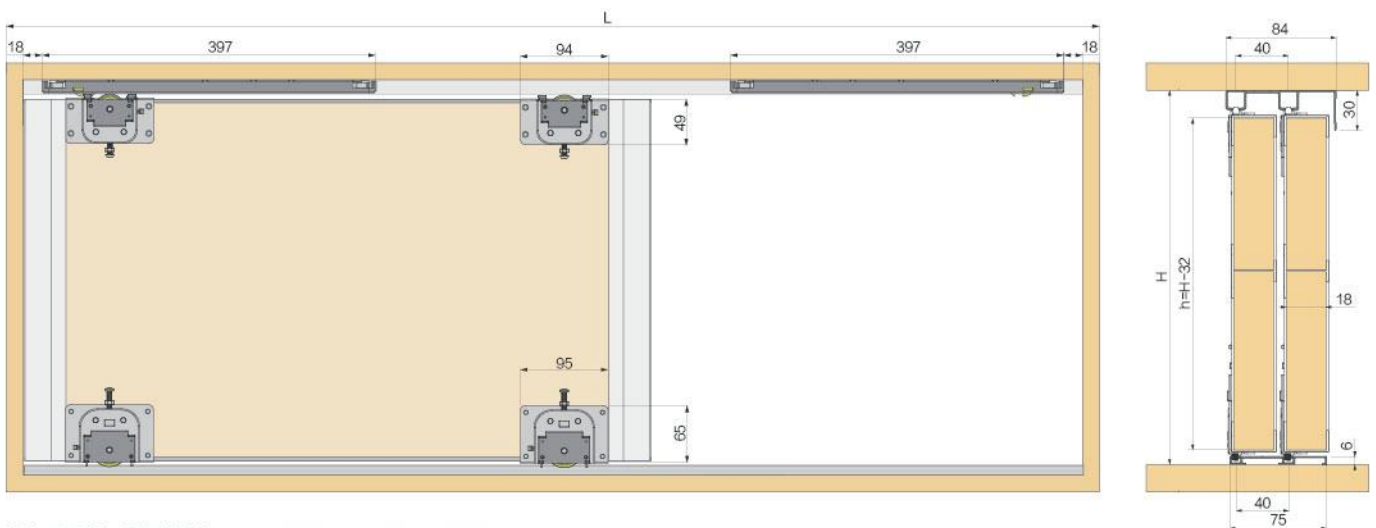
订购说明: 下单时请注明套装型号或详细描述产品名称以及数量, 如“CJ112152A × 20套”或“潜艇3号(有盖边轨道)轻型2门20套”。
Ordering instructions: When place an order, please indicate the suit type or detailed product name and quantity, such as “CJ112152A × 20sets” or “SUBMARINE 3 (WITH COVER) light-duty 2 doors 20 sets”

潜艇3号安装参数

SUBMARINE 3 INSTALLATION PARAMETERS



潜艇3号(无盖边轨道) SUBMARINE 3 (NO COVER)



潜艇3号(有盖边轨道) SUBMARINE 3 (WITH COVER)

