

扬帆4号—大折叠门系统

SAILING 4—LARGE FOLDING DOOR SYSTEM

产品特点:

- 实现折叠滑动开启关闭，无遮挡开启整个柜内空间，提供舒适随性收纳体验
- 承重达30公斤，大大提高折叠门规格限制
- 折叠吊轨结构设计，门体永不下沉

Product Features:

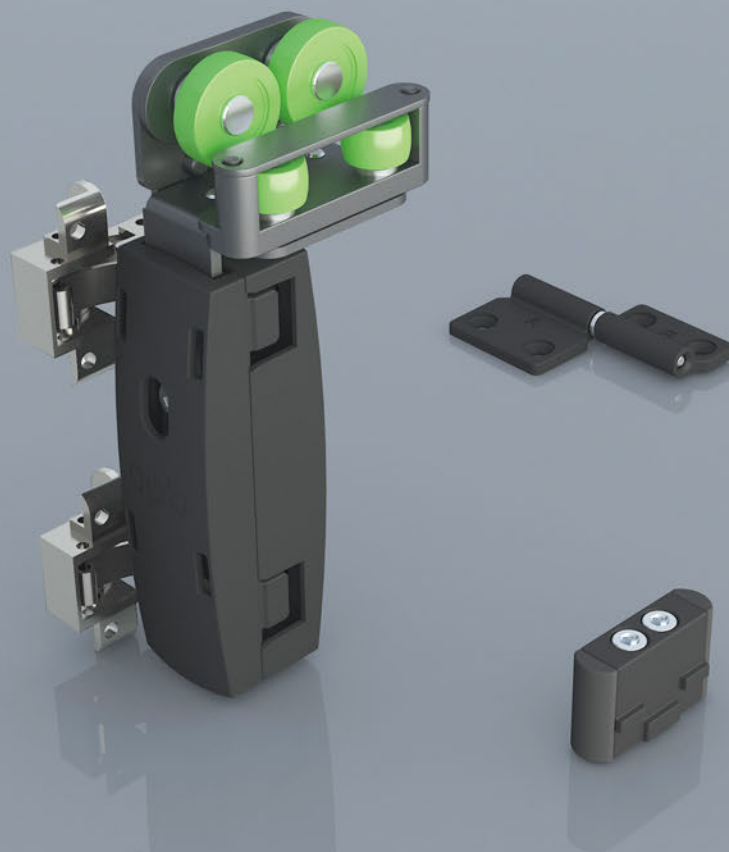
- Folding and sliding opening and closing are realized, opening the entire cabinet space without obstruction, providing a comfortable and casual storage experience.
- The capacity is up to 30 kg, greatly increasing the specification limit of the folding door.
- Folding hanging track structure design, the door never sinks

技术概要:

- 适用于：木门、铝框门
- 单扇门重：单扇门 ≤30kg
- 门宽：250~500mm
- 门厚：铝框门28mm、木门18~25mm

Technical Points:

- **Application:** Wooden door, aluminum frame door
- **Door Weight:** single door ≤30kg
- **Door width:** 250~500mm
- **Door thickness:** aluminum frame door 28 mm、Wooden door 18~25mm





扬帆4号(2门)套装(适用于大折叠铝框门)
SAILING 4 (2 Doors) COMPLETE SET (Suitable for large folding aluminum frame doors)

产品描述 Product Description	门重(kg) Door Weight (kg)	门宽(mm) Door Width (mm)	套装型号 Set Model	包装数量/箱 Quantity/Carton
不带铰链 Without hinge	≤30	250~500	CJ22105A	24
带铰链(14-28mm) With hinge(14-28mm)	≤30	250~500	CJ22105B	25


 扫码观看
安装资料

标准配置
STANDARD CONFIGURATION

配件描述 Fitting Description			不带铰链 Without hinge	带铰链(14-28mm) With hinge(14-28mm)
折叠吊轮 Folding hanging roller		TJ234A	1	1
铰链(14-28mm) Hinge(14-28mm)		TD171A	-	4
限位件 Stopper		TJ237A	1	1
合页 plastic hinge		TJ238A	3	3
上轨道 Upper track		XJA365	选择合适的长度 Select Suitable Length	选择合适的长度 Select Suitable Length
合页打孔模 Drilling mode		PJC03066	3	3