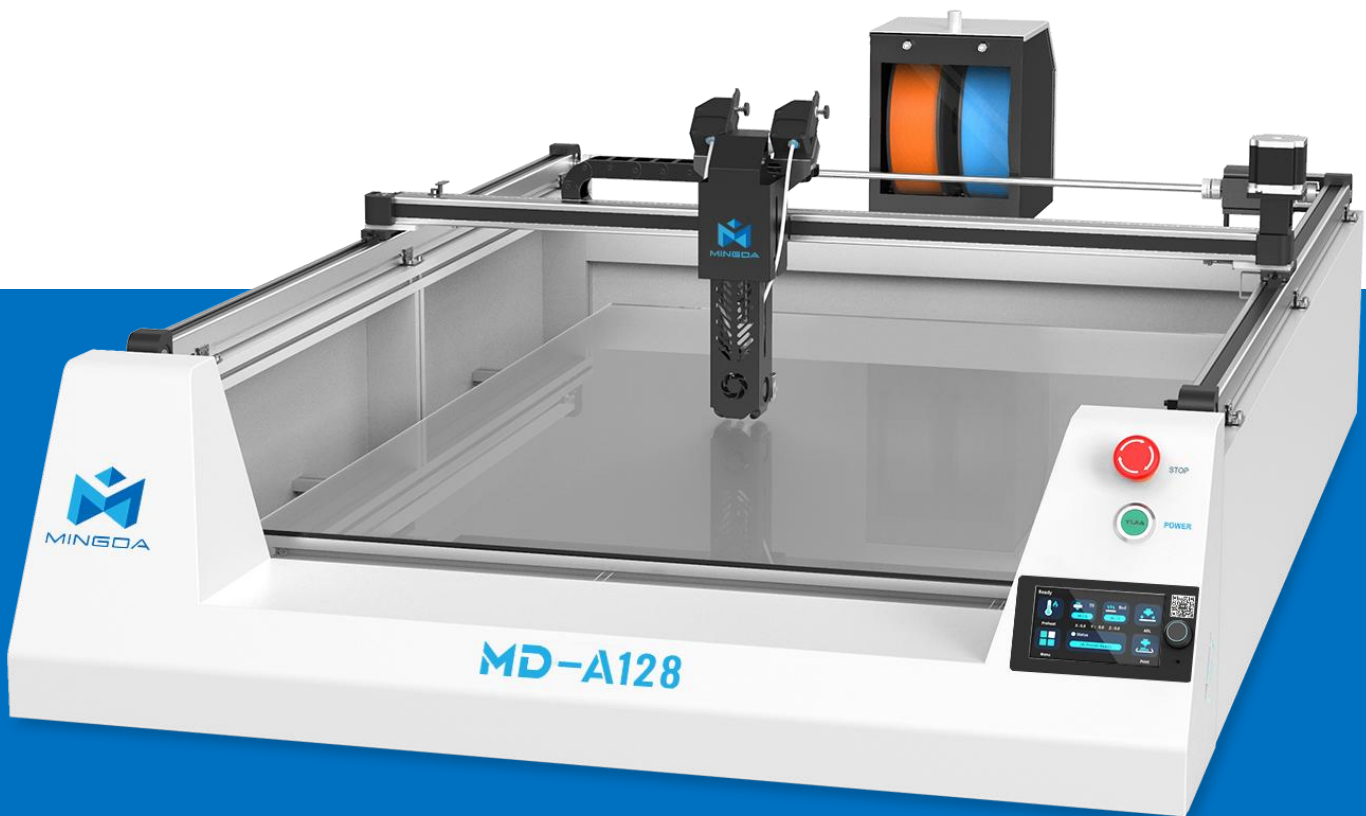


# User Manual

**MD-A128**

**LED Letter 3D Printer**



Shenzhen MINGDA Technology Co., Ltd.

V1.3

# Contents

1. Equipment Information	02
2. Equipment Parameters	03
3. Package Contents	03
4. Adjust the Voltage	04
5. Assemble	05
6. Install the filament	09
7. Printing the Test Files	10
8. Support	11
9. Quality Assurance	12

## Instructions:

1. After receiving your 3D Printer, if any accessories are missing, please contact customer service in time to replace.
2. Do not try to use this 3D Printer in any method not described in the manual, so as to avoid accidental personal injury or property damage.
3. It is strictly forbidden to disassemble or modify this 3D printer without authorization.
4. Please use this 3D printer in a spacious, flat and well-ventilated environment.
5. To avoid affecting the print quality, it is better to use the filament recommended by the manufacturer.
6. Use the specified power supply voltage. Do not connect multiple devices to the printer's power outlet to avoid overload.
7. Make sure the printer is properly grounded, Or it may cause electric shock, fire or electromagnetic interference.
8. Contact your after-sales or local service before disassembling or repairing the printer by yourself. Check the "Support" section in the User Guide.
9. Please do product maintenance regularly to clean the machine from dust, foreign matter on the guide rail, etc.
10. It is recommended to use the power cord that came with the printer. Do not damage, cut or repair the power cord. Damaged power cords present a risk of fire or electric shock. Please replace the damaged power cord with a quality-certified power cord. Do not allow metal or liquid to come into the printer and contact with the internal parts of the printer. It may cause fire, electric shock or other serious accident.
11. Children under 10 years old are not recommended to use this 3D printer.

## Dear MINGDA 3D printer users:

Thanks for your choosing and using our products. For your better use, we recommend that you read this manual carefully before use, and strictly follow the instructions of the manual.

In order to better start the 3D printing journey, you can learn the following information:

MINGDA Official website: [www.3dmingda.com](http://www.3dmingda.com)

The official website of MINGDA contains MD-A128 machine software, assembly and Teaching video on assembling and using, multilingual instructions, model download and FAQ manual. In the process of using the machine, if you encounter any questions or problems not included in this manual, you can fill in the after-sales list on the official website of MINGDA, and we will try our best to solve the problems.

[http://www.3dmingda.cc/single/request\\_after\\_sales\\_service.html](http://www.3dmingda.cc/single/request_after_sales_service.html)

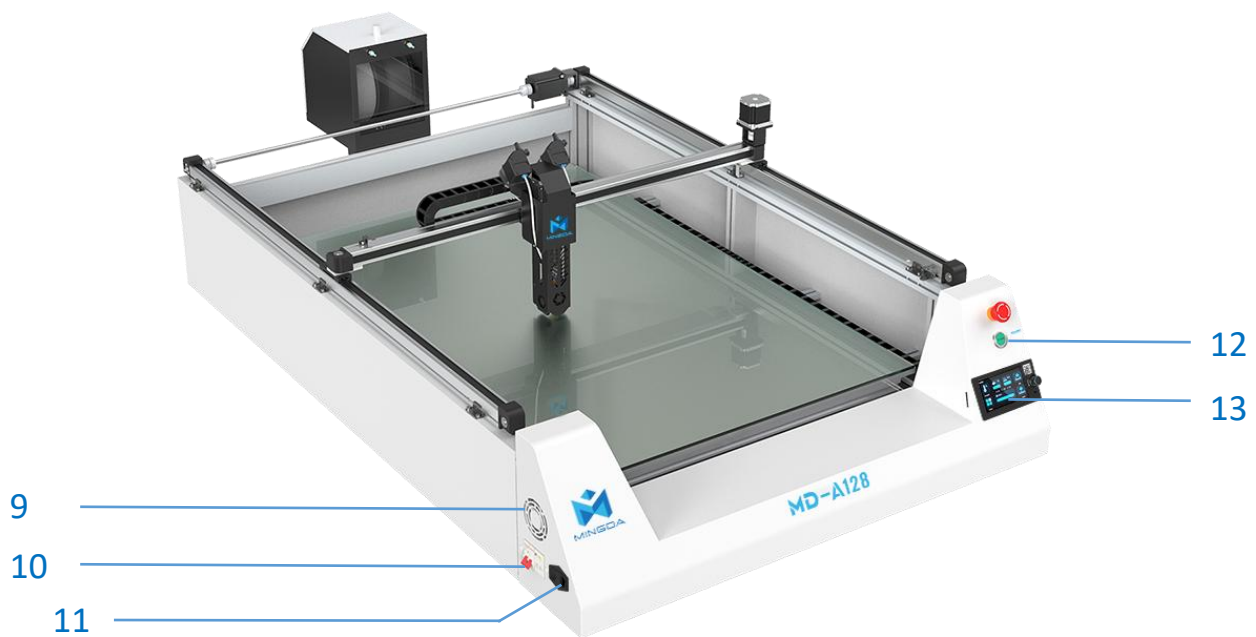
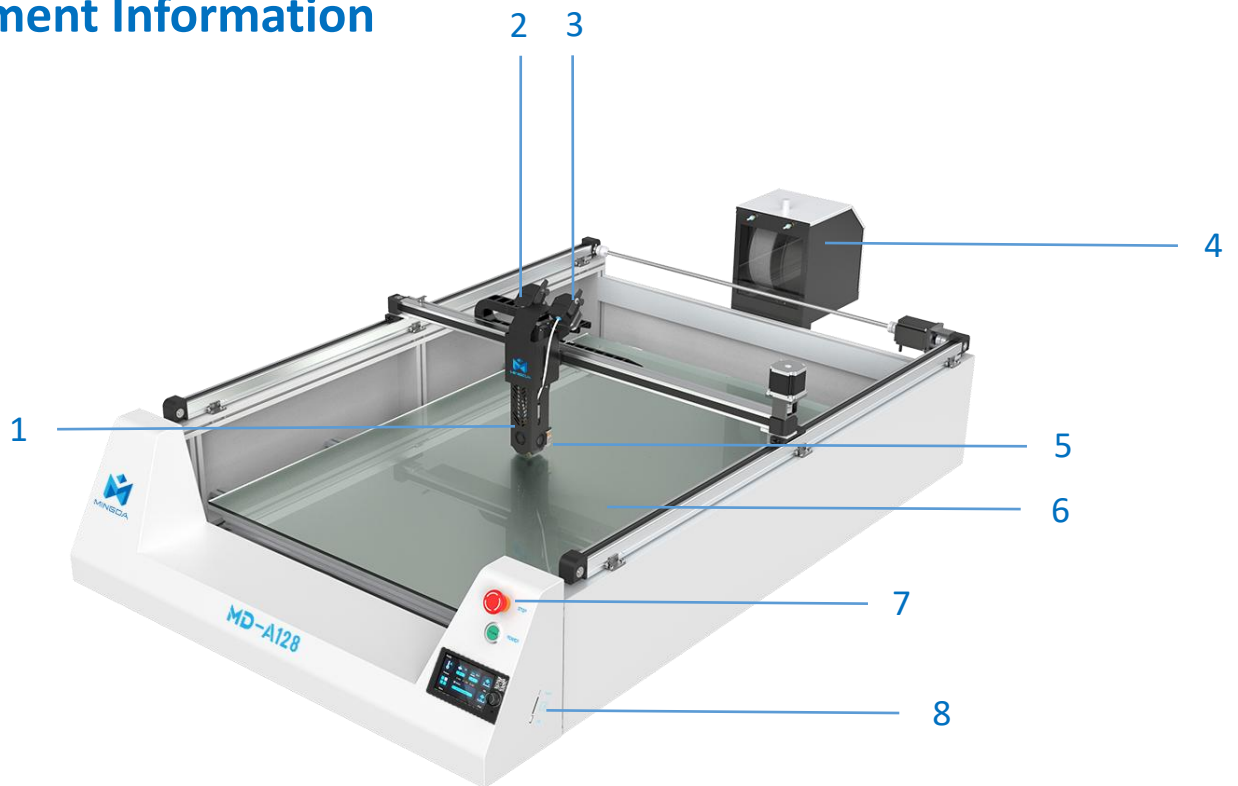


Youtube Channel



Official website

# Equipment Information



1 Printing head

2 Left extruder

3 Right extruder

4 Filament house

5 3D Touch

6 Platform

7 Emergency stop button

8 SD card port

9 Cooling fan

10 Air switch

11 Power Socket

12 Power switch

13 Touching screen

# Equipment Parameters

Model name	MD-A128
Technology	FDM two in one out
Machine size	1054*1613*490mm
Printing size	800*1200*100mm
Printing speed	Recommend 60~100mm/s
Layer height	Recommend 0.2-0.3mm
Printing accuracy	±0.2mm
Nozzle size	Standard 0.8mm nozzle
Connection method	SD Card, U Disk, Type-C
Printing filament	Advertisement filament

## Package Contents



Scraper knife



Diagonal pliers



Power cable



Sleeve



Knife



SD card



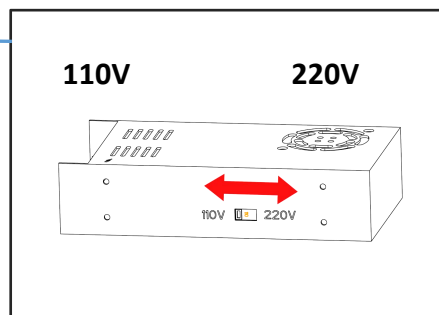
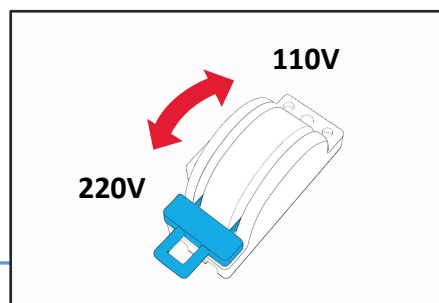
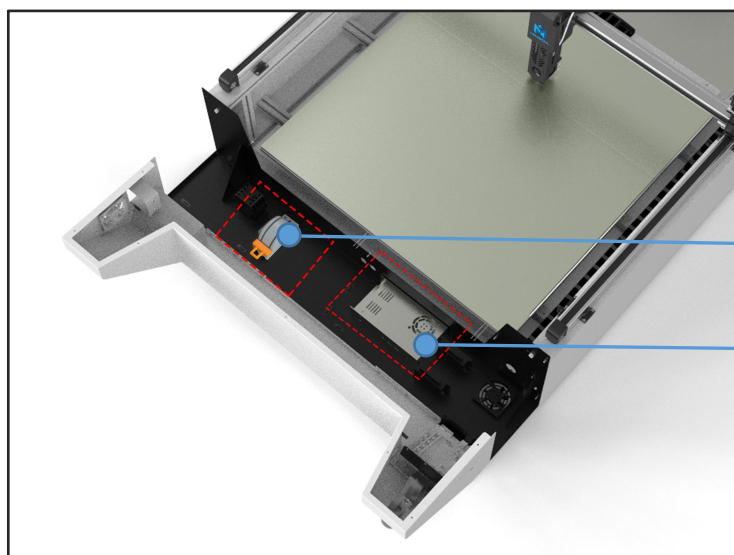
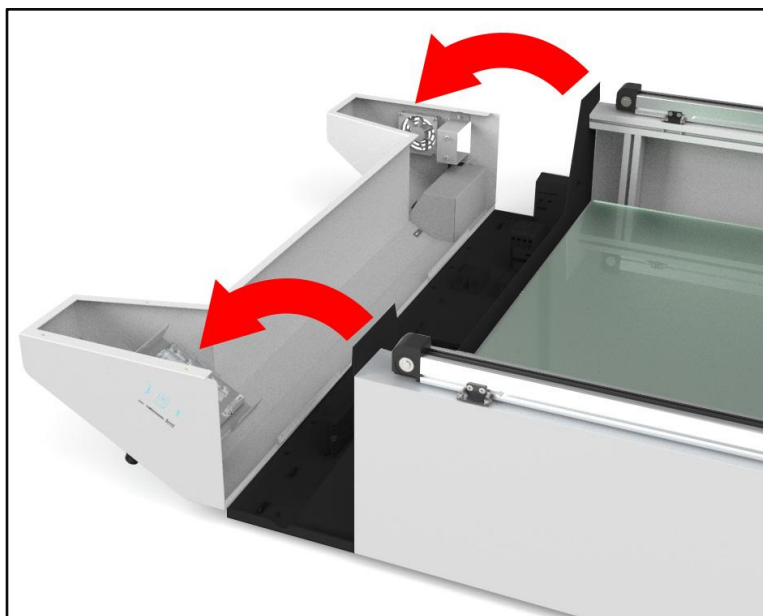
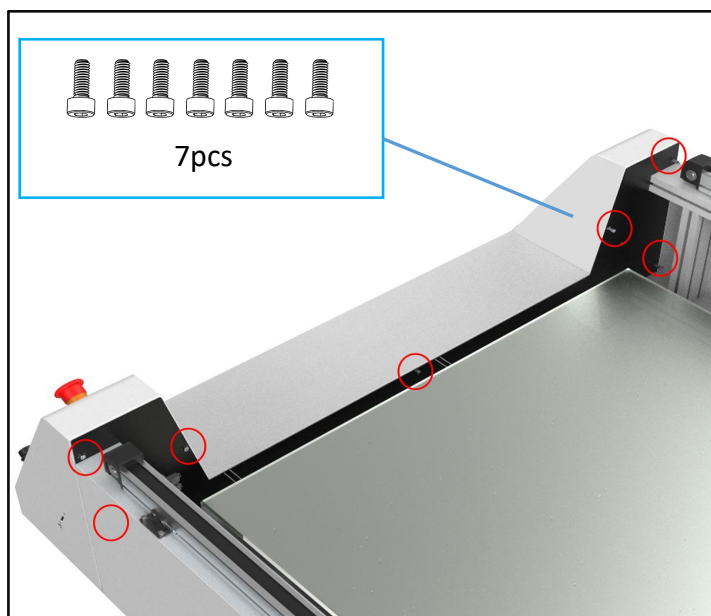
Teflon tube



Card Reader

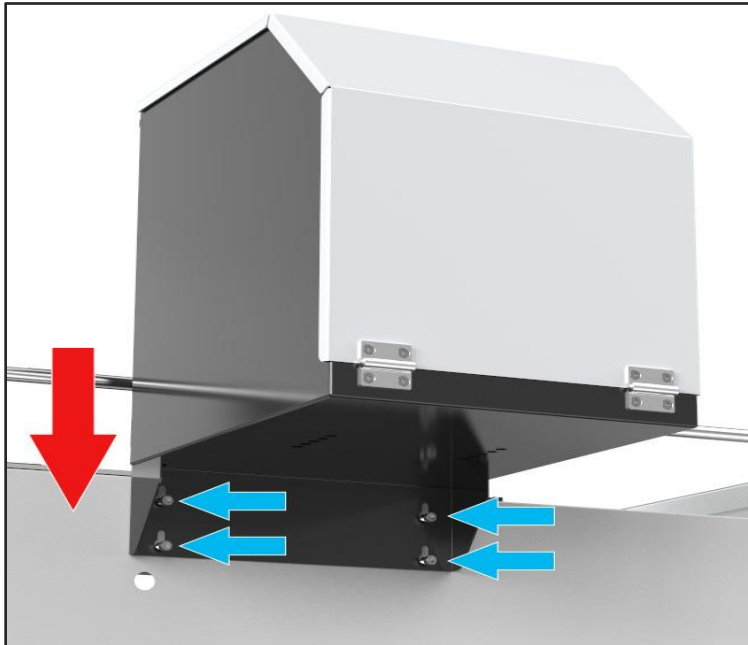
## Adjust the Voltage

**Note:** The power supply has been adjusted according to the local voltage. If you need to adjust the voltage, please follow the picture to operate it.

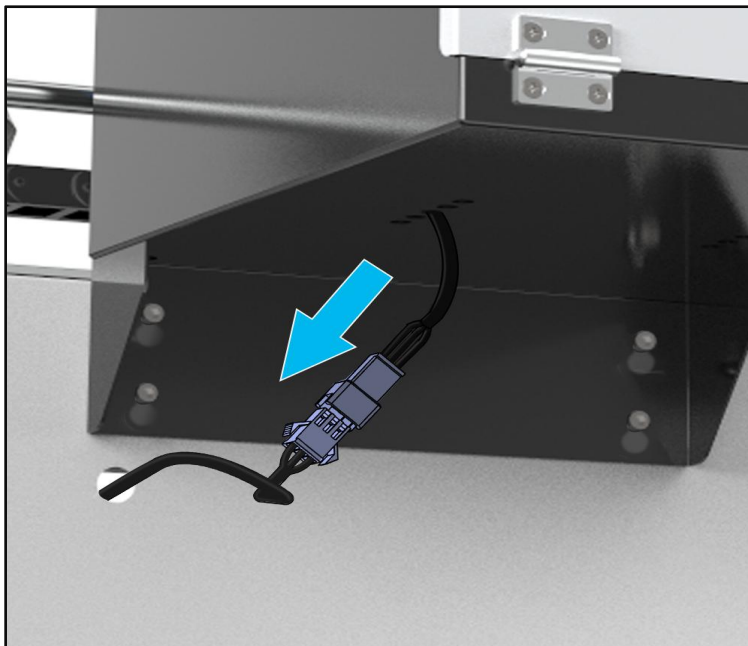


# Assemble

## 1 Installed the filament house

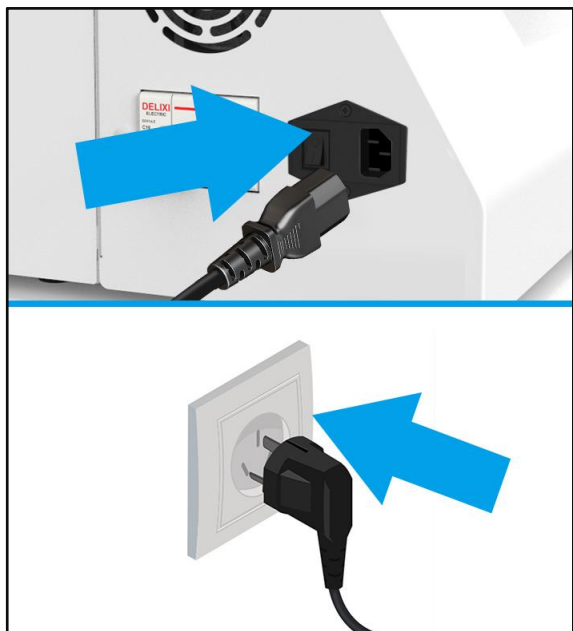


Hang on the filament house and tight the screws



Connect the cables

## 2 Power on



Plug in the power cord



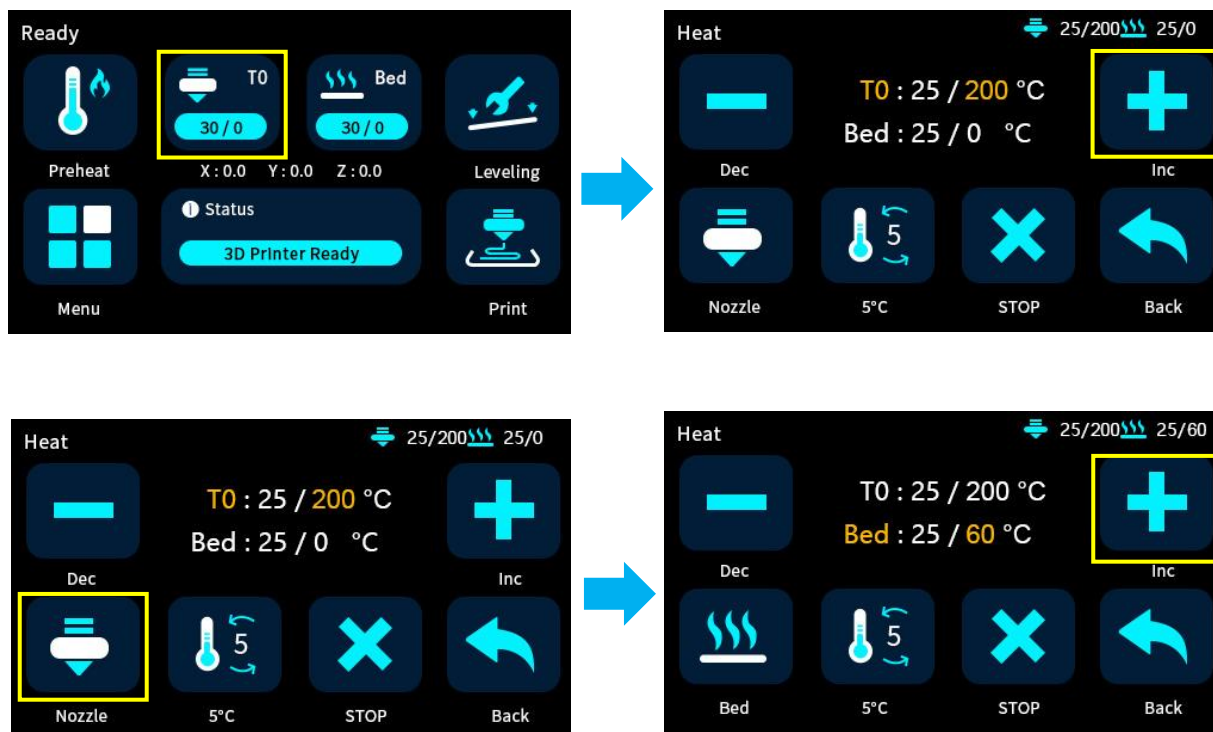
Push air switch



Turn on the emergency stop switch, press the green button to start

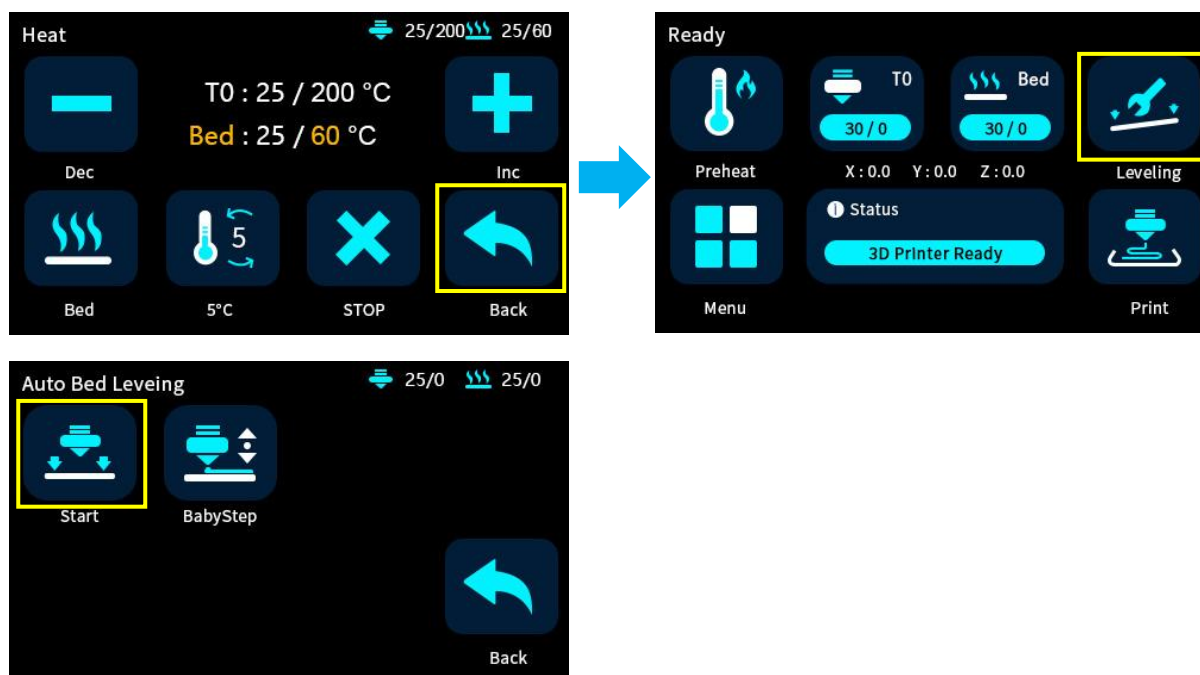


3 Click the heating button , set the nozzle temperature to 220 ° C and bed temperature to 60 ° C.



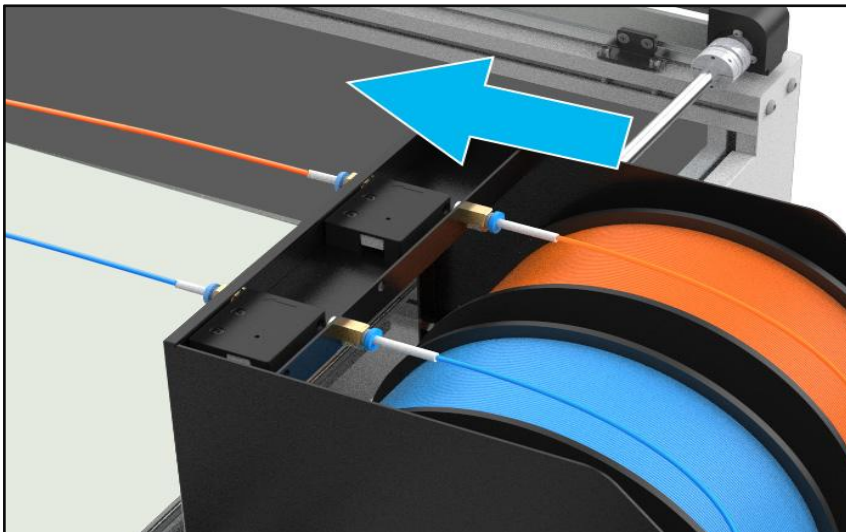
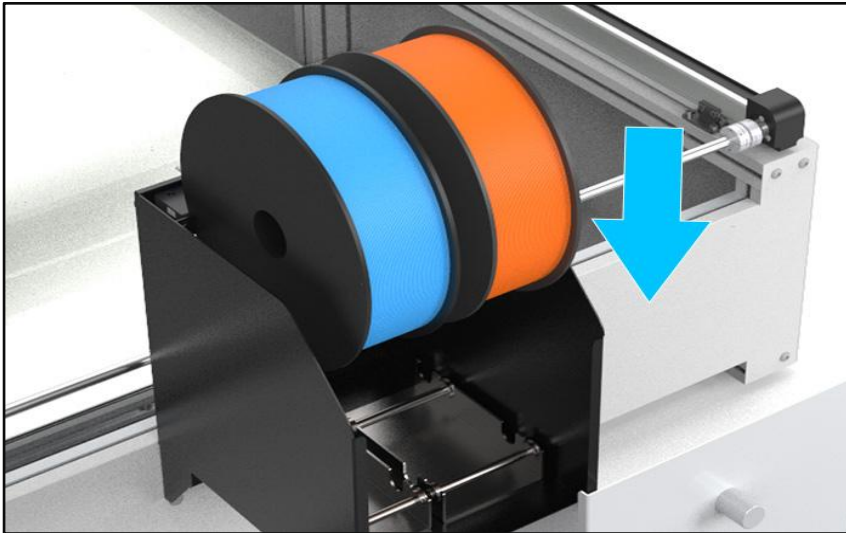
4 Click Back-Leveling-start, Wait for the machine to complete the leveling procedure, save the data.

(Note that if there is a collision during the leveling process, please press the emergency stop switch immediately; During the reset and leveling process, please do not put your hand into the chassis to avoid pinching.)

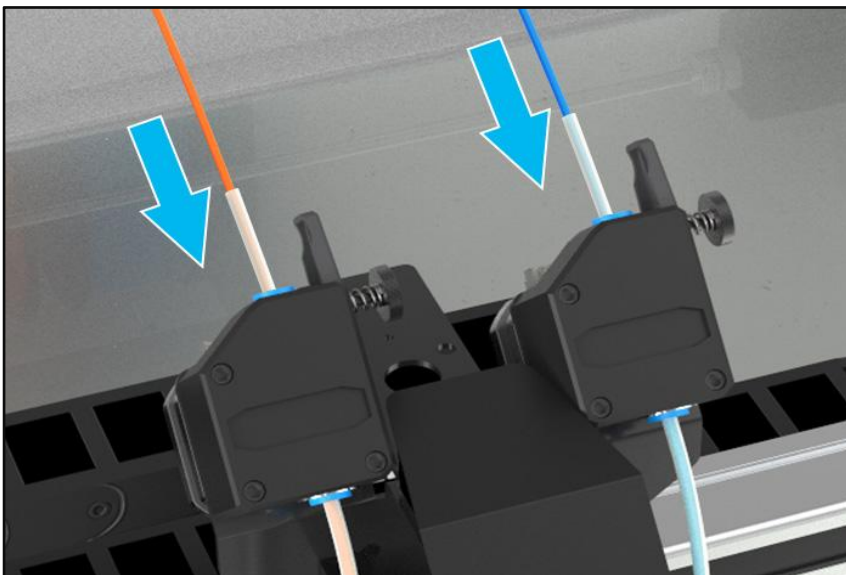


# Install the filament

1. Place two rolls of filament and insert through the filament detector



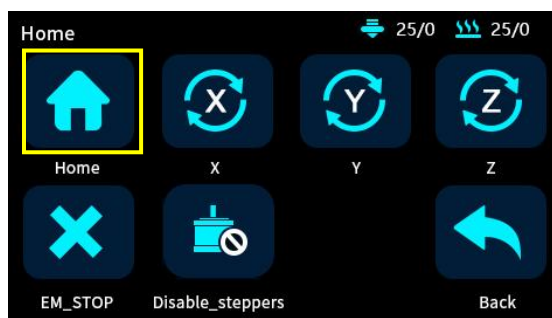
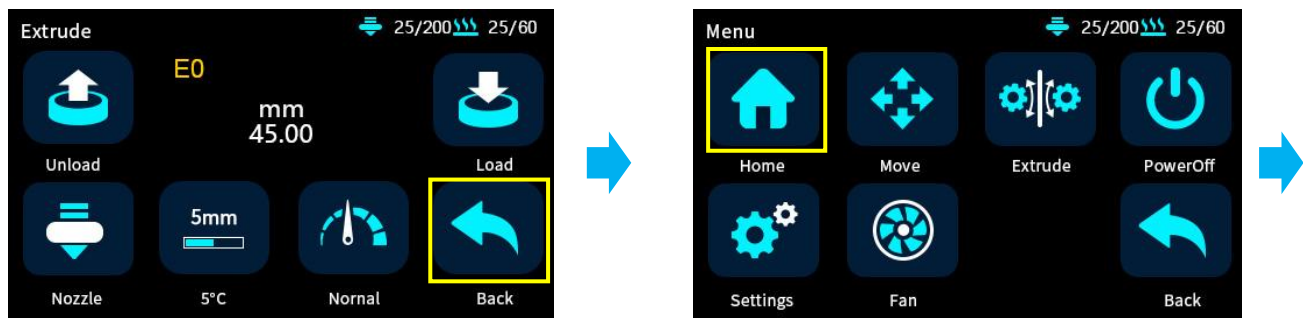
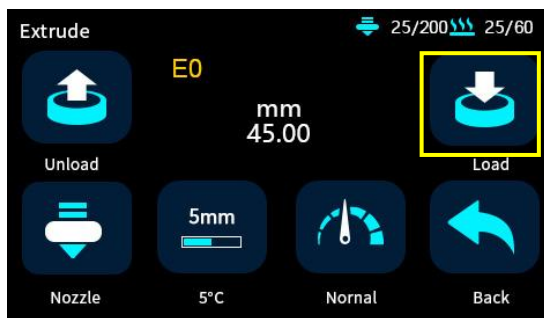
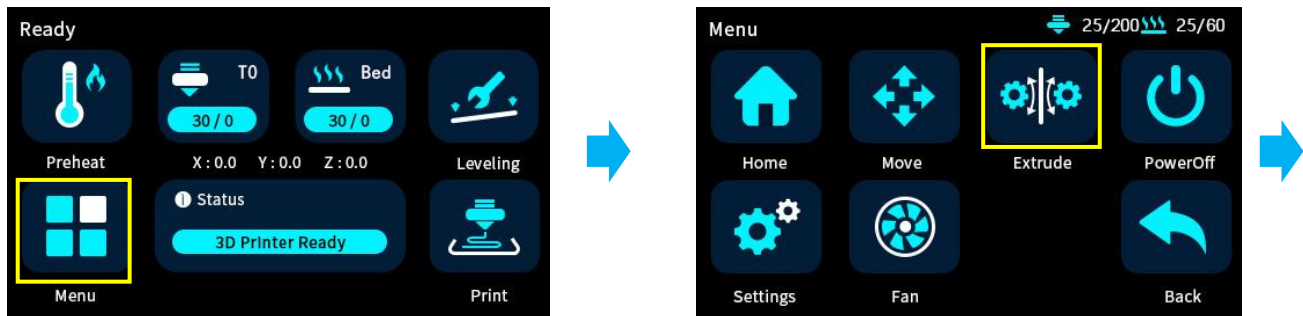
2. Insert the two rolls of filament into the feed port of the left and right extruder




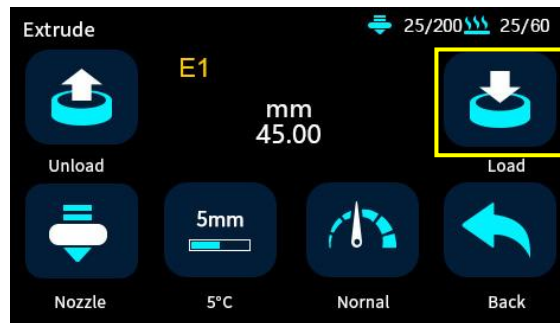
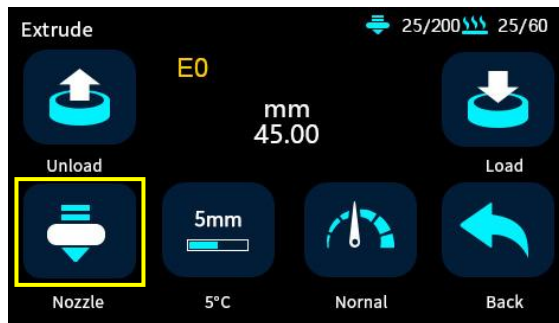
3. Click Meny-Extrude-Load. Keep clicking Load until the filament come out

E0 to the left extruder, E1 to the right extruder . Click nozzle to exchange left and right extruder.

Please Home the printer before switching the Nozzle. Because of two-in-one-out structure, when one filament needs to be load, the other material needs to be unload first. If not home, the original filament will not be unload, and the filament cannot be feed at this time, please home first.



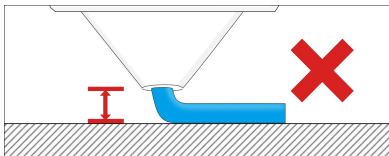
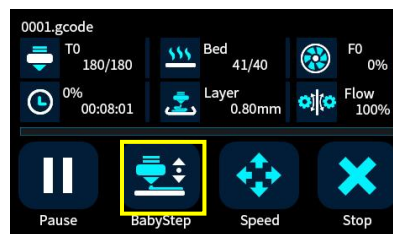
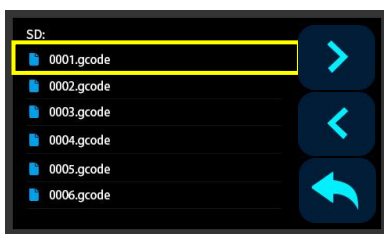
4. Click the nozzle icon  to switch to E1, and the right extruder is working at this time. Keep clicking Load until the filament come out.



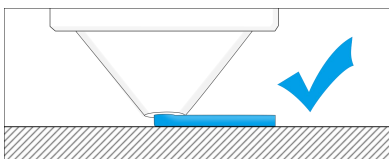
## Printing the Test Files

Click on the Print icon, choose a gcode file which you want to print.

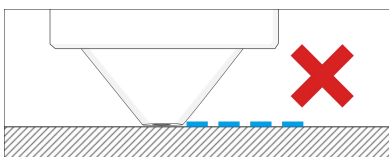
Tip: You can adjust the babystep according to the adhesion of the first layer of filament. After the adjustment is completed, click Save, then you can print directly next time without any adjustments.



If the distance between the nozzle and the platform is too high, the filament will not easy to stick to the platform. Should click "Decrease" until the distance is proper.



Keep a proper distance between the nozzle and the hot bed, so that the filament stick to the hot bed evenly.



If the distance between the nozzle and the platform is too low, the filament will be not easy to feed out smoothly . Should click "Increase" until the distance is proper.

# Support

## Customer Support

[http://www.3dmingda.cc/single/request\\_after\\_sales\\_service.html](http://www.3dmingda.cc/single/request_after_sales_service.html)

## Working Computer Specifications

**Operation system:** MicrosoftWindowsXP、MicrosoftWindowsVista or MicrosoftWindows7

**Processor minimum value :** 2.4 GHz, faster processor could shorten the processing time

**RAM minimum value:** 1GB (WindowsVista or Windows7 is 2 GB) Recommendation: 2 GB

(WindowsVista or Windows7 is 3 GB)

**Hardware installation:** 90 MB monitor graphics resolution minimum value: 1024x768

**Recommendation:** 1280x1024 ( can use the wide-screen )

**Necessary video card:** In line with OpenGL accelerated graphics card Recommendation: OpenGL

hardware support to recommend 128 MB graphics card memory

## MINGDA Limited Warranty Statement

Besides limited warranty, within the maximum range allowed by law. MINGDA or any authorized dealer have not made any other statements or implied guarantee, including marketability and special-purpose applicability of implied warranties. MINGDA has not supplied, undertake or provide, authorized to assume responsibility for it or any other guarantee, including any authorized dealer or other express or implied warranties to the independent third party.

## Quality Assurance

1. We provide a 12-month warranty on 3D printers (excluding the nozzle assembly, glass platform) purchased on or after June 1, 2019 and a 3-month warranty on the nozzle assembly.

2. The warranty period of each product starts from the date of production. Any product with renewed warranty period is subject to the renewed warranty terms.

3. Within the warranty period, we will provide free accessories to replace those damaged during the operation in accordance with the instructions for use which are not caused by user negligence (determined by our professional assessment).

4. We will continue to provide warranty services for any product having been repaired as long as its warranty period has not expired.

5. In case of any problem, you may find the solutions in the instructions for use or search for the solutions on our official website ([www.3dmingda.com](http://www.3dmingda.com)) or contact us via phone or email.

6. We provide free remote technical support for every consumer during the service life of the product. You may request solutions from our after-sales team via phone or email within working hours. For any request submitted beyond the normal working hours, we will reply as soon as possible.

7. Please provide completed after-sales service card or S/N number when applying for the warranty service. Otherwise, warranty services may be refused.

8. We are entitled to refuse warranty claims for any fault or damage due to failure to follow instructions for use, including but not limited to (i) unauthorized modification; (ii) incorrect installation or use; (iii) use of any third-party component; (iv) use of any non-specified software; (v) use of low-quality filament; (vi) use under non-specified environment; and (vii) misuse (overload) or improper maintenance (corrosion or oxidation).

9. We are entitled to refuse to provide warranty services for any fault or damage due to force majeure



Shenzhen MINGDA Technology Co.,LTD  
[www.3dmingda.com](http://www.3dmingda.com)



**Shenzhen MINGDA Technology Co., Ltd**



Tel: 0086-13530306290

Email: [support@3dmingda.com](mailto:support@3dmingda.com)

[www.3dmingda.com](http://www.3dmingda.com)

Address: 3 / F, No. 20, Dahe Industrial Zone, Longhua District,  
Shenzhen, 518110, Guangdong Province, China.