



B9Z (2G-60) Real-time Monitor (Single-use)

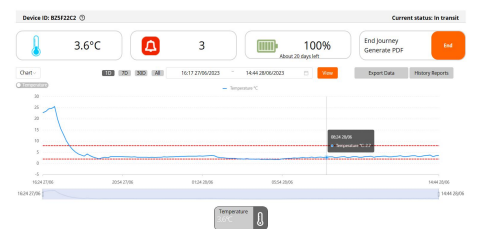
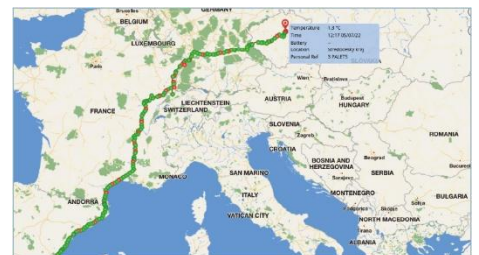


Frigga® B9Z (2G-60) is a Single-use device that monitors temperature, and positioning in real-time. The product works perfectly under the temperature range -30°C to $+70^{\circ}\text{C}$, suitable for air, ocean, rail, as well as road shipments.

Frigga® B9Z (2G-60) is robust, versatile and low cost real-time visibility tool for transportation and warehousing of food supply chain, that incorporates alerting mechanisms to ensure timely corrective actions, and automated data analysis for successful compliance and process improvement.

Key Features and Advantages

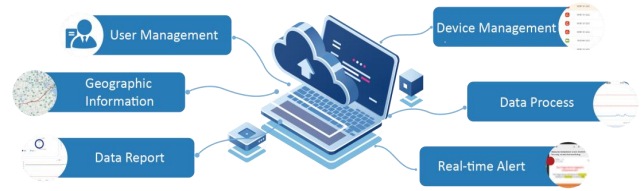
- Real-time monitoring of temperature, and location information, temperature range -30°C to $+70^{\circ}\text{C}$;
- Real-time reporting and alarming of temperature and location information to prevent and deal with risks caused by temperature fluctuations;
- Send real-time alert via Email, SMS, APPs (Android and IOS);
- Dual system design: PDF report can be downloaded via USB port or remotely through the Frigga cloud platform
- Large-capacity local storage, keep recording and store during offline mode .Data retransmission once the signal is restored. Zero data loss.
- Support remote parameter setting, modify alarm threshold, adjust battery life
- Digital display, easy to use.



Frigga® Cloud Platform

Frigga cloud platform provides full real-time supply chain visibility. The platform supports global use, and provides following services throughout the process:

- Real-time temperature alarm
- Real-time location
- Arrival notification
- Dynamic playback of the whole trajectory
- Long-term data storage
- Data analysis report
- Comply with GSP/FDA
- Available on mobile/PC



FRIGGA® B9Z (2G-60) SPECIFICATIONS

Usage Type	Single-use (Max 60days)
Monitor Information	Temperature, Location, Track routes
Temperature Sensor	Internal Texas Instruments (TI) brand Digital Temperature Sensors
Temperature Measurement Range	-30°C ~ 70°C (-22°F ~ 158°F)
Temperature Accuracy Range	±0.5°C (-20°C ~ +40°C); ±1°C for other range
Resolution	0.1°C
Memory Capacity	Max 28800 readings
Location Type	LBS Base Station Positioning
Cellular	2G network.
SIM Card	Internal Embedded (Global Data Roaming)
Shelf Time	12 Months
Use Time	60 Days use time with 60 Min reporting interval
Data Logging Interval	10 Min. (settable via platform)
Data Reporting Interval	10 Min. (10/20/30/60 Min settable via platform)
Environmental Rating	IP64
Cold Chain PDF Report	Get PDF report via USB2.0/ Frigga cloud platform/Frigga Track(Mobile App)
Dimensions/Weight	103 x 61.3 x 23 mm / 120 grams
Certifications	FCC,CE,RTCA/DO-160G,UN38.3,ROHS,WEEE
Storage temperature range	-10°C ~ +55°C