



Frigga® V5-(C)-Plus Real-time Monitor (4G/5G) Single-Use



Next-Generation

Real-Time Monitor for Pharma

Frigga® V5-(C)-Plus is specially designed for pharmaceutical cold chain monitoring. It is a major technological innovation and will take pharmaceutical cold chain monitoring to the next level.

Frigga® V5-(C)-Plus product is slim design. Equipped with a waybill management system, the three-button brings an excellent user experience. The screen is 24/7 always on and able to rotate, intelligently adapts to various usage scenarios, such as dry ice, pharma box, and liquid nitrogen tanks.

Frigga® V5-(C)-Plus delivers excellent signal performance to secure data transmission, even when there is no signal, users are able to connect Frigga Apps to upload data to the platform, so as to export complete reports.

Integrating self-developed Frigga® IoT Cloud Platform, Frigga® Track Apps, as well as API Integration, users can easily check shipment data anywhere at anytime. Combined with customized alert notifications to reduce cargo damages, and increased visibility for further process improvement.

Key Features and Advantages

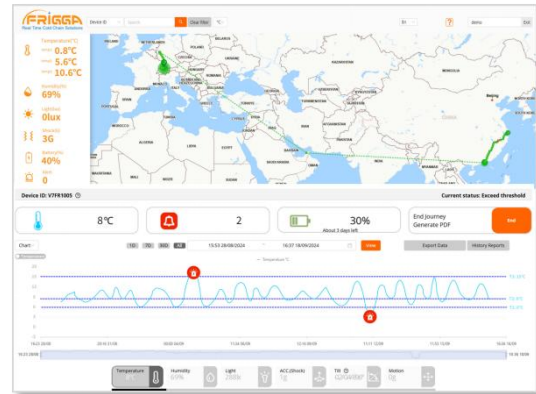
- 16.9 mm slim design, perfectly embedded in the pharma cold box;
- Multi-level alarm systems, support single & accumulative, pre-alarm;
- Super-Bluetooth gateway solution, support $\pm 150M$ in open space;
- Track shipment via QR code, 24/7 always on LCD, no need to press a button to wake up the screen;
- Rotatable LCD, the probe can stretch from the upside or underside of the device;
- Waybill management system on screen to show more logistics information;
- Self-developed algorithm & silent recording mode, support remote start, parameter setting, and PDF report export;
- Dual communication system, when there is no signal, use Frigga APP to upload data to the platform, zero data loss;
- 5-Mode positioning technology, includes GPS, A-GPS, LBS, Wi-Fi Position, Ocean tracking;
- Temperature range $-30^{\circ}C$ to $+70^{\circ}C$, real-time monitoring of temperature, humidity, light, Acceleration (shock), tilt, location, and motion status;
- 3-axis acceleration & tilt detection, analyze crash, tip-over events;
- Auto flight mode supported;
- Multi-point calibration report for each device;
- Real-time alerts to receivers via Email, SMS, APP (Android and iOS).



Frigga is a fast-growing real-time supply chain solutions company. We are focused on facilitating the process of making supply chains more agile, resilient, and sustainable around the world, so that our clients can deliver their products to those in need, with zero-waste. With close to 2 decades of IoT visibility development and manufacturing experience, Frigga has become a reliable and trustworthy partner for many companies in the pharmaceutical, perishables and industrial industries. Contact us for more information. All Rights Reserved.

Frigga cloud platform provides full real-time supply chain visibility. The platform supports global use, and provides following services throughout the process:

- Comply with GxP, FDA 21 CFR part 11, ISO27001, ISO9001;
- Multi-level alarm systems;
- Dashboard and data analysis for Pharma;
- Multi-leg shipment management;
- Support ocean tracking , ETA/ETD and ocean location;
- Support remote start, parameter setting, and PDF report export;
- Data traceability and long-term cloud storage;
- Multi-level account management;
- Audit log, report endorsement;
- Calibration report, available on the platform.



Specifications	V5-(C)-Plus-(Li)-60	V5-(C)-Plus-(Li)-120	V5-(C)-Plus-(Non-Li)-60	V5-(C)-Plus-(Non-Li)-120
Device Type	Single-Use			
Monitor Info.	Temp., Humidity, Light, Acceleration (Shock), Tilt, Location, Motion			
Button Info.	Stop/Page Down, Status, Start/Page Up			
LCD info.	Max/Min/Avg/MKT Temp., Multi-level Chart, Alarm Threshold Shipment Info., QR Code, Recording Interval, Data Readings, Unsend Readings			
Connector Info.	Water proof Type-C USB, charge device & export report			
Location Method	5-Mode positioning technology, includes GPS (GPS, BeiDou, GLONASS), A-GPS, Base Station Positioning, Wi-Fi Position, Ocean Tracking.			
Temp. Range	-30°C to +70°C (-22°F to +158°F)			
Temp. Accuracy	±0.5°C (-20°C to +40°C); ±1°C for other range			
Humidity Range	5%-95%RH			
Humidity Accuracy	Range ±3%(20%~80%RH); ±5% for other range			
Light Sensor Range	0-52,000 Lux, detect door open			
Cellular	Global LTE 4G/5G, fallback 2G network			
Bluetooth Gateway	Support working with Frigga beacons			
Memory Capacity	Max 28,800 readings			
SIM card	Internal Embedded (Global Data Roaming)			
Battery	Li-ion Battery		Non-lithium Battery	
Shelf Life	12 Months		6 Months	
Use Time	10-60 days (Based on reporting interval)	10-120 days (Based on reporting interval)	10-60 days (Based on reporting interval)	10-120 days (Based on reporting interval)
Recording Interval	10 Min （10/20/30/60 Min, settable via platform）			
Reporting Interval	10/20/30/60/ Min, settable via platform	10/20/30/60/120 Min, settable via platform	20/40/60/120 Min, settable via platform	20/40/60/120/240 Min, settable via platform
Environmental Rating	IP65			
Dimensions/Weight	105mm x 65mm x 16.9mm, 130g;		105mm x 65mm x 19.9mm, 170g	
Certifications	FCC, CE, RTCA/DO-160G, UN38.3, RoHS, WEEE, EN12830, IATA Compliance, 60+ Major Airlines Approval			