



Frigga® V5-(G)-Plus-(Li) Real-time Monitor (4G/5G) Single-Use



The First Probeless Dry Ice

Real-Time Monitor for Pharma

Frigga® V5-(G)-Plus is the first real-time monitor that could be placed directly into dry ice environments. It is truly a technological breakthrough that entirely change how pharma industry monitor their shipments in ultra-low temperature conditions.

The Probeless Dry Ice Monitor helps assure data security, users no need to worry about data loss due to broken probe. The ultra-low temp. resistant device shows strong performance under temperature -80°C, perfectly avoid the mis-placement accidents caused by human error. The powerful real-time monitor enables fast and easy reading of data in real-time remotely via Frigga platform or Apps, no need to connect to PC to download data, smarter decisions could be made immediately to reduce risks and ensure compliance.

Integrating self-developed Frigga® IoT Cloud Platform, Frigga® Track Apps, as well as API Integration, users can easily check shipment data anywhere at anytime. Combined with customized alert notifications to reduce cargo damages, and increased visibility for further process improvement.

Key Features and Advantages

- The first Probeless Dry Ice real-time temperature monitor;
- Multi-level alarm systems, support single & accumulative, pre-alarm;
- Track shipment via QR code, 24/7 always on LCD, no need to press a button to wake up the screen;
- Waybill management system on screen to show more logistics information;
- Self-developed algorithm & silent recording mode, support remote start, parameter setting, and PDF report export;
- Dual communication system, when there is no signal, use Frigga APP to upload data to the platform, zero data loss;
- Temperature range -95°C to +70°C, real-time monitoring of temperature, light, Acceleration (shock), tilt, location, and motion status;
- 3-axis acceleration & tilt detection, analyze crash, tip-over events;
- Auto flight mode supported;
- Multi-point calibration report for each device;
- Real-time alerts to receivers via Email, SMS, APP (Android and iOS).

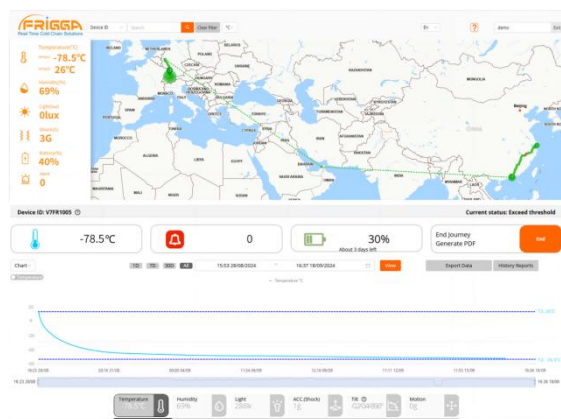


Frigga is a fast-growing real-time supply chain solutions company. We are focused on facilitating the process of making supply chains more agile, resilient, and sustainable around the world, so that our clients can deliver their products to those in need, with zero-waste. With close to 2 decades of IoT visibility development and manufacturing experience, Frigga has become a reliable and trustworthy partner for many companies in the pharmaceutical, perishables and industrial industries. Contact us for more information. All Rights Reserved.

Frigga®Cloud Platform & Mobile APPs

Frigga cloud platform provides full real-time supply chain visibility. The platform supports global use, and provides following services throughout the process:

- Comply with GxP, FDA 21 CFR part 11, ISO27001, ISO9001;
- Multi-level alarm systems;
- Dashboard and data analysis for Pharma;
- Multi-leg shipment management;
- Support ocean tracking, ETA/ETD and ocean location;
- Support remote start, parameter setting, and PDF report export;
- Data traceability and long-term cloud storage;
- Multi-level account management;
- Audit log, report endorsement;
- Calibration report, available on the platform.



| Specifications | V5-(G)-Plus-(Li) |
|----------------------|---|
| Device Type | Single-Use |
| Monitor Info. | Ultra-Low Temp., Light, Acceleration (Shock), Tilt, Location |
| Button Info. | Stop/Page Down, Status, Start/Page Up |
| LCD info. | Max/Min/Avg/MKT Temp., Multi-level Chart, Alarm Threshold Shipment Info., QR Code, Recording Interval, Data Readings, Unsend Readings |
| Connector Info. | Water proof Type-C USB, charge device & export report |
| Temp. Range | -95°C to +70°C (-139°F to +158°F) |
| Temp. Accuracy | ±0.5°C (-20°C to +40°C); ±1°C for other range |
| Light Sensor Range | 0-52,000 Lux, detect door open |
| Cellular | Global LTE 4G/5G, fallback 2G network |
| Memory Capacity | Max 28,800 readings |
| SIM card | Internal Embedded (Global Data Roaming) |
| Battery | Li- Metal |
| Shelf Life | 6 Months |
| Use Time | Up to 30 days |
| Recording Interval | 10 Min (1/2/5/10/20/30/60 Min, settable via platform) Note: Devices keep recording under ultra low temperature. |
| Reporting Interval | 10/20/30/60/120/240 Min, settable via platform Note: Devices will report data to cloud platform when temp. reaches to -30°C from ultra-low temp. environments. |
| Environmental Rating | IP65 |
| Dimensions/Weight | Li: 105mm x 65mm x 19.9mm, 170g; |
| Certifications | FCC, CE, RTCA/DO-160G, UN38.3, RoHS, WEEE, EN12830, IATA PI970 II, 60+ Major Airlines Approval |