



PRODUCT: Chip Module Initialization Machine

MODEL: PTM-120B



OVERVIEW

PTM-120B is an upgrade product designed for the increasing production requirement of chip encapsulation & testing factories and smart card manufacturers. The brand-new design enables operators to switch chips production between 6PIN and 8PIN within 60 seconds.

It integrates short-circuit punching, open and short test, chip initialization & pre-personalization as well as reject chip punching and marking. Modular design can meet your different production requirements and maximize decreasing your investment cost.

PTM-120B can be applied to contact/contactless and dual interface chip initialization, and also can be customized according to the demands for various chip production.

ADVANTAGES

- **Unique Patented Technology**
It only takes 60s to switch production tasks between 6PIN and 8PIN contact chip.
- **High-performance Reader**
The top Chinese industrial-class reader developed with open/short test function is stable and high cost-effective.
- **120Heads Ensure High Throughput**
Max. throughput 99,000UPH for 6PIN chip;
Max. throughput 71,000UPH for 8PIN chip.



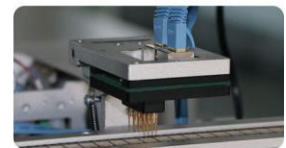
- **Modular Design**
Each module can work independently or be combined on demand.
- **Unrestricted Workplace**
Free of production site due to electric driving design without external air supply.

CONFIGURATIONS

- **Unwinding Module**
 - It is convenient to adjust the position of driving tray and driven tray to meet the needs of different unwinding directions. It is compatible for the trays with 12.6MM and 38MM diameter of axle.
- **Initialization Module**
 - It realizes fast switch between 6PIN and 8PIN chip production; 120 heads at most can be configured simultaneously; Contact/contactless and dual interface chip module initialization can be achieved; The module can be set up with a standalone style.
- **Re-Initialization Module**
 - 2 sets of contact heads or 3 sets of contactless heads are equipped for automatic re-initialization of failed chips, which can reduce the rejection rate.
- **Reject Chip Punching Module**
 - Realizing reject chip punching and the punching position is set up flexibly via software instead of manual adjustment, which greatly improve punching precision and production efficiency; The module can be set up with a standalone style.
- **Rewinding Module**
 - Rewinding and packing the personalized tapes with guard band; The module can be set up with a standalone style.
- **Short-circuit Punching Module (Optional)**
 - Realizing chips short-circuit disconnection; Module tapes with different specifications can be punched by quick replace of punching mould; The module can be set up with a standalone style.



Initialization



Re-Initialization

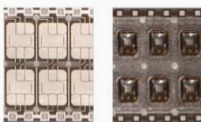


Reject Chip Punching

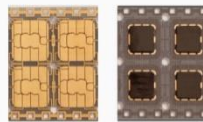


Short-circuit Punching

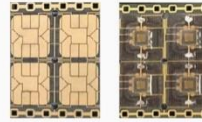
APPLICATION SCOPE



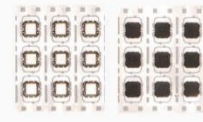
6PIN Contact Chip Module



8PIN Contact Chip Module



Dual Interface Chip Module



Contactless Chip Module

OPTIONAL ACCESSORIES



Contactless chip test suite



Contact chip test suite



Tape connector



THROUGHPUT TABLE

Throughput of Contact Chip (120 Heads)

Throughput(UPH)	Perso Time (s)	0	5	10	15	20	25	30	35	40
	8PIN		71000	39000	26000	20000	16000	13000	11000	10000
6PIN		99000	46000	30000	22000	17000	14000	12000	10000	9000

SPECIFICATIONS

	Including short-circuit punching module	Excluding short-circuit punching module
Dimension	▪ 4750mm x 840mm x 1960mm	▪ 3800mm x 840mm x 1960mm
Weight	▪ 800kg	▪ 650kg
Power Supply	▪ 220V (-5% ~ +10%), 50Hz, 4KW	▪ 220V (-5% ~ +10%), 50Hz, 2KW
Maximum Throughput	▪ 60,000UPH	▪ 99,000UPH (6PIN)
Short-circuit Punching Throughput	▪ Max. throughput 60,000UPH(14 chips/punch)	
Noise	▪ <50dB	
Operation Temperature	▪ 23°C ± 3°C	
Operation Humidity	▪ 50 ± 10%	
Chip Module Specification	▪ M2 and M3	
Communication Interface	▪ Ethernet	