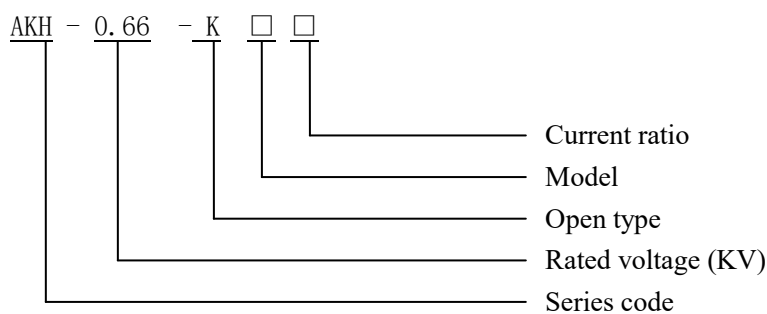


## AKH-0.66/K- $\Phi$ series open type current transformer

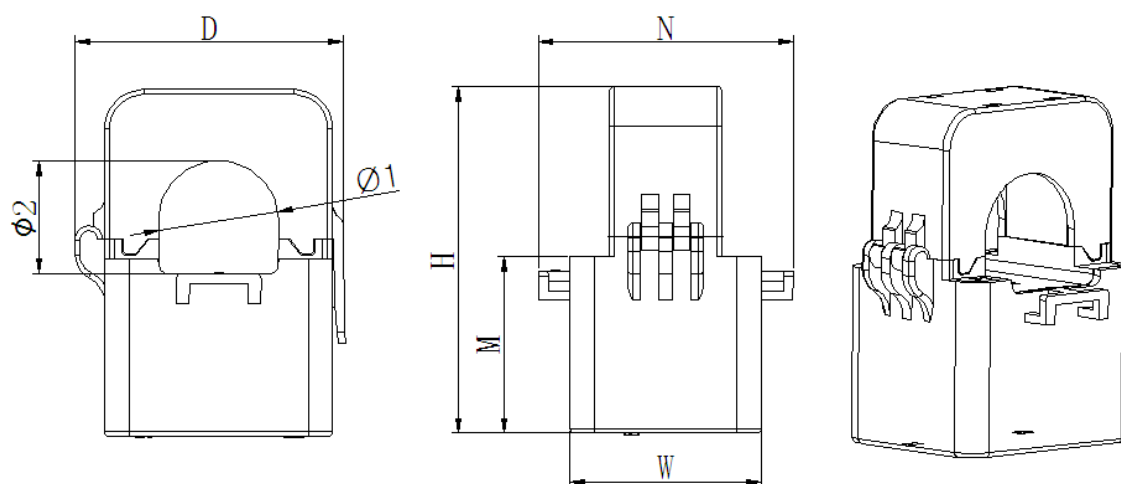
### 1. Product characteristics

This current transformer is beautiful in appearance, easy to install and connect. It is mainly used in power operation and maintenance and power transformation projects. It usually outputs small current signals such as 0-100mA. It has the advantages of small size, high accuracy, strong carrying capacity and convenient installation. It can be used in conjunction with AMC16 multi-loop monitoring instrument.

### 2. Model description



### 3. Size



**Notice:** The secondary lead of transformer is RV wire, and the standard wiring length is 2m +10cm.

Type	Outline size (mm)					Perforation size (mm)		Tolerance (mm)
	W	H	D	M	N	Φ1	Φ2	
K-Φ10	27	44	32	25	36	10	9	±1
K-Φ16	31	50	36	27	42	16	17	
K-Φ24	39	71	46	36	52	24	23.5	
K-Φ36	42.5	82	58	40	56	33.5	35	

#### 4. Specification and parameter comparison table



Type	Rated current ratio	Accuracy	Number of piercing turns	Perforation size (mm)	withstand voltage
		Class 0.5			
K-Φ10	5A/2.5mA	10VA	1	Φ10	3kV
K-Φ16	100A/40mA	10VA		Φ16	
K-Φ24	250A/40mA	10VA		Φ24	
K-Φ36	400A/40mA	10VA		Φ36	

#### 5. Installation mode

