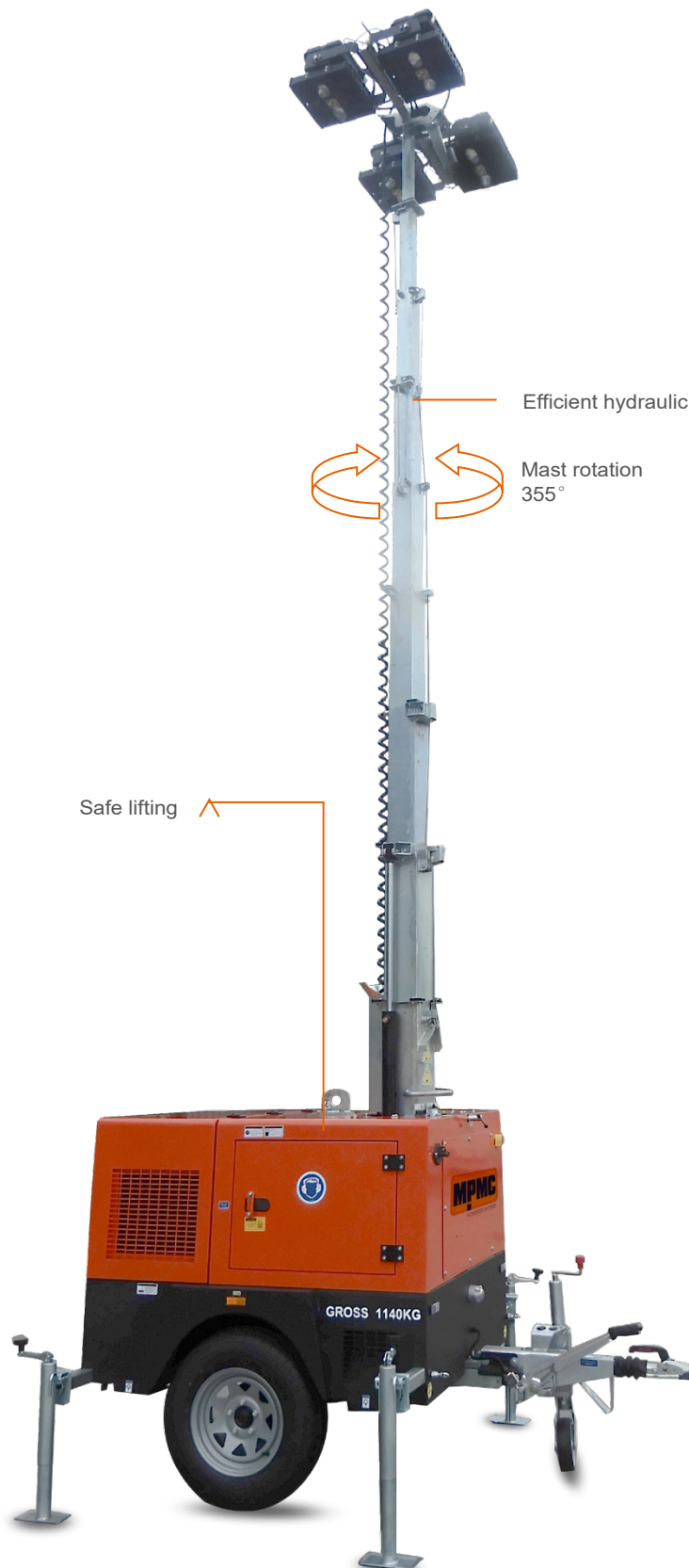
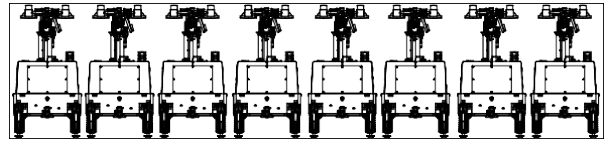


MLT4KD-4000LHS-1

Powered by Kubota

8unit / 40 'HC. CONTAINER



Efficient hydraulic lifting system with rapid telescopic deployment



Mast rotation
355°

✓ Highlights



Less fuel consumption. Longer run-time



Simple control system



High efficiency

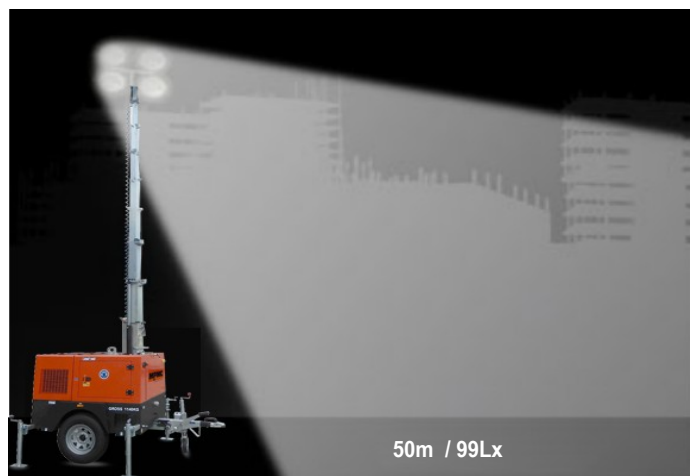


Sturdy and durable

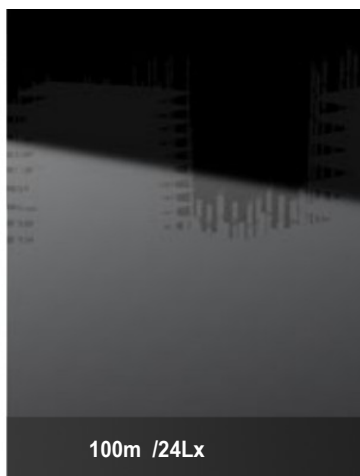


Max height 9.5m





50m / 99Lx



100m / 24Lx



150m / 10Lx

Lighting Tower Technical Data

| | |
|-------------------------------|---------------------|
| Power Package Rated Power | 5.17kW |
| Number & Power of Lamp | 4×1000W |
| Rated Frequency / Speed | 50Hz / 1500 rpm |
| Rated Voltage | AC 230V |
| Noise | 73dB(A) @7M |
| Mast-Maximum Height | 9.5m |
| Mast Lifting & Extension | Hydraulic Operation |
| Tower leg type | Manual |
| Trailer Load bearing | 1200KG |
| Trailer type | On road type |
| AUX. Power output | 16A/3P Socket |
| Rotation angle range of light | 355° |
| Wind resistance grade | 100km/h |
| Recommended use environment | Level ground |

Lamp

| | |
|---------------------|-------------------|
| Number×Power | 4×1000W |
| Lamp type | Metal halide lamp |
| Protection Glass | IP54 |
| Luminous Efficiency | 110Lm/W |
| Color Temperature | 4000 K |
| Voltage | AC 230V |
| Lamp Service Life | 10000hrs |

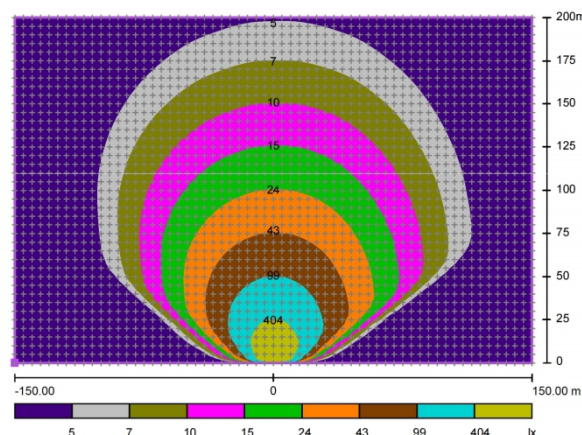
Control System

| | |
|------------------|---------|
| Controller Model | MALC404 |
|------------------|---------|

Dimension and Weight

| | |
|-------------------------------------|----------------------|
| Max Overall Dimension(L×W×H) | 2684 x 2374 x 9530mm |
| Container loading Dimension (L×W×H) | 1970x1378x2490mm |
| Tank Capacity / Running Hr. | 100L / 56hrs. |
| Weight | 1200kg |
| The loading capacity(40'HC) | 8 sets |

Note: Specifications and illustrations are subject to revision without notice.



Environmental Conditions

- Ambient temperature: +5℃~40℃
- Altitude: ≤1000m

Note: Please contact us if operating environmental conditions required do not go with the guidance.

Factory Inspection

- Complete design and quality inspection
- 30 mins full load test
- Function testing
- Protection testing

Painting Process

- MPMC has the most advanced automatic spraying / powder coating production line, and is equipped with various sandblasting equipment to ensure higher quality.
- Canopy painting: Henkel pretreatment process and world famous brand AkzoNobel powder.
- Base Frame painting: Sandblasting process and AkzoNobel powder(Hempel paint is optional).



ISO9001:2005
System certified



ISO9001:2005
System certified



ISO9001:2005
System certified



ISO9001:2005
System certified

Engine Specifications

| | |
|-----------------------------|----------------------------|
| Engine Model | Z482-ET03 |
| Manufacturer | Kubota |
| Emission | Tier 3 |
| Number of Cylinders | 2 |
| Cycle | 4 Stroke |
| Aspiration | Naturally |
| Prime Power / Speed (Gross) | 6.9kW / 3000rpm |
| Lube-oil Capability | 2.5L |
| Fuel consumption | 1.78L/h (@100% Brightness) |
| Starter motor/ Alternator | 12V 0.8kW |

- Heavy duty diesel engine
- Anti-vibration mount
- Replaceable fuel filter, oil filter & air filter
- Cooling radiator and fan
- Starter battery (with lead acid) including rack and cables
- Flexible fuel connection hoses
- Exhaust silencer and bellows
- Operation manuals and circuit diagram document

Alternator Specifications

| | |
|--------------------|-----------|
| Alternator Model | KT06-2 |
| Manufacturer | DGOL |
| Rated Output Power | 6kVA |
| Alternator Type | Brushless |
| Rated Voltage | AC 230V |
| Rated Speed | 3000 RPM |
| IP Protection | IP21 |
| Insulation Grade | H |

OPTIONS

| | |
|--|--|
| <input type="checkbox"/> Jacket water heater | <input type="checkbox"/> Manual pump |
| <input type="checkbox"/> Lub-oil heater | <input type="checkbox"/> Smartgen controller |
| <input type="checkbox"/> ABB/Schneider MCB | <input type="checkbox"/> Sockets |
| <input type="checkbox"/> Battery charger | <input type="checkbox"/> Larger fuel tank |



MPMC POWERTECH CORP.

sales@mpmc-china.com | www.mpmc-china.com

Photographs are for illustrative purposes only and may not reflect final configuration.

Follow us

 <https://www.facebook.com/mpmcgroup>

 <https://www.linkedin.com/company/mpmcpowertech/>

 <https://www.youtube.com/user/MPMCGenerator>

All information in this document is substantially correct at time of printing and may be altered subsequently. Final weight and dimensions will depend on completed specification.