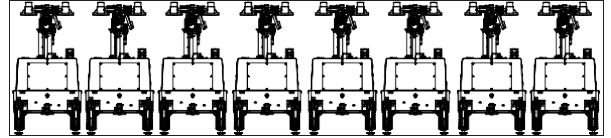


## MLT4KD-1400LS-2

Powered by Kubota

8U. / 40 'HC. CONTAINER








Efficient hydraulic lifting system with rapid telescopic deployment



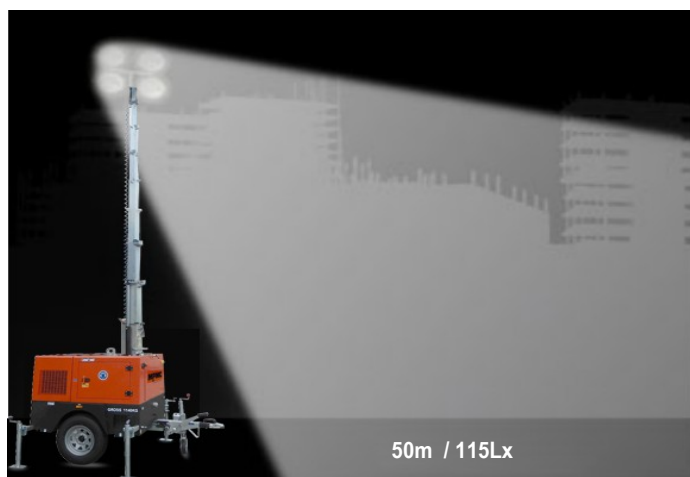
Mast rotation  
355°

Safe lifting

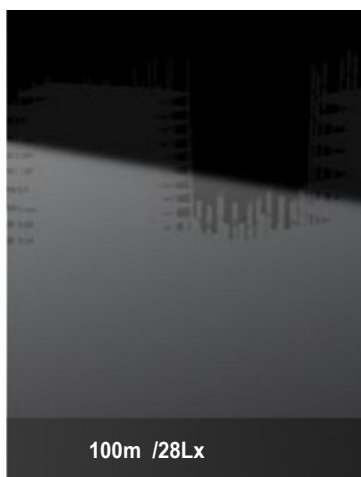
### ✓ Highlights

-  Less fuel consumption. Longer run-time
-  Simple control system
-  High efficiency
-  Sturdy and durable
-  Max height 9.5m





50m / 115Lx



100m / 28Lx



150m / 12Lx

## Lighting Tower Technical Data

|                               |                     |
|-------------------------------|---------------------|
| Power Package Rated Power     | 3.5kW               |
| Number & Power of Lamp        | 4×350W              |
| Rated Frequency / Speed       | 60Hz / 1800 rpm     |
| Rated Voltage                 | AC 240V             |
| Noise                         | 65dB(A) @7M         |
| Mast-Maximum Height           | 9.5m                |
| Mast Lifting & Extension      | Hydraulic Operation |
| Fuel level gauge              | Electronic          |
| Tower leg type                | Manual              |
| AUX. Power output             | 16A/3P Socket       |
| Rotation angle range of light | 355°                |
| Wind resistance grade         | 100km/h             |
| Recommended use environment   | Level ground        |

## Lamp

|                     |              |
|---------------------|--------------|
| Number×Power        | 4×350W       |
| Lamp type           | LED          |
| Protection Glass    | IP67         |
| Luminous Efficiency | 170 lm/W     |
| Color Temperature   | 5700 ± 300 K |
| Voltage             | AC 240V      |
| Lamp Service Life   | 50000hrs     |

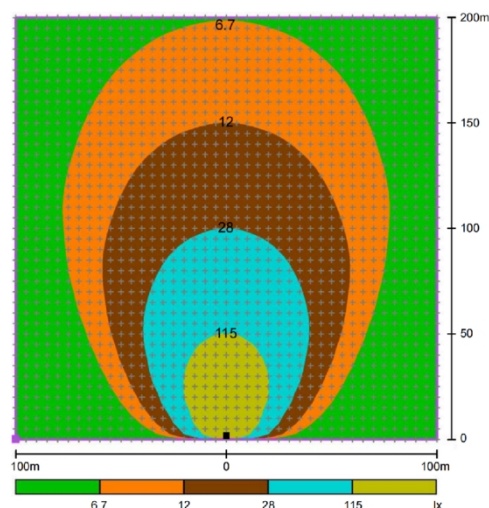
## Control System

|                  |         |
|------------------|---------|
| Controller Model | MALC404 |
|------------------|---------|

## Dimension and Weight

|                                     |                  |
|-------------------------------------|------------------|
| Max Overall Dimension(L×W×H)        | 2278x2364x9500mm |
| Container loading Dimension (L×W×H) | 2278x1564x2463mm |
| Tank Capacity / Running Hr.         | 100L / 180hrs.   |
| Weight                              | 1350kg           |
| The loading capacity(40'HC)         | 8 sets           |

Note: Specifications and illustrations are subject to revision without notice.



## Environmental Conditions

- Ambient temperature: +5℃~40℃
- Altitude: ≤1000m

**Note:** Please contact us if operating environmental conditions required do not go with the guidance.

## Factory Inspection

- Complete design and quality inspection
- 30 mins full load test
- Function testing
- Protection testing

## Painting Process

- MPMC has the most advanced automatic spraying / powder coating production line, and is equipped with various sandblasting equipment to ensure higher quality.
- Canopy painting: Henkel pretreatment process and world famous brand AkzoNobel powder.
- Base Frame painting: Sandblasting process and AkzoNobel powder(Hempel paint is optional).



LABORATORY ACCREDITATION CERTIFICATE

Certificate of the World Manufacturer Identifier Code

## Engine Specifications

|                             |                             |
|-----------------------------|-----------------------------|
| Engine Model                | Z482-B-CHN-1                |
| Manufacturer                | Kubota                      |
| Emission                    | /                           |
| Number of Cylinders         | 2                           |
| Cycle                       | 4 Stroke                    |
| Aspiration                  | Naturally                   |
| Prime Power / Speed (Gross) | 4.1 kW / 1800RPM            |
| Lube-oil Capability         | 2.5 L                       |
| Fuel consumption            | 0.57 L/h (@100% Brightness) |
| Starter motor/ Alternator   | 12V 0.95kW                  |

- Heavy duty diesel engine
- Anti-vibration mount
- Replaceable fuel filter, oil filter & air filter
- Cooling radiator and fan
- Starter battery (with lead acid) including rack and cables
- Flexible fuel connection hoses
- Exhaust silencer and bellows
- Operation manuals and circuit diagram document

## Alternator Specifications

|                    |          |
|--------------------|----------|
| Alternator Model   | FCA4.5   |
| Manufacturer       | DGOL     |
| Rated Output Power | 4.5 kVA  |
| Alternator Type    | PMG      |
| Rated Voltage      | AC 240V  |
| Rated Speed        | 1800 rpm |
| IP Protection      | IP21     |
| Insulation Grade   | H        |

## OPTIONS

|  |  |
|--|--|
| <input type="checkbox"/> Jacket water heater | <input type="checkbox"/> Manual pump         |
| <input type="checkbox"/> Lub-oil heater      | <input type="checkbox"/> Smartgen controller |
| <input type="checkbox"/> ABB/Schneider MCB   | <input type="checkbox"/> Sockets             |
| <input type="checkbox"/> Battery charger     | <input type="checkbox"/> Larger fuel tank    |



**MPMC POWERTECH CORP.**

sales@mpmc-china.com | www.mpmc-china.com

Photographs are for illustrative purposes only and may

Follow us

 <https://www.facebook.com/mpmcgroup>

 <https://www.linkedin.com/company/mpmcpowertech/>  
not reflect final configuration.

# MPMC BEYOND ENERGY



<https://www.youtube.com/user/MPMCGenerator>

All information in this document is substantially correct at time of printing and may be altered subsequently. Final weight and dimensions will depend on completed specification.