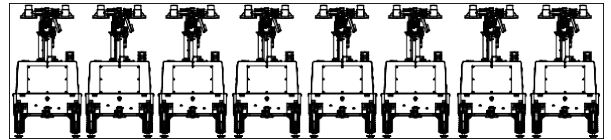


MLT4KD-1400LHS-1

Powered by Kubota

8unit / 40 'HC. CONTAINER








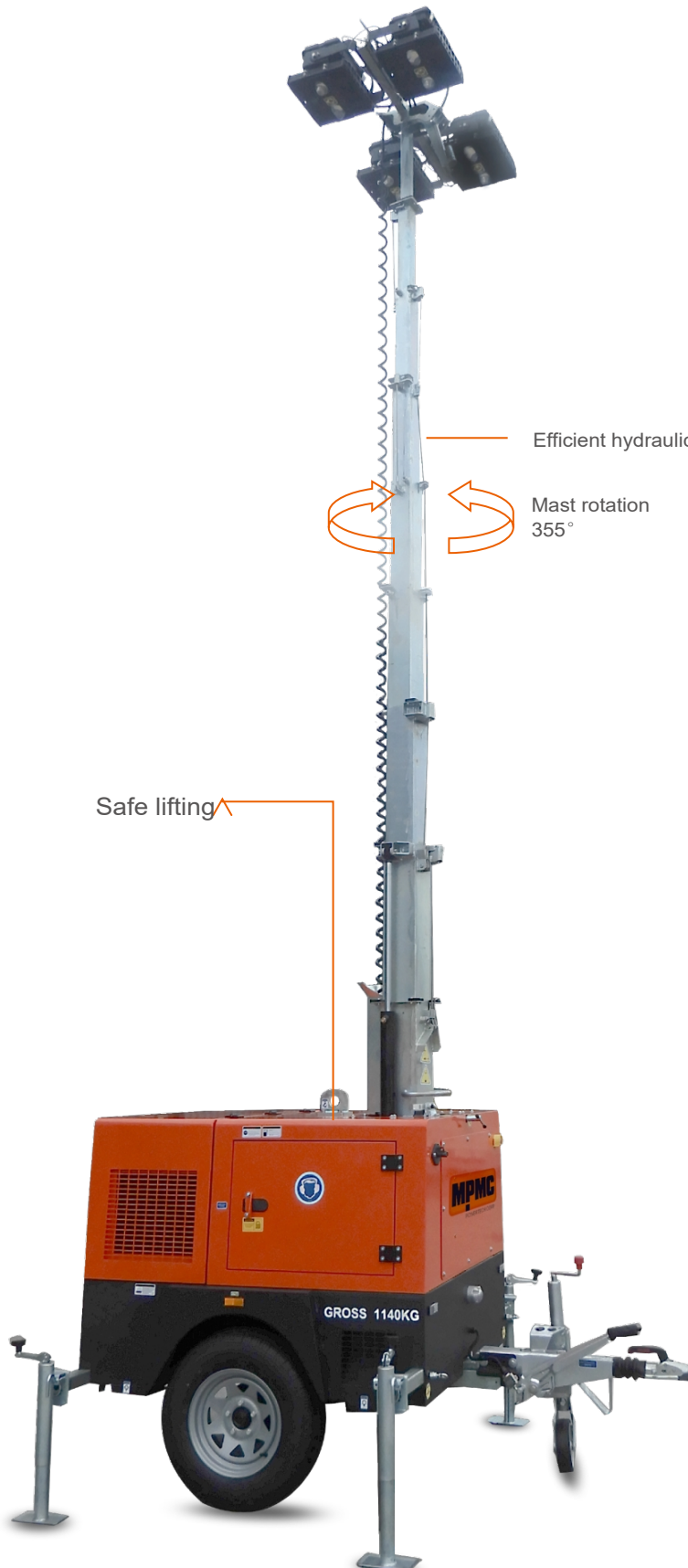
Efficient hydraulic lifting system with rapid telescopic deployment

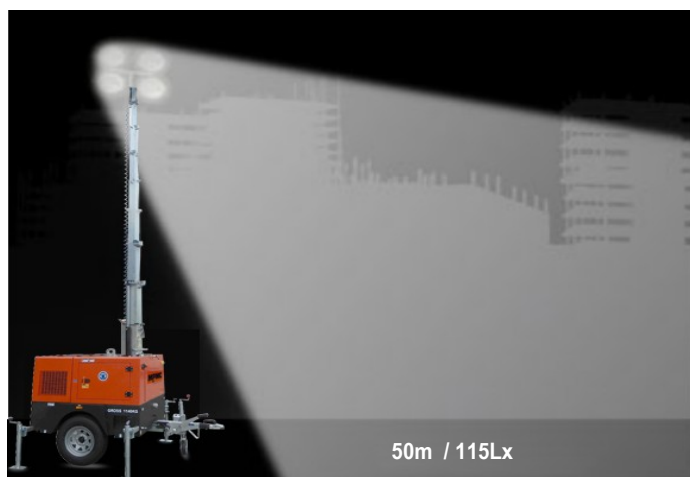
Mast rotation
355°

Safe lifting

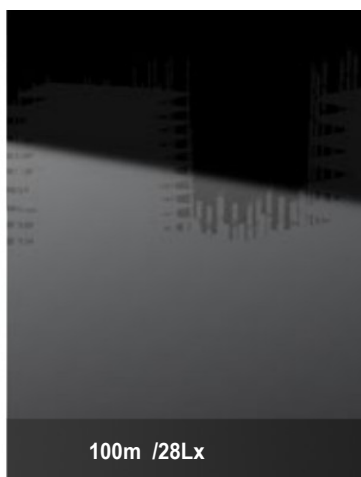
✓ Highlights

-  Less fuel consumption. Longer run-time
-  Simple control system
-  High efficiency
-  Sturdy and durable
-  Max height 9.5m





50m / 115Lx



100m / 28Lx



150m / 12Lx

Lighting Tower Technical Data

Power Package Rated Power	2.99kW
Number & Power of Lamp	4×350W
Rated Frequency / Speed	50Hz / 1500 rpm
Rated Voltage	AC 230V
Noise	63dB(A) @7M
Mast-Maximum Height	9.5m
Mast Lifting & Extension	Hydraulic Operation
Tower leg type	Manual
Trailer Load bearing	1200KG
Trailer type	On road type
AUX. Power output	16A/3P Socket
Rotation angle range of light	355°
Wind resistance grade	100km/h
Recommended use environment	Level ground

Lamp

Number×Power	4×350W
Lamp type	LED
Protection Glass	IP67
Luminous Efficiency	170 lm/W
Color Temperature	5700±300 K
Voltage	AC 230V
Lamp Service Life	50000hrs

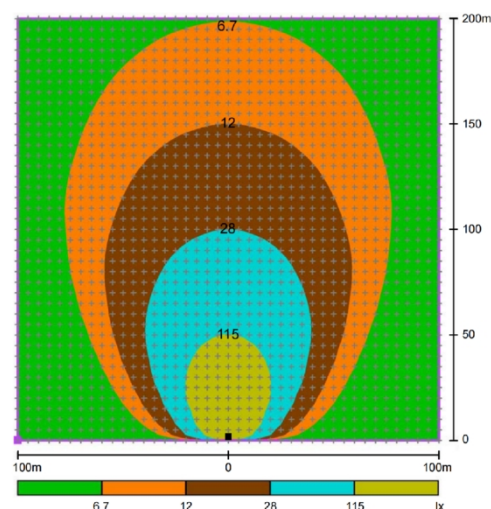
Control System

Controller Model	MALC404
------------------	---------

Dimension and Weight

Max Overall Dimension(L×W×H)	2684x2374x9530mm
Container loading Dimension (L×W×H)	1970x1378x2490mm
Tank Capacity / Running Hr.	100L / 180hrs.
Weight	1200kg
The loading capacity(40'HC)	8 sets

Note: Specifications and illustrations are subject to revision without notice.



Environmental Conditions

- Ambient temperature: +5℃~40℃
- Altitude: ≤1000m

Note: Please contact us if operating environmental conditions required do not go with the guidance.

Factory Inspection

- Complete design and quality inspection
- 30 mins full load test
- Function testing
- Protection testing

Painting Process

- MPMC has the most advanced automatic spraying / powder coating production line, and is equipped with various sandblasting equipment to ensure higher quality.
- Canopy painting: HenKel pretreatment process and world famous brand AkzoNobel powder.
- Base Frame painting: Sandblasting process and AkzoNobel powder(Hempel paint is optional).



ISO9001:2005
System certified



ISO9001:2005
System certified



ISO9001:2005
System certified



ISO9001:2005
System certified

Engine Specifications

Engine Model	Z482-B-CHN-1
Manufacturer	Kubota
Emission	/
Number of Cylinders	2
Cycle	4 Stroke
Aspiration	Naturally
Prime Power / Speed (Gross)	3.4kW / 1500rpm
Lube-oil Capability	2.5 L
Fuel consumption	0.57 L/h (@100% Brightness)
Starter motor/ Alternator	12V 0.95kW

- Heavy duty diesel engine
- Anti-vibration mount
- Replaceable fuel filter, oil filter & air filter
- Cooling radiator and fan
- Starter battery (with lead acid) including rack and cables
- Flexible fuel connection hoses
- Exhaust silencer and bellows
- Operation manuals and circuit diagram document

Alternator Specifications

Alternator Model	FCA4
Manufacturer	DGOL
Rated Output Power	4kVA
Alternator Type	PMG
Rated Voltage	AC 230V
Rated Speed	1500 rpm
IP Protection	IP21
Insulation Grade	H

OPTIONS

<input type="checkbox"/> Jacket water heater	<input type="checkbox"/> Manual pump
<input type="checkbox"/> Lub-oil heater	<input type="checkbox"/> Smartgen controller
<input type="checkbox"/> ABB/Schneider MCB	<input type="checkbox"/> Sockets
<input type="checkbox"/> Battery charger	<input type="checkbox"/> Larger fuel tank



MPMC POWERTECH CORP.

sales@mpmc-china.com | www.mpmc-china.com

Photographs are for illustrative purposes only and may not reflect final configuration.

Follow us

 <https://www.facebook.com/mpmcgroup>

 <https://www.linkedin.com/company/mpmcpowertech/>

 <https://www.youtube.com/user/MPMCGenerator>

All information in this document is substantially correct at time of printing and may be altered subsequently. Final weight and dimensions will depend on completed specification.