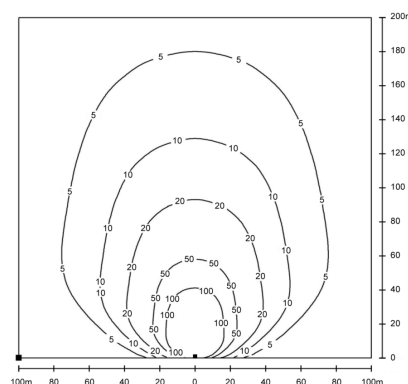
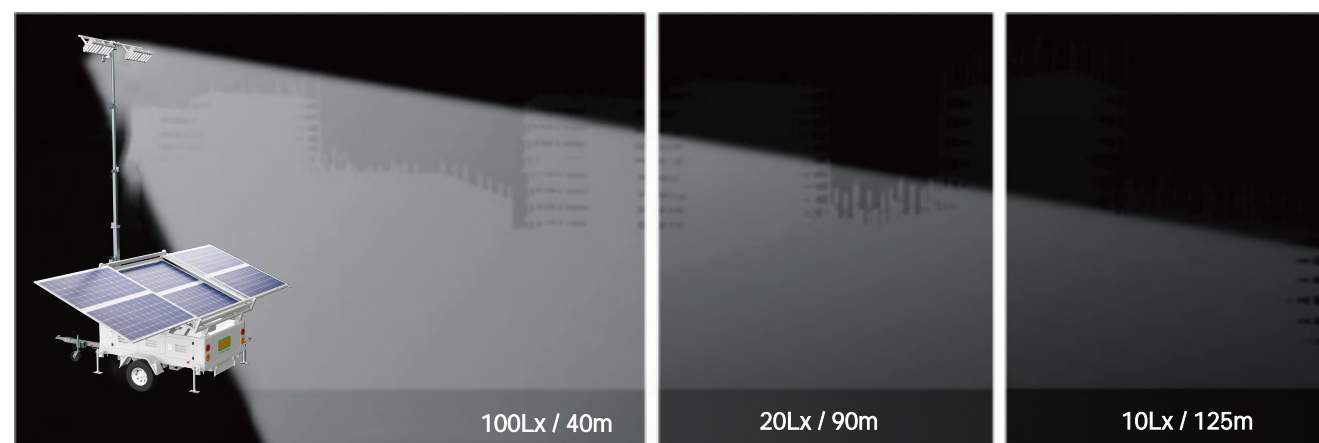


The solar light towers take the advantages of solar renewable energy and LED light systems on the road. Ideal for special events, construction sites, security and any other application where on-demand lighting is desired. This system provides cost-effective bright white LED lighting without all of the disadvantages inherent to diesel lighting systems – high operating costs (diesel fuel, maintenance, labor) as well as carbon emissions, noise, fumes and light pollution.



✔ Product characteristics

- Higher power efficiency
- Longer running hours
- Larger area coverage
- Sturdy and durable
- Max height 9m



www.mpmchybrid.com

Specification

Lamp	
Type	LED
Rated power	200 W
Quantity	4
Luminous efficiency	210 Lm/W
Luminous Flux of Lamp Array	168000 Lm
Total Irradiation Area	21000 m²
(Min≥ 5lux,7.2m Height)	
Solar panel	
Pmax	480 W
Quantity	8 pcs.
Peak Solar Charge Speed	3.8kw/h
Battery	
Battery model	MF51100
Battery capacity	5.12 kWh
Quantity	6
Maximum quantity	6
Trailer	
Type	Off-road
Axle type	Single axle
Braking mode	Parking hand break + Overrun device
Maximal Moving Speed	25 km/h
Lifting type	Vertical
Lighting tower	
Lifting system	Hydraulic
Vertical Rotation Angle	22~90 deg.
Lifting type	Vertical
Extended height	9m
Loading Dimensions(L*W*H)	2932*2150*2440mm
Expanding Dimensions(L*W*H)	6800*5910*9000mm
Net Weight	2100kg
Loading Units	4 sets/ 40HQ

Option

- ☐ 7.2m & Electric
- ☐ 7.2m & Manual
- ☐ 7.2m & Hydraulic
- ☐ Automatic control system
- ☐ WIFI
- ☐ Video camera
- ☐ On-road trailer



MPMC POWERTECH CORP.
sales@mpmc-china.com | www.mpmc-china.com

Photographs are for illustrative purposes only and may not reflect final configuration.

Follow us

 <https://www.facebook.com/mpmcgroup>

 <https://www.linkedin.com/company/mpmcpowertech/>

 <https://www.youtube.com/user/MPMCGenerator>

All information in this document is substantially correct at time of printing and may be altered subsequently. Final weight and dimensions will depend on completed specification.