

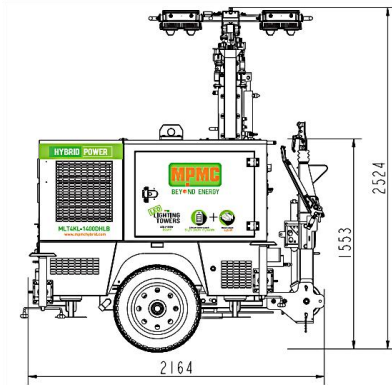
MLT4KL-600DHBL

HYBRID POWER LIGHTING TOWER

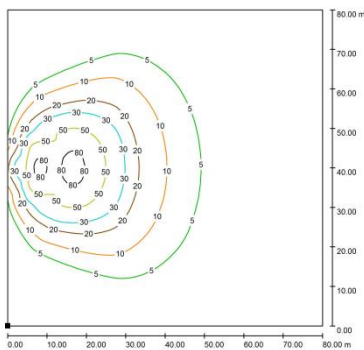


Lithium battery pack
51.2V 300Ah 15.36kWh

Rated output
3.0kW



4 x 150W 9m Isolux curve

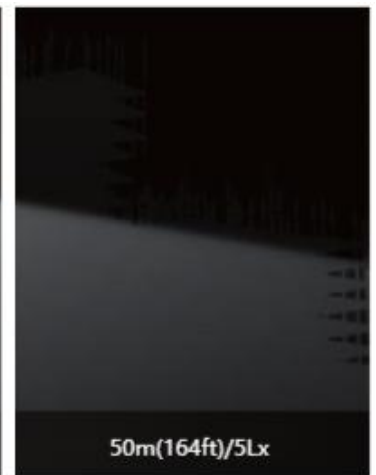
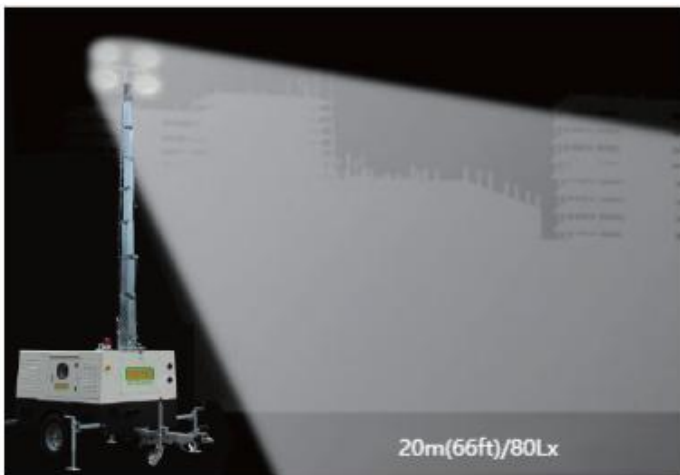


Products performance and advantages

- Environment friendly and resource saving
- Strong structure and easy operation;
- More than 15 hours lighting time by storage energy;
- Silent lighting at work by LFP batteries;
- BMS for LFP batteries protection;
- Auto control lights at day and nights

Products characteristics

- Less fuel consumption, long run time
- Auto control system
- High efficiency
- Sturdy and durable
- Max height 9m



General

Rated Voltage	DC48 V
Rated Genset Power	3.0 kW
Environmental Temperature	-10 °C ~ 50 °C
Trailer Attachment	Ball
Max Towing Speed	80 km/h
Wind Speed Rating	100 km/h
Tire Rim Size	14"

Dimensions & Weight

Dimensions (Towing)	3348 x 1756 x 2524 mm (L x W x H)
Dimensions (Deployed)	3348 x 2456 x 9000 mm (L x W x H)
Dimensions (Stowed)	2164 x 1756 x 2524 mm (L x W x H)
Container Load Capacity	8 units / 40HC
Weight	1500 kg

Engine & Alternator

Engine Model	Kubota Z482-B-CHN-1/Z482-D2-EF07e
Emission	Tier 4
Alternator Model	MD3.0-48
Rated Speed	1500/1800 rpm

Battery Energy Storage System

Type	LFP (LiFePO ₄)
Rated capacity	15.36 kWh
Control system	BMS
Cycle Life	3000
Discharge of Depth	90%
Battery Discharging Time	15 h
Battery Charging Time	6 h

Fuel Tank

Capacity	100 L
Total Running Time	100 h

Lighting & Mast

Light type	LED 4 x 150 W
Lumens	90000
Mast Raise Operation	Hydraulic
Mast Rotation	349° Manual Operation
Light Tilt	Electrical

Cloud (Option)

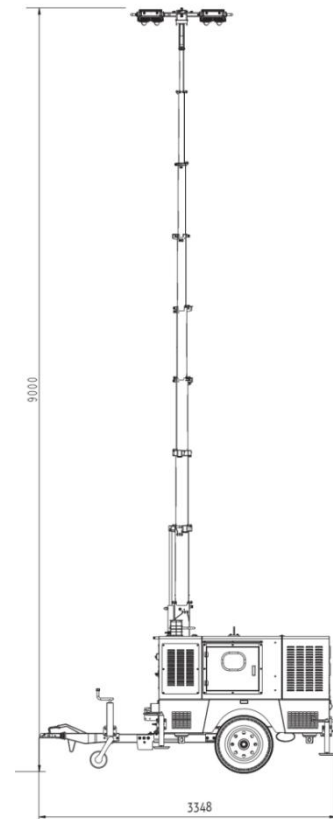
Type	GPS/GPRS/4G
------	-------------

Standard Configuration

- Bundled base & standard canopy
- 1800kg trailer with overrun and parking brake
- Standard lifting lug
- Hydraulic power pack
- Smart control system
- Heavy-duty stabilizer legs
- Emergency stop button

Options

- Cloud system
- Preheater
- Ring tow point



Follow us

- <https://www.facebook.com/mpmcgroup>
- <https://www.linkedin.com/company/mpmcpowertech/>
- <https://www.youtube.com/user/MPMCGenerator>

All information in this document is substantially correct at time of printing and may be altered subsequently. Final weight and dimensions will depend on completed specification.



MPMC POWERTECH CORP.
sales@mpmc-china.com | www.mpmc-china.com

Photographs are for illustrative purposes only and may not reflect final specification.