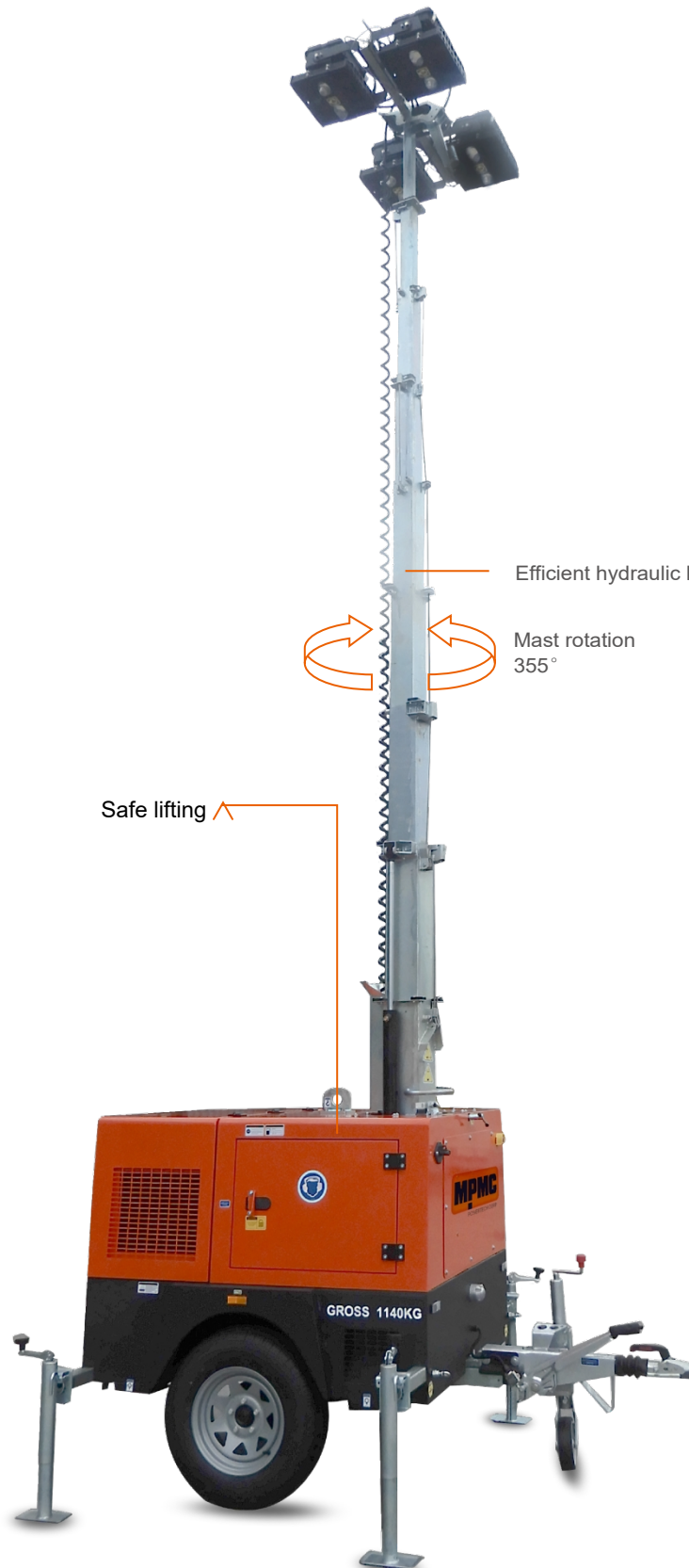
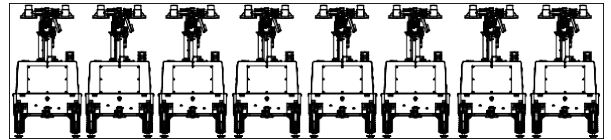


## MLT4KME-1400LHS-1

Powered by Kubota

8unit / 40 'HC. CONTAINER



Efficient hydraulic lifting system with rapid telescopic deployment

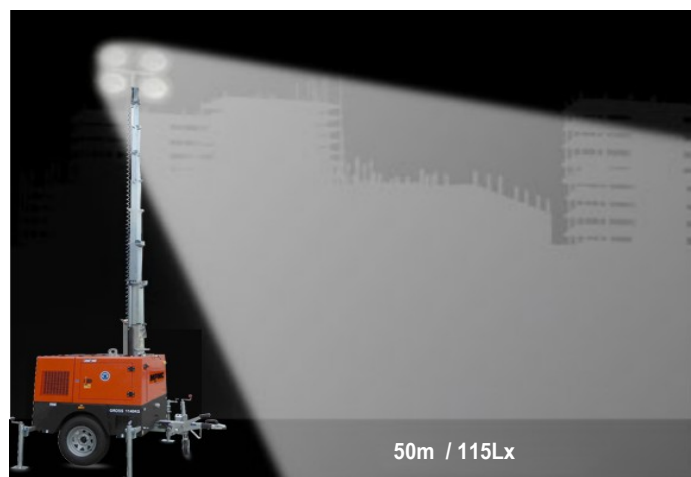
Mast rotation  
355°

Safe lifting

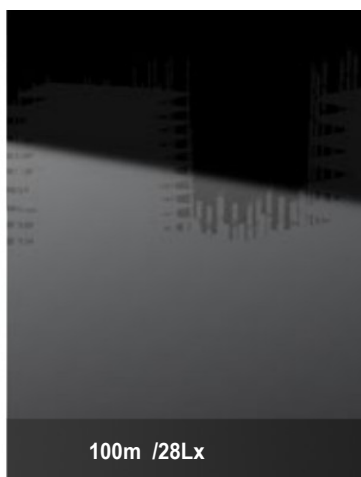
### ✓ Highlights

- Less fuel consumption. Longer run-time
- Simple control system
- High efficiency
- Sturdy and durable
- Max height 9.5m





50m / 115Lx



100m / 28Lx



150m / 12Lx

## Lighting Tower Technical Data

Power Package Rated Power	2.5kW
Number & Power of Lamp	4×350W
Rated Frequency / Speed	50Hz / 1500 rpm
Rated Voltage	AC 230V
Noise	65dB(A) @7M
Mast-Maximum Height	9.5m
Mast Lifting & Extension	Hydraulic Operation
Tower leg type	Manual
Trailer Load bearing	1200KG
Trailer type	On road type
AUX. Power output	16A/3P Socket
Rotation angle range of light	355°
Wind resistance grade	100km/h
Recommended use environment	Level ground

## Lamp

Number×Power	4×350W
Lamp type	LED
Protection Glass	IP67
Luminous Efficiency	170Lm/W
Color Temperature	5700±300 K
Voltage	AC 230V
Lamp Service Life	50000hrs

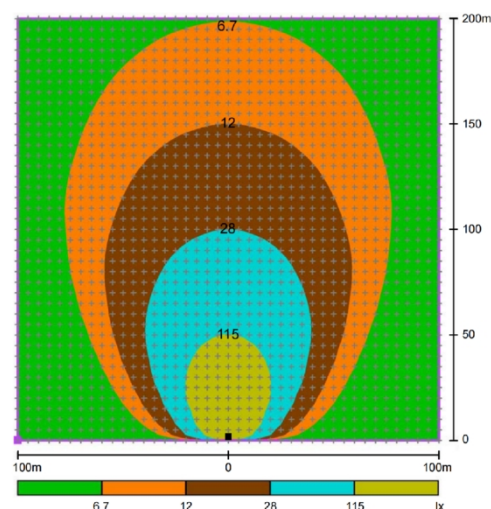
## Control System

Controller Model	MALC404
------------------	---------

## Dimension and Weight

Max Overall Dimension(L×W×H)	2684x2374x9530mm
Container loading Dimension (L×W×H)	1970x1378x2490mm
Tank Capacity / Running Hr.	100L / 175hrs.
Weight	1200kg
The loading capacity(40'HC)	8 sets

Note: Specifications and illustrations are subject to revision without notice.



## Environmental Conditions

- Ambient temperature: +5℃~40℃
- Altitude: ≤1000m

**Note:** Please contact us if operating environmental conditions required do not go with the guidance.

## Factory Inspection

- Complete design and quality inspection
- 30 mins full load test
- Function testing
- Protection testing

## Painting Process

- MPMC has the most advanced automatic spraying / powder coating production line, and is equipped with various sandblasting equipment to ensure higher quality.
- Canopy painting: HenKel pretreatment process and world famous brand AkzoNobel powder.
- Base Frame painting: Sandblasting process and AkzoNobel powder(Hempel paint is optional).



ISO9001:2005  
System certified



ISO9001:2005  
System certified



ISO9001:2005  
System certified



ISO9001:2005  
System certified

## Engine Specifications

Engine Model	Z482-B-CHN-1
Manufacturer	Kubota
Emission	NA
Number of Cylinders	2
Cycle	4 Stroke
Aspiration	Naturally
Prime Power / Speed (Gross)	3.4 kW / 1500RPM
Lube-oil Capability	2.5L
Fuel consumption	0.57 L/h (@100% Brightness)
Starter motor/ Alternator	12V 0.95kW

- Heavy duty diesel engine
- Anti-vibration mount
- Replaceable fuel filter, oil filter & air filter
- Cooling radiator and fan
- Starter battery (with lead acid) including rack and cables
- Flexible fuel connection hoses
- Exhaust silencer and bellows
- Operation manuals and circuit diagram document

## Alternator Specifications

Alternator Model	LT3N-75/4
Manufacturer	MECC
Rated Output Power	3.5kVA
Alternator Type	Brushless
Rated Voltage	AC 230V
Rated Speed	1500 rpm
IP Protection	IP23
Insulation Grade	H

## OPTIONS

<input type="checkbox"/> Jacket water heater	<input type="checkbox"/> Manual pump
<input type="checkbox"/> Lub-oil heater	<input type="checkbox"/> Smartgen controller
<input type="checkbox"/> ABB/Schneider MCB	<input type="checkbox"/> Sockets
<input type="checkbox"/> Battery charger	<input type="checkbox"/> Larger fuel tank






### MPMC POWERTECH CORP.

sales@mpmc-china.com | www.mpmc-china.com

Photographs are for illustrative purposes only and may not reflect final configuration.

Follow us

-  <https://www.facebook.com/mpmcgroup>  
 <https://www.linkedin.com/company/mpmcpowertech/>  
 <https://www.youtube.com/user/MPMCGenerator>

All information in this document is substantially correct at time of printing and may be altered subsequently. Final weight and dimensions will depend on completed specification.